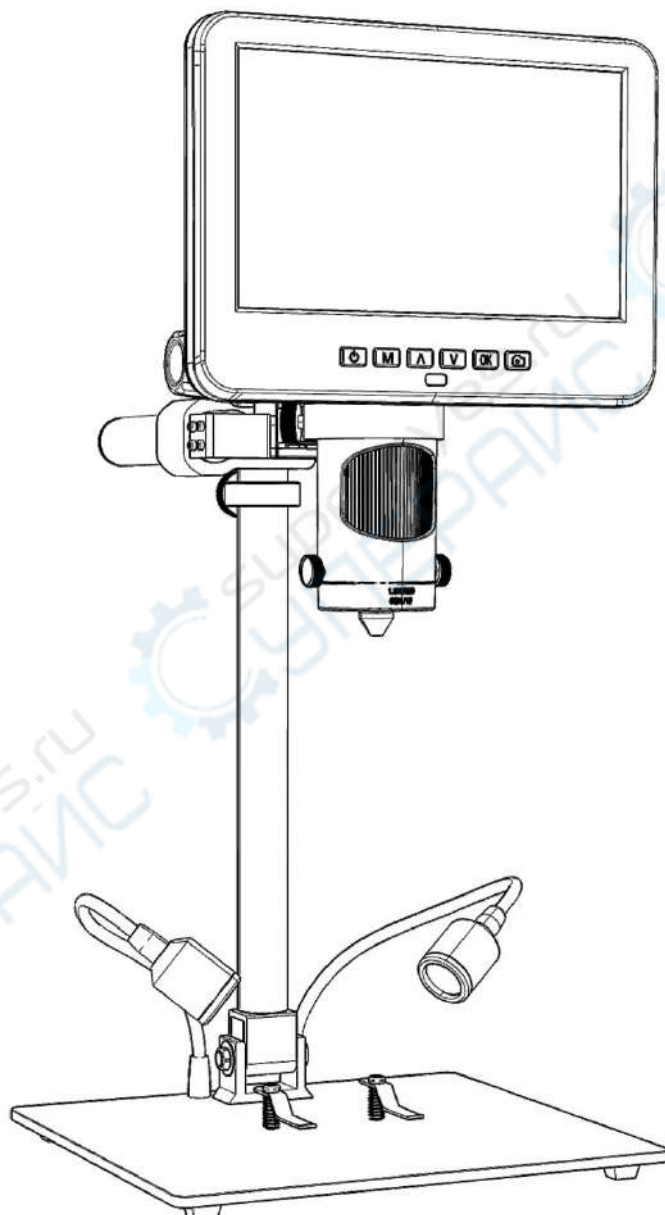


Digital Microscope 246S 249S

Users Manual (metal stand)



supereyes.ru
СУПЕРПАЙС

CONTENTS

Safety and maintenance	2
Specifications	2
Package include	3
Video demonstration	3
Button&Connection	4
Bracket installation	5
Bracket instructions	5
Quick Start	6
How to choose lens	7
Digital zoom	10
Save files to micro SD card	10
Remote	11
Settings	12
Output to external devices	14
◆ HDMI output	14
◆ USB Output	14
Warranty	20

Safety and maintenance

1. Please read this users manual carefully before using the device. It may cause permanent damage to the device to not follow the operation guide listed in this manual.
2. This product contains tiny parts and components that are NOT edible. Please let children and teens use this device under proper guide and supervise by adults. Disables, patients and people with allergy should not use this product.
3. We do not recommend using this product outdoor. It is not waterproof, and can not be placed in extreme environment: heat, high pressure etc.. Please keep and use it in safe, clean and dry environment. Stay it away from oil, gas, water and corrosive potions. Storage method refers to other electronic products, such as a computer.
4. Clean the lens when image goes blurry: cut the power supply firstly, wipe the lens with a soft clean cloth moistened with alcohol, make sure the whole device is dry before power it on again. Users should follow these steps for daily cleaning as well, remember to ONLY wipe the INSULATED part of the monitor.
5. The screen of the monitor is very fragile, please use it with care. Do not drop, hard press or leave it with sharp object. Hold the frame of the monitor to adjust its orientation. The monitor is not waterproof, please clean it with soft and dry material.
6. Please be aware that this microscope is not for medical use.

Specifications

Video resolution	UHD 2880x2160 24fps; FHD 1920x1080 60fps/30fps ; HD 1280x720 120fps
Video Format	MP4
Frame rate	Max 120fps (600 Lus illumination &HDP120)
Magnification ratio	Lens A: 18-720x; Lens D: 1800-2040x; Lens L: 60-240x (with3 times digital zoom, output to 28inch HDMI monitor)
Working Distance	Lens A: 12mm-320mm; Lens D: 4mm- 5mm; Lens L: 90mm-300mm
Photo resolution	Max 5600*4200 (24M 5600*4200)
Photo Format	JPG
Storage	Micro-SD card, up to 32G (not included)
Video-output	HDMI
PC Support	Windows XP/7/8/10, PC software with measurement (gift)
Power supply	5V 2A and above
Stand size	20cm*18cm*33cm
Package include	Microscope, Metal stand, 3 Lenses(A,D&L), Slide holder, Remote, Dimmer cable, HDMI cable, USB cable, Slides kit, Tweezers, Bug box

Package include

- ① Microscope
- ② Metal bracket
- ③ Lens A (has been fixed)
- ④ Lens D
- ⑤ Lens L
- ⑥ Remote
- ⑦ Dimmer cable
- ⑧ HDMI cable
- ⑨ USB cable
- ⑩ Slide holder
- ⑪ Slides kit
- ⑫ Tweezers
- ⑬ Bug box



(P1 Package include)

Video demonstration:

Please find the video demo from the link (Please type all letters properly capitalized)/QR code below,

① Product installation:

<https://bit.ly/3rg8lTV>

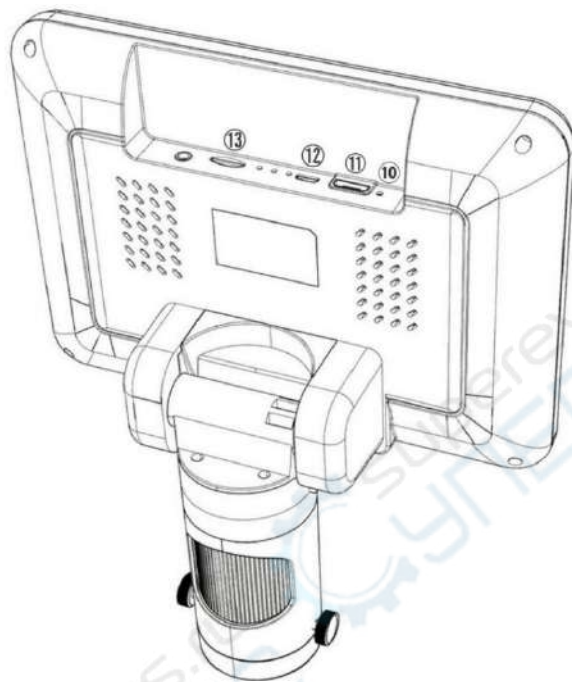
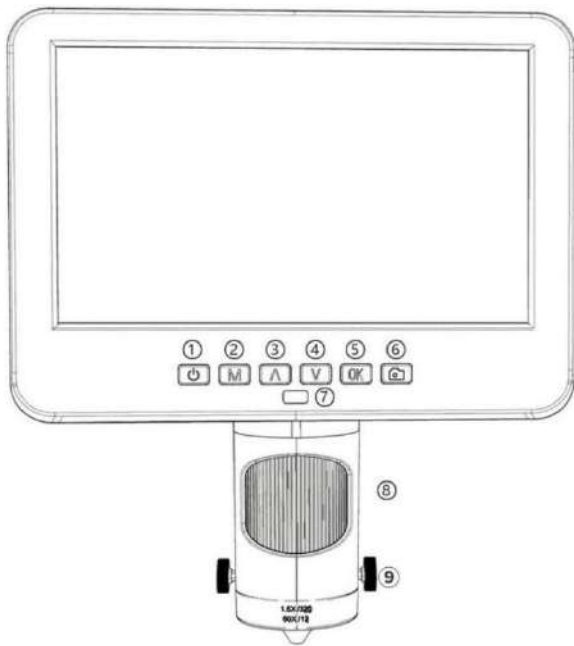


② How to choose different lens:

<https://bit.ly/3J2r0bN>



Button&Connection



(P2 Buttons&Connection)

①Power on/off

②Mode/Menu

③Up/Digital zoom in

④Down/Digital zoom out

⑤OK/Start recording

⑥Take pictures

(while the device is recording)

⑦Remote signal receiver

(where you aim remote to)

⑧Focusing tube

⑨Lens fixing screws

⑩Reset

⑪HDMI port

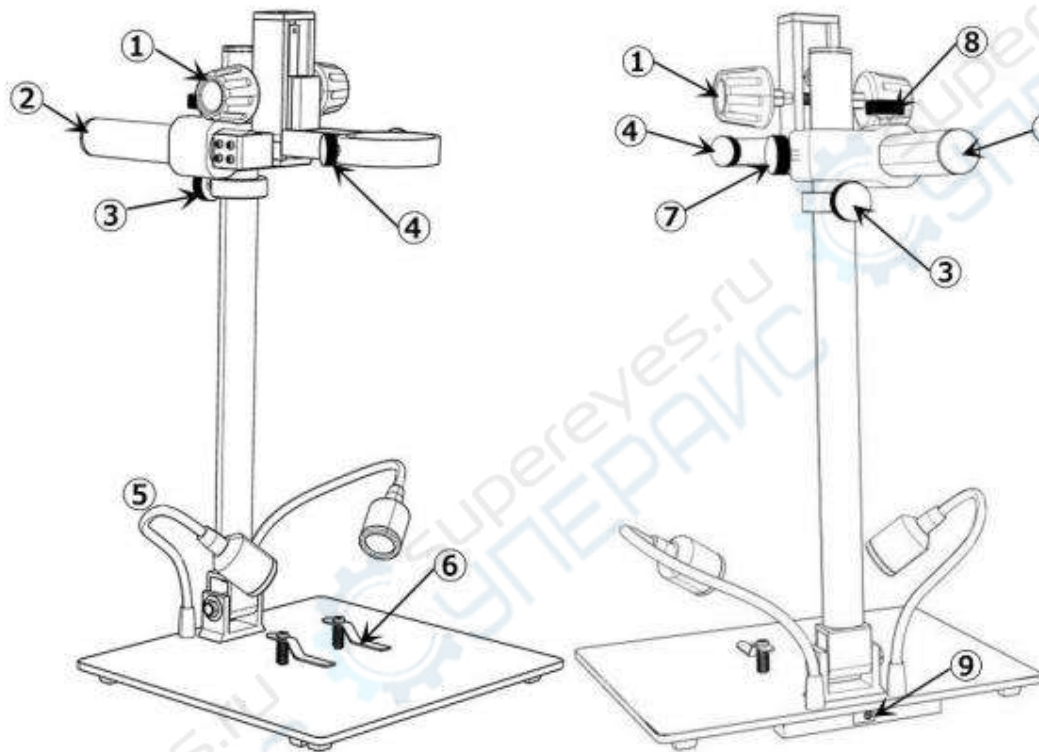
⑫USB port

⑬SD card slot

Bracket installation

Please see the attached installation diagram.

Bracket instructions



(P3 Bracket instructions)

- ① Secondary Bracket Lift
- ② Boom Arm
- ③ Lower Limit Stop
- ④ Monitor Fixing Screws
- ⑤ Spot Lights
- ⑥ Clips

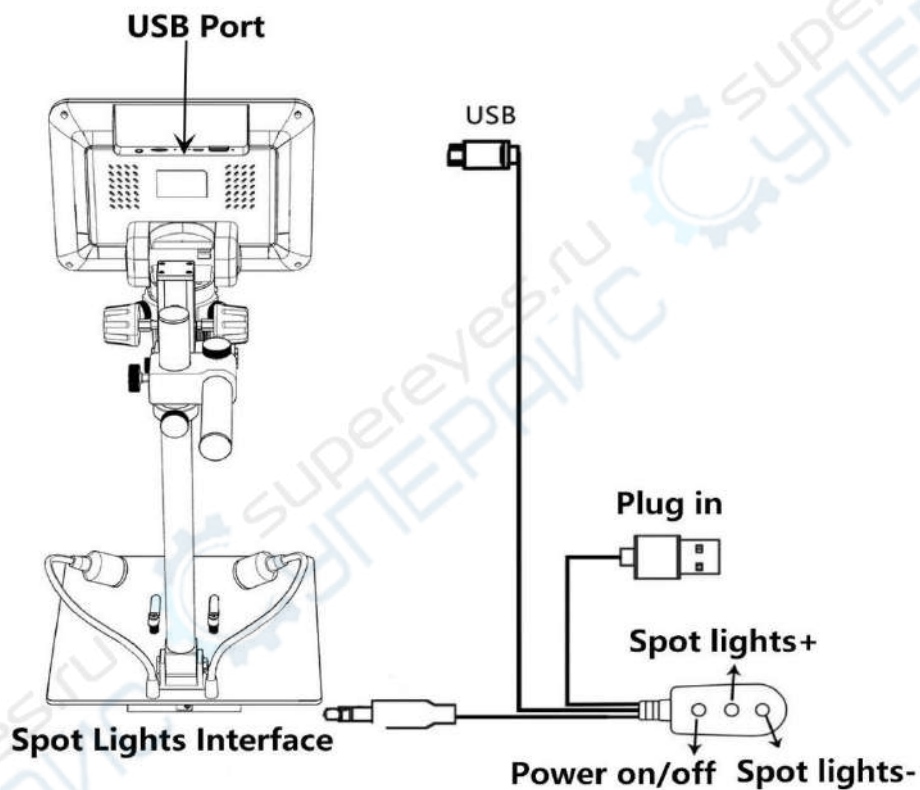
- ⑦ Boom Arm V-locker
(lock the arm in vertical direction)
- ⑧ Boom Arm H-locker
(lock the arm in horizontal direction)
- ⑨ Spot Lights Socket

Quick Start

1. Connect the device to power supply (5V 2A& above) as followed pic 4 to power on the microscope.
2. Press and hold the Power button (pic 2 #①) until the monitor lights up. (device may switch on automatically when you power it on, and its totally normal)

*Trouble shooting

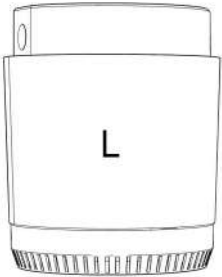
When the monitor image stops or freezes, please pin the Reset hole (pic 2 #⑩) to reset the device first, then power on the device again. (Reset hole is very tiny, located at the back of the monitor. You may need to use the help of other tools with this process. All settings of the microscope will be back to factory setting after this, but it won' t delete any files saved in memory card).



(Pic 4 Connection)

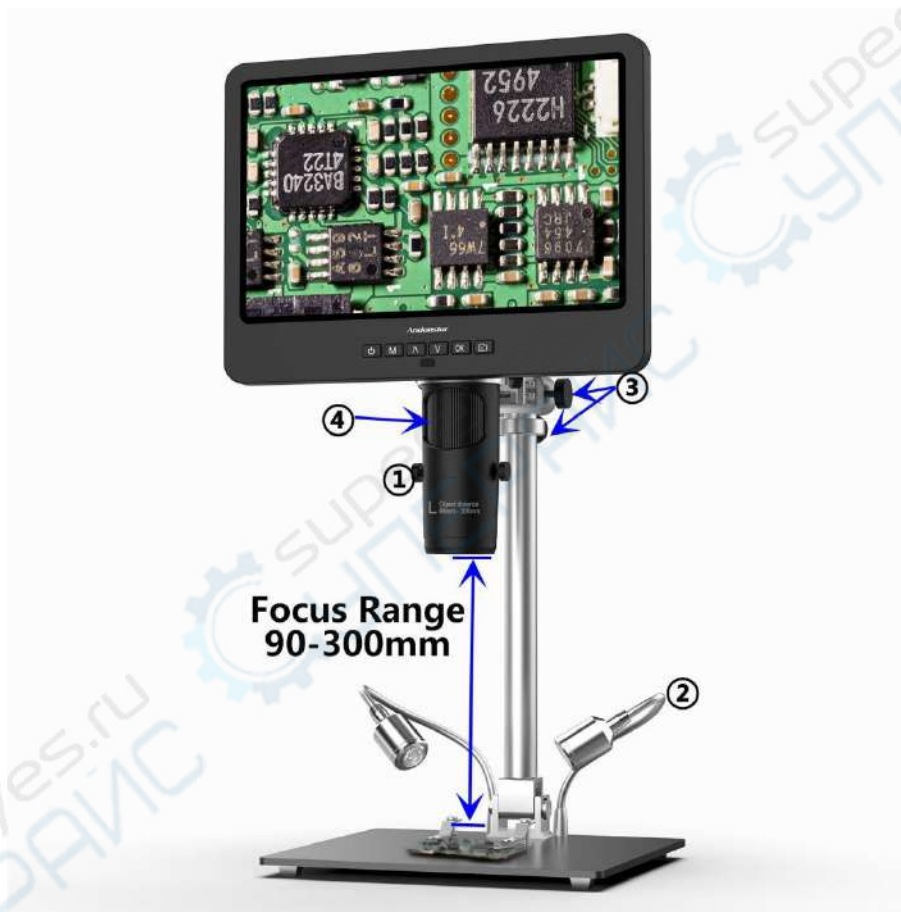
How to choose lens

Lens L:



Working distance: 90mm-300mm, **Magnification:** 60-240x (with 3 times digital zoom, output to 28inch HDMI monitor)

Applications: circuit board observe, watch repair etc.

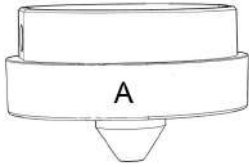


(Pic 5 Go with lens L)

Steps: In pic 5 it marked out which parts of the microscope are involved to each step.

- ① Install and fix lens L to the bottom of the focusing tube.
- ② Bend the two goose-neck spot lights, make the field of view enough illuminated.
- ③ Loose the Arm V-locker, locate the whole monitor part to a desire height (distance from the lens to the specimen should be around 90mm to 300mm), then fix the V-locker. In order to adjust object distance more precisely, adjust the height of the secondary bracket. The shorter the object distance is, the bigger magnification is.
- ④ Turn the focusing tube to get a clear image. Turn it clockwise to zoom in and the other way to zoom out.

Lens A:



Working distance: 12mm-320mm, **Magnification:** 18-720x (with 3 times digital zoom, output to 28inch HDMI monitor)

Applications: observe whole size or part of coins, stones/stamps collect, circuit board observe etc.



(Pic 6 Go with Lens A)

Steps: In pic 6 it marked out which parts of the microscope are involved to each step.

① Install and fix lens A to the bottom of the focusing tube.

② Bend the two goose-neck spot lights, make sure the light shines on the coin.

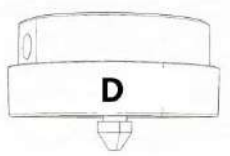
③ Loose the Arm V-locker, locate the whole monitor part to a desire height (distance from the lens to the specimen should be around 12mm to 320mm), then fix the V-locker. In order to adjust object distance more precisely, adjust the height of the secondary bracket. The shorter the object distance is, the bigger magnification is.

④ Turn the focusing tube to get a clear image. Turn it clockwise to zoom in and the other way to zoom out.

*In order to observe part of the coin, please lower the arm height to shorten the object distance, then turn the focusing tube, get a clear image.

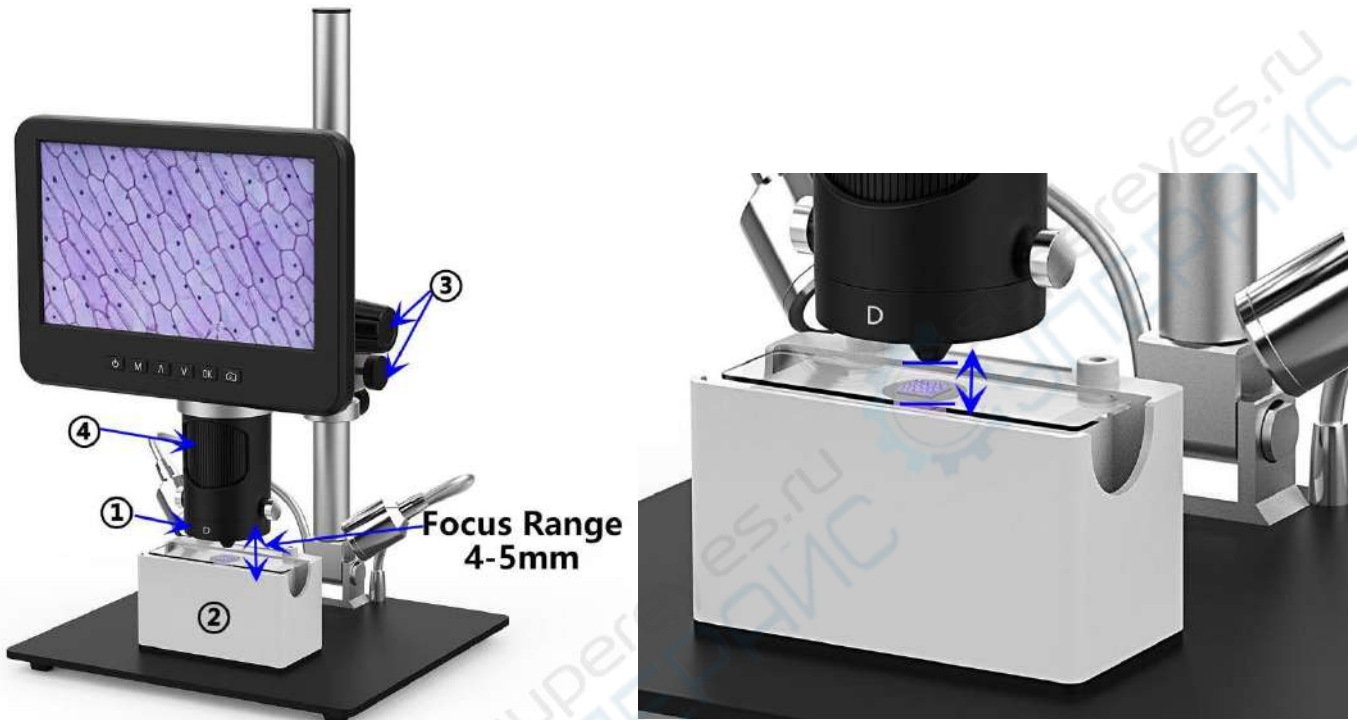
*Steps above can also be applied to observe plants, stones etc.

Lens D:



Working distance: 4mm-5mm, **Magnification:** 1800-2040x (with 3 times digital zoom, output to 28 inch HDMI monitor)

Applications: Microscope slides etc.



(Pic 7 Go with lens D)

Steps: In pic 7 it marked out which parts of the microscope are involved to each step.

- ① Install and fix lens D to the bottom of the focusing tube.
- ② Place a slide on the slides holder and power on the slides holder. (goose-neck spot lights can not provide proper illumination in this case, so leave them and use the same cable interface to power on slides holder)
- ③ Loose the Arm V-locker, locate the whole monitor part to a desire height (distance from the lens to the specimen should be around 4mm to 5mm), then fix the V-locker. Since the focus range is very short in this case, we recommend users to adjust the height of the secondary bracket instead, which is more precisely. The shorter the object distance is, the bigger magnification is.
- ④ Turn the focusing tube to get a clear image. Turn it clockwise to zoom in and the other way to zoom out.

***Lens D' s magnification is quite big, which requires a short object distance. Meanwhile, any tiny movement or shake of specimen would be displayed as huge on the monitor, which requires user to operate very carefully and patiently.**

Digital zoom

Press “up” button on the monitor (pic 2 #③) to apply digital zoom in, and “down” to zoom out (pic 2#④)

Save files to micro SD card

To save images and videos to a memory card, please insert a card into the TF slot at the back of the monitor before power on the device.

Attention:

1. TD card are not included in the standard package. Please purchase it from quality suppliers. We recommend 10 grade high speed TF card.
2. Metal strip side of the card faces outward.
3. Push the card deeply into the card slot until you hear a click sound. Otherwise it would bounce back.
- 4. When the monitor shows “card error” or “card is full” , please format the card first before take pics. Format steps are: Press and hold button M until it shows a menu→press M button again to get into Setting menu→Press up or down button to select→choose” Format” and confirm**
5. Do not insert a card while microscope is working. If you do, the microscope would switch off automatically. And you will have to turn it on again.

In order to take videos, pictures, or playback files we have taken, we need to get into different modes firstly. MODE button (pic 4 #②, marked as “M”) can be used to selected among three modes, video(📹), photo(📷) and playback(📺).

Record videos

In video mode(📹) and photo mode(📷) press “OK” button to start recording. Press it again to stop. It works the same way with the “OK” button on the remote.

In video mode, on the right upper corner of the monitor shows time and “1080FHD” (white font). Time here shows how long a video the memory card is capable to record, and “1080FHD” shows the current video resolution.

Take photos

In video mode(📹), photo mode(📷) and while the microscope is recording, press “Capture” button(📷) to take photos

The button marked as a camera on (pic 2 #⑥) works the same way.

*** In playback mode the microscope can not take photos or videos**

Playback & manage files

Use button "M" to get into Playback mode, press "up" or "down" to browse files. In order to play videos, press "OK" to play it, "OK" to pause, "M" to stop

* In playback mode the microscope can not take photos or videos

Remote

*Freeze: Stop the image on the display, works in video mode, photo mode and while recording.

*Illumination+ & -: exposure compensation from +2.0 to -2.0.

*Sharpness up&down: three levels of sharpness: Soft/Normal/Strong. Those two buttons are both used to switch the levels, but in different orders.

*Contrast up&down: same principle as Sharpness



(Pic 8 Remote)

*Upside down: refer to pic as follow

Normal



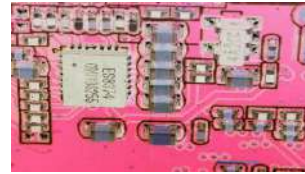
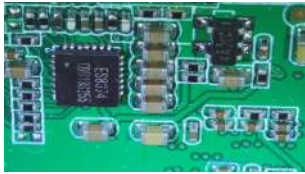
Upside down



*Inverse: refer to pic as follow

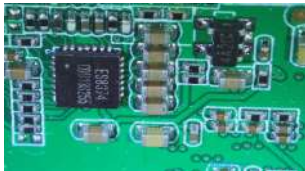
Normal

Inverse

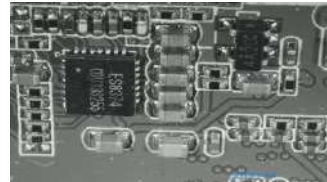


*Black&white: refer to pic as follow

Normal



Black&white

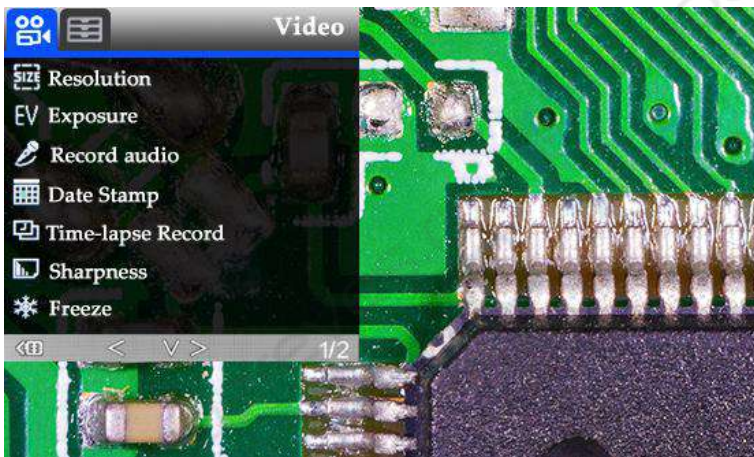


Settings

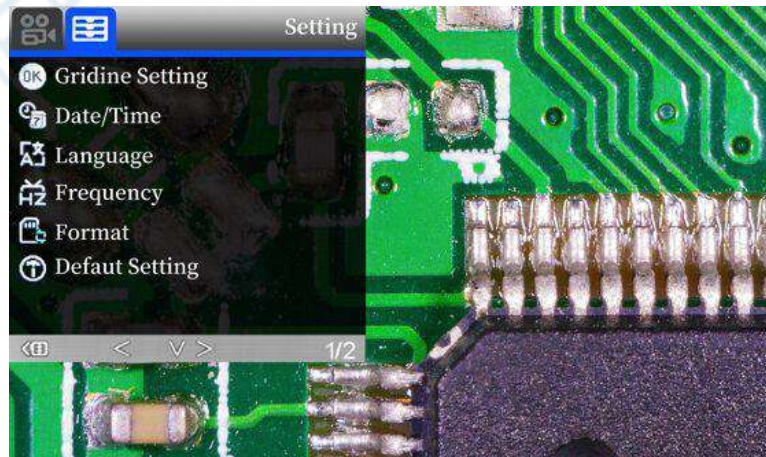
In any mode, press and hold M button until it shows video/photo/playback menu, press M again, get into Setting menu.

For example. In video mode, press and hold M button, it would show video menu as left below:

And then, press M again to get into settings menu, as right below:



(pic 9 video menu)



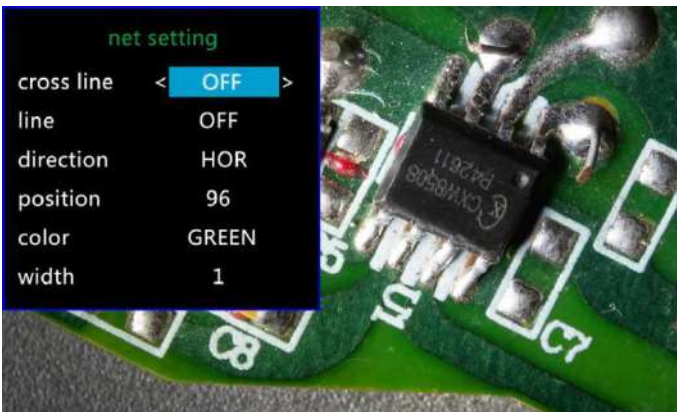
(pic 10 setting menu)

Gridline Settings (remote needed)

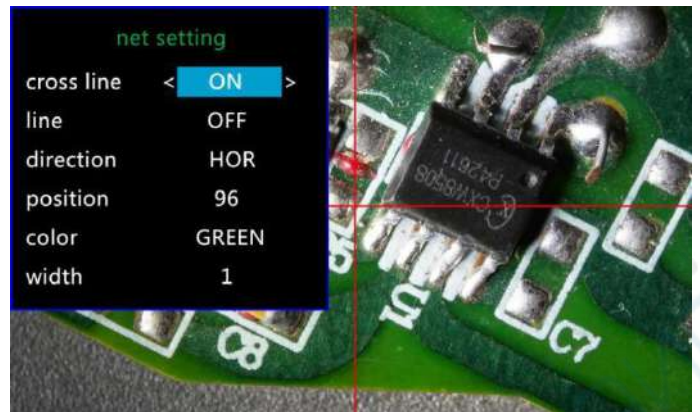
Use "Up" and "Down" to choose among "Cross Line" "Line" "Direction" "Location" "Color" and "Wide" . Use "Left" and "Right" (marked as a brightness +&- in pic 8) to change settings. **The microscope can't do this mission stand alone, The remote is needed.**

Cross line as its name says, it's a pair of vertical and horizontal lines located in the very middle in the

image.



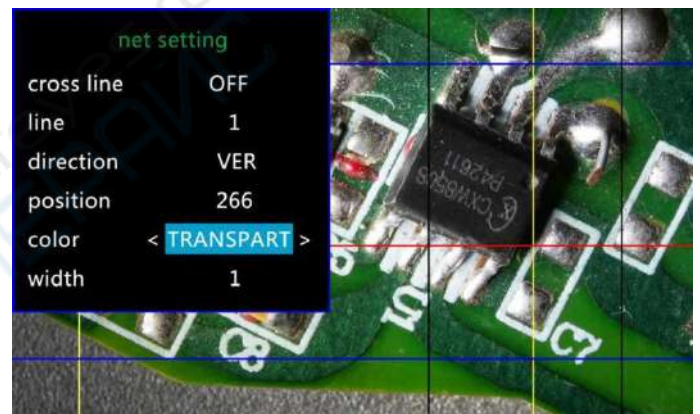
(Pic 11 Gridline Setting menu)



(Pic 12 Cross line on)

When you turn on the function "Line", there will be 8 lines showing up automatically (named as 1 to 8). For each one, you could change its direction ("HOR" or "VER", stand for "horizontal" and "vertical"), position, color and width.

To delete unnecessary line from the view, change its color to "TRANSPARENT" see the following pic.



(Pic 13 Delete line 1, before & after)

Date/Time Setting

Select "Date/Time" in setting menu, press OK button to get in time setting. Use "up" and "down" button to select correct number, OK to confirm and jump to the next one. After it's all done, press M to back to setting menu.

Save Setting

In order to let the microscope memorize the setting changes, please turn off the microscope by PRESSING THE POWER BUTTON ON THE MONITOR (press and hold until it switch off).

Setting changes won't be saved if you switch off the device in other ways.

Output to external devices

◆HDMI output

- firstly, make sure the external device is actual real FHD 1080P HDMI monitor, otherwise the display resolution can not reach to 1080P.
- Power on the microscope, and connect it to the HDMI monitor. The microscope has no built-in battery, so please make sure the microscope stays powered on the whole time.
- Switch on the microscope, place the specimen on the base or the slide holder, adjust the object distance and focus distance.
- When the microscope is connect to external devices, image data would transfer to the external device, so the microscope monitor display no image.
- HDMI output supports photo capture, but not video recording.

◆USB Output

Software installation

Where to download the software:

<https://bit.ly/3xCRDPL>

Currently software "Microscope Measure" only supports Windows system.

System requires: Windows XP SP3、 Windows 7、 Windows8、 Windows10

Runtime: Microsoft.Net Framework 4.0















Microsoft Visual C++ 2010





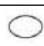

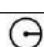


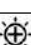
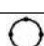

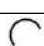

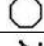

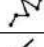



If there isn' t complete either of the runtime mentions above in your computer system, it would report wrong during the installation process.

If you couldn' t open the download link above, contact our customer service.

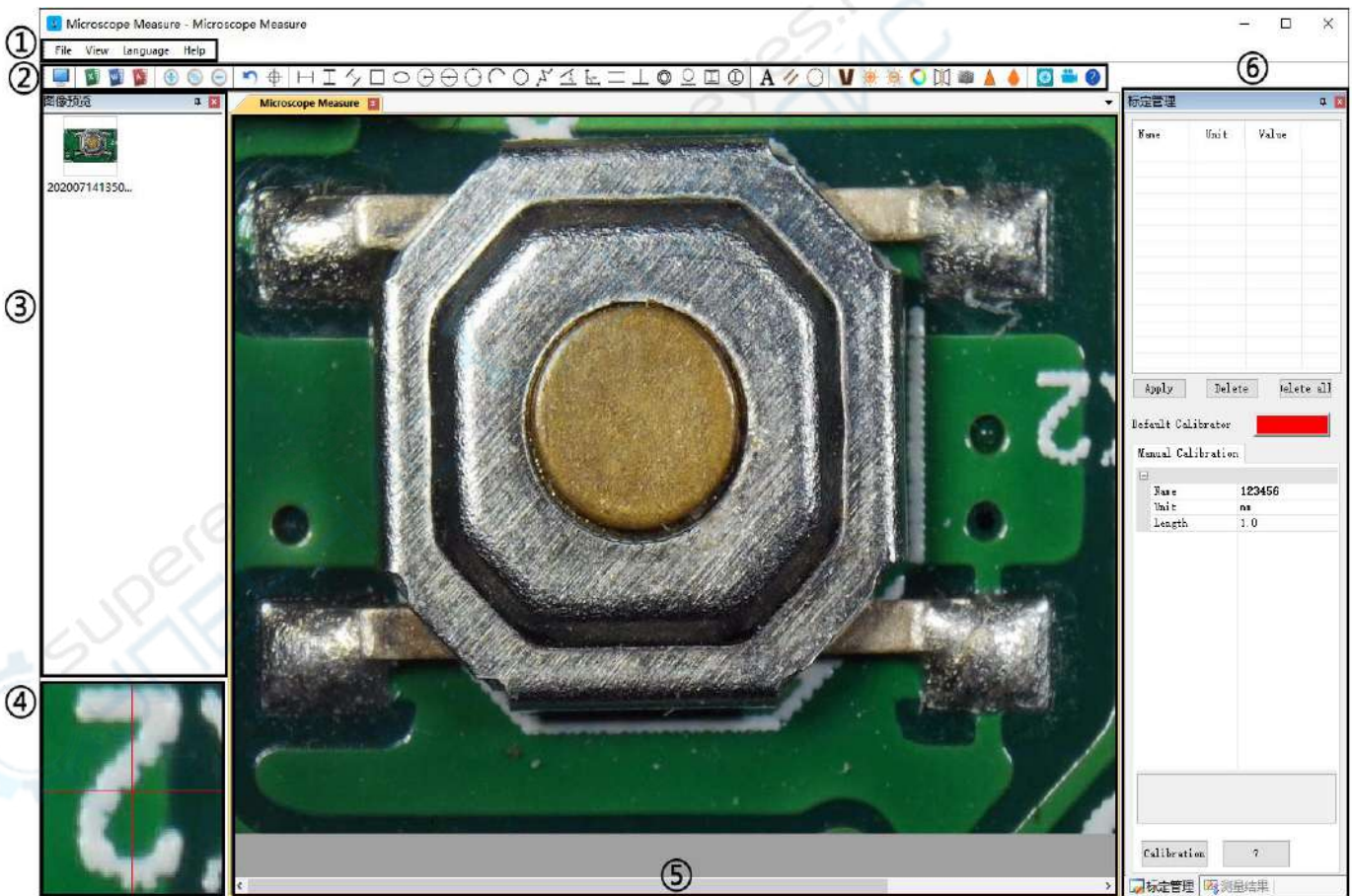
After done downloading, open the zip file and run it.

* Icons definitions

	Zoom In		Measuring a 3-points-angle (degree)
	Back to original size		Distance between parallel lines(Length)
	Zoom out		Distance from a point to a line (Length)
	Undoes the last action		Distance between 2 circles (Radius, length)
	Cross hairs (crosier,4 grid, 8 grid)		Distance from a line to a circle(Radius, length)
	Horizontal distance of 2 points		Add a square mark
	Vertical distance of 2 points		Add a circle mark

	distance of 2 points		Add text
	Measure a rectangular (width,height, circumference&area)		Distance between 2 lines(Length)
	Measure an ellipse(Long-axis radius, short-axis radius, circumference&area)		3 points circle (radius, circumference&area)
	Measure a radius circle(radius, circumference&area)		Edge detection
	Measure a diameter circle (diameter, circumference&area)		Brightness increase/decrease
	Measure a 3 points circle(radius, circumference&area)		Flip horizontal
	Measure a 3 points arc		Sharpen
	Measure a polygon (circumference&area)		Smooth
	Measure fold-lines (length)		Take a picture
	Measure a 4 points angle (degree)		Take a video

* Interface Definitions and Functions



①Main menu:

Where users to open different devices or import pictures to observe or edit, do video settings or save settings, choose which windows to show or hide etc.

②toolbar:

Where show tools that are used to do measuring and image analysis. Definition and function of different tools has been given in chapter "Icons definitions" . Users can choose to hide or show this toolbar window following path: 'View→Toolbars and Docking Windows→Standard' .

③ Pictures browser:

Where users review all pictures they' ve captured. Users can also edit the picture by right-clicking the picture and open it in the main operating window. Choose 'View→Toolbars and Docking Windows→Picture browser' to show or hide this window.

④ Secondary operating window:

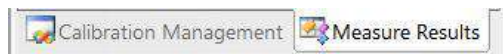
This window is to digital zoom in the area around cursor. With help of this window, the result of measuring can be much more precisely.

⑤ Main operating window:

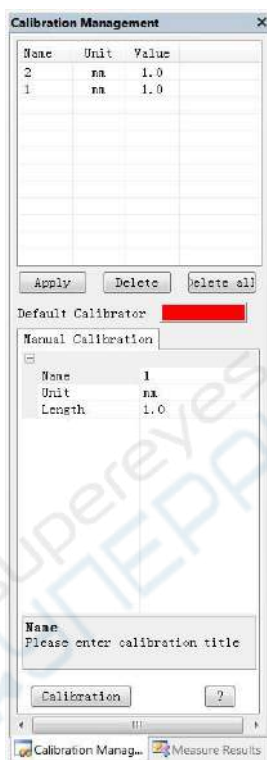
This windows shows the full view from the microscope. And it is also the place where users do measuring and image analysis.

⑥ Calibration Management and Measuring Results:

These two windows shows at the same place, users can switch them by clicking.



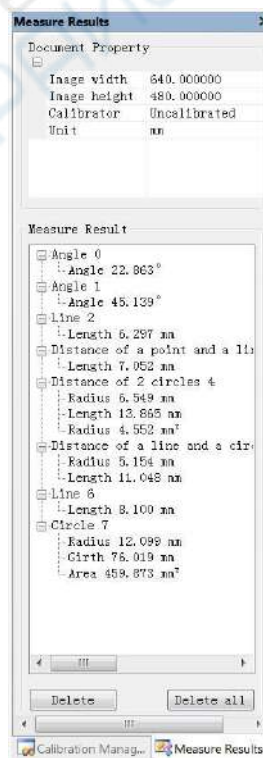
◆ Calibration Management



→ Shows the list of different Calibrations. Users can choose to apply or delete.

→Where to set new Calibrators. (The details of how to set calibrator would be given in another chapter)

◆ Measure Results



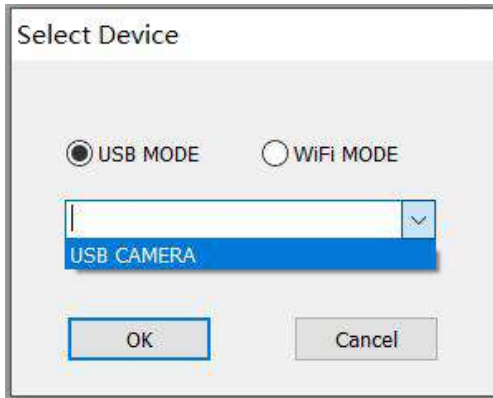
→ Shows the size of the whole view. Users Can change it in 'File→Videosetting→Video capture pin→(S)' .

→ Shows all results of measuring.

*** Operating Steps**

- 1) Material: A computer (Windows system, with software 'Microscope Measure'); USB microscope (device name: 'USB CAMERA'), A ruler.
- 2) Steps

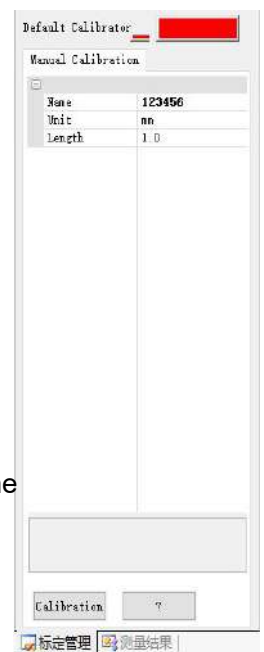
- 1, Connect the microscope to computer via the USB cable included. After the microscope monitor displays few options, choose "USB camera" by pressing button "down" & "OK" or using remote.
- 2, Open software "Microscope Measure" .
- 3, Click "File" → "Open" → "Open Device" → "USB MODE" → "USB CAMERA" .

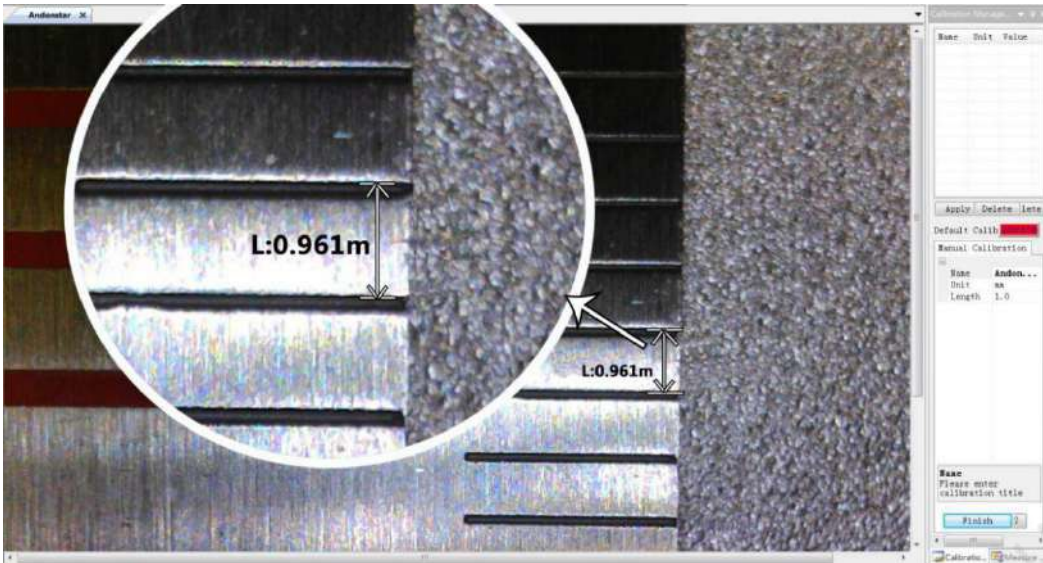


* Functions

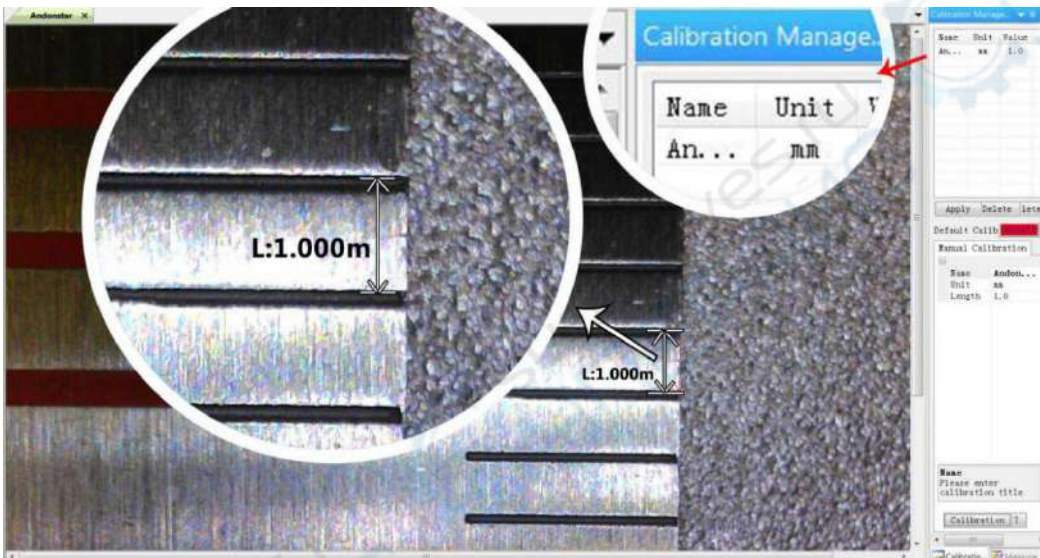
1) Calibration

- 1, Put the ruler under the digital microscope, adjust the focusing tube and the height of the stand, to get the best clearance and desired magnification. (After its done, keep the object distance for the rest steps)
- 2, In the 'Calibration management' set the name and unit length of the new calibration(refer the picture on the right). Then, click 'Calibration', meanwhile, the 'I' in the toolbar should have been chosen automatically. If no, please choose it yourselves.
- 3, Move the cursor to the main operation window, draw a unit length line with help of the ruler(it doesn't matter if the length result shows differently). After these, click the 'Finish' button in the bottom of the 'Calibration Management' window.
- 4, Check. The length of the line you draw in step 3 should now appear as the unit length. The name of the new calibration should have showed in the list of calibrations.





3)



)

2) Measuring

- 1, Choose the tool you need to do measuring in the toolbar.
- 2, Click dots or draw lines that you need to measure in the main operating window.
- 3, Place the results of measuring in a proper place around the target.

3) Special Effect

·Includes: Edge detection, Inverse color, Flip horizontal, Relief, Sharpen and Smooth.

·Steps:

- 1, Choose the special effect you need in the toolbar.
- 2, Move your cursor to the main operating window, Left-click and hold to draw a rectangle to cover the whole target area, release your mouse, get the special effect result.
- 3, Left click again, end the special effect.

PS: Not like other special effect, “Flip horizontal” would apply to the whole view, instead of the target rectangle.

4) Capture and Recording

·Capture


1, Click '  ' to capture.

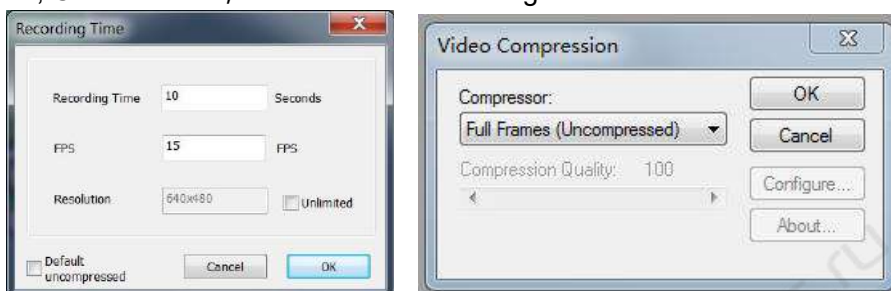
2, The result of capture can be reviewed and deleted in the 'Picture browser' window.

3, Check and change the save path: “File→Save Setting→Path”.

·Recording

1, Choose the video resolution as 640*480 following path “File→Video Setting→Video Capture Pin→Output size(S)”

2, Click “  ” , finish the other settings and start to record.



3, Once it starts to record, it would show a timer on the upper left corner.

4, Check and change the save path: “File→Save Setting→Path”.

FAQ

1. Why it says ‘missing files’ during installation or initiator procedure?

Please confirm that in the system there are Microsoft. Net Framework 4.0 and Microsoft Visual C++ 2010 runtime.

2. The software works fine, but the software can not recognize the microscope.

Firstly, please make sure that you have connected the microscope to the PC properly and have chosen ‘USB camera’ on the microscope monitor. Secondly, if there is still no image, please check the ‘Device Manager’ of your PC, delete the previous USB camera from “image devices”, then rescan device changes. Let the system identifies again. After its done, in the ‘Imaging devices’ there should have shown the current USB camera device name, which is “USB Camera”. Then reboot the software.

3. Why there is a measurement error? In order to get a more precise measure result, you would need a more precise calibration. And when you apply a calibrator to measure a length, you need to keep the magnification still, which means you need to keep the object distance still as when you set the calibration.

4. Why the microscope can’t be switch on? Please connect the microscope properly as pic 4, and make sure it has stable and strong 5V 2A power supply. If it doesn’t work, pin the reset hole at the back side of the

monitor.

5. Why can't I get a clear image? Please confirm the illumination work properly, and shine directly to the surface of the specimen. Adjust the height of the boom arm, or the secondary bracket lift to change the distance from the lens to the specimen, and turn the focusing tube properly. If the image is still blurry, please clean the bottom of the lens use a piece of clean and soft cloth.

6. Why the setting changes can't be memorized? After changing settings, press and hold the button on the monitor to switch off the device. DO NOT cut off the power supply directly or use the dimmer cable to switch off the device.

7. Why the microscope reboots repeatedly? Please check the if the cable connection is firm and if the power supply is stable and strong enough. Please check your power adapter is high quality 5V 2A.

8. Why it shows "card error" or "card is full" after inserting memory card to the device. Please format the card after insert it into the device. (Format steps refer to chapter "Save files to micro SD card")

PS: If there are other questions or problems, please contact us as soon as possible, we will do our best to help! Thanks for your support!

Warranty

Warranty		
Name:	Address:	
Phone number:	Post code:	Email:
Model name:	Purchase date:	
Fault details:		
Date:	Fault description:	
Notice:		
Our warranty does not cover:		
1	If the purchaser can not provide a purchase proof, or it shows the product was bought as second hand condition	
2	If the product has been placed or used in an improper environment, such as heat, wet, wrong power supply environment etc.	
3	If the fault caused by accident, oversight, faulty operation or natural disasters etc.	
4	If the fault caused by people who are not belong to authorized organizations of our company during repacking, repair, dismantle, Or if users repack, repair or dismantle the device not following our advice.	
5	Out of warranty period.	