

Bakon[®] 950D

Portable Digital Control Temperatures Soldering Station Instruction Manual

Character:

- Light handle, no feeling of fatigue for long time use.
- various tips for choice and easy to replace.
- Soldering iron choice: BK950 with T3 series heating element (with tips)

Specification:

Name	Soldering Station
Input voltage	AC100-240V 50/60HZ
Power	50W
Control station	ESD soldering station
Output voltage	AC20V
Temperature range	180-450 °C/356-842°F
Dimension	133(L)*60(W)*35mm(H)
Weight(Including wire)	405g

Soldering iron handle:

Name	Soldering Iron handle
Tip to Ground Resistance	Below 2 ohms
Tip to Ground Potential	Below 2mV
Heating element	T3 heating element
Wire	1.2m
Length(exclusive wire)	120mm
Weight(exclusive wire)	60g

Above specification subject to the real products, for any change no prior notice.

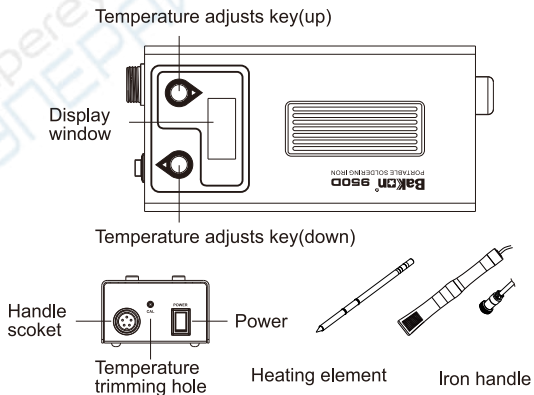
Temperature Mode:

Mode	Temp.	Celsius (°C)	Fahrenheit (°F)
P1		250	480
P2		300	570
P3		350	660
P4		400	750
P5		450	840

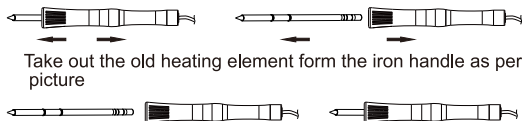
Packing list:

Soldering station	1
Iron Handle(No T3 heating element)	1
Instruction Manual	1
Guarantee card	1

Please check the packing to confirm that all items are correct.



Replace heating hole element



Take out the old heating element form the iron handle as per above picture



Take out the old heating element form the iron handle as per above picture

Note: If it is still do not heating up after replacing heating element, please move the heating element.

Fahrenheit/Celsius switch: In shutdown state, press the up key and open the power switch at the same time, thus enter into Fahrenheit mode, In shutdown state, press the down key and open the power switch at the same time, thus enter into Celsius mode.

Temperature Mode Shift: Press temperature adjusts key shortly, press it shortly which shows present temperature mode, and press it again shortly which is to the next mode, P1-P5 cycle.

Precision set temperature: For example when set temperature 380°C, press adjusts keys up or down 3s which can add, subtract temperature.

Temperature calibration: Present set temperature 350°C, test real temperature 340°C, calibration method as below:

Press the up and down keys in the same time, there is scintillation for hundreds and tens on the soldering station, adjust the temperature digit number by down keys (hundred, ten, single), and adjust temperature by up keys, then confirm. And test the real temperature again by thermometer, if any tolerance kindly repeat above step. (School / Celsius need to calibration temperature respectively)

Note: please readjust temperature after replacing heating element or there will be temperature tolerance.

Notice:

Warning this instruction manual. "Warning" and "Notice" are defined as follows:

Warning: Abuse may cause users die or hurt

Notice: Abuse may cause users hurt or damage the products. So kindly compliance with below:

Notice

When the power is turned on, soldering tip's temperature is higher than 150 °C (356 °F) to 356 °C (842 °F). Abuse may cause burns or fires, do please obey the following items:

This machine has been calibrated temperature when out of factory, but because there is some resistance tolerance for heating element, suggest recalibrate temperature when the first time using or replace heating element.

Do not touch soldering tip metal part

Do not use soldering tip near flammable objects

Inform worker that soldering tip is very hot, may cause dangerous accidents. Do please turn off the power when rest or finish soldering.

When replacing parts or insert soldering tip must be turn off the power, and wait until the tips back to room temperature.

To avoid damaging soldering station and maintain a safe working environment, do please comply with the following matters:

Do not use soldering tips to do other job except normal soldering.

Do not knock working table to remove flux residue which may damage the soldering station seriously.

Do not change the soldering station.

Do not wet soldering station and can not use soldering station when hand is wet.

There will be smoke when soldering, workshop shall have good ventilation facilities.

When using soldering station, do not do anything that may hurt body or damage objects happen.

Bakon®

SHENZHEN BAKON ELECTRONIC TECHNOLOGY CO., LTD.

ADD: 5th Floor, 1st building, Fu Bi Lun Industrial Area, Chaoyang Road, Songgang Street, Bao'An District, Shenzhen, China 518105

TEL: +86 755 89575688 FAX: +86 755 89574599

SITE: www.bakon.cn Email: postmaster@bakon.cn

Attention:

The soldering station adopts an integrated plug-in heating core, which has a fast heating speed, long service life and convenient replacement. In order to ensure the good performance of the soldering station, please select the original heating core and soldering iron head, thank you!

Repair Warranty (Principle)

Model: _____ Date of Production: _____

Customer: _____ Date of Purchase: _____

Product No: _____ Issued by: _____

From the date of purchasing, we provide ___months repair warranty

After Sale Suggestion (Subordinate)

Customer: _____

Delivery Date: _____ Tel: _____

Address: _____

Distributor: _____

Invoice NO: _____ Invoice Date: _____

Product Model: _____ Product NO: _____

Warranty Terms:

- 1.The table for feedback from customers should be returned to our company within a month after the date of purchase.In this way,customers may enjoy one-month repair warranty.
- 2.Repair Warranty and Purchase Certificate should be presented.The warranty only applies when all the required documents are available.
- 3.The warranty does not apply when the equipment has received damage through abuse, carelessness,improper installation,accident or mishandling during shipment,connecting to improper line voltage,or has been serviced by anyone other than an authorized factory representative.
- 4.After the warranty period,we are ready to provide charged repair service,perfect as always.

Dear Sir / Madam :

Thank you for purchasing our products.To improve our service and ensure the proper use of our products,please kindly write down your suggestions.

Name of Product: _____

Date of Purchase: _____

Your Suggestions: _____

Package: _____

Functions: _____

Others: _____

Date: _____

Bakon[®]

GUARANTEE CARD

The product conforms to the technical standards

Q.C . _____

SHENZHEN BAKON ELECTRONIC TECHNOLOGY CO.,LTD.

Warranty card

The warranty is valid in one year since the purchase of this ,any quality problem found,please send back to us with courier fee to be collected,upon receipt of the returning unit,we will repair it and send back to customer within two working days.

Notice:Please enclose the warranty card along with the returning product, or else we have the right to reject the repairing,thanks for your corporation.