

GETTING START

Install Software

Caution: You must install the software before using the oscilloscope.

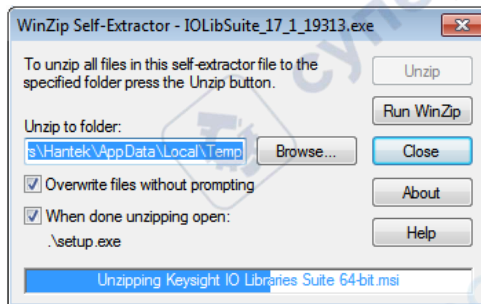
1. While in Windows, insert the installation CD into the CD-ROM drive.
2. The installation should start up automatically. Otherwise in Windows Explorer, switch to the CD-ROM drive and run Setup.exe. According to the installation information, please install it step by step.

Download and install IO libraries suite.

You can install the software named IOLibSuite in the CD.

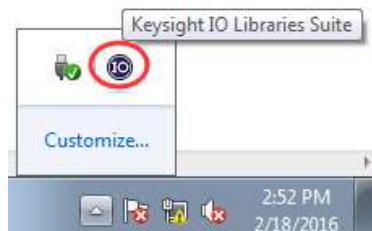
Note: Please download and install *IOLibSuite_16_3_17218.exe* for PC of Windows XP system.

Double click IO Libraries Suite program and install it. According to the installation information, please install it step by step. The installation maybe takes several minutes.



IOLibSuite_17_2_20605_2

After installation, you can see it in bottom right corner.



Connect DSO Scope to PC

Two connection modes:

USB connection mode: Refer to USB CONNECTION.

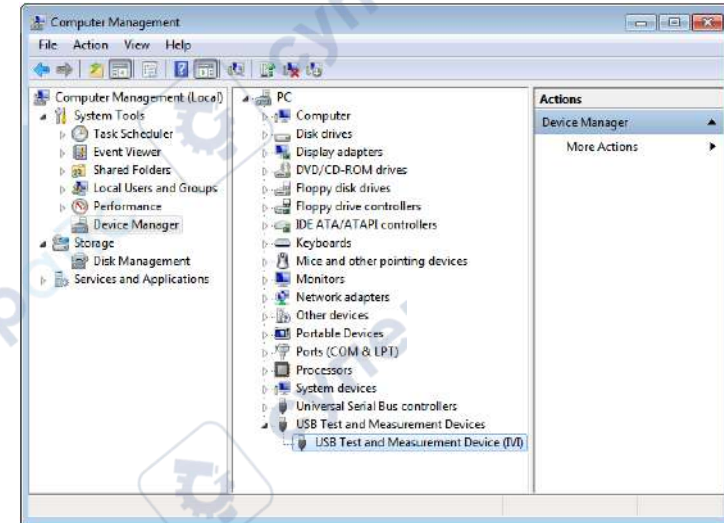
LAN connection mode: Refer to LAN CONNECTION.

USB CONNECTION

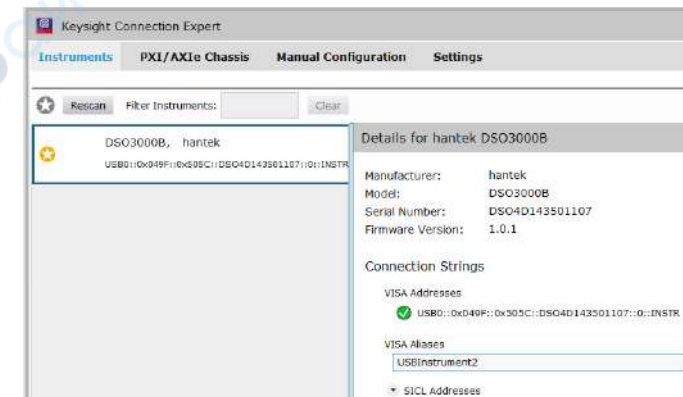
1. Power on. Connect DSO scope to PC via USB cable. The driver will install by itself. When the driver is installed successfully, there will have a prompt as follows:



2. After installing successfully, users can see driver information in device manager (It is same in LAN mode).



3. Click Keysight IO libraries suite icon in bottom right corner, and choice "Connection Expert". Now users can see the device information.

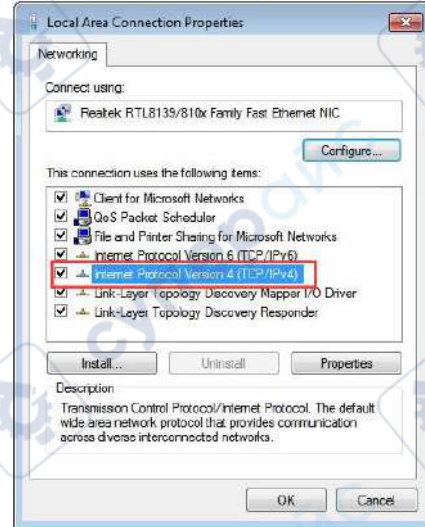
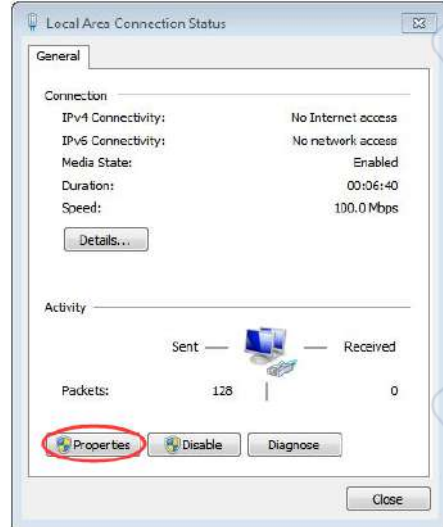
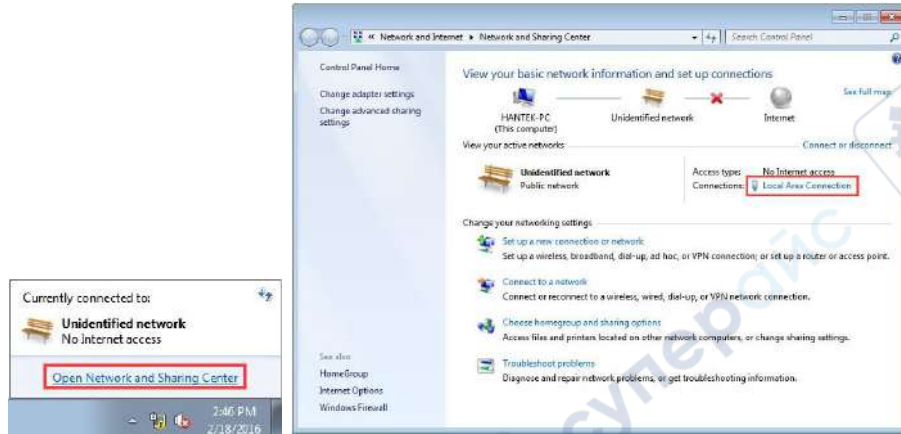


4. If installing unsuccessfully, right click to update the driver manually, and choice the correct route: C:\Program Files\IVI Foundation\IVI USB Staging\b841aa80\Windows
5. Double click "DSO-xxxx" shortcut on desktop to open the software of DSO device. The device is connected with PC successfully. You can see "Connected" tip in status column.

LAN CONNECTION

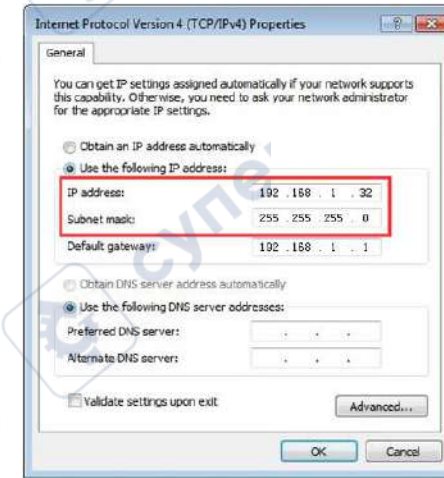
1. Set up local area network (LAN)

- 1) Connect router with DSO scope via one LAN cable. Connect router with PC via the another LAN cable.
- 2) "Open Network and Sharing Center->Local Area Connection-> Properties->Internet Protocol Version (TCP/IPv4)". Set the right IP of PC in same network segment with the oscilloscope's network name. The default IP is 192.168.1.127.

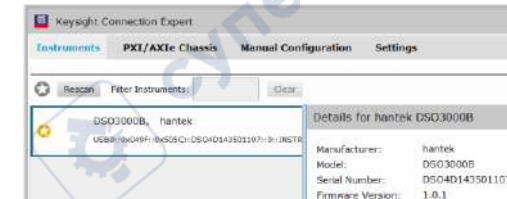


- 3) Set PC's IP to 192.168.1.2 or others(192.168.1.2~192.168.1.255) except the IP of DSO scope (default 192.168.1.127). For example, the IP of the device is 192.168.1.32. Set Subnet mask in default.

LAN CONNECTION



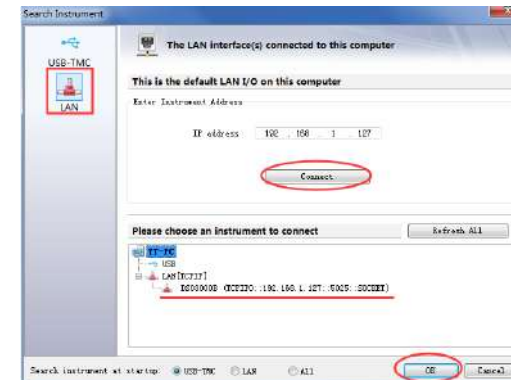
Click Keysight IO libraries suite icon in bottom right corner, and choice "Connection Expert". Now users can see the device information.



2. Connect Device

Double click "DSO-xxxx" shortcut on desktop(Or click "File->Connect" menu) to open the software of DSO device.

- 1) Select "LAN" type, the device connect setting dialog is as shown below:



- 2) The device is connected with PC successfully. You can see "Connected" tip in status column.

Note: In LAN mode, there is no need to use 12V power adapter.