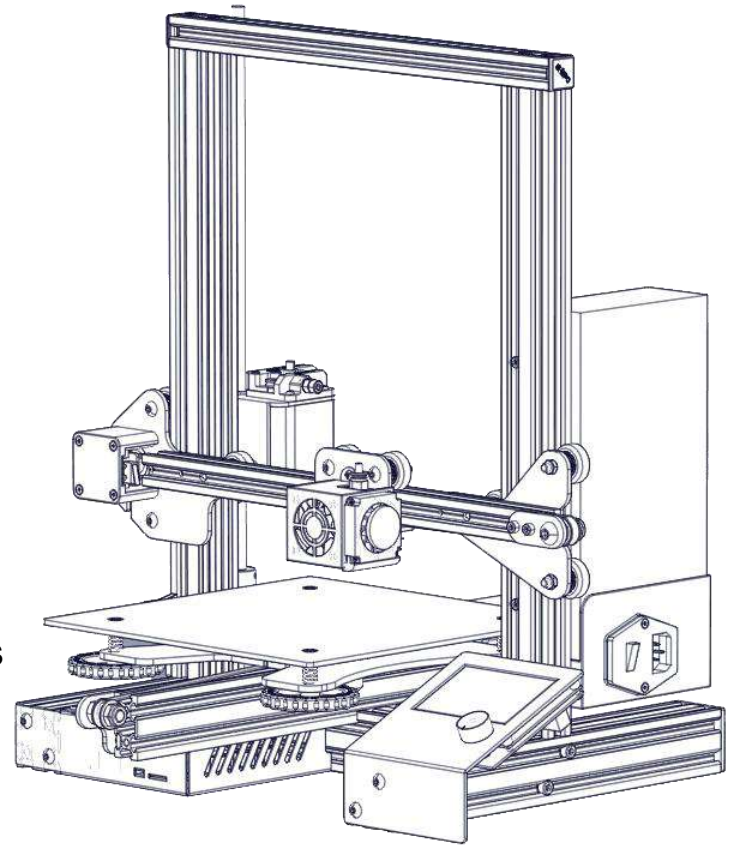




# Ender-3 3D Printer

## Instructions for assembly

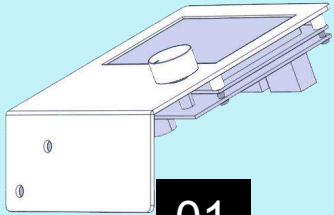
- ◆ This guide is for the Ender-3 3D printer.
- ◆ Select the correct input voltage to match your local mains (230V or 115V).
- ◆ Because of software/hardware upgrades and model differences, new revisions may not be listed in this guide.
- ◆ Please plug the Power cord into a three-hole power jack.
- ◆ Detailed instructions for use are available on the SD card.



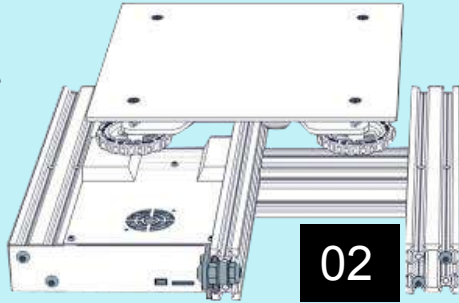
V3.0

# List 1

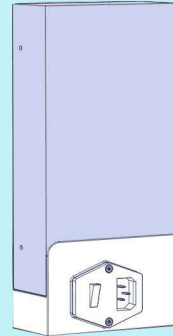
## Assemblies



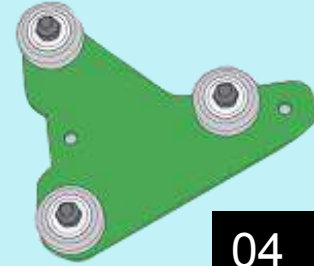
01



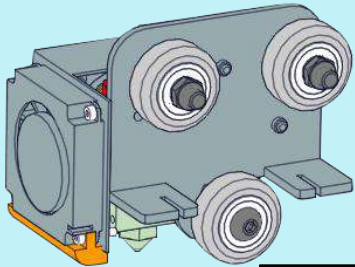
02



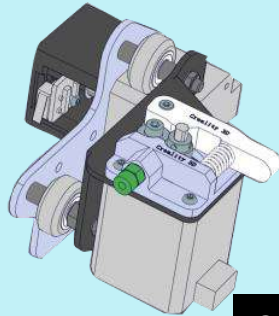
03



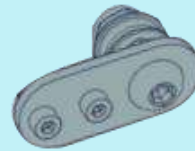
04



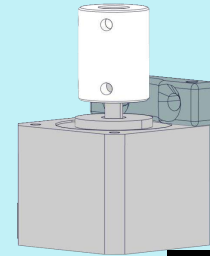
05



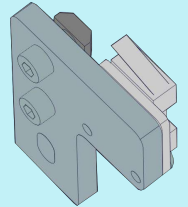
06



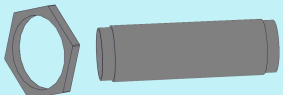
07



08

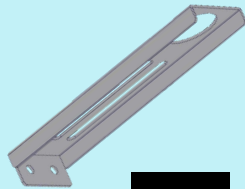


09



2pcs

10



11

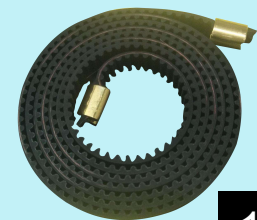


2pcs

12



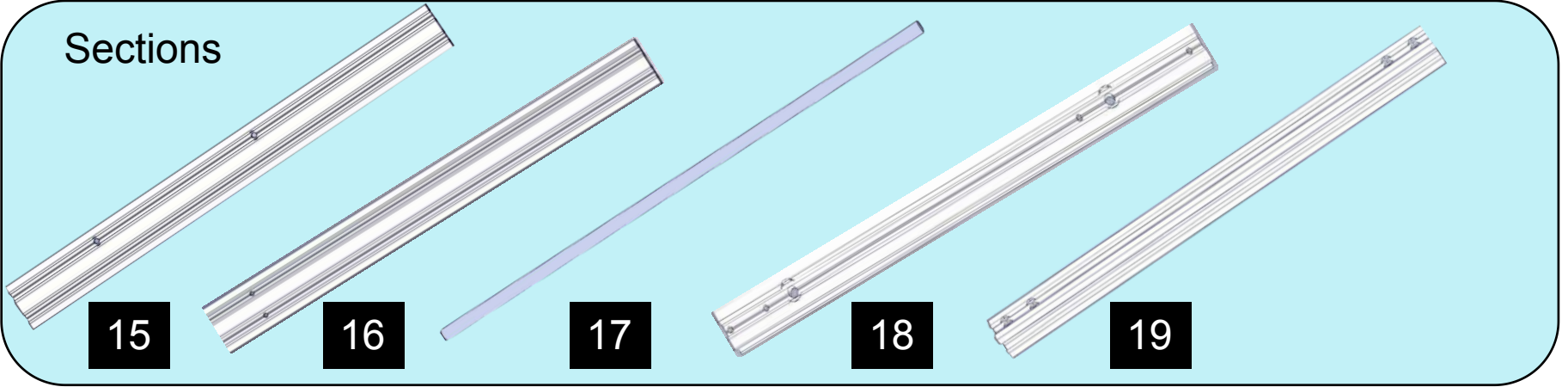
13



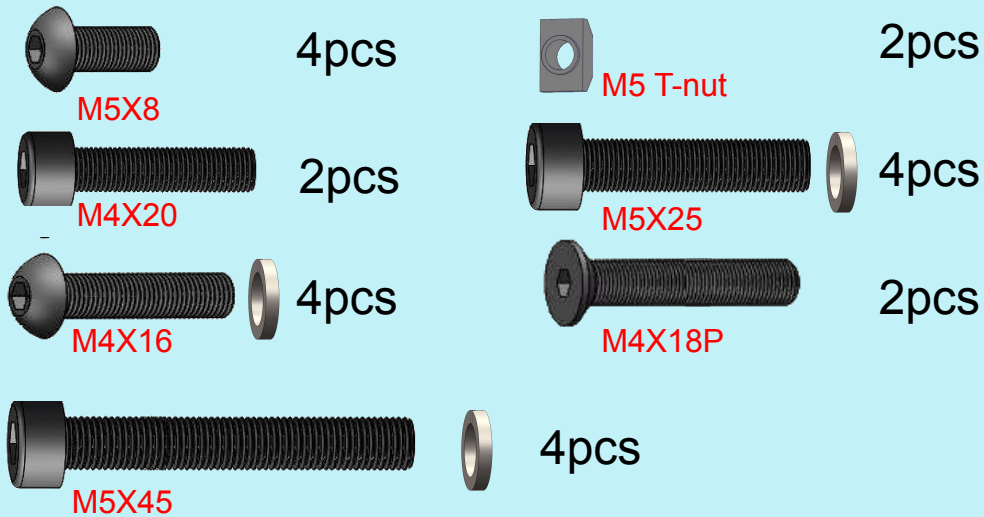
14

# List 2

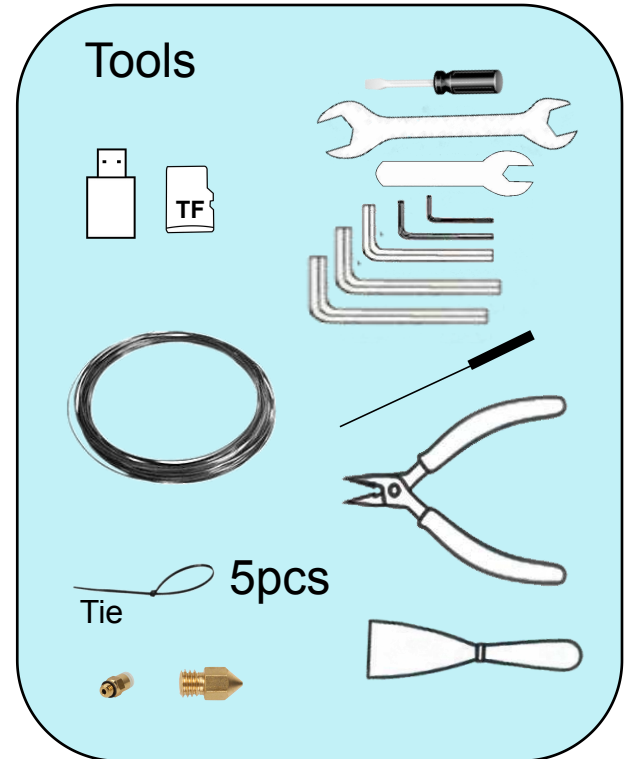
## Sections



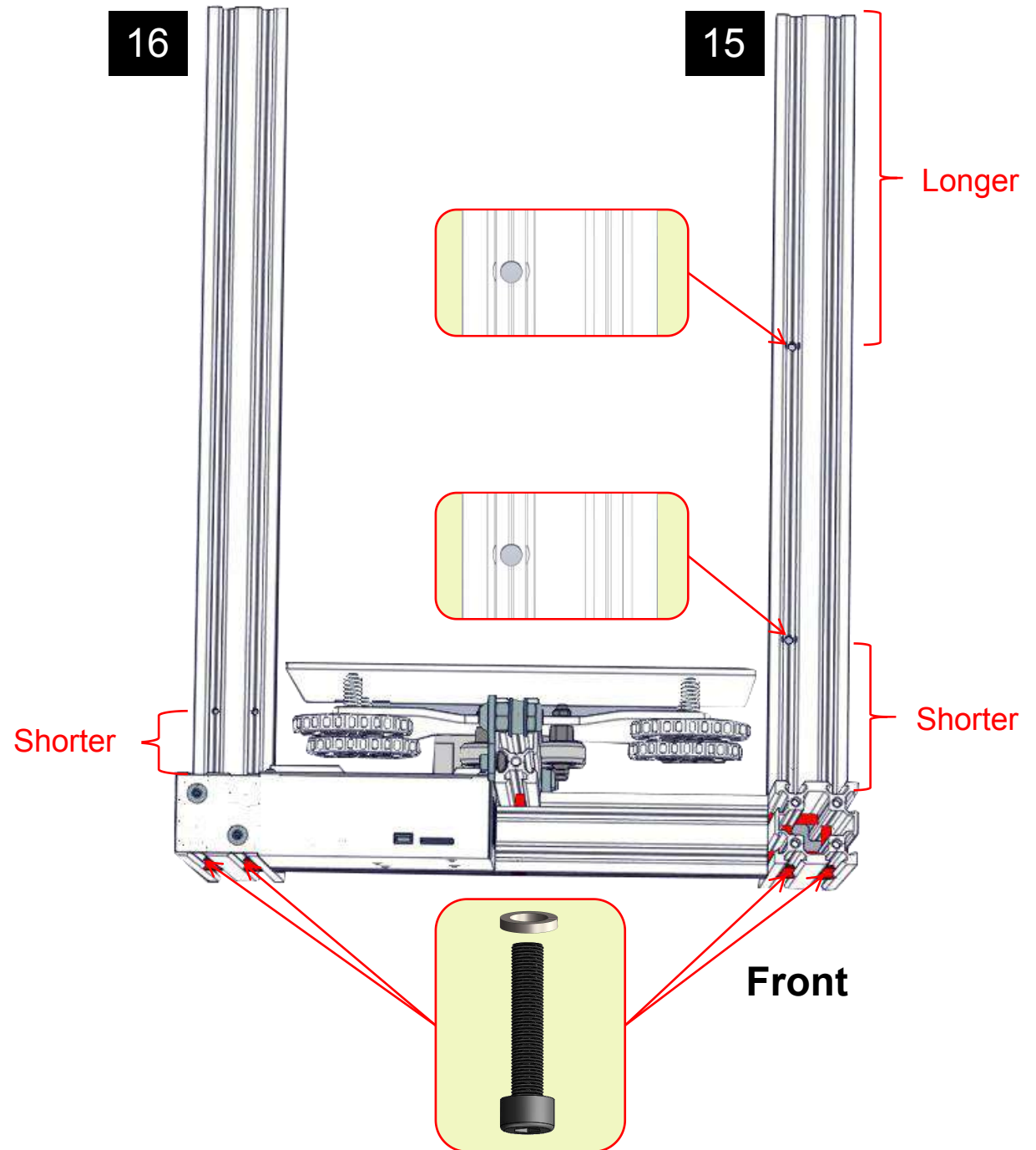
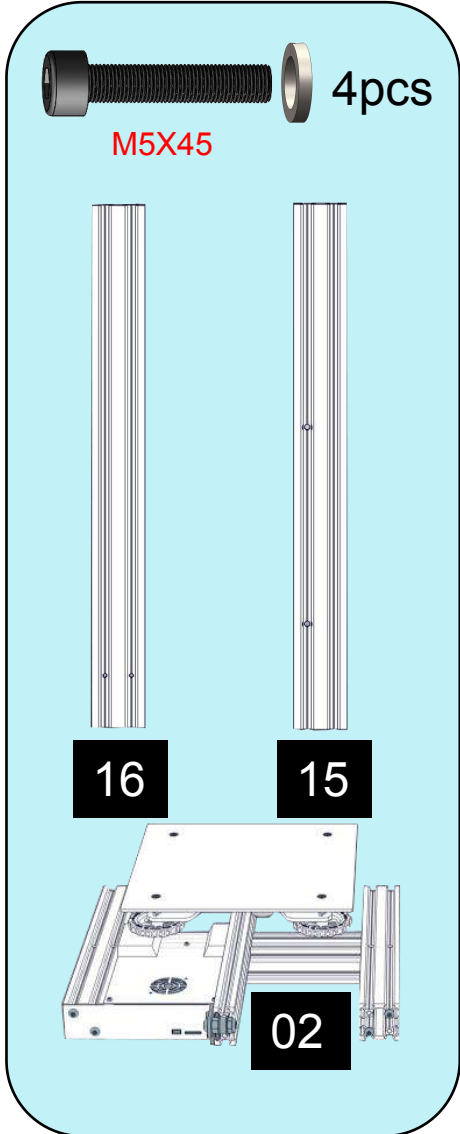
## Fasteners



## Tools



# Step 1

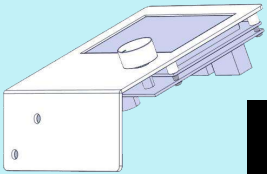


# Step 2



2pcs

M5X8

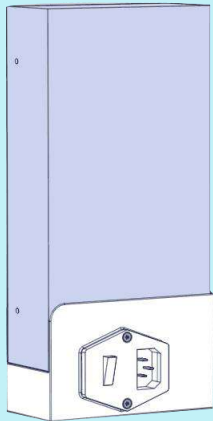


01

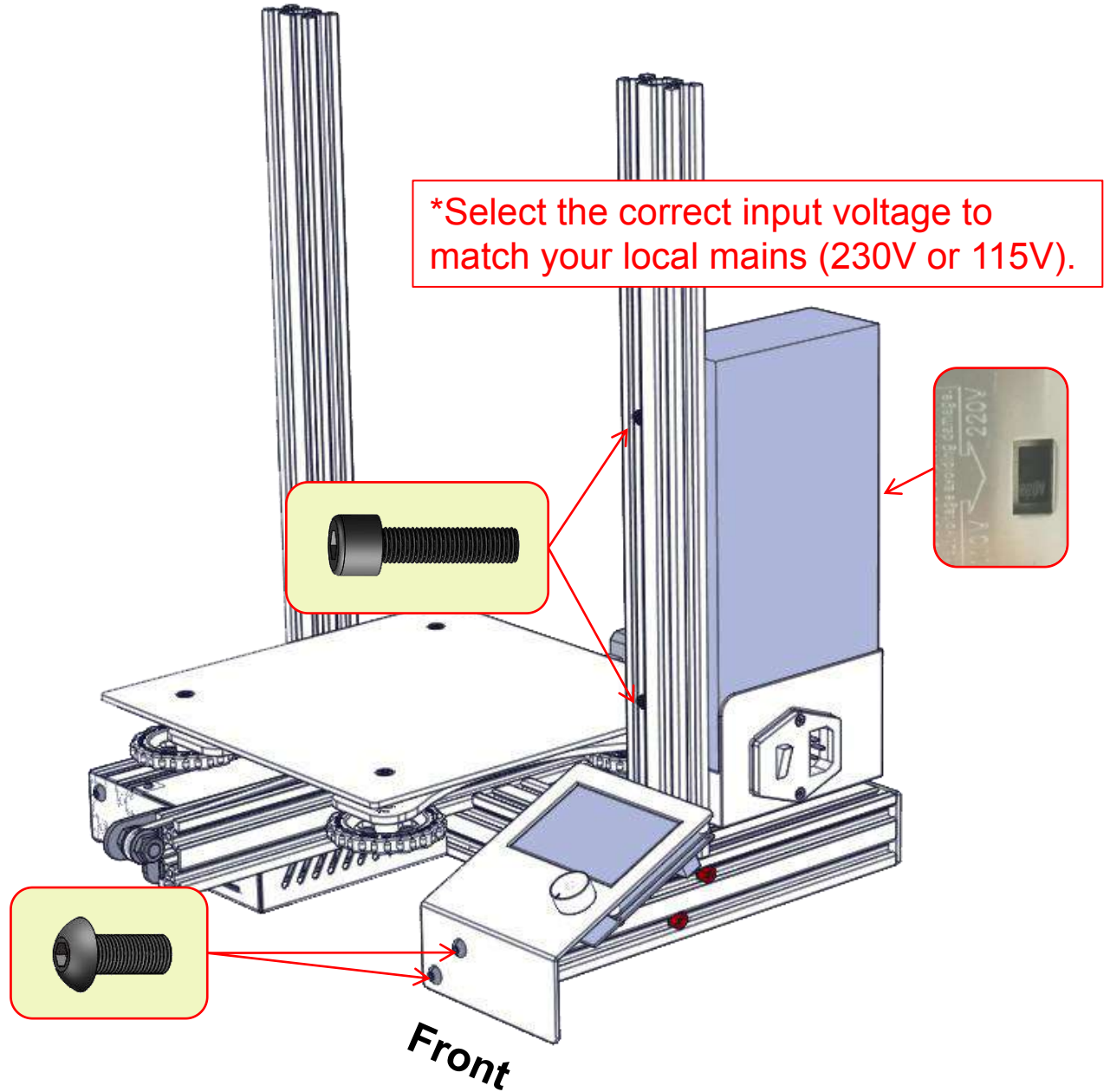


2pcs

M4X20

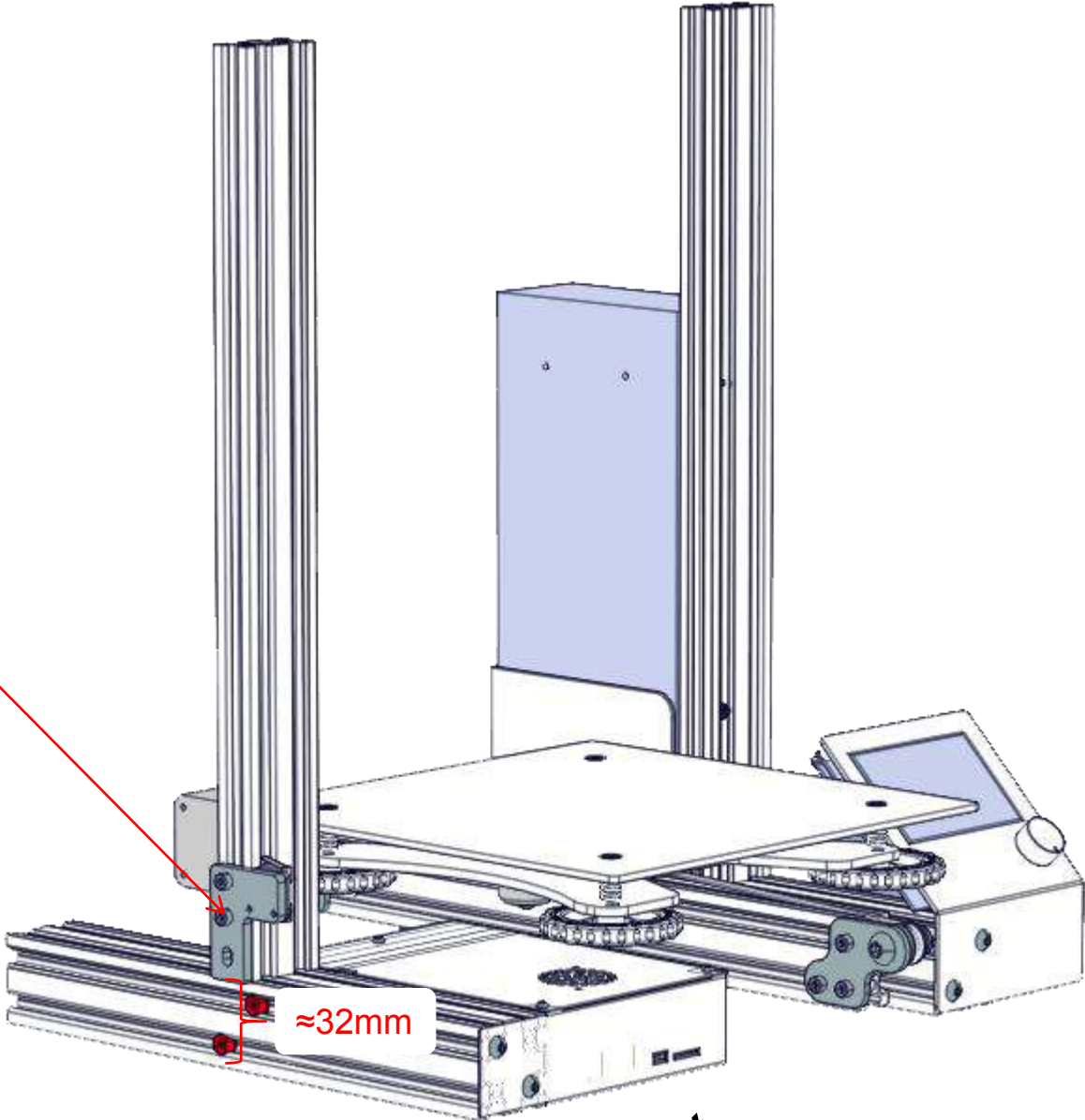
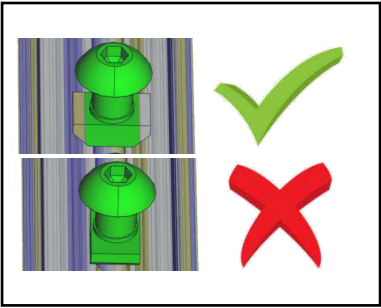
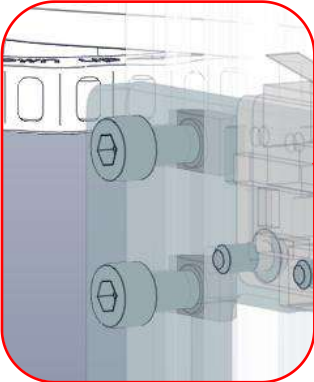
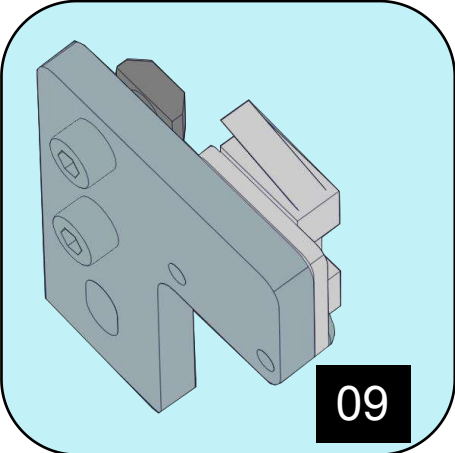


03



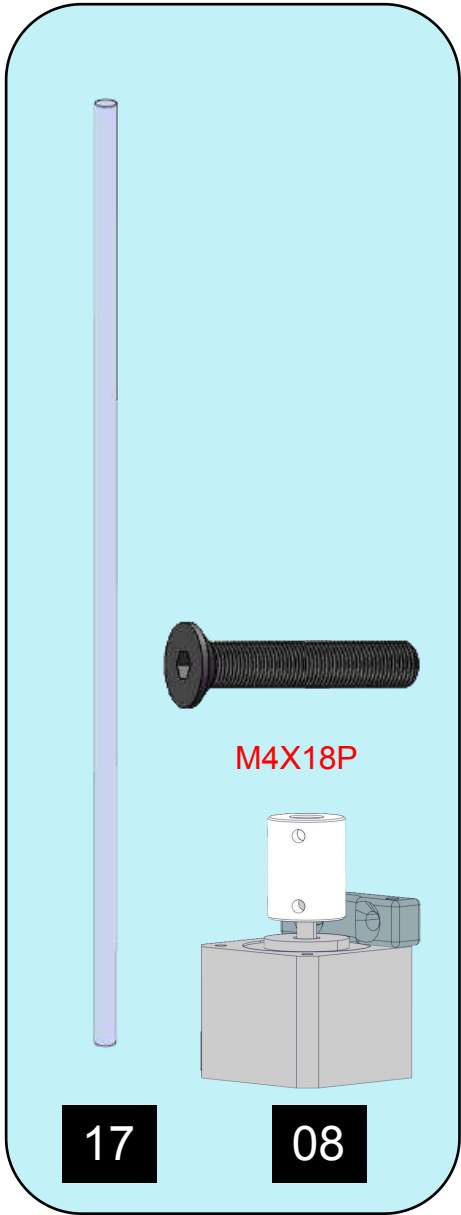
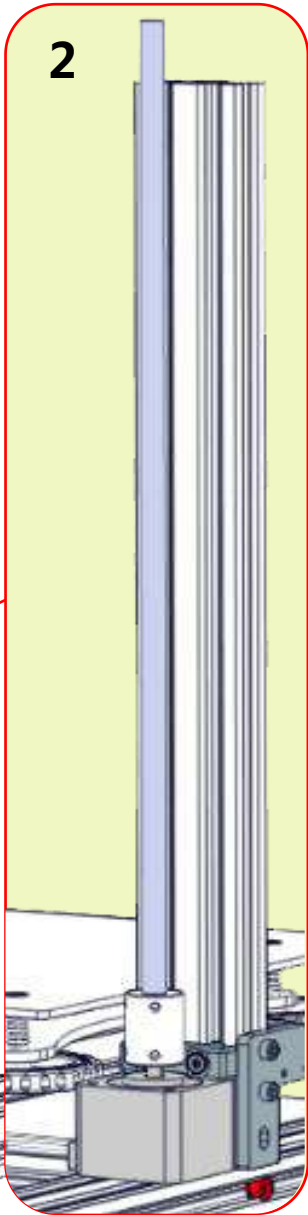
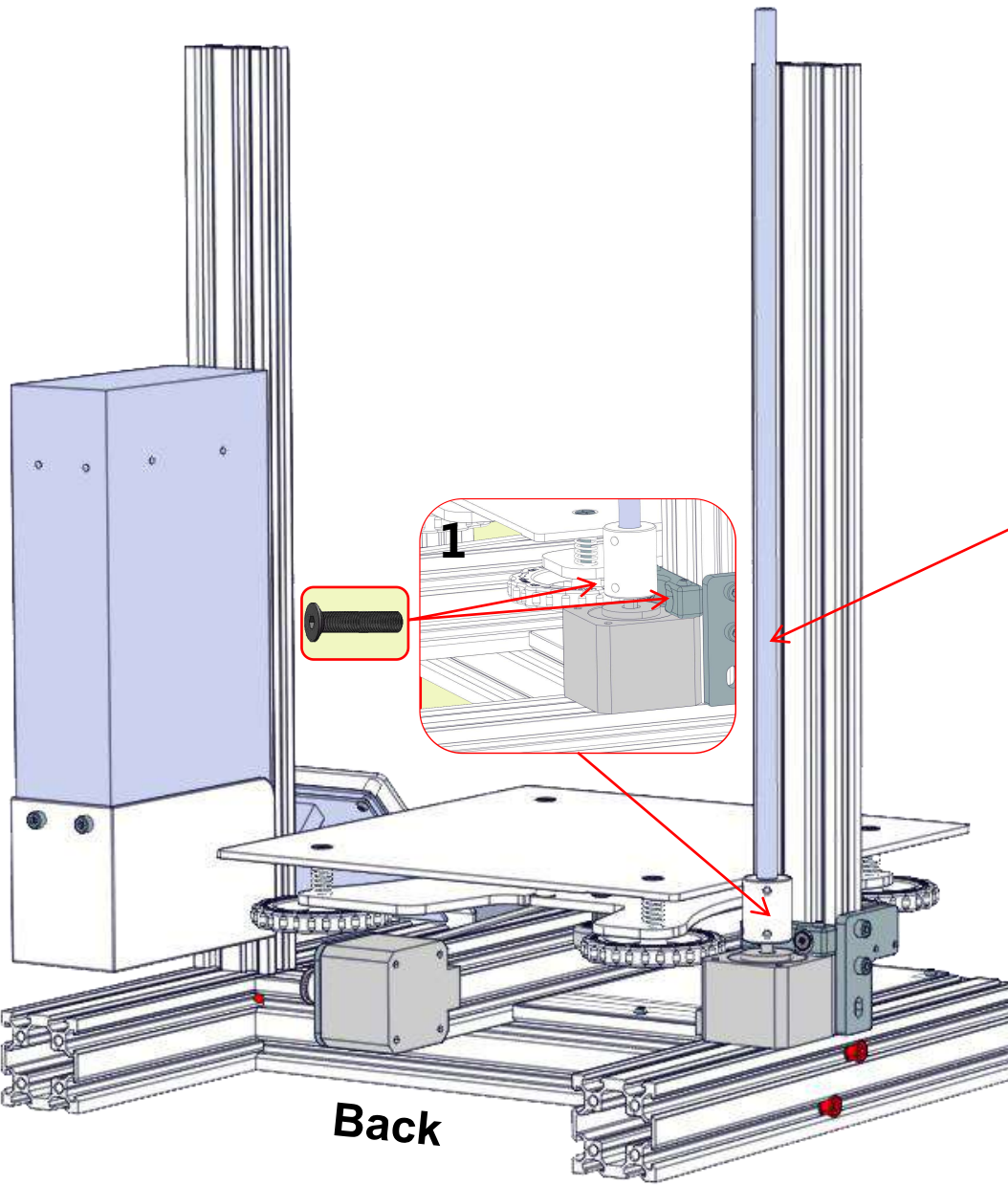


# Step 3

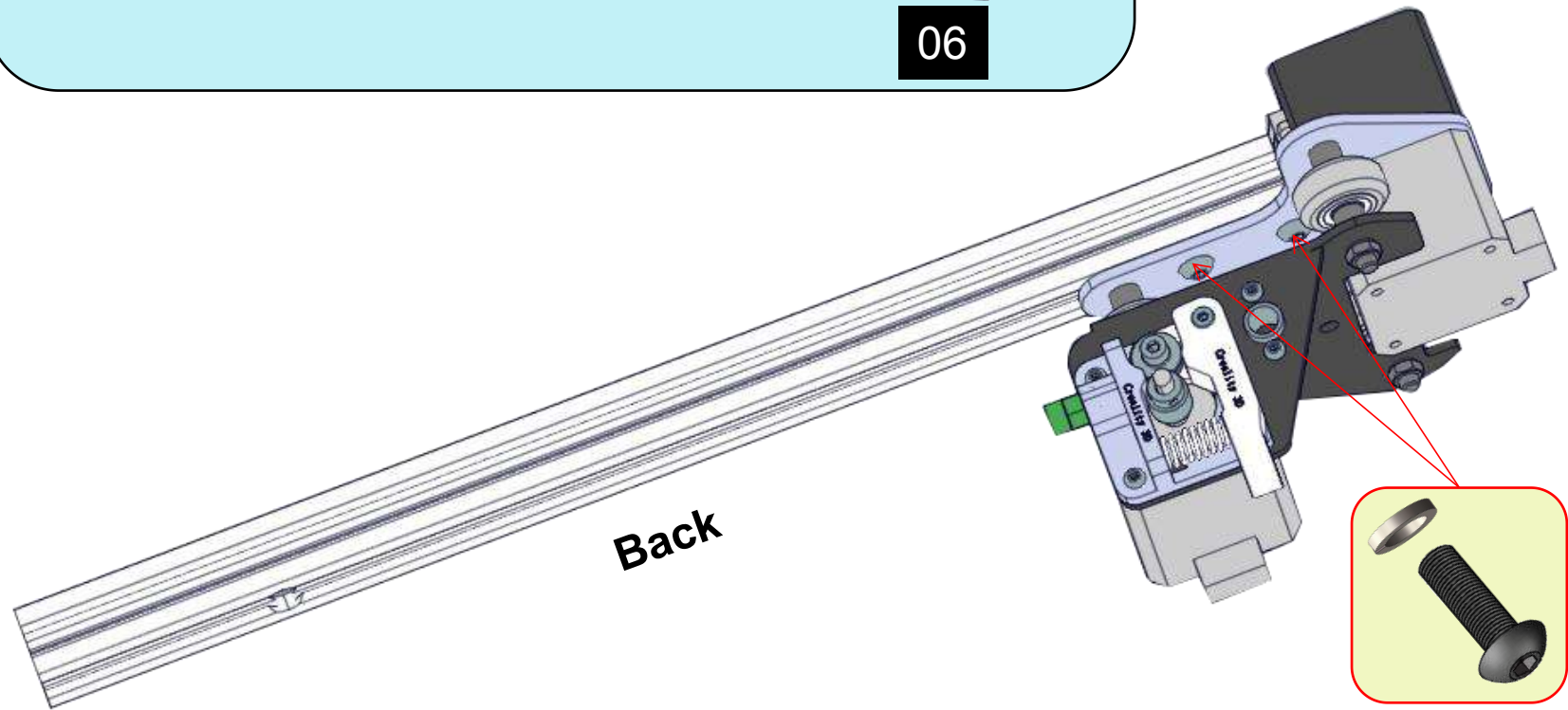
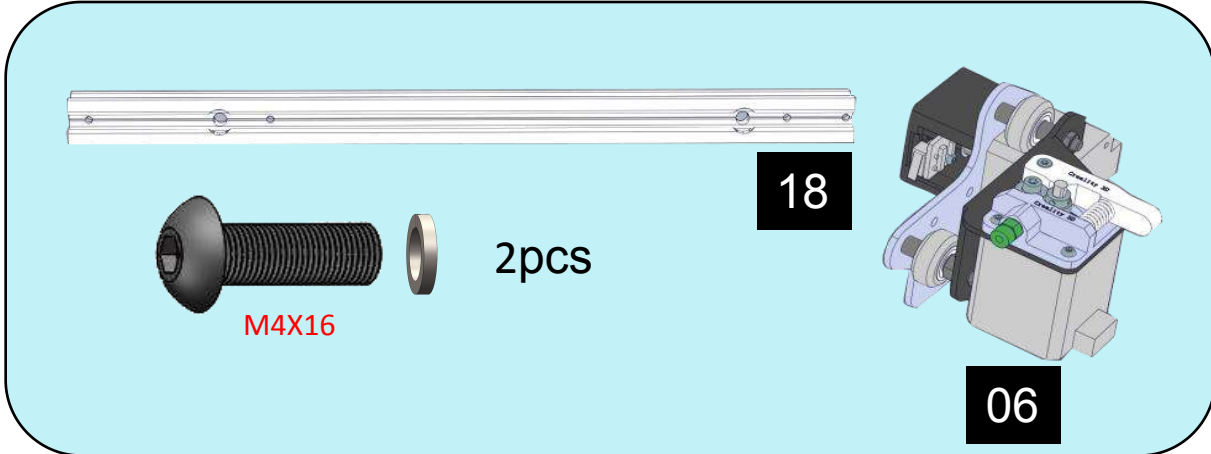


Front

# Step 4

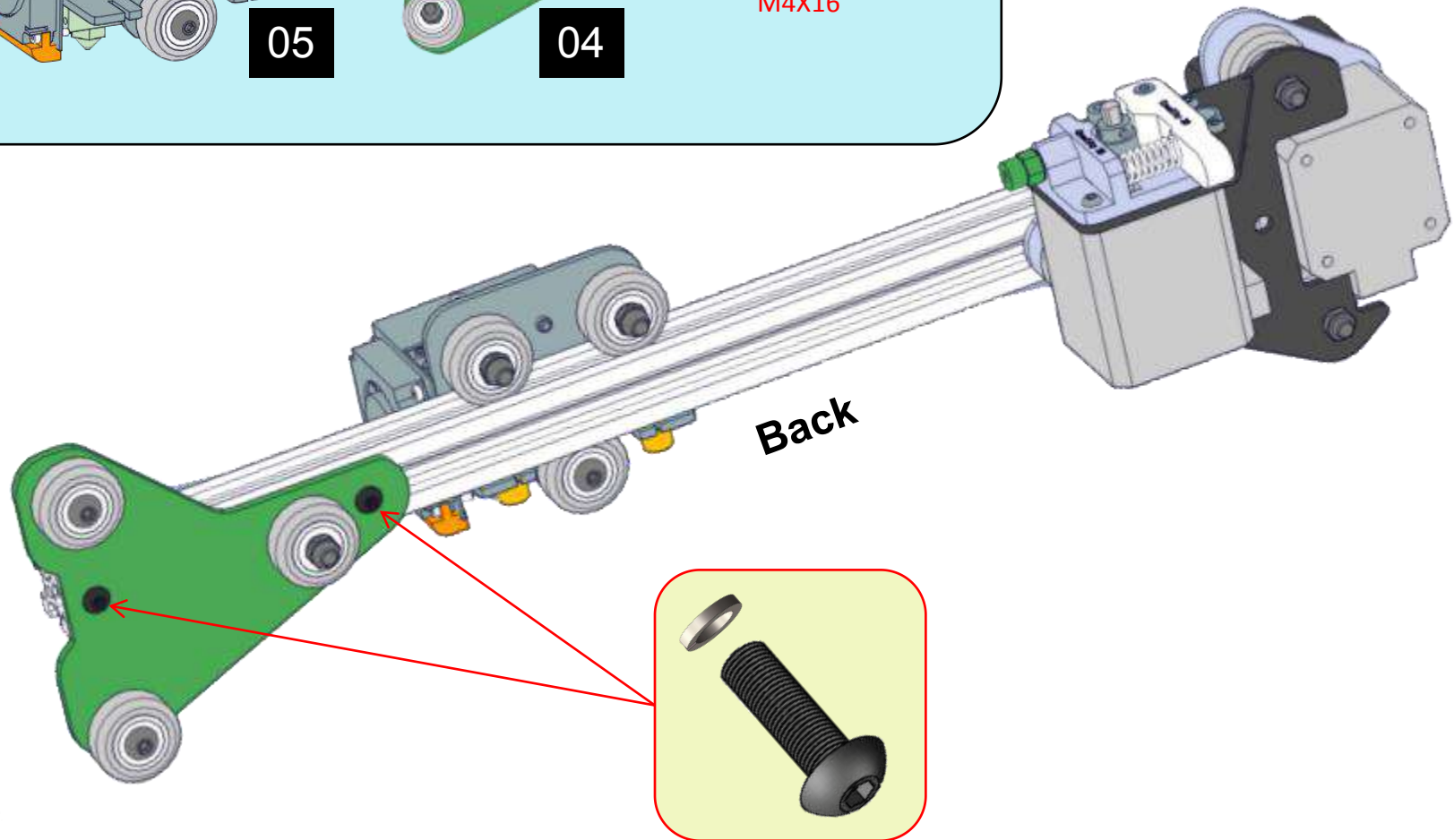
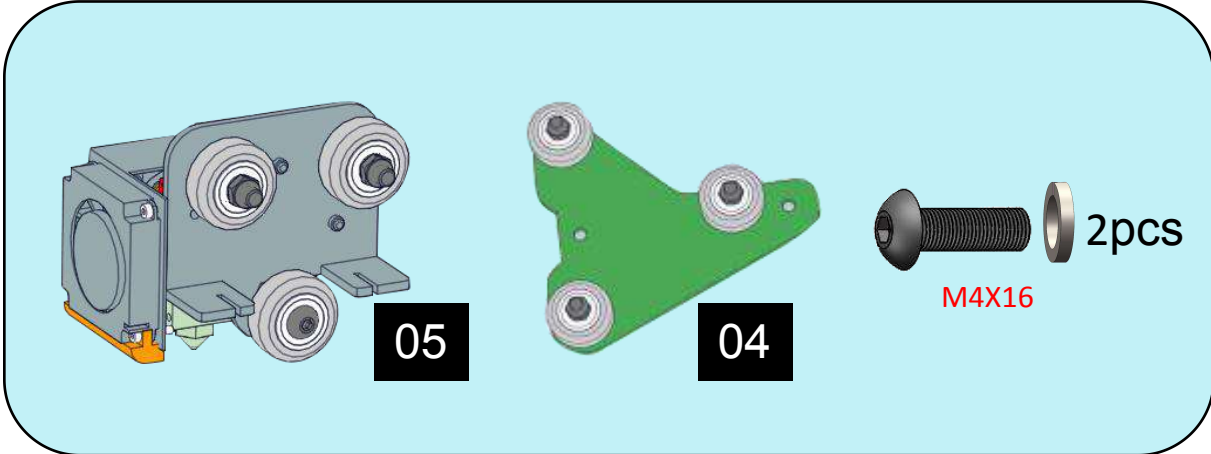


# Step 5

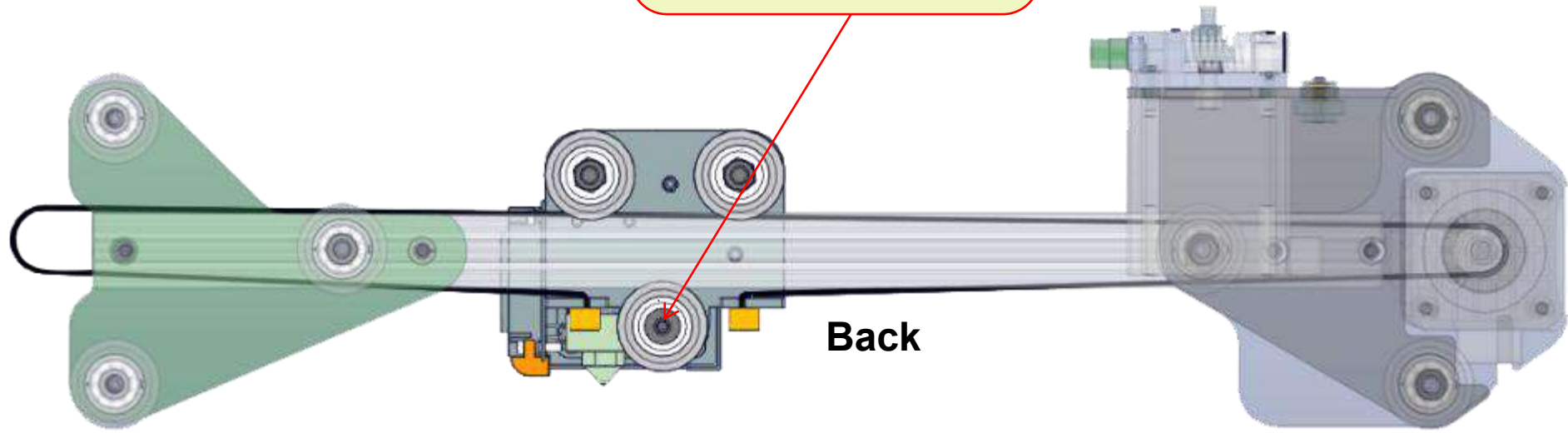
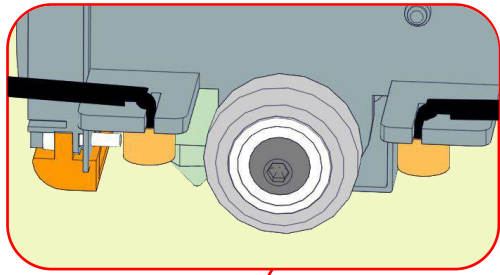
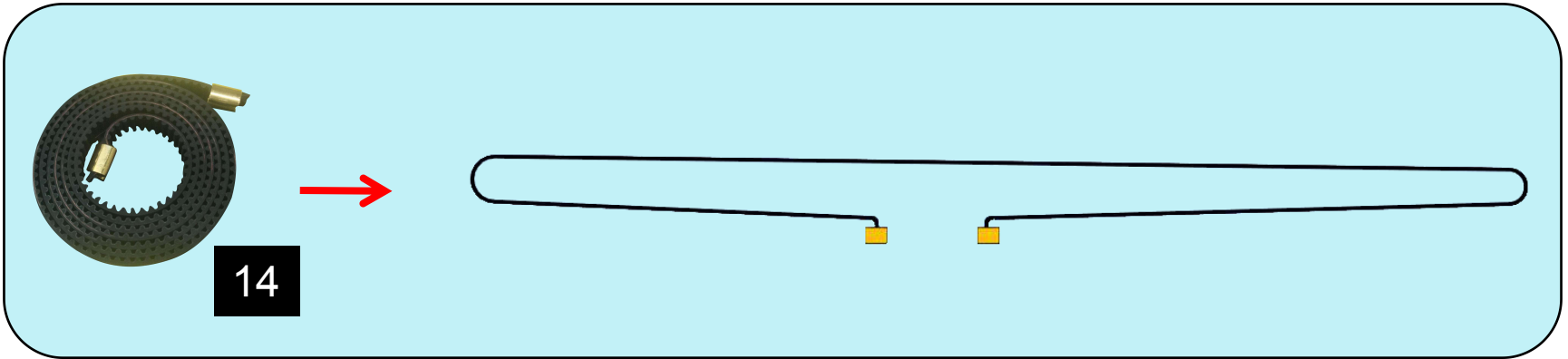




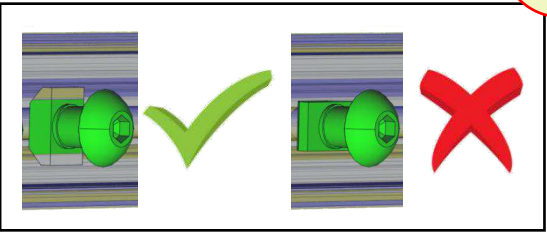
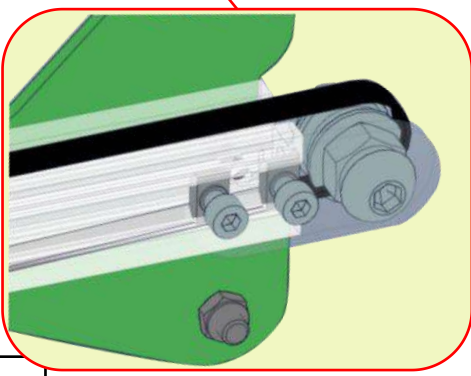
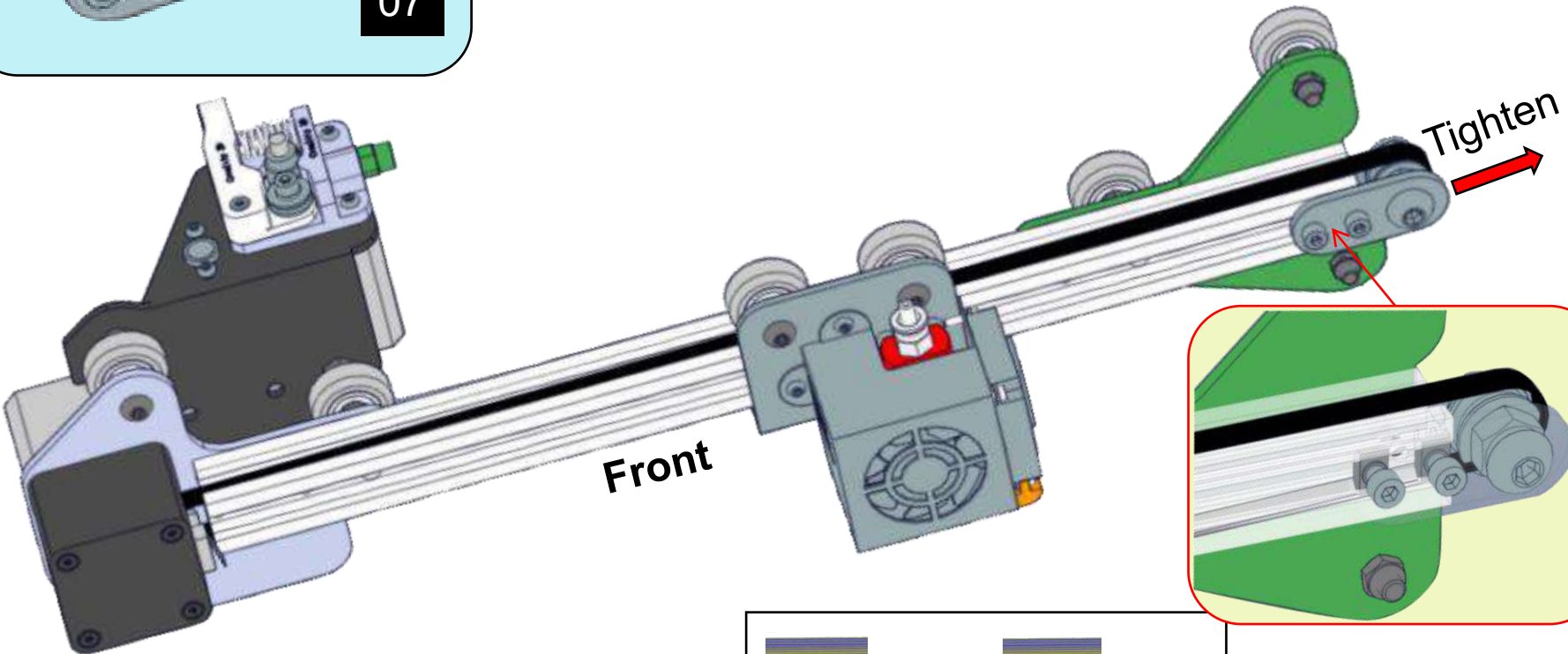
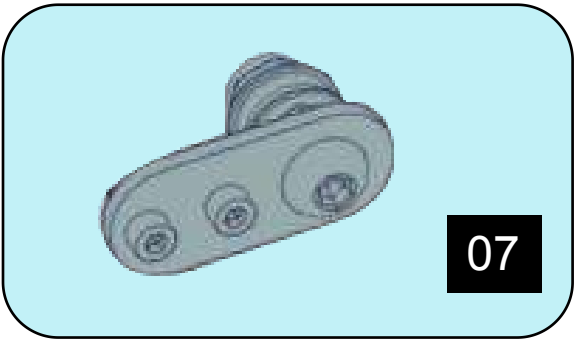
# Step 6



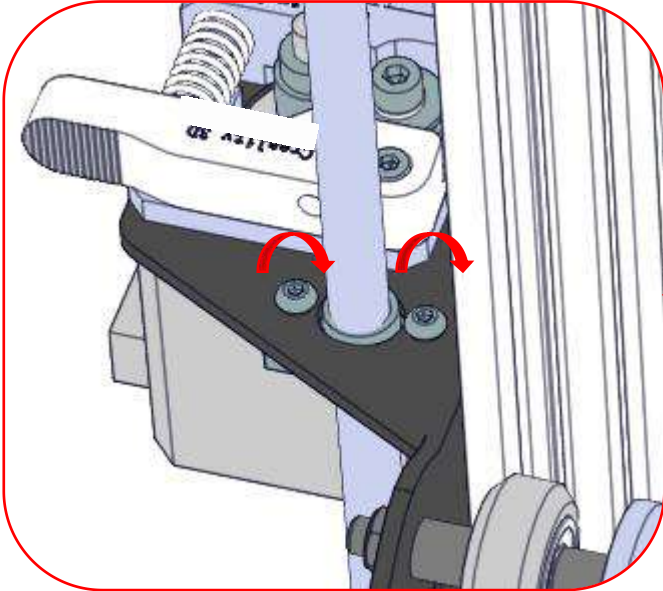
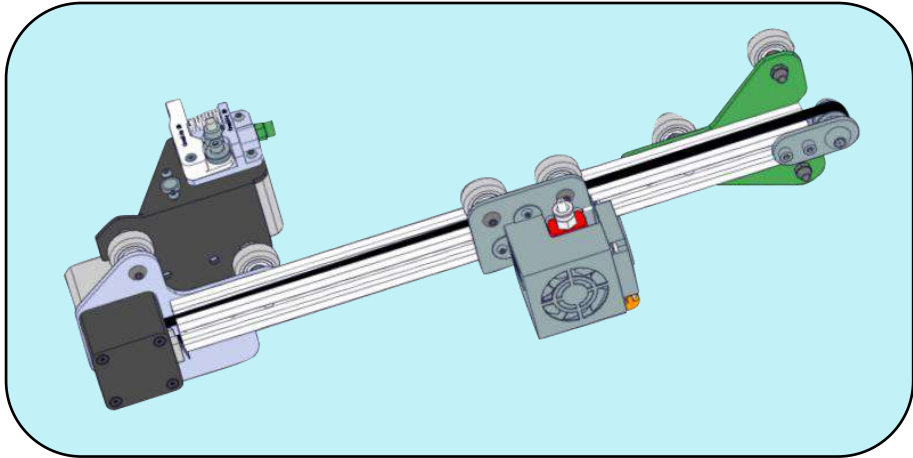
# Step 7



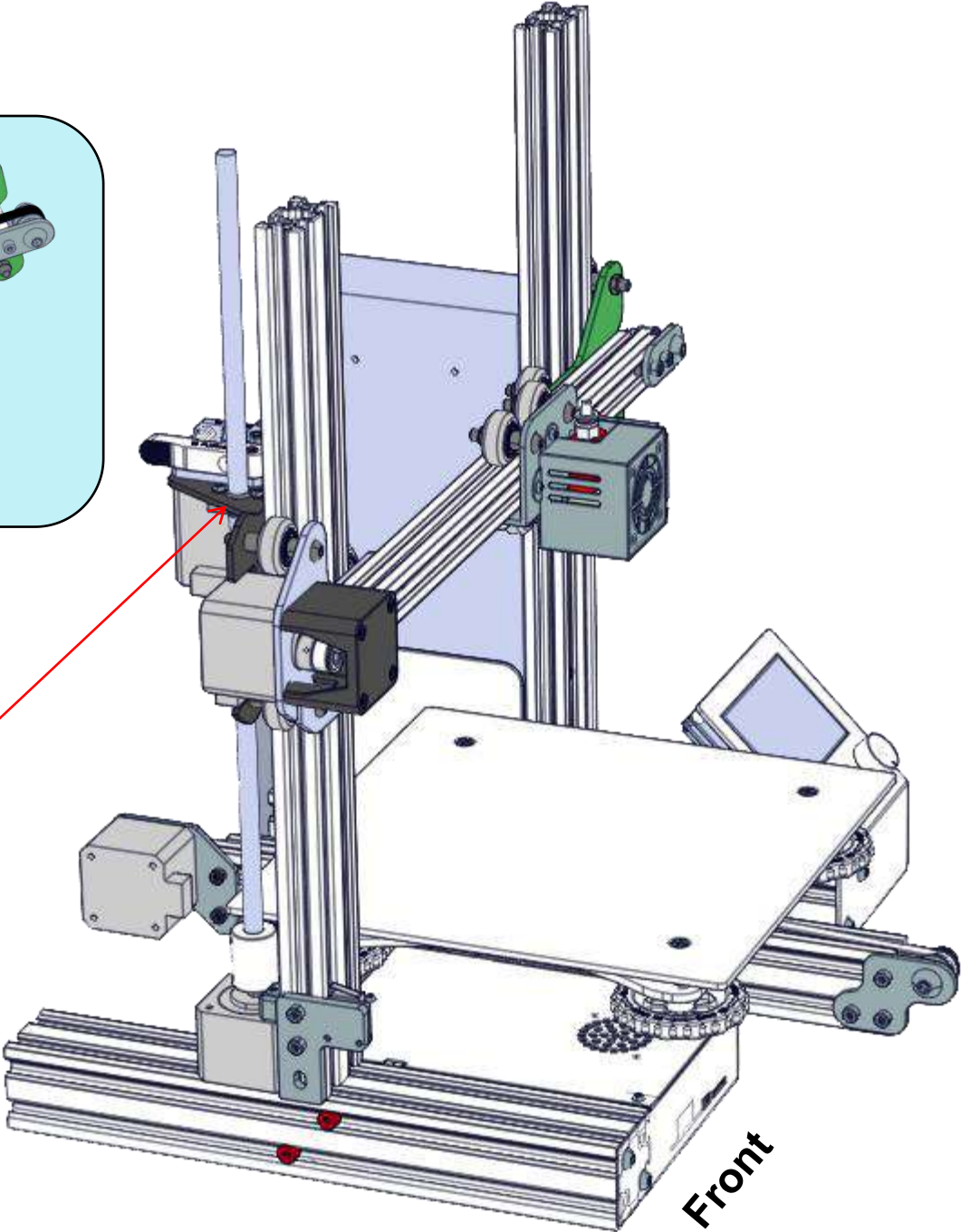
# Step 8



# Step 9



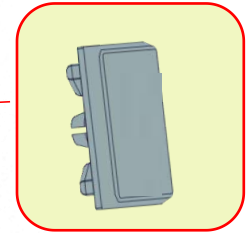
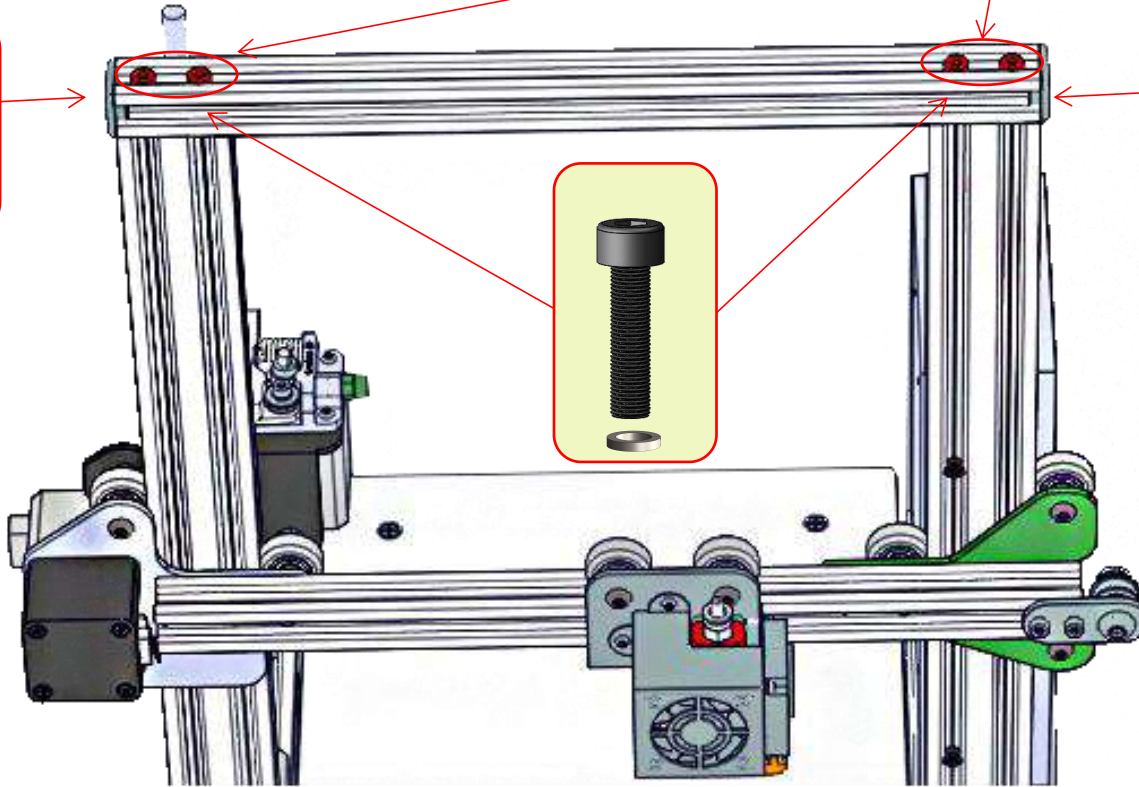
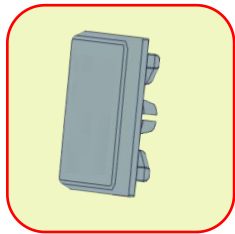
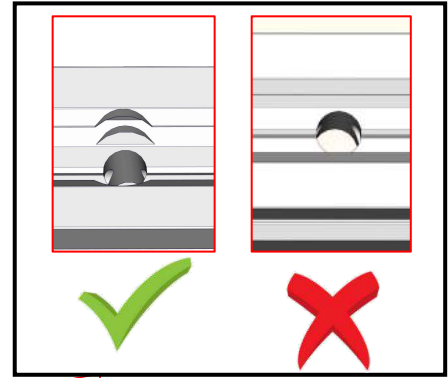
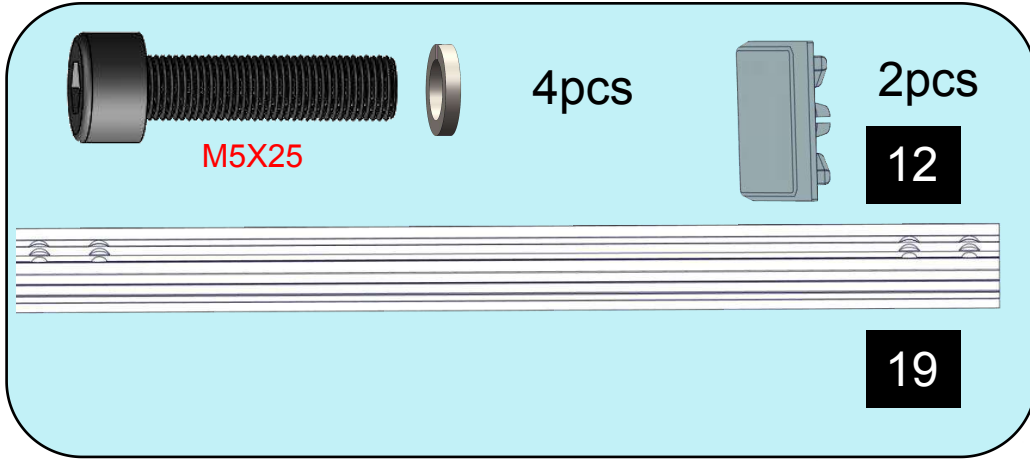
\*Don't tighten it too tight



Front

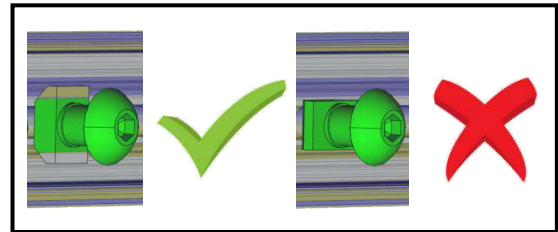
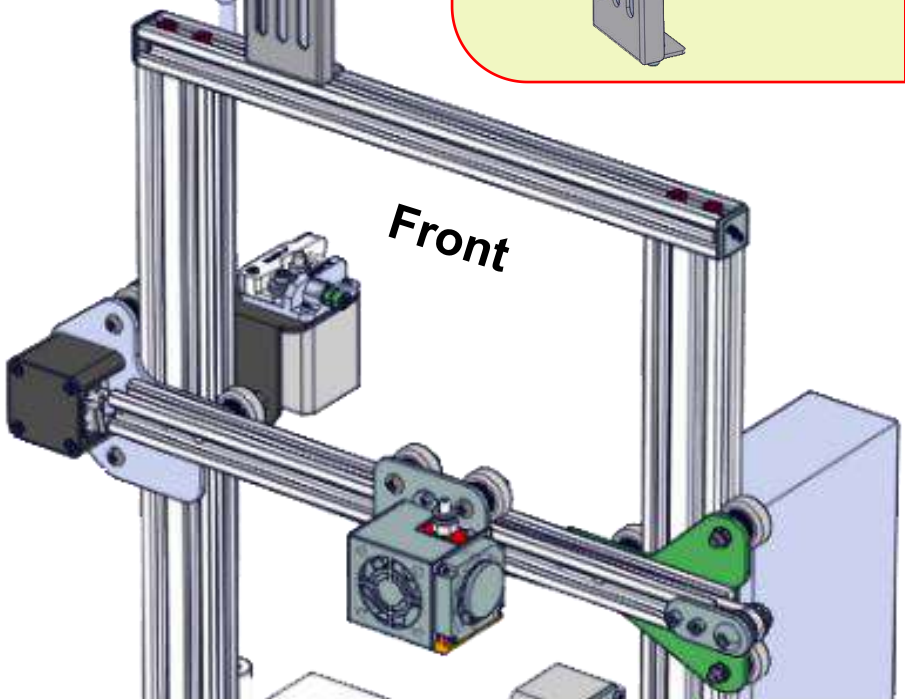
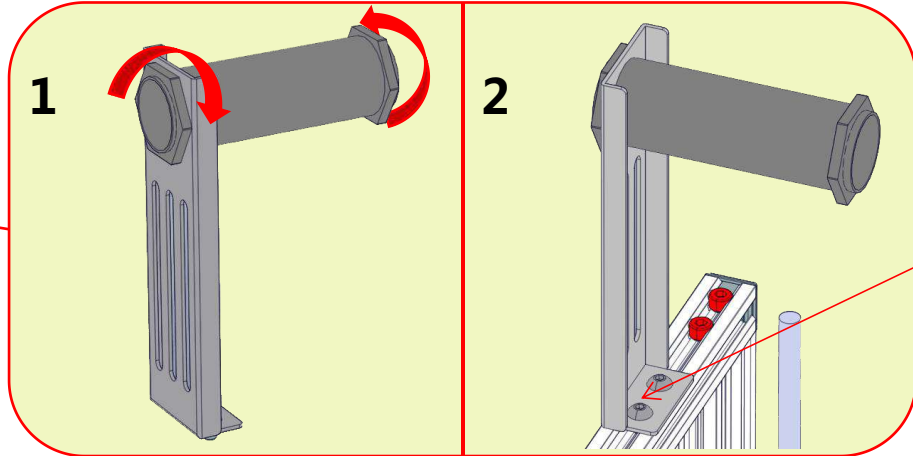
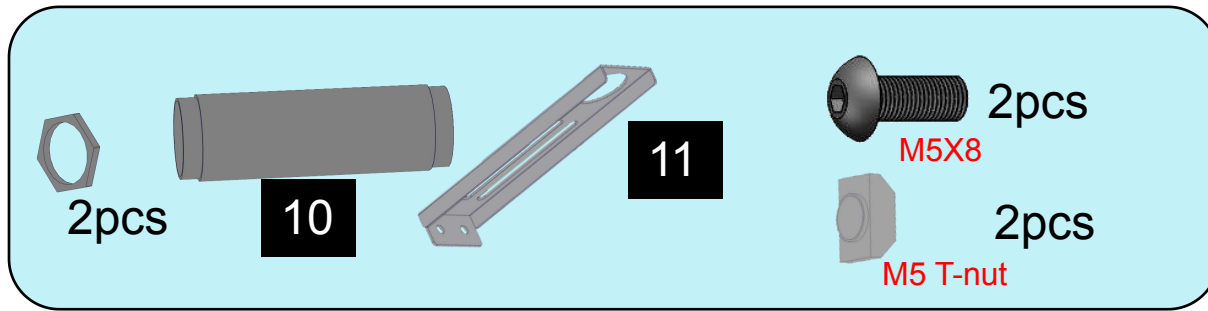


# Step 10

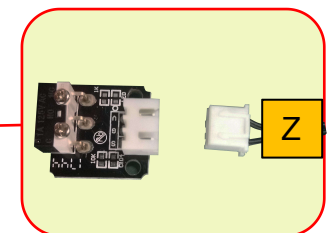
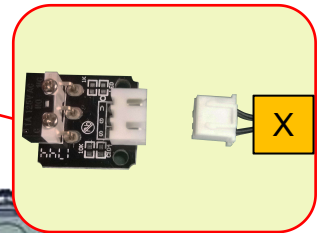
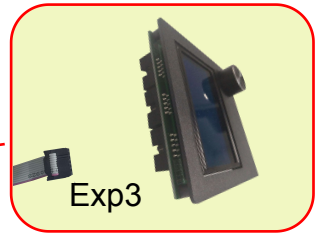
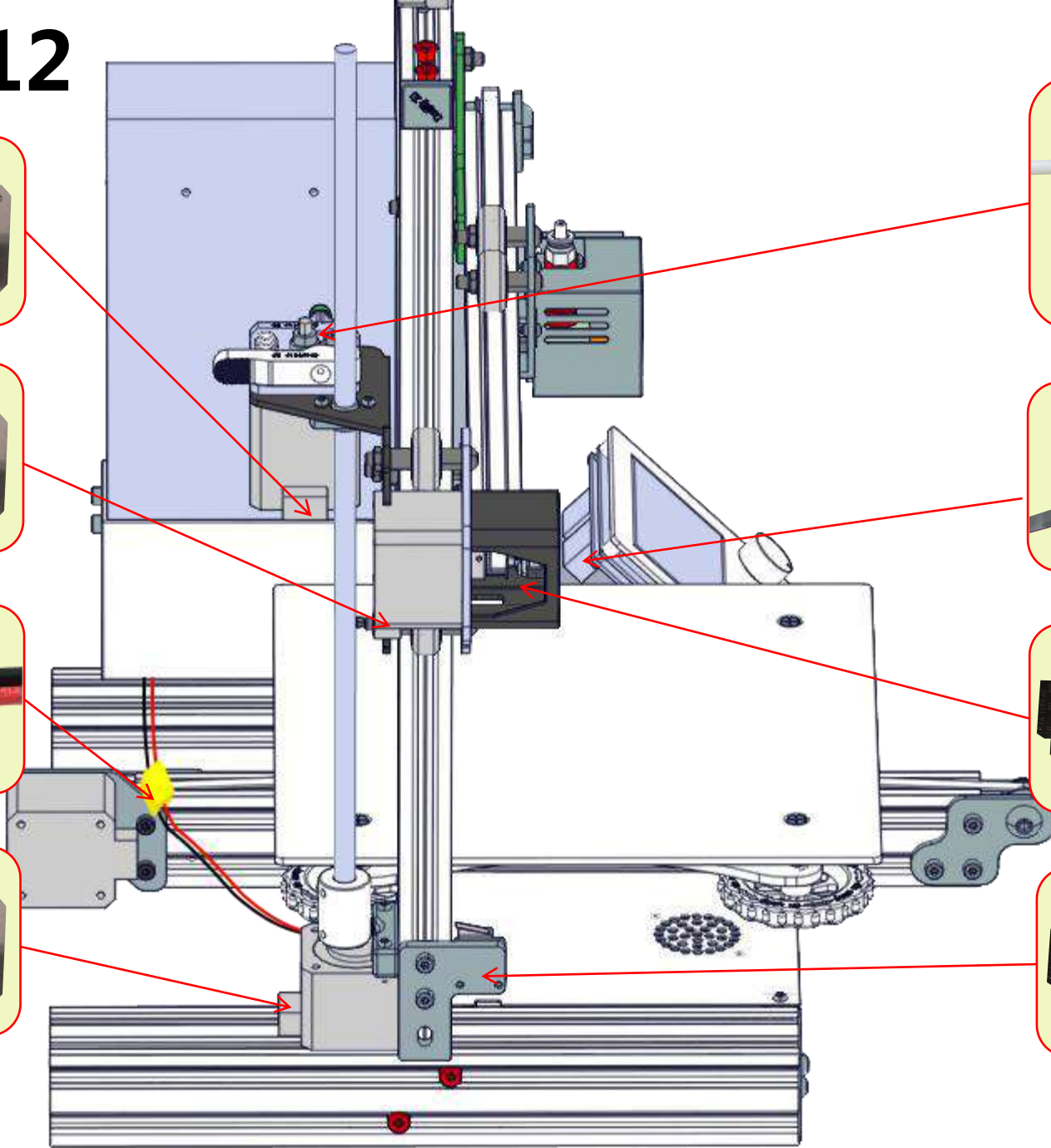
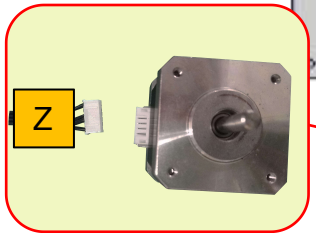
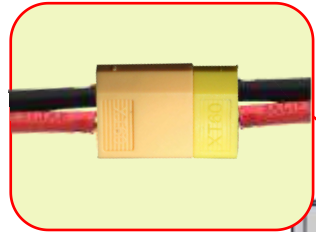
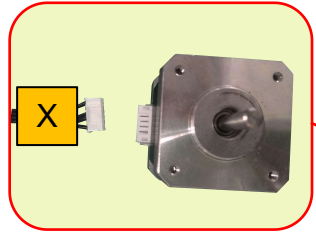
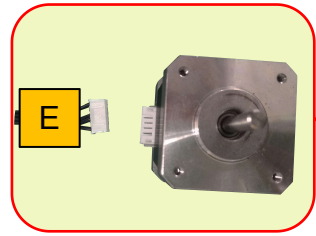




# Step 11



# Step 12



Left



Facebook QR code

## Shenzhen Creality3D Technology CO.,LTD.

After-Sales Service Tel: (+86)400-6133 882

Official Website: [www.creality3d.cn](http://www.creality3d.cn)

Company Address: 12F, Building No.3, Jinchengyuan Industrial Area, Huafan Road, Dalang, Longhua, Shenzhen, Guangdong Province

