



## VDS Series PC Oscilloscopes

### User Manual

[WWW.OWON.COM.HK](http://WWW.OWON.COM.HK)



### Dec. 2013 edition V1.3

Copy Right in this Manual © Lilliput Company. All rights Reserved.

The Lilliput's products are under the protection of the patent rights in America and other countries, including ones which have already obtained the patent rights and those which are applying for. The information in this manual will replace all that in the materials published originally.

The information in this manual was correct at the time of printing. However, OWON will continue to improve products and reserves the rights to changes specification at any time without notice.

OWON is the registered trademark of the Lilliput Company.

**Headquarter: Fujian Lilliput Optoelectronics Technology Co.,Ltd.:** The mansion of optoelectronics, 19 Heming Road, Lantian industrial zone, Zhangzhou, Fujian, China

**Tel:**+86-596-2130430

**Fax:**+86-596-2109272

**Web:** [www.owon.com.hk](http://www.owon.com.hk)

**Mail:** Business Consulting: [info@owon.com.hk](mailto:info@owon.com.hk)

Sale service: [service@owon.com.hk](mailto:service@owon.com.hk)

**Branch: Xiamen Lilliput Technology Co.,Ltd.:** the 5th floor, B Area, Chuangxin Mansion, Software Park, ZhenZhuWan, Huandao RD, Xiamen, Fujian, China

**Tel:**+86-592-2575666

**Fax:**+86-592-2575669

## General Warranty

Lilliput warrants that the product will be free from defects in materials and workmanship for a period of 3 years from the date of purchase of the product by the original purchaser from the Lilliput Company. And the warranty period of accessories such as probe is 12 month. This warranty only applies to the original purchaser and is not transferable to the third party. If the product proves defective during the warranty period, Lilliput either will repair the defective product without charge for parts and labor, or will provide a replacement in exchange for the defective product. Parts, modules and replacement products used by Lilliput for warranty work may be new or reconditioned to like new performance. All replaced parts, modules and products become the property of Lilliput.

In order to obtain service under this warranty, Customer must notify Lilliput of the defect before the expiration of the warranty period. Customer shall be responsible for packaging and shipping the defective product to the service center designated by Lilliput, and with a copy of customer proof of purchase.

This warranty shall not apply to any defect, failure or damage caused by improper use or improper or inadequate maintenance and care. Lilliput shall not be obligated to furnish service under this warranty a) to repair damage resulting from attempts by personnel other than Lilliput representatives to install, repair or service the product; b) to repair damage resulting from improper use or connection to incompatible equipment; c) to repair any damage or malfunction caused by the use of non-Lilliput supplies; or d) to service a product that has been modified or integrated with other products when the effect of such modification or integration increases the time or difficulty of servicing the product.

Please contact the nearest Lilliput's Sales and Service Offices for services or a complete copy of the warranty statement.

For better after-sales service, please visit [www.owon.com.hk](http://www.owon.com.hk) and register the purchased product online.

**Excepting the after-sales services provided in this summary or the applicable warranty statements, Lilliput will not offer any guarantee for maintenance definitely declared or hinted, including but not limited to the implied guarantee for marketability and special-purpose acceptability. Lilliput should not take any responsibilities for any indirect, special or consequent damages.**



# Table of Contents

Table of Contents.....	4
VDS Oscilloscope Software Help.....	1
VDS1022(I)/ VDS2052(I).....	1
VDS2062/VDS3102.....	2
VDS2064/VDS3104.....	2
I. PC Software USB Driver Install Guide.....	3
For Windows Vista or Windows 7.....	3
For Windows XP or Windows 2000.....	7
II. User Interface.....	10
III. Operations Instruction.....	11
1.How to Set the Probe Attenuation Coefficient.....	11
2.How to Set the Vertical System.....	12
3.How to Set the Horizontal System.....	12
4.How to Set the Trigger System.....	13
5.How to Set the Channels.....	15
6.How to Measure Automatically.....	15
7.How to Implement Sampling Setup.....	17
8.How to Measure with Cursors.....	17
9.How to Set the Display System.....	19
10.Use Mathematical Manipulation Function.....	21
11.How to zoom the waveform.....	23
12.How to do Pass/Fail test.....	25
13.How to Record and Play a Waveform.....	26
14.How to Implement the Utility setting.....	27
15.How to Use Executive Buttons.....	28
16.Use LAN Port.....	29
IV. Technical Specifications.....	32



# VDS Oscilloscope Software Help

Welcome to VDS Oscilloscope software.

The supplied accessories of the oscilloscope include a Quick Guide. The Quick Guide of the oscilloscope and the following helps are for your reference.

## Minimum PC Requirements

Processor: Pentium(R) 4 2.4 GHz  
Memory: 1GB  
Disk space: 1GB minimum

## Recommended PC Requirements

Processor: Pentium(R) Dual-Core 2.4 GHz  
Memory: 2GB  
Disk space: 1GB minimum

## Other Requirements

Operating system: Windows XP(32-bit & 64-bit), Windows Vista(32-bit & 64-bit), Windows 7(32-bit & 64-bit)  
Ports: USB2.0、USB1.1  
Display Resolution: 1024 x 768

## Ports Introduction

VDS1022(I)/ VDS2052(I)

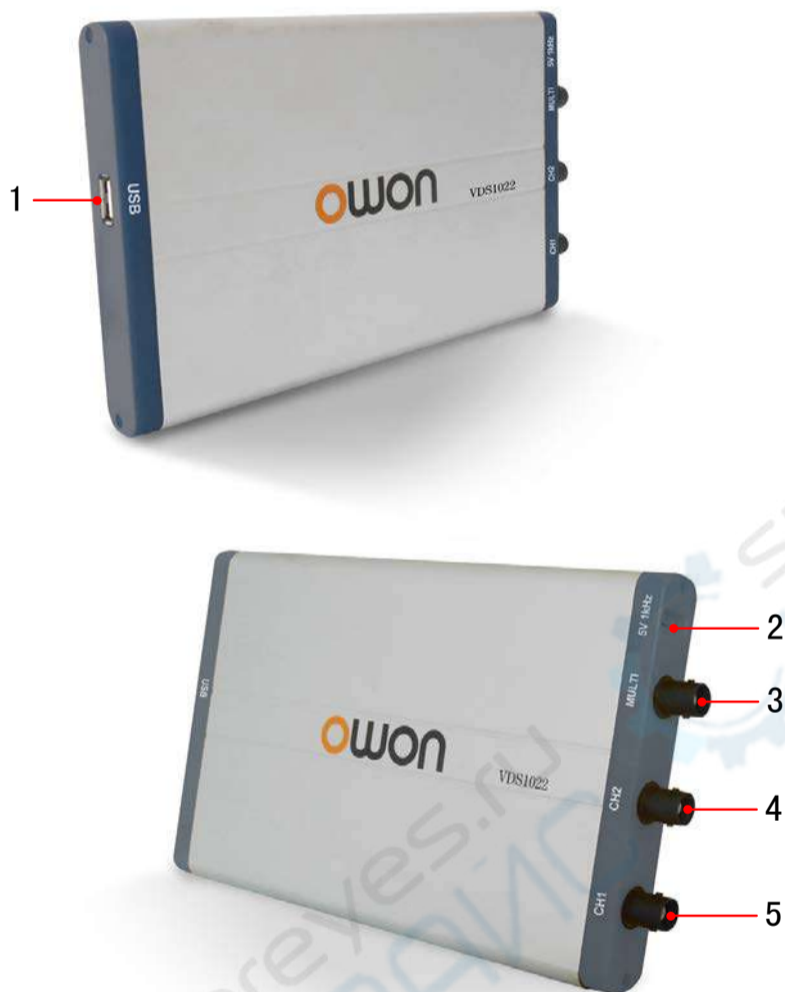


Figure Ports of the Oscilloscope(take VDS1022 for instance)

1. USB port: Supply power by PC USB or the adapter; communicate with PC
2. Probe Compensation: Measurement signal (5V/1KHz) output
3. MULTI port: EXT trigger input, trigger output or Pass/Fail output
4. Signal input of Channel 2
5. Signal input of Channel 1

**Note:** VDS1022(I) represents two types of machines, they are VDS1022I and VDS1022. VDS1022I contains isolation, while VDS1022 does not contain isolation. The same as VDS2052(I).

## VDS2062/VDS3102



Figure: Ports of the Oscilloscope (take VDS3102 for instance)

1. RS-232C Port (optional)
2. USB port: Supply power by PC USB or the adapter; communicate with PC
3. LAN port (optional): Network port which can be used to connect with PC
4. Probe Compensation: Measurement signal (3.3V/1KHz) output
5. EXT trigger input, trigger output or Pass/Fail output
6. Signal input of Channel 2
7. Signal input of Channel 1

## VDS2064/VDS3104



Figure: Ports of the Oscilloscope (take VDS3104 for instance)

1. Probe Compensation: Measurement signal (3.3V/1KHz) output
2. MULTI port: EXT trigger input, trigger output or Pass/Fail output
3. LAN port (optional): Network port which can be used to connect with PC
4. USB port: Supply power by PC USB or the adapter; communicate with PC
5. Signal input of Channel 4
6. Signal input of Channel 3
7. Signal input of Channel 2
8. Signal input of Channel 1

**Note:** If you use LAN port to communicate with PC, the oscilloscope should be powered by the adapter.

## I. PC Software USB Driver Install Guide

Use the supplied USB cable to connect the oscilloscope with a PC through their USB ports.

**Note:** If you use a USB cable that is not supplied by us, some problems such as connection error and signal disturbing might occur.

### For Windows Vista or Windows 7

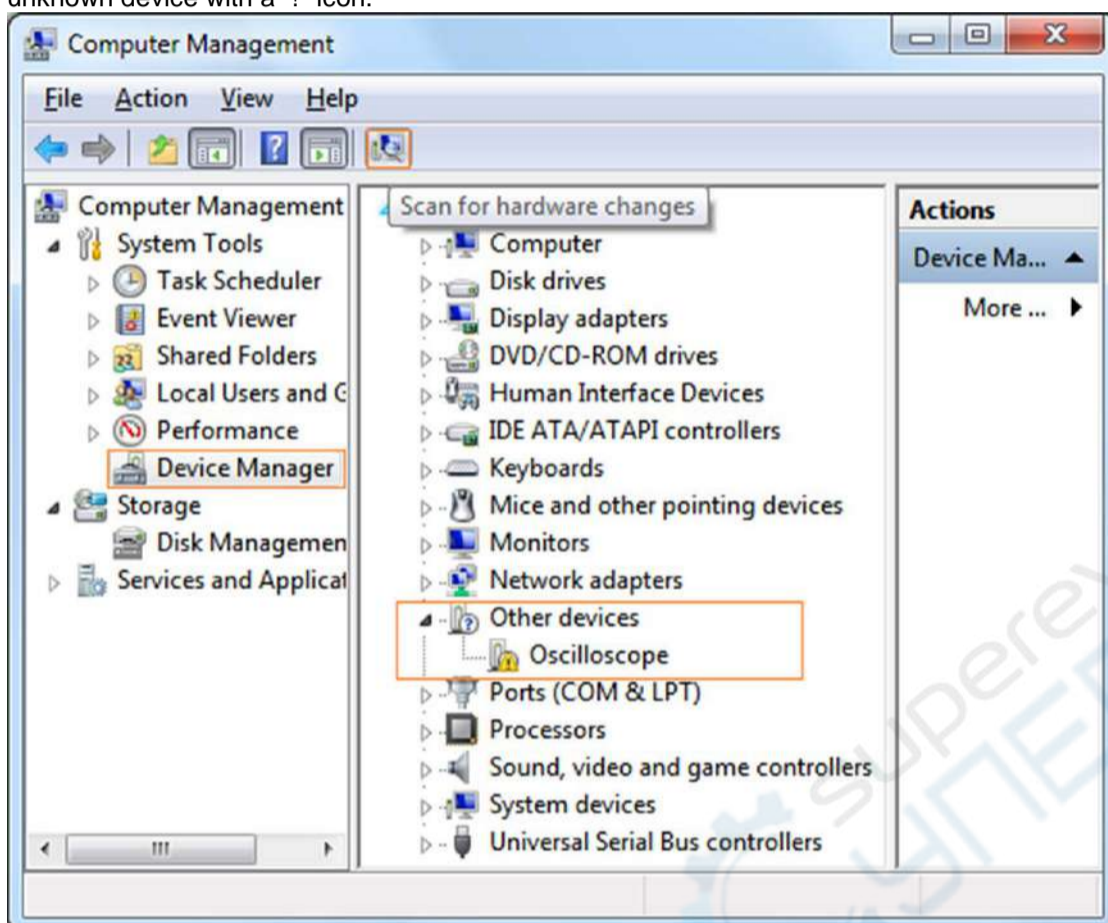
The Microsoft Windows Systems since Windows Vista or Windows 7, change a lot, which require a new installation guide of USB driver. Here it is.

During the whole installation, please assure that the device is running well and plugged into PC from USB.

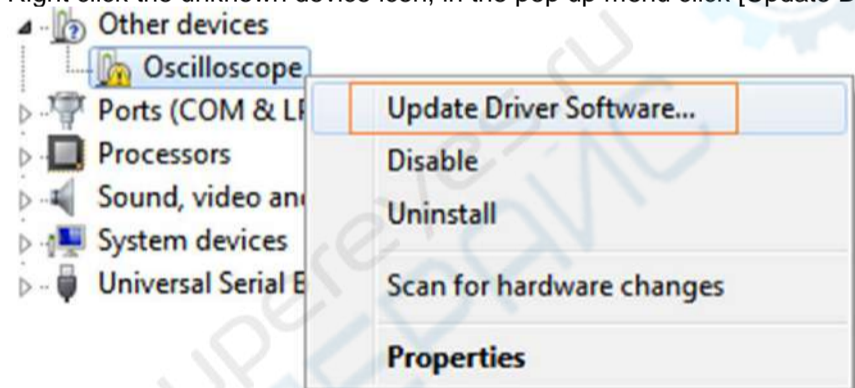
Right click [Computer], you can find it on the desktop, or in [Start] menu.



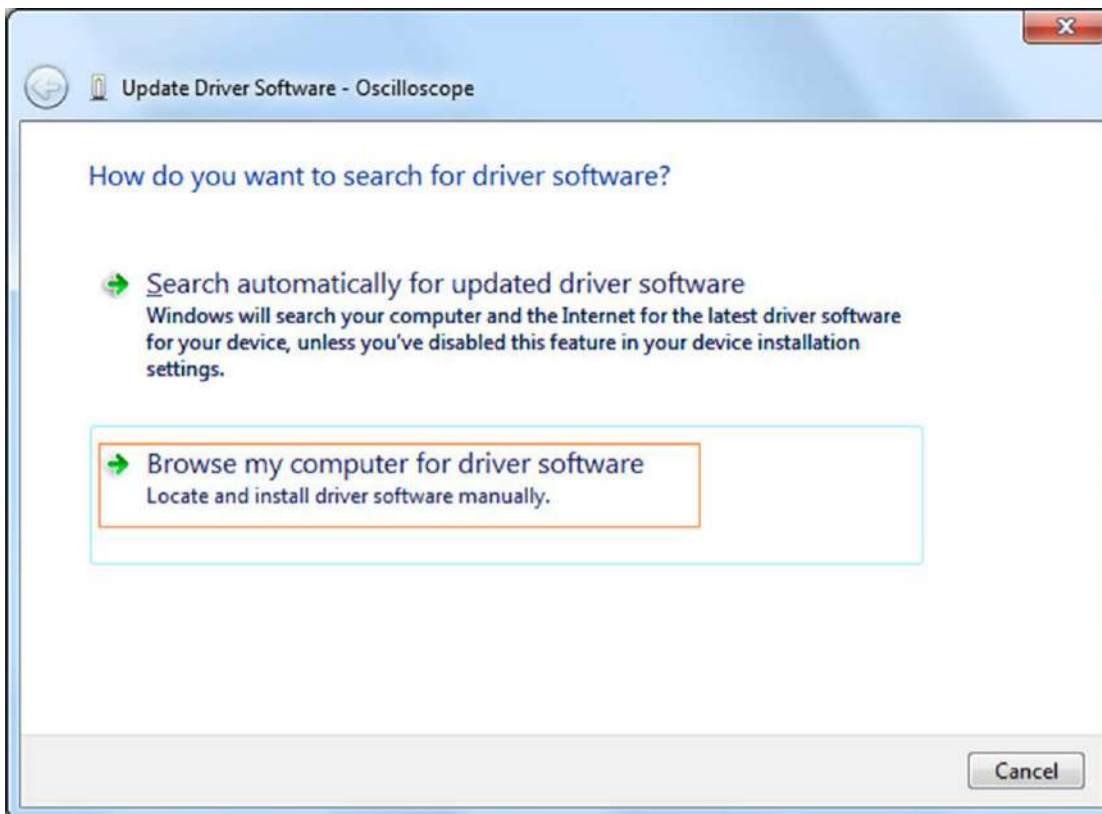
in the pop up menu, click [Manage] and it will open a window named "Computer Management", as follow, in the left side click [Device Manager], it will show a devices tree in the middle, and then click the last one button "Scan for hardware changes" in tool bar as follow, and if the device is running well and plugged into PC, computer will detect an unknown device with a "!" icon.



Right click the unknown device icon, in the pop up menu click [Update Driver Software...],



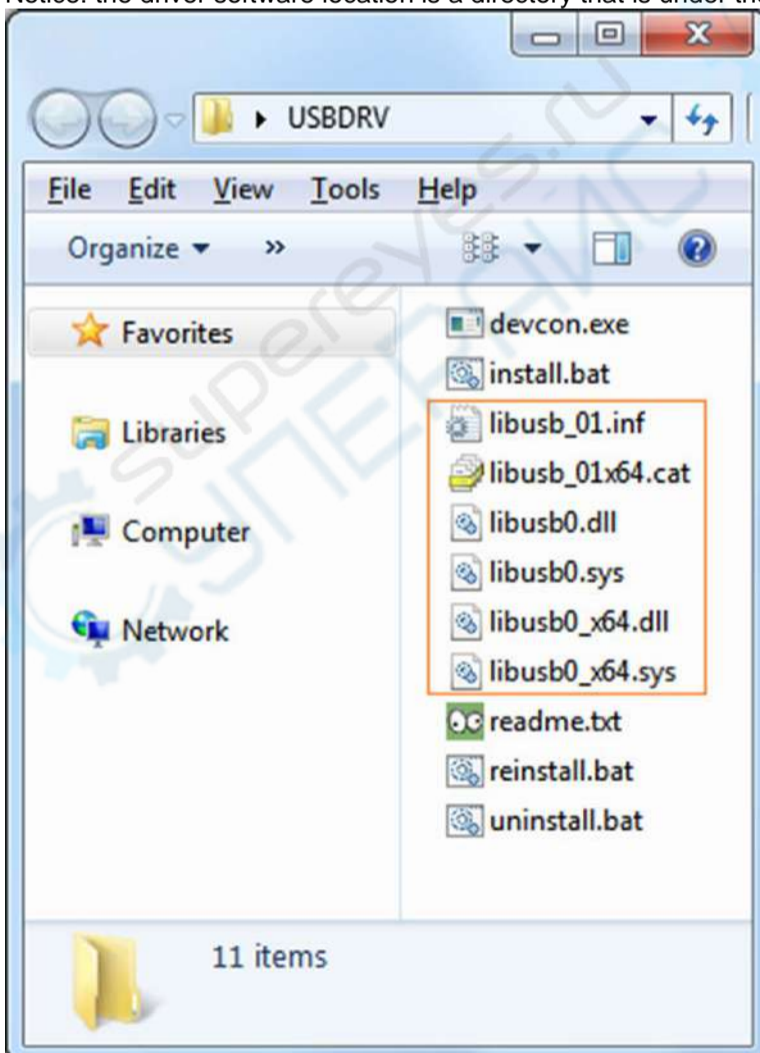
In the open window, select [Browse my computer for driver software],



The next window, select a directory path for the driver software location, and click "Next",

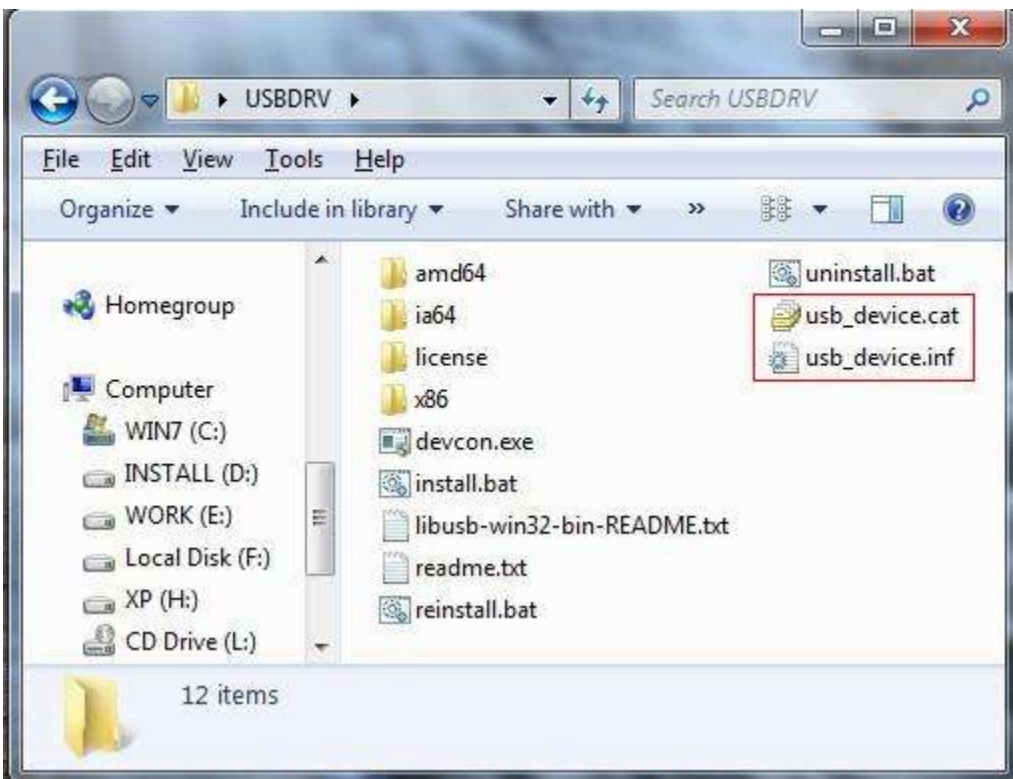


Notice: the driver software location is a directory that is under the software setup folder named "USBDRV", and the contents inside are like these:

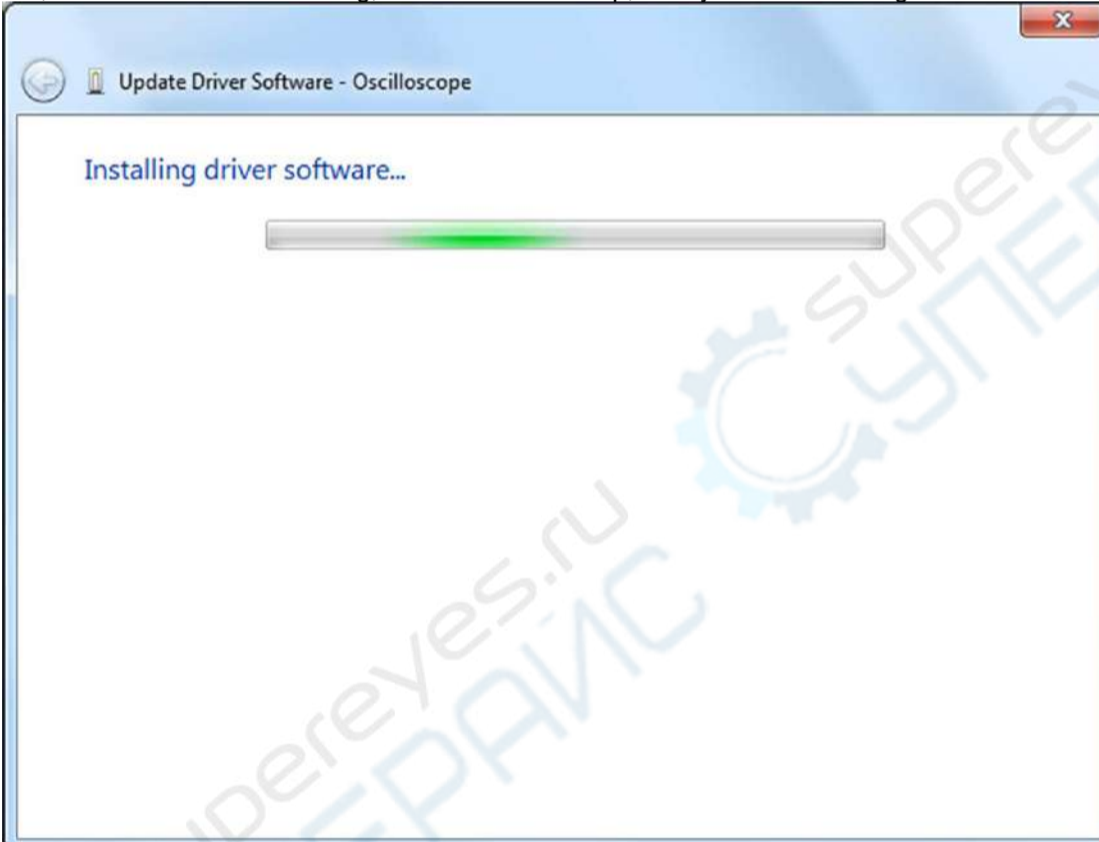


Or like this, than you should use the "USBDRV" directory to indicate the ".inf" file, and to the ".sys" or ".dll" file, you can indicate then in different directories like "x86", "ia64" or "amd64" depending on the CPU, but most of time just x86 and amd64 are enough.



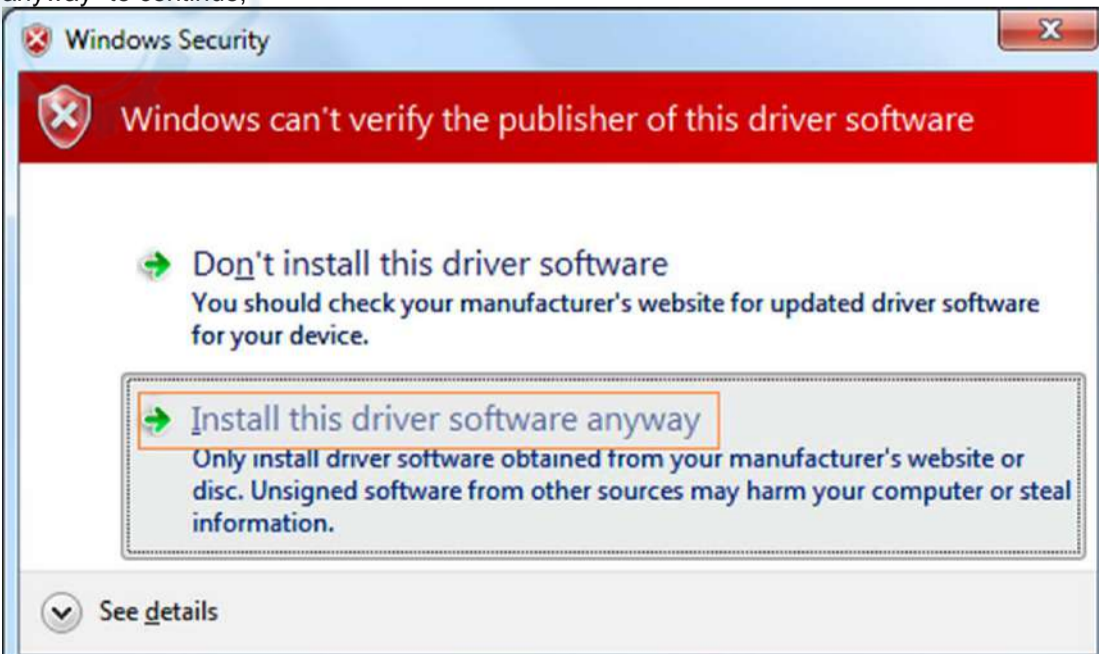


OK, back to the driver installing, after last "Next" step, the system is installing driver software for you, as follow,



In the course,

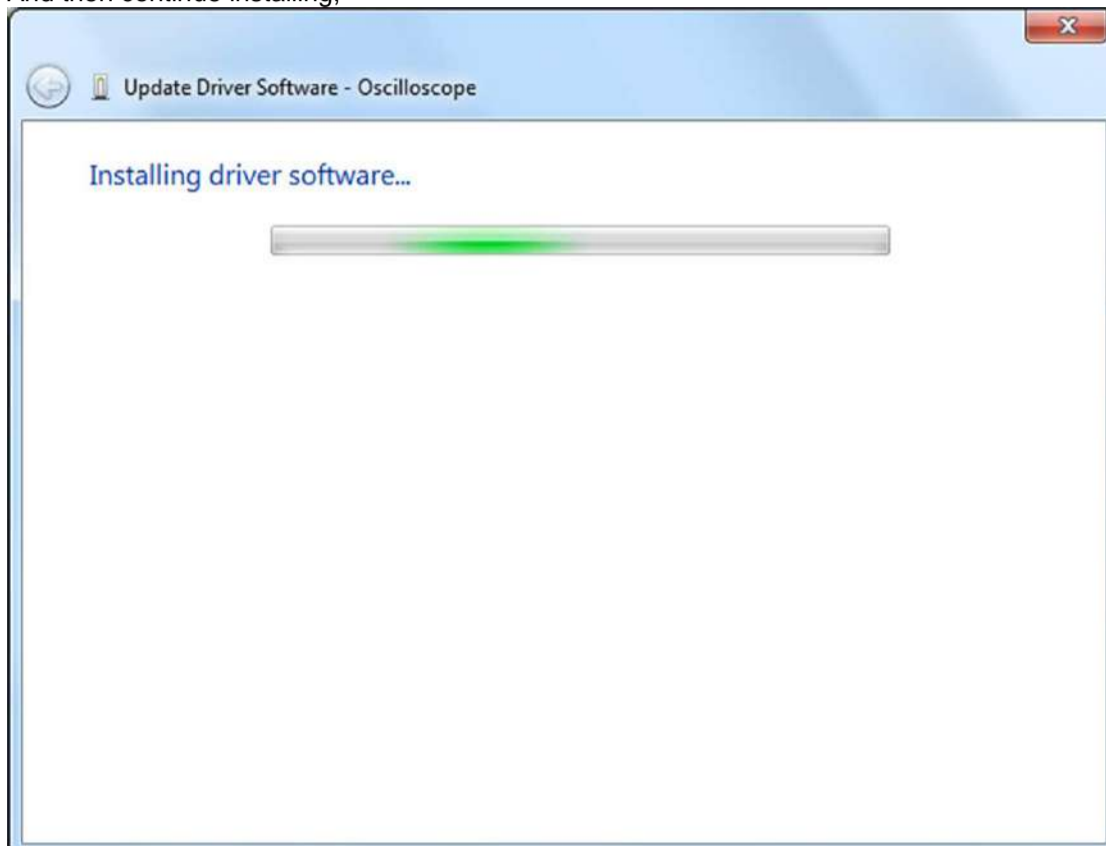
It(for Windows XP x86&x64, Windows Vista x86&x64, Windows 7 x86) may open a window named "Windows Security" as below, and just select "Install this driver software anyway" to continue,



Or sometimes it(for Windows 7 x64) may open a window named "Windows Security" as below, and just click "Install" to continue,

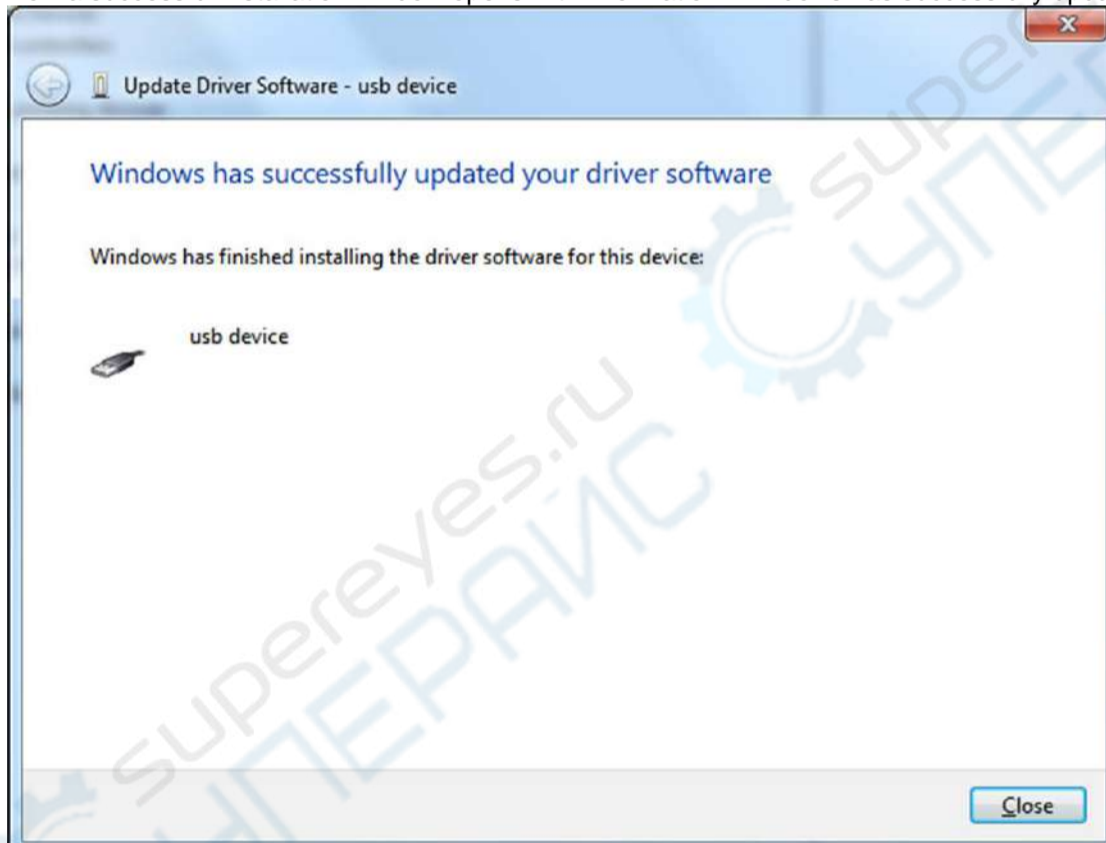


And then continue installing,

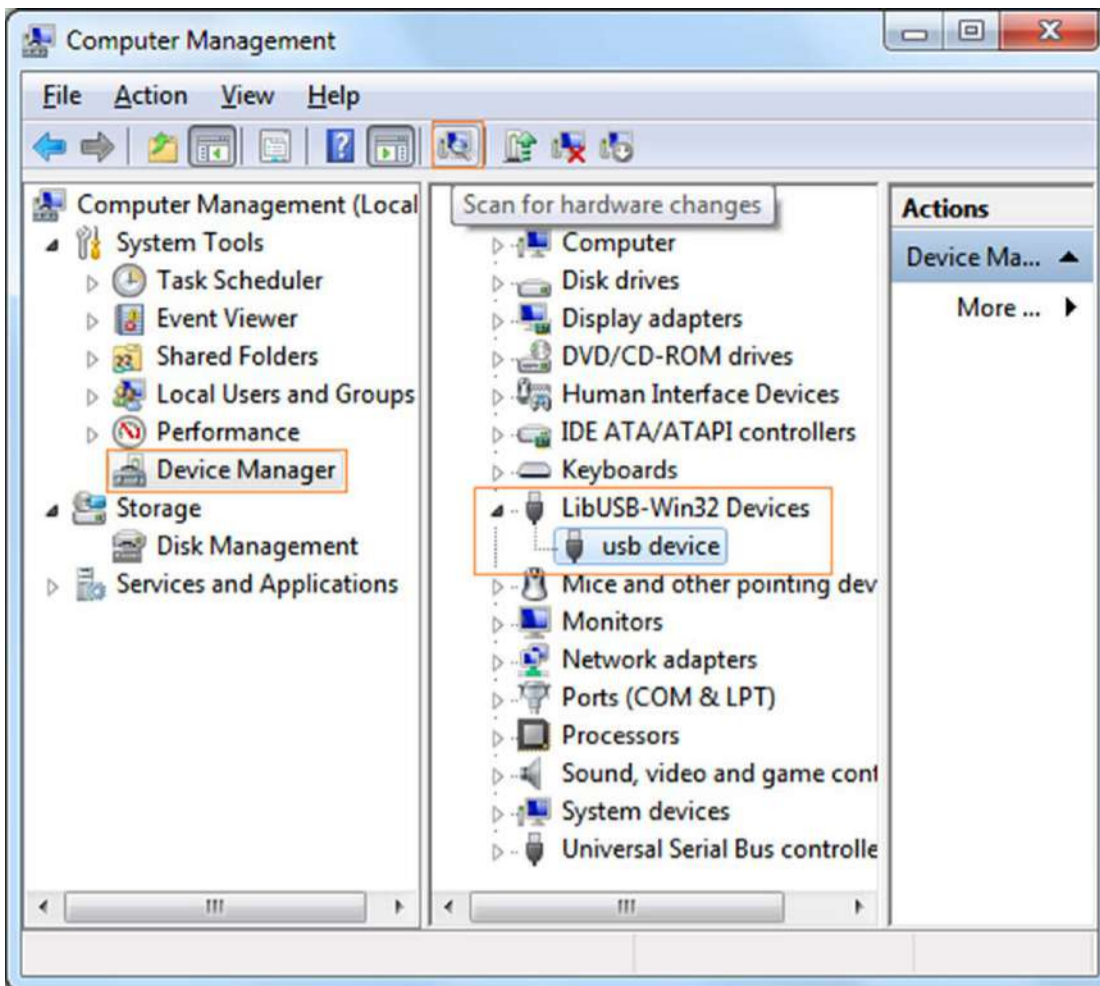


And finish.

Now a successful installation window opens with information "Windows has successfully updated your driver software".



Close the window, have a look at the "Computer Management" window, you will find a device under [LibUSB-Win32 Devices], it should be like this:



Now the USB driver will work.

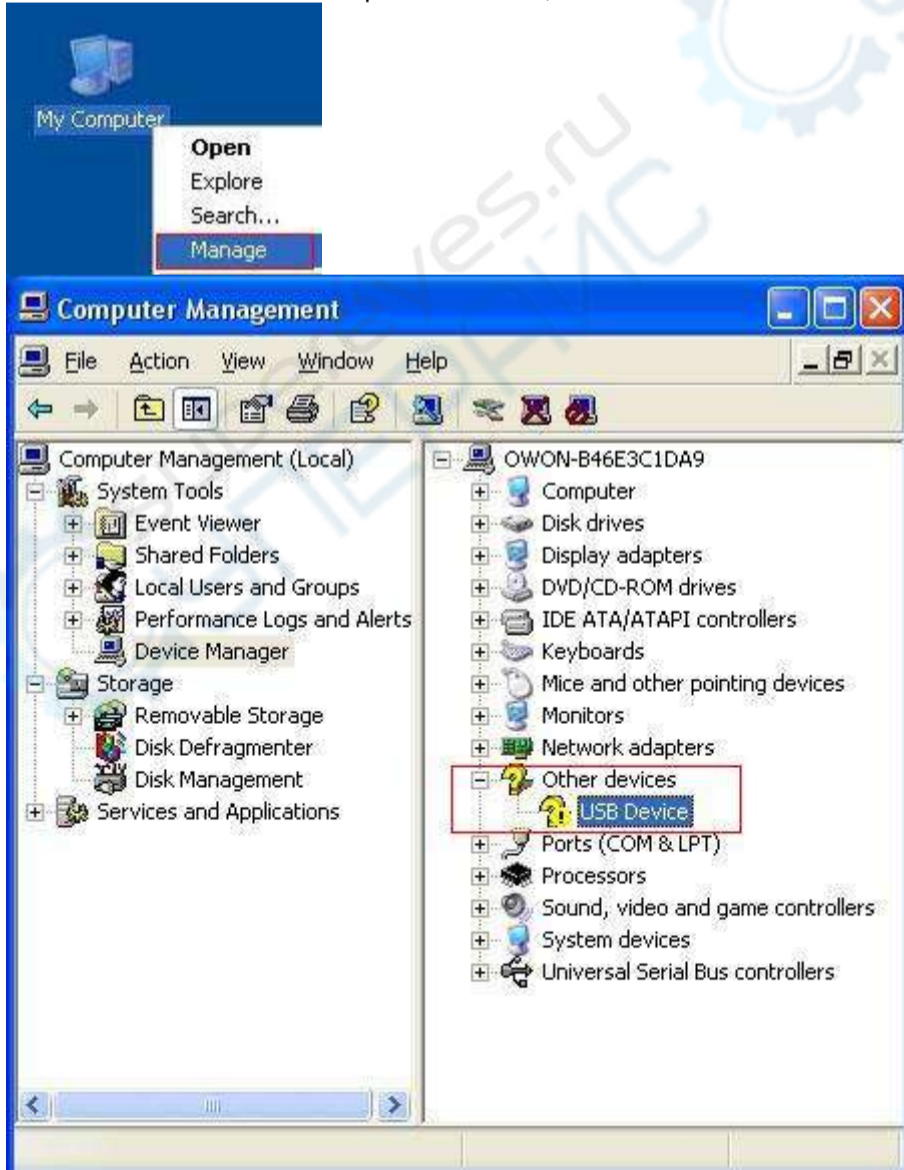
**For Windows XP or Windows 2000**

**For Windows XP or Windows 2000**

Notice: for both x86 and x64.  
 Plug into the running well device to open [Found New Hardware Wizard] dialog.



Or you can right click [My Computer] and select [Manage], in the left area of opened [Computer Management] select [Device Manager] , double click the item [USB Device] with "?" in the middle area to open the Wizard,



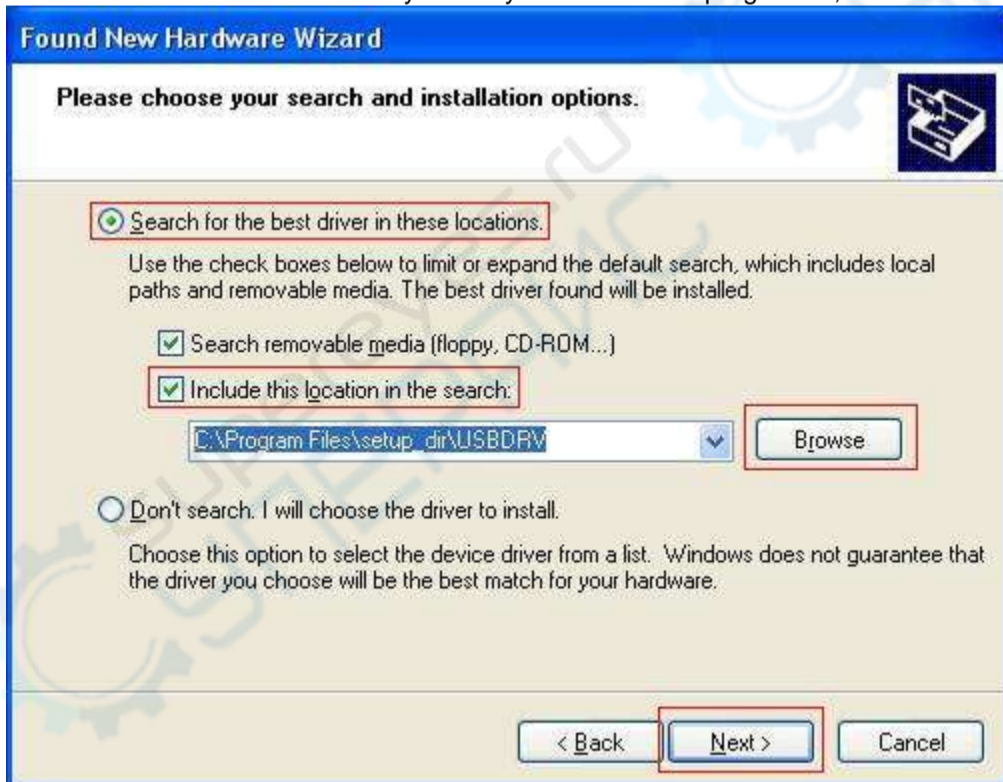
In the Wizard, select [No, not this time] ,



select [Install from a list or specific location(Advanced)] ,



select [Search for the best driver in these locations.] , then select [Include this location in the search] and indicate a directory location for USB driver which is named as "USBDRV" and under the directory where you installed the program at,



Then the installation is running,



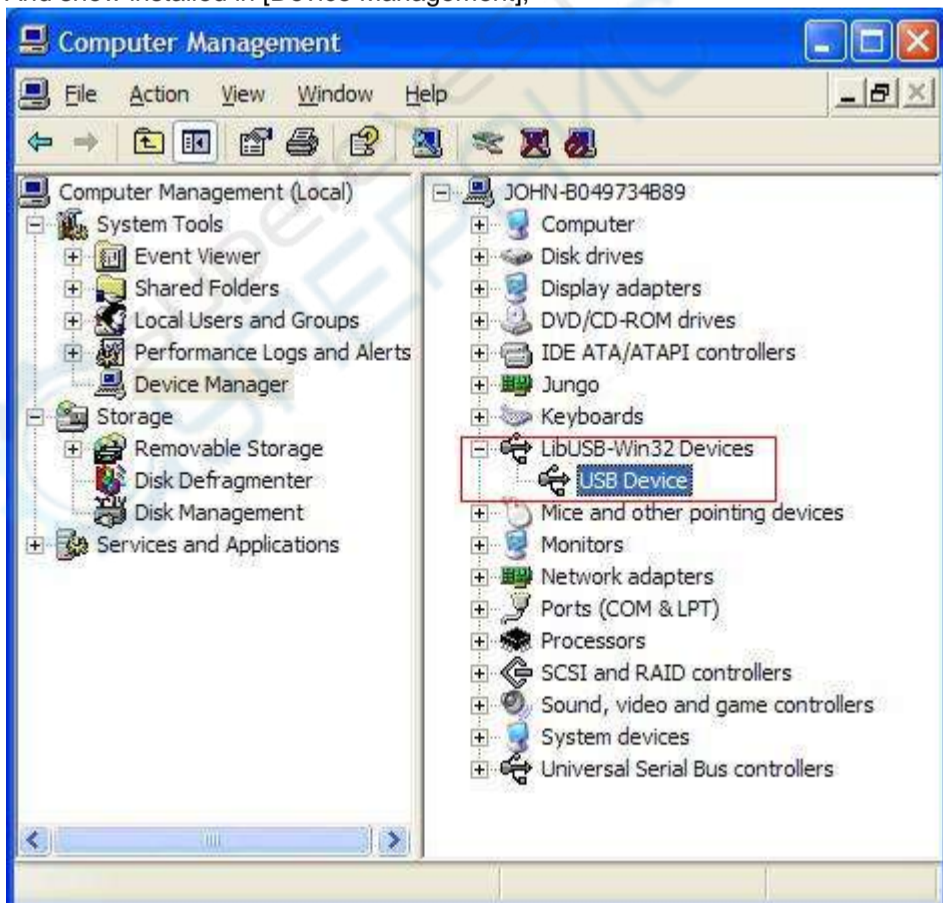
And complete,



And prompt as installed,



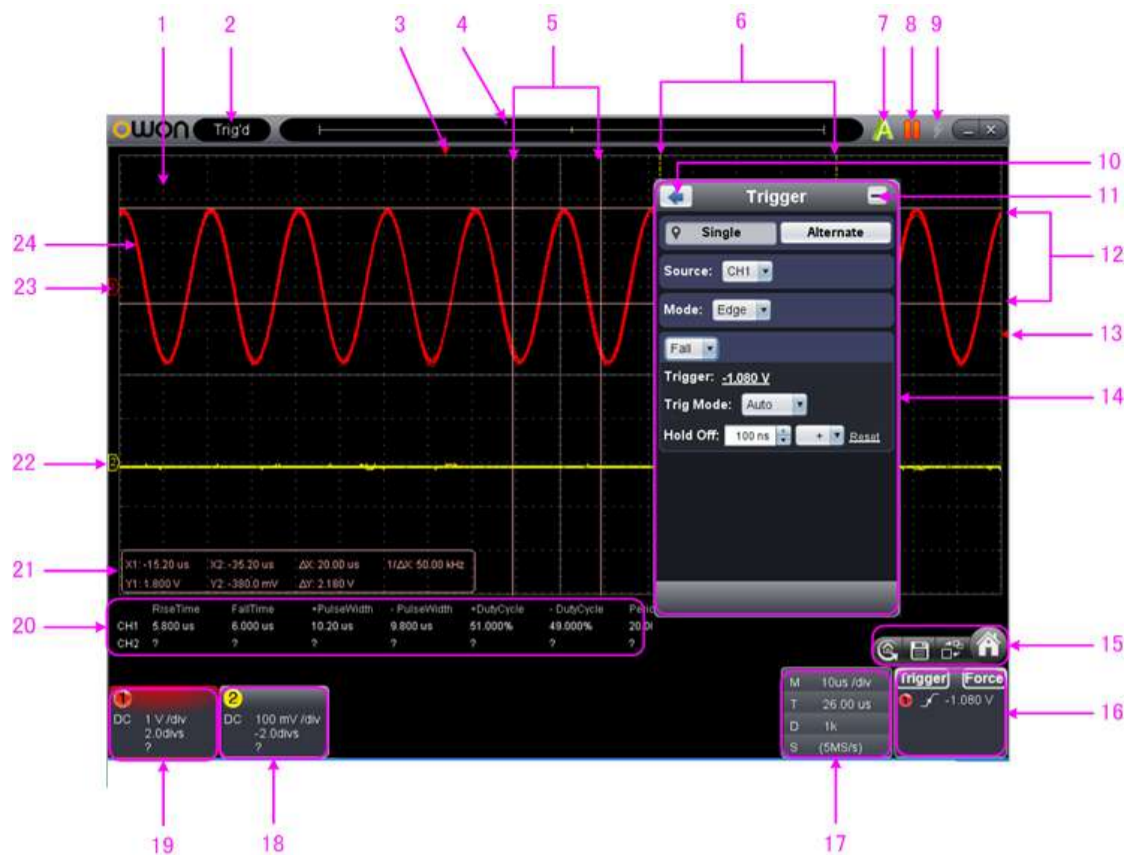
And show installed in [Device Management],



Now you can use the program and use it for USB communication.

If there is an early version of USB driver in your computer, you could try running "reinstall.bat" to fix, the file is under the directory of "USBDRV".

## II. User Interface



1. Waveform Display Area
2. Display status, click to choose "Disconnect", "Install USB Driver" or "Connect LAN". Refer to the instruction of the status after this list.
3. The red pointer indicates the horizontal position for the trigger
4. The pointer indicates the trigger position in the internal memory
5. Measure time with cursors
6. The two yellow dotted lines indicate the size of the viewing expanded window
7. Auto set, see [15.How to Use Executive Buttons](#)
8. Run/Stop, see [15.How to Use Executive Buttons](#)
9. Single Trigger, see [15.How to Use Executive Buttons](#)
10. Back to Home menu
11. Hide the menu
12. Measure voltage with cursors
13. The red pointer shows the trigger level position for CH1 (yellow for CH2). It can be dragged up and down.
14. Function menu, click to show/hide
15.
  - Shortcut icon of resetting to factory settings, see "[Default](#)"
  - Shortcut icon of exporting waveform, see "[Pause&Export](#)"
  - Switch Three View/One View. In the Three View display mode, the left top is XY mode widow, the right top is FFT window.
  - Show/hide Function menu
16. Trigger window, see [4.How to Set the Trigger System](#)
17. Sample and Period window, see [3.How to Set the Horizontal System](#)
- 18/19. Channel window of CH2 and CH1, see [2.How to Set the Vertical System](#)
20. Display the measured type and value of the corresponding channel, see [6.How to Measure Automatically](#)
21. Cursor measure window, see [8.How to Measure with Cursors](#)
- 22/23. The yellow pointer shows the grounding datum point (zero point position) of the CH2 waveform. If the pointer is not displayed, it means that this channel is turned off. (Red pointer is for CH1)
24. The waveform of CH1

### Keyboard Shortcuts

- Space:** Run/Stop
- Enter:** Auto set
- Q:** The voltage division of Channel 1 decreases one level
- A:** The voltage division of Channel 1 increases one level
- W:** The voltage division of Channel 2 decreases one level

**S:** The voltage division of Channel 2 increases one level  
 ←: Time base decreases one level  
 →: Time base increases one level  
**F1:** Open this help document

### Instruction of the status information

Auto	Automatic trigger mode
Ready	Ready for a trigger
Trig'd	Has triggered
Scan	Slow scan
Stop	Data acquisition stopped
Error	Error occurred
ReSyncing	Synchronize with the oscilloscope again
AutoSet	In process of auto setting

The statuses of not staying connected with the oscilloscope:

Offline	No connection with the oscilloscope
USBFound	Find available USB devices
USBDrvErr	USB drivers installed error
MachineNotSupport	Can not recognize the device

The statuses in the process of connecting with the oscilloscope:


Linking	Being connecting with the oscilloscope
Connect	connect successfully
Match	Matching the model
Syncing	Sync the settings

## III. Operations Instruction


Relevant operations of this software.

### 1. How to Set the Probe Attenuation Coefficient

The probe has several attenuation coefficients, which will influence the vertical scale factor of the oscilloscope. To change or check the probe attenuation coefficient in the menu of oscilloscope:

- (1) Click  to show Function menu, choose "Channel".
- (2) Set "Probe Rate" to the proper value corresponding to the probe.

This setting will be valid all the time before it is changed again.




**Caution:**  
 The default attenuation coefficient of the probe in the software is preset to 10X.  
 Make sure that the set value of the attenuation switch in the probe is the same as the menu selection of the probe attenuation coefficient in the software.

The set values of the probe switch are 1X and 10X.



Figure: Attenuation Switch



**Caution:**  
 When the attenuation switch is set to 1X, the probe will limit the bandwidth of the oscilloscope in 5MHz. To use the full bandwidth of the oscilloscope, the switch must be set to 10X.

## 2.How to Set the Vertical System

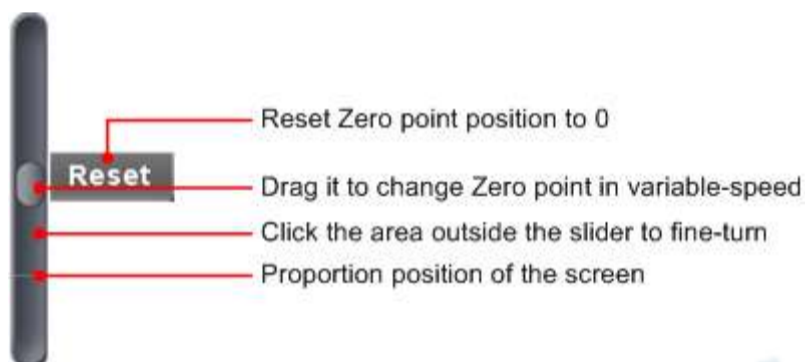
You can set the corresponding parameters of vertical system in the Channel window (18/19 in [II. User Interface](#)).



In the voltage division list, you can select the proper value. Take VDS3102 for instance.



You can set the zero point position through the control bar to regulate of the vertical display position of the signal. You can also drag the zero point position pointer (22, 23 in [II. User Interface](#)).



Drag the slider up to increase, down to decrease; the further from the center, the higher the changing speed is.

### Keyboard Shortcuts

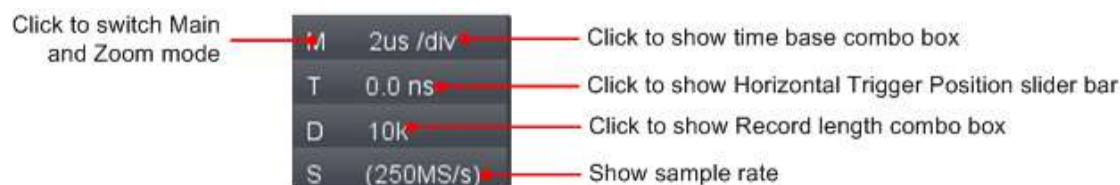
- Q:** The voltage division of Channel 1 decreases one level
- A:** The voltage division of Channel 1 increases one level
- W:** The voltage division of Channel 2 decreases one level
- S:** The voltage division of Channel 2 increases one level

## Cymometer

It is a 6-digit cymometer. The cymometer can measure frequencies from 2Hz to the full bandwidth. Only if the measured channel has triggering signal and in **Edge** mode, it can measure frequency correctly. In the **Single** trigger mode, it is a one channel cymometer and it can only measure the frequency of the triggering channel. In the **ALT** trigger mode, it is a two channel cymometer and it can measure the frequency of two channels.

## 3.How to Set the Horizontal System

You can set the corresponding parameters of horizontal system in the Capture&period window (17 in [II. User Interface](#)).



You can use Horizontal Trigger Position control bar to adjust the horizontal position of the signal in the waveform window. You can also drag the red pointer to adjust it (3 in [II. User Interface](#)).





**Note:** Different machines have different ranges of time base, here just take VDS3102 for instance. The further from the center, the higher the changing speed is.

#### Keyboard Shortcuts

- ←: Time base decreases one level
- : Time base increases one level

See also: [11.How to zoom the waveform](#)

## 4.How to Set the Trigger System

Trigger determines when VDS starts to acquire data and display waveform. Once trigger is set correctly, it can convert the unstable display to meaningful waveform.

When VDS starts to acquire data, it will collect enough data to draw waveform on left of trigger point. VDS continues to acquire data while waiting for trigger condition to occur. Once it detects a trigger it will acquire enough data continuously to draw the waveform on right of trigger point.

Click to show Function menu, choose "Trigger".

You can also click **Trigger** in the right bottom window to show it.



## Trigger Control

The oscilloscope provides two trigger types: single trigger and alternate trigger.

**Single trigger:** Use a trigger level to capture stable waveforms in two channels simultaneously.

**Alternate trigger:** Trigger on non-synchronized signals.

The **Single Trigger** and **Alternate Trigger** menus are described respectively as follows:

### Single trigger

1. In Trigger menu, choose "Single" (the chosen label has a mark).
2. Choose Source.
3. Choose Mode.

Single trigger has four modes: edge trigger, video trigger, slope trigger and pulse trigger.

**Edge Trigger:** It occurs when the trigger input passes through a specified voltage level with the specified slope.

**Video Trigger:** Trigger on fields or lines for standard video signal.

**Slope Trigger:** The oscilloscope begins to trigger according to the signal rising or falling speed.

**Pulse Trigger:** Find pulses with certain widths.

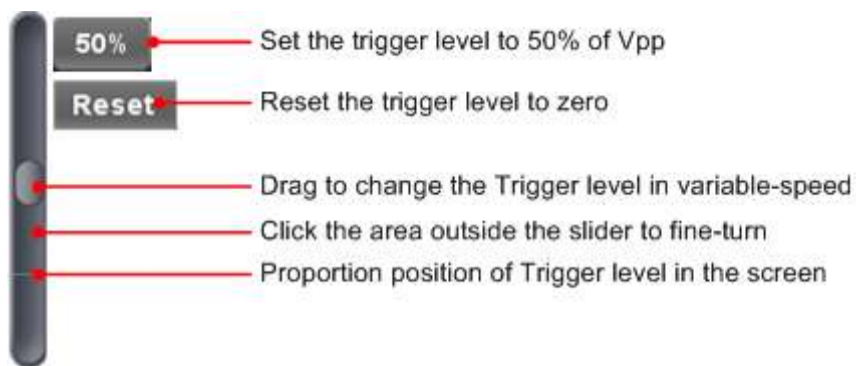
The four trigger modes in Single Trigger are described respectively as follows:

### Edge Trigger

Choose Mode as "Edge". An edge trigger occurs on trigger threshold value of input signal. Select Edge trigger mode to trigger on rising edge or falling edge.

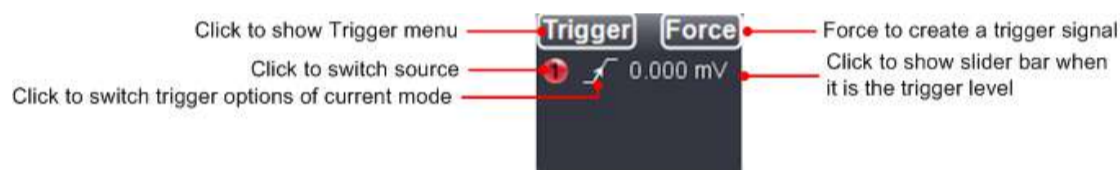
#### Set in Trigger menu:

- (1) Choose "Rise" to trigger on rising edge.  
Choose "Fall" to trigger on falling edge.
- (2) Click the voltage value after "Trigger" to show slider bar. You can also drag "13. Trigger point" in [II. User Interface](#).



- (3) Choose Trig Mode.  
Auto: Acquire waveform even no trigger occurs.  
Normal: Acquire waveform when trigger occurs.  
Single: When trigger occurs, acquire one waveform then stop.
- (4) Set Hold Off: When trigger occurs, acquire one waveform then stop (100ns~10s).  
Setting method: "+", "++", "+++" is the position of digit that will be changed. "+" represents the last digit, "++" represents the middle digit, "+++" represents the first digit. Eg. When "+" is chosen, click ▲, the last digit will be increased by 1.  
Click "Reset" to set Holdoff time as default value (100ns).

#### Set in Trigger window:



**Force:** Force to create a trigger signal and the function is mainly used in "Normal" and "Single" mode.

#### Video Trigger

Choose Mode as "Video" to trigger on fields or lines of NTSC, PAL or SECAM standard video signals.

- (1) Select video modulation: NTSC, PAL or SECAM.
- (2) Set trigger synchronization: Line, Field, Odd filed, Even filed or Line Number. When "Line Number" is selected, you can set the line number.
- (3) Set Hold Off. About the setting method, refer to **Edge Trigger**.

#### Slope Trigger

Choose Mode as "Slope" to set the oscilloscope as the positive/negative slope trigger within the specified time.

- (1) Select slope condition.
- (2) Set slope time.
- (3) Set the High level upper limit and Low level lower limit.
- (4) Set Trig Mode and Hold Off. About the setting method, refer to **Edge Trigger**.

$$\text{Slew rate} = (\text{High level} - \text{Low level}) / \text{Settings}$$

#### Pulse Width Trigger

Choose Mode as "Pulse". Pulse trigger occurs according to the width of pulse. The abnormal signals can be detected through setting up the pulse width condition.

- (1) Select pulse width condition and set time.
- (2) Set trigger level.
- (3) Set Trig Mode and Hold Off. About the setting method, refer to **Edge Trigger**.

#### Alternate trigger

Trigger signal comes from two vertical channels when alternate trigger is on. This mode is used to observe two unrelated signals. You can choose different trigger modes for different channels. The options are as follows: edge, video, pulse or slope.

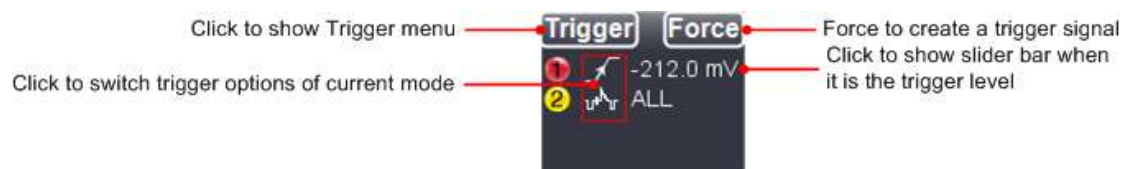
#### Set in Trigger menu:

1. In Trigger menu, choose "Alternate" (the chosen label has a 📍 mark).
2. Choose Source.
3. Choose Mode.

About the setting method of Mode and parameters, refer to **Single trigger**.

**Note:** In alternate trigger, only one channel at most can be set as Video mode. You can not choose Video in both channels. When VDS1022(I), only channel 1 can be set as video mode.

#### Set in Trigger window:



Instruction of Trigger mode icon in Trigger window:

- |  |  |
|--|--|
|  Rise in Edge mode                     |  Fall in Edge mode                      |
|  Synchronic trigger in video line      |  Synchronic trigger in video field      |
|  Synchronic trigger in video odd filed |  Synchronic trigger in video even field |
|  Rising in Slope                       |  Falling in Slope                       |
|  +Pulse Width                          |  -Pulse Width                           |

## 5.How to Set the Channels








Click  to show Function menu, choose "Channel". You can also click  or  in the Channel window on the left bottom. Or click , ,  or  in the Channel window on the left bottom when it is four- channel oscilloscope.



Fig. Dual channel setting

Fig. Four channel setting

### To turn on/off channels

Click to choose "CH1" or "CH2", check "On" to turn on the channel, uncheck it to turn off. You can also click the channel switch in Channel window in left bottom. See figure below.

### To invert a waveform

Waveform inverted: the displayed signal is turned 180 degrees against the phase of the earth potential. Click to choose "CH1" or "CH2", check "Opposite" to invert the waveform, uncheck it to display normally.

### To set channel coupling

DC: Pass both AC and DC components of the input signal.  
 AC: Block the DC component of the input signal.  
 Ground: Disconnect the input signal.  
 You can also click the coupling mode to switch it. See figure below.

### To adjust the probe attenuation

For correct measurements, the attenuation coefficient settings in the operating menu of the Channel should always match what is on the probe (see [1.How to Set the Probe Attenuation Coefficient](#) ). If the attenuation coefficient of the probe is 1:1, the menu setting of the input channel should be set to X1.

Some operations could be done in Channel window:



## 6.How to Measure Automatically

Click  to show Function menu, choose "Measure".

Automatic measurement works under this function. Totally twenty kinds of measurements. At most 8 types of measurements could be displayed on the bottom left of the screen. The oscilloscopes provide 20 parameters for auto measurement, including Vpp, Vmax, Vmin, Vtop, Vbase, Vamp, Vavg, Vrms, Overshoot, Preshoot, Freq, Period, Rise Time, Fall Time, Delay A→B, Delay A→B, +Width, -Width, +Duty, -Duty.

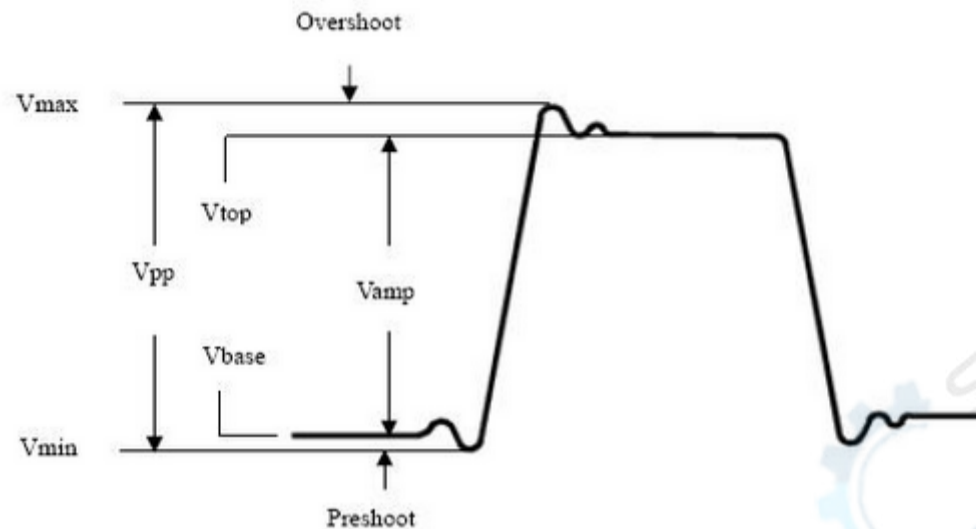
**Show All:** Choose channel from the list on the right side of "Show All", a pop-up window will show all the measurement values.

**Add measurement:** Check the channel and measurement type. Measurement results display on the bottom left. You can add 8 types at most for each channel. If 8 types are exceeded, the former option will be canceled. The measured values of two channels can be displayed simultaneously.

**Remove measurement:** Uncheck the measurement type to remove it. Click "Remove All" to remove all measurements.

### The automatic measurement of voltage parameters

The VDS series oscilloscopes provide automatic voltage measurements including Vpp, Vmax, Vmin, Vavg, Vamp, Vrms, Vtop, Vbase, Overshoot and Preshoot. Figure below shows a pulse with some of the voltage measurement points.



**Vpp:** Peak-to-Peak Voltage.

**Vmax:** The maximum amplitude. The most positive peak voltage measured over the entire waveform.

**Vmin:** The minimum amplitude. The most negative peak voltage measured over the entire waveform.

**Vamp:** Voltage between Vtop and Vbase of a waveform.

**Vtop:** Voltage of the waveform's flat top, useful for square/pulse waveforms.

**Vbase:** Voltage of the waveform's flat base, useful for square/pulse waveforms.

**Overshoot:** Defined as  $(V_{max} - V_{top}) / V_{amp}$ , useful for square and pulse waveforms.

**Preshoot:** Defined as  $(V_{min} - V_{base}) / V_{amp}$ , useful for square and pulse waveforms.

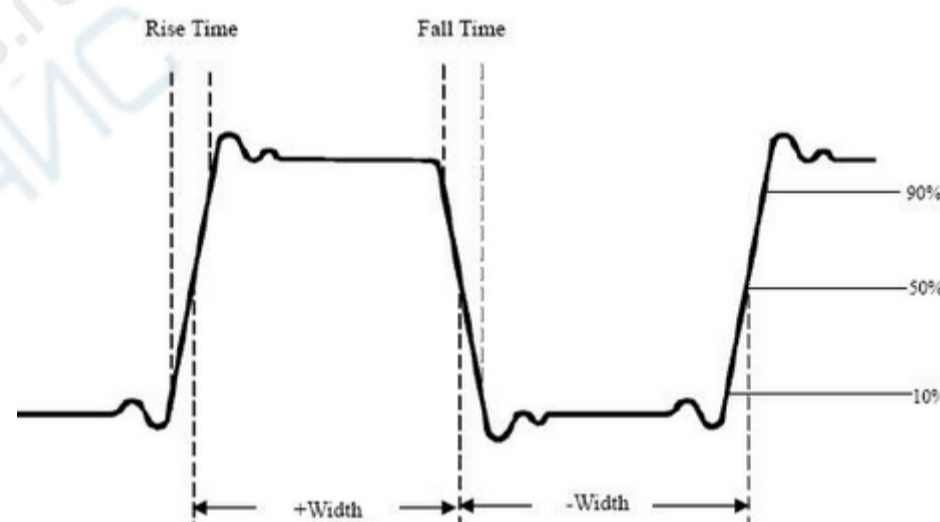
**Average:** The arithmetic mean over the entire waveform.

**Vrms:** The true Root Mean Square voltage over the entire waveform.

### The automatic measurement of time parameters

The VDS series oscilloscopes provide time parameters auto-measurements include Frequency, Period, Rise Time, Fall Time, +Width, -Width, Delay 1→2, Delay 1→2, +Duty and -Duty.

Figure shows a pulse with some of the time measurement points.



**Rise Time:** Time that the leading edge of the first pulse in the waveform takes to rise from 10% to 90% of its amplitude.

**Fall Time:** Time that the falling edge of the first pulse in the waveform takes to fall from 90% to 10% of its amplitude.

**+Width:** The width of the first positive pulse in 50% amplitude points.

**-Width:** The width of the first negative pulse in the 50% amplitude points.


**Delay 1→2:** The delay between the two channels at the rising edge.

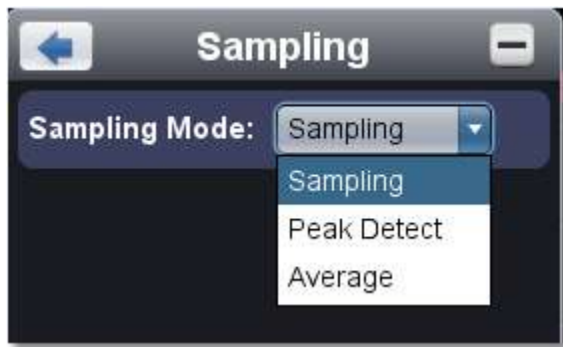
**Delay 1→2:** The delay between the two channels at the falling edge.

**+Duty:** +Duty Cycle, defined as  $+Width / Period$ .

**-Duty:** -Duty Cycle, defined as  $-Width / Period$ .

## 7.How to Implement Sampling Setup

Click  to show Function menu, choose "**Sampling**" to set sampling mode.



Sampling Mode	Description
Sampling	Normal sampling mode.
Peak Detect	Use to capture maximal and minimal samples. Finding highest and lowest points over adjacent intervals. It is used for the detection of the jamming burr and the possibility of reducing the confusion.
Average	It is used to reduce the random and don't-care noises, with the editable number ( $1 \leq \text{number} \leq 128$ ) of averages.

Figure: Normal sampling mode display, in which no burr can be detected.

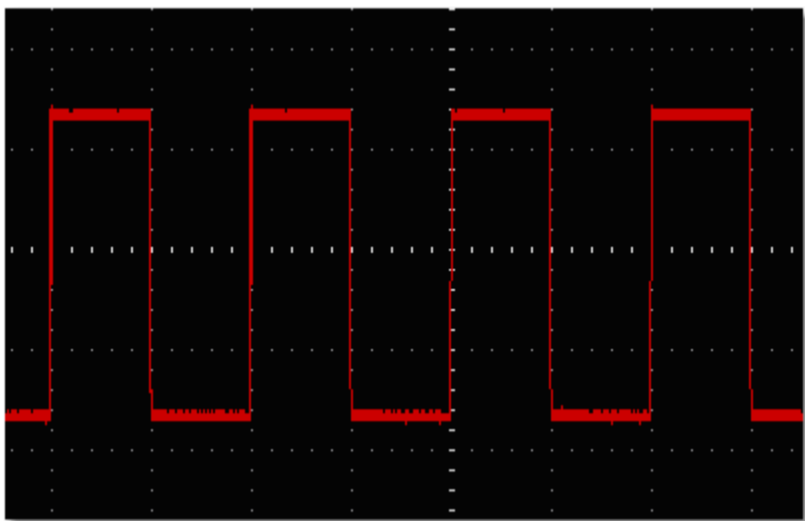


Figure: Peak Detect mode, under which the burrs on the falling edge of the square wave, can be detected and the noise is heavy.

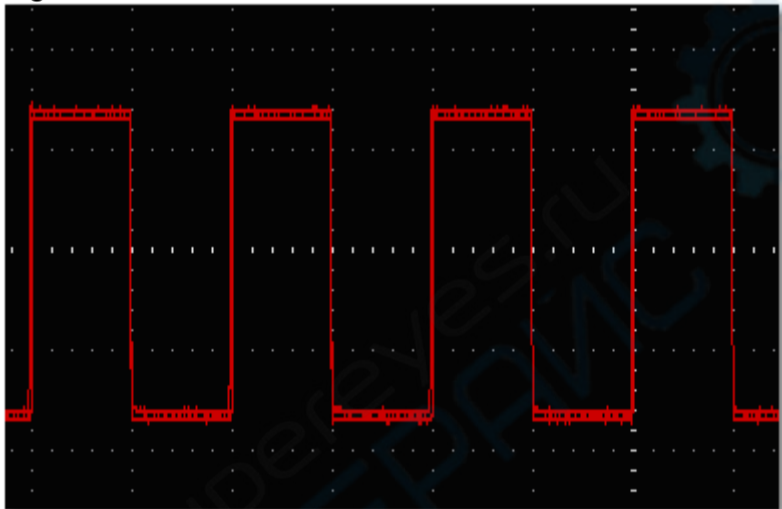
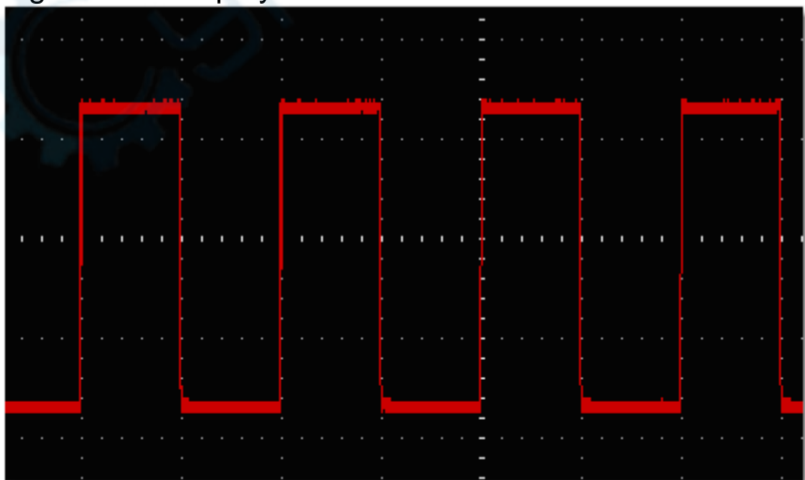

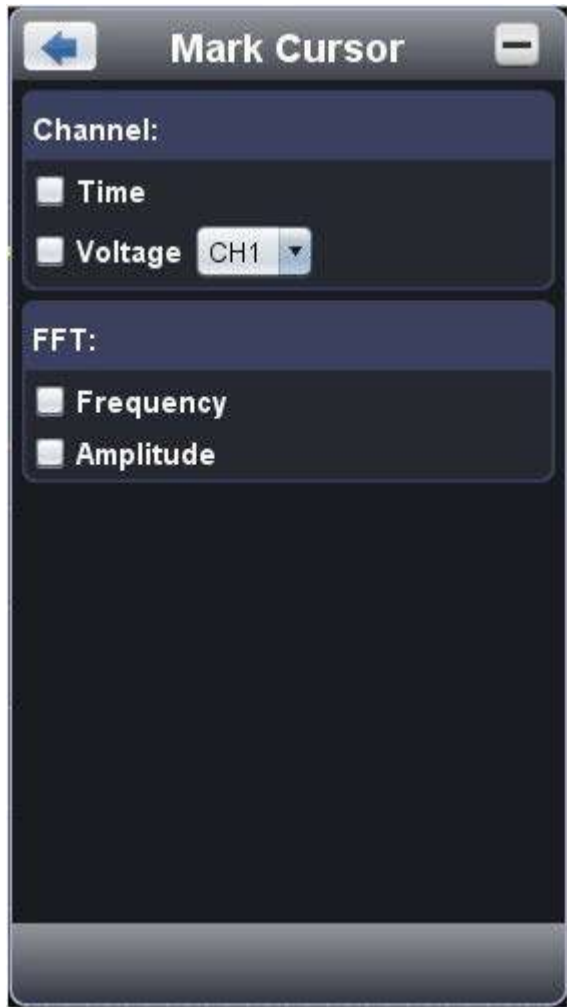


Figure: The displayed waveform after the noise is removed under the Average Mode, in which the average number of 16 is set.



## 8.How to Measure with Cursors

Click  to show Function menu, choose "Mark Cursor".

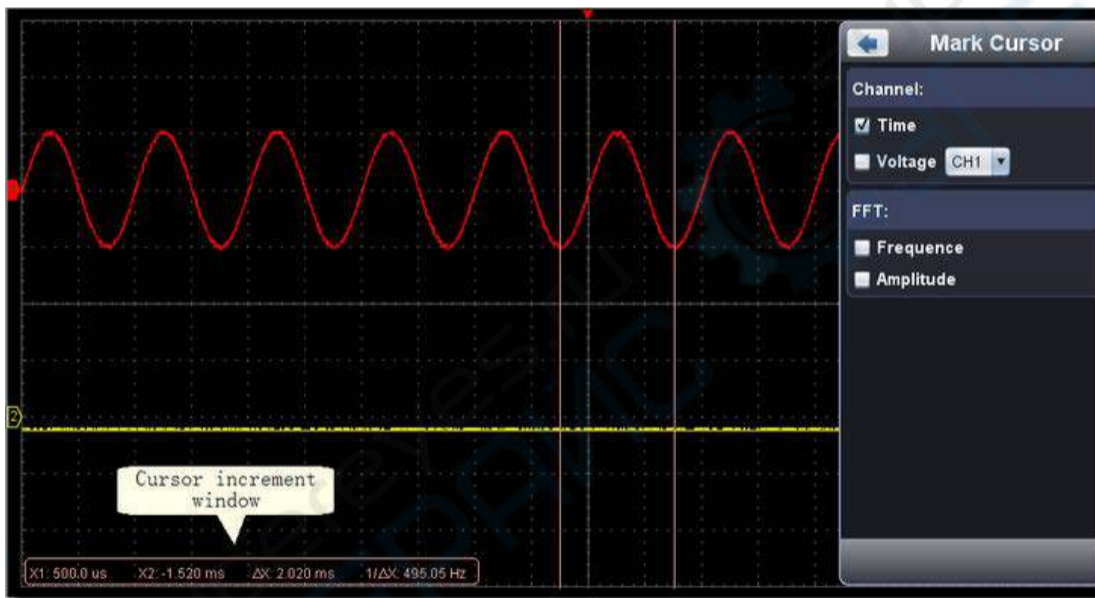


### Normal mode

1. **Choose source:** choose the channel to be measured by cursors between CH1 and CH2.
2. **Check measurement type:** choose either Time cursor measurement or Voltage cursor measurement, or both.

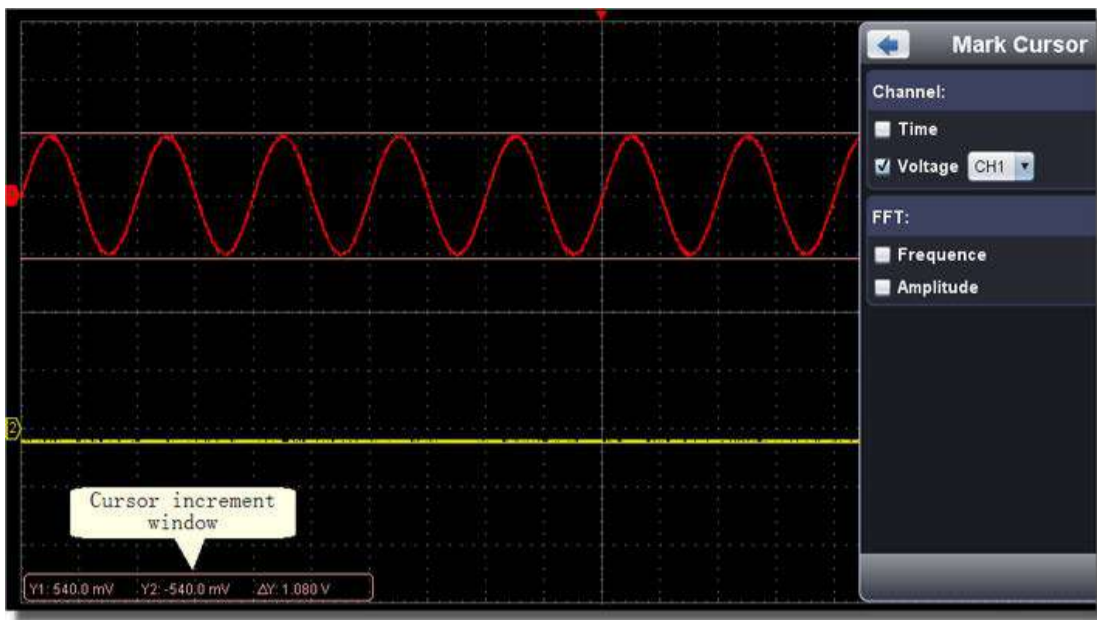
**Time cursor measurement:** Tick on "Time" option, then two light red lines display along the vertical direction of the screen, which represent Cursor 1 and Cursor 2.

Place the mouse pointer over Cursor 1 or Cursor 2, drag after the mouse pointer changing to  $\leftrightarrow$ , adjust the positions of Cursor 1 and Cursor 2 according to the waveform to be measured. The cursor increment window at the left bottom shows current time of the two cursors, absolute time difference of the two cursors and frequency. (See figure below)



**Voltage cursor measurement:** Tick on "Voltage" option, then two light red lines which represent Cursor 1 and Cursor 2 display along the horizontal direction.

Place the mouse pointer over Cursor 1 or Cursor 2, drag after the mouse pointer changing to  $\updownarrow$ , adjust the position of Cursor 1 and Cursor 2 according to the waveform to be measured. The cursor increment window on the bottom left shows current position of the two cursors, absolute voltage amplitude difference of the two cursors and frequency. (See Figure below)

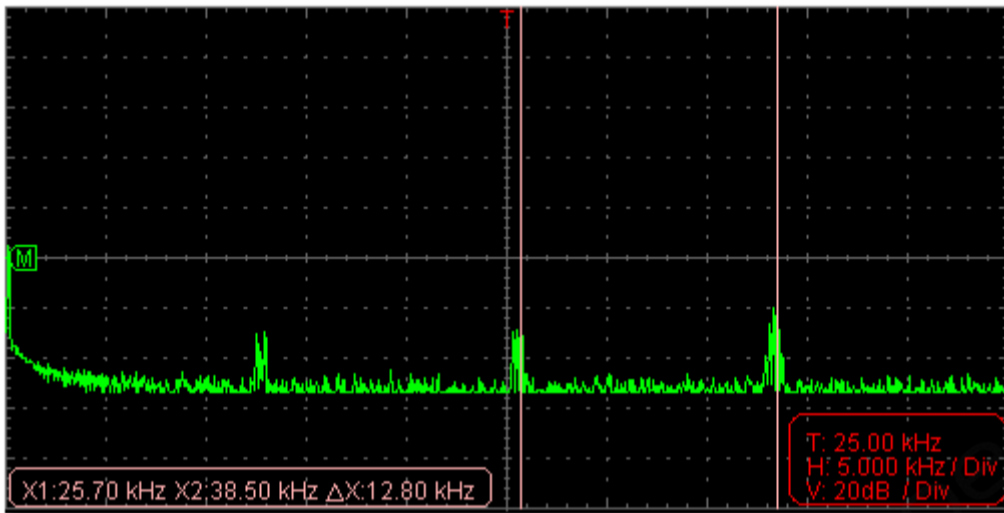


### The cursor measurement for FFT mode

**Check measurement type:** choose either Amplitude Measurement or Frequency Measurement at the mode of FFT, or both at the same time.

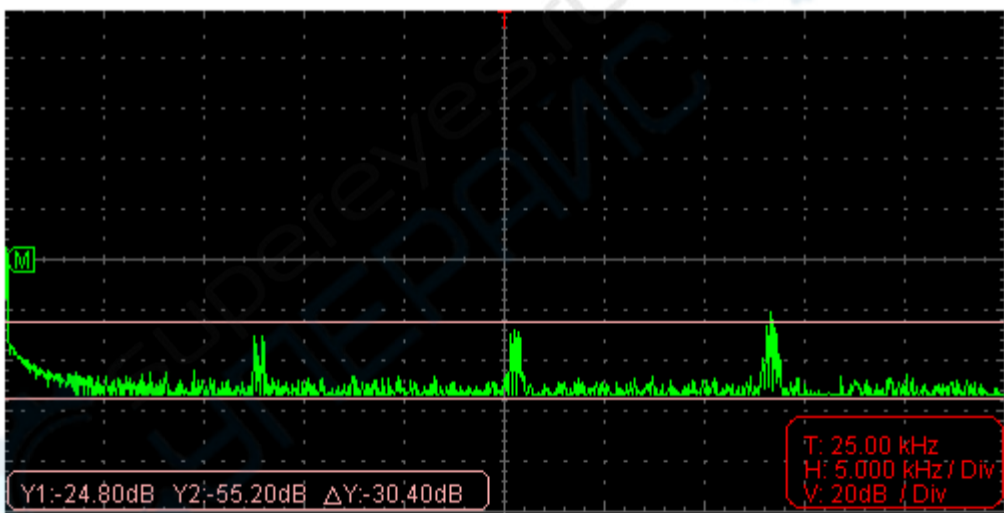
**Frequency Measurement:** Tick on "Frequency", enter Home page->Math->FFT, then two light red lines represent Cursor 1 and Cursor 2 show along the vertical direction on FFT window.

Place the mouse cursor on Cursor 1 or Cursor 2, drag after the mouse shape changing to  $\leftrightarrow$ , adjust the position of Cursor 1 and Cursor 2 according to the waveform to be measured. The cursor increment window on the bottom left of FFT window shows current frequency of the two cursors, absolute frequency difference of the two cursors. (See figure below)



**Vamp Measurement:** Tick on "Amplitude", enter Home page->Math->FFT, then two light red lines represent Cursor 1 and Cursor 2 show along the horizontal direction on FFT window.

Place the mouse cursor on Cursor 1 or Cursor 2, drag after the mouse shape changing to  $\updownarrow$ , adjust the position of Cursor 1 and Cursor 2 according to the waveform to be measured. The cursor increment window on the bottom left of FFT window shows current position of the two cursors, absolute voltage amplitude difference of the two cursors. (See figure below)




## 9.How to Set the Display System

Click  to show Function menu, choose "Display".



### Display Type

Click the button to choose the display type (the chosen button has a  mark).

**Vector:** The space between the adjacent sampling points in the display is filled with the vector form.

**Dots:** Only the sampling points are displayed.

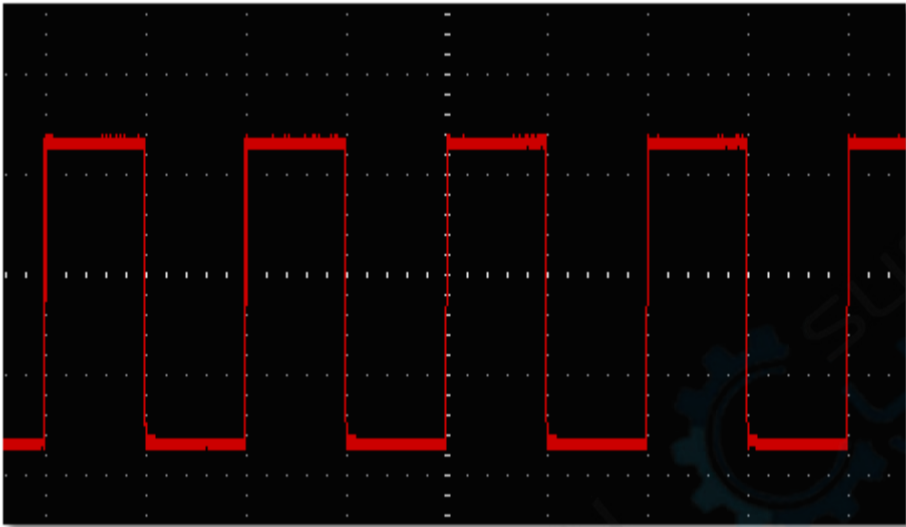


Figure: Display in the Vector Form

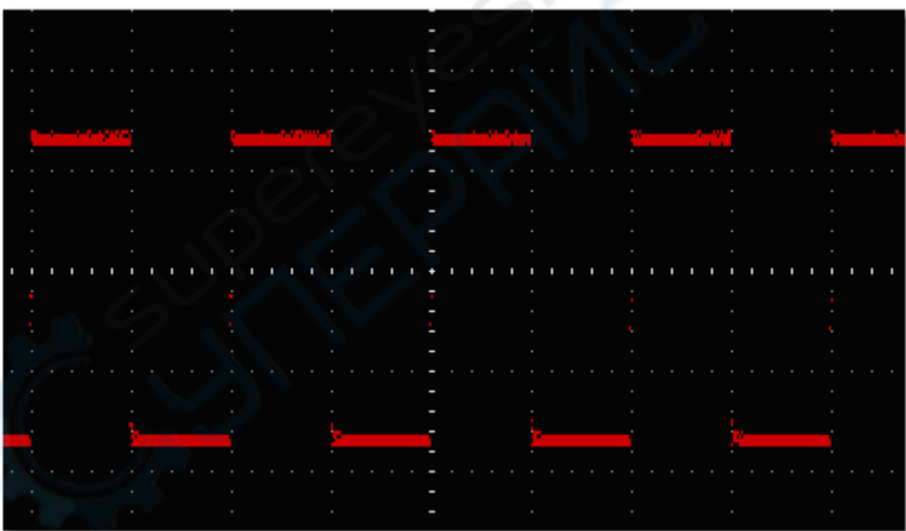


Figure: Display in the Dots Form

### XY Mode

Check "XY Mode", the user interface is switched into Three View mode. Choose the first channel and the second channel. In XY mode width, the first channel is displayed in the horizontal axis and the second in the vertical axis.

**Note:** XY Mode only support 1K storage memory. The storage memory is set to 1K automatically.

### Persistence

When the Persistence function is used, the persistence display effect of the picture tube oscilloscope can be simulated. The reserved original data is displayed in fade color and the new data is in bright color.

Different persistence time can be chosen: Off, 0.5 second, 1second, 2seconds, 5seconds and Infinite.



When the "Infinite" option is set, the measuring points will be stored till the controlling value is changed. Click "Clear" button, the persistence will be cleared.

**Note:**

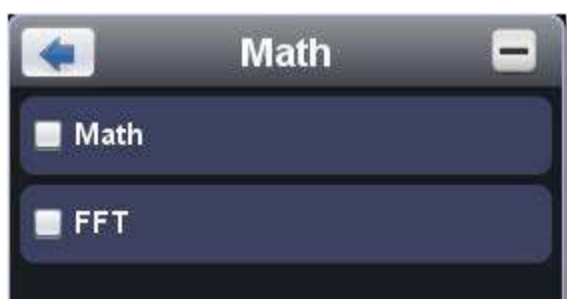
If the time base, voltage division, deep memory is changed, or the channel is turned off/on, the persistence will be cleared automatically and record the updated waveform.

**Grid Brightness**


Drag slider to adjust the brightness of grid in the Waveform Display Area.

**10. Use Mathematical Manipulation Function**

The **Mathematical Manipulation** function is used to show the results of the addition, multiplication, division and subtraction operations between Channel 1 and Channel 2, and the FFT operation of Channel 1 or Channel 2.



**Math of dual waveform**

1. Turn on CH1 and CH2.
2. Click  to show Function menu, choose "Math". Check "Math".
3. Choose the factors and operator. Select the voltage division of M. The software transforms the waveform data of the two factors into selected voltage division of M and calculates. The green calculated waveform M is displayed in the screen.




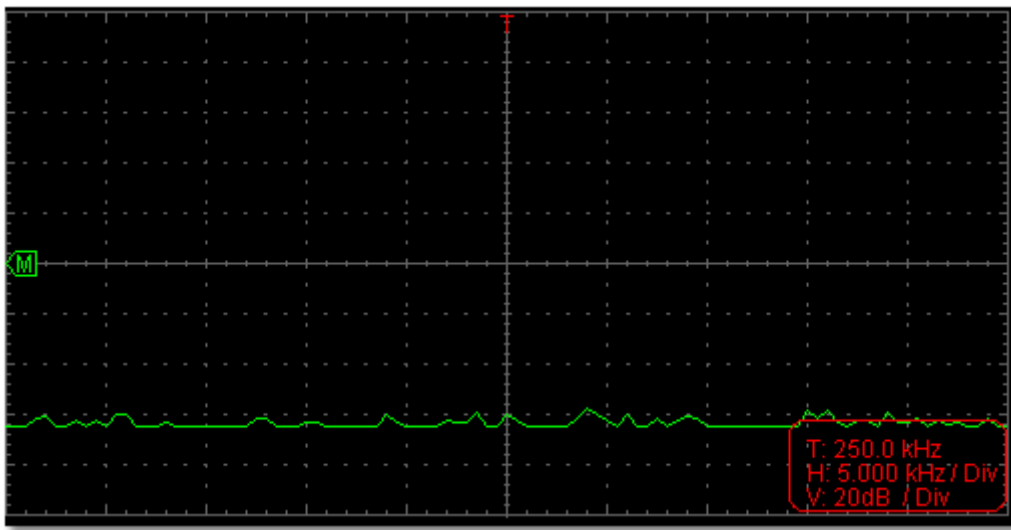
**Using FFT function**

The FFT (fast Fourier transform) math function mathematically converts a time-domain waveform into its frequency components. It is very useful for analyzing the input signal on Oscilloscope. You can match these frequencies with known system frequencies, such as system clocks, oscillators, or power supplies.

FFT function in this oscilloscope transforms 2048 data points of the time-domain signal into its frequency components mathematically and the final frequency contains 1024 points ranging from 0Hz to Nyquist frequency.

Taking the FFT operation for example, the operation steps are as follows:

1. Click  to show Function menu, choose "Math". Check "FFT". The user interface is switched into Three View mode.
2. Set "Channel", "Window", "Format", "Scale", "Frequency Base".
3. You can drag anywhere in FFT window to move the signal up and down and side to side.



### To select the FFT window

There are four FFT windows. Each one has trade-offs between frequency resolution and magnitude accuracy. What you want to measure and your source signal characteristics help you to determine which window to use. Use the following guidelines to select the best window.

Type	Characteristics	Window
Hamming	<p>Better solution for magnitude than Rectangle, and good for frequency as well. It has slightly better frequency resolution than Hanning.</p> <p>Recommend to use for:</p> <ul style="list-style-type: none"> <li><input type="checkbox"/> Sine, periodic and narrow band random noise.</li> <li><input type="checkbox"/> Transients or bursts where the signal levels before and after the event are significantly different.</li> </ul>	
Rectangle	<p>Best solution for frequency, worst for magnitude. Best type for measuring the frequency spectrum of non-repetitive signals and measuring frequency components near DC.</p> <p>Recommend to use for:</p> <ul style="list-style-type: none"> <li><input type="checkbox"/> Transients or bursts, the signal level before and after the event are nearly equal.</li> <li><input type="checkbox"/> Equal-amplitude sine waves with frequencies those are very close.</li> <li><input type="checkbox"/> Broadband random noise with a relatively slow varying spectrum.</li> </ul>	
Blackman	<p>Best solution for magnitude, worst for frequency.</p> <p>Recommend to use for:</p> <ul style="list-style-type: none"> <li><input type="checkbox"/> Single frequency waveforms, to find higher order harmonics.</li> </ul>	
Hanning	<p>Good for magnitude, but poorer frequency resolution than Hamming.</p> <p>Recommend to use for:</p> <ul style="list-style-type: none"> <li><input type="checkbox"/> Sine, periodic and narrow band random noise.</li> <li><input type="checkbox"/> Transients or bursts where the signal levels before and after the event are significantly different.</li> </ul>	

The figures below are examples for measuring sine wave with a frequency of 1kHz under the selection of four different windows for FFT:

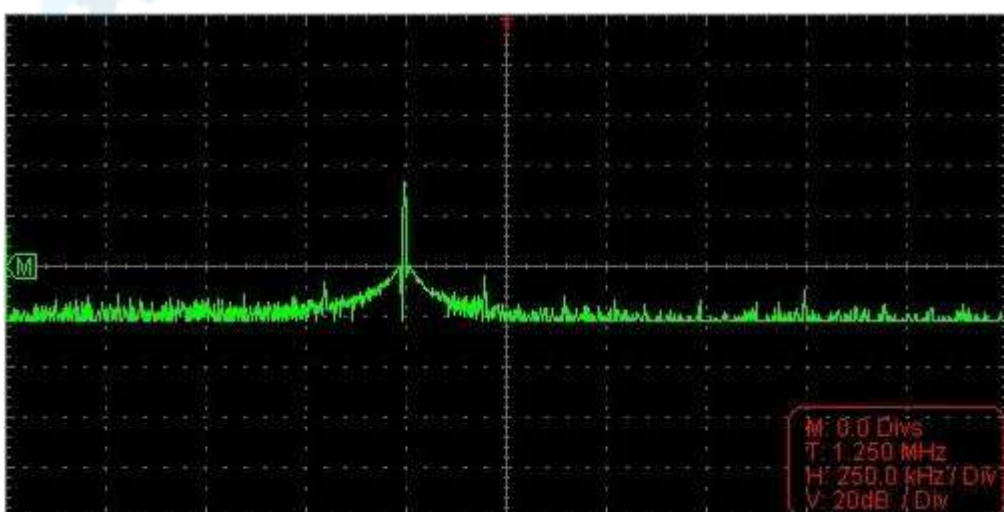


Figure: Hamming window

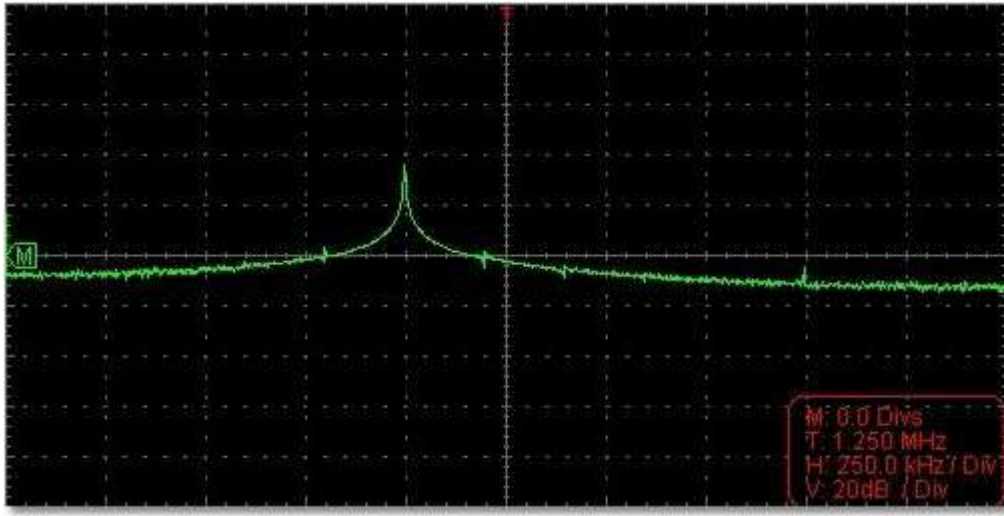


Figure: Rectangle window

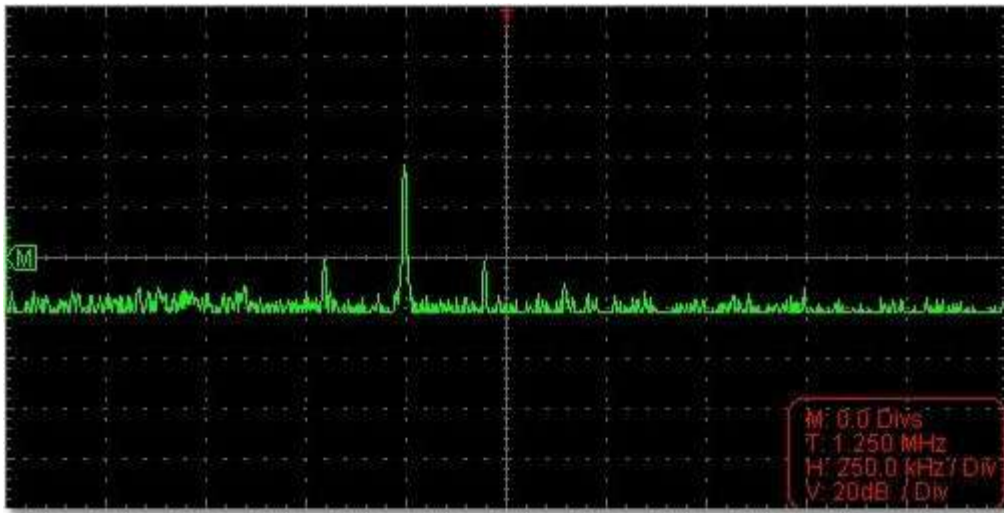


Figure: Blackman window

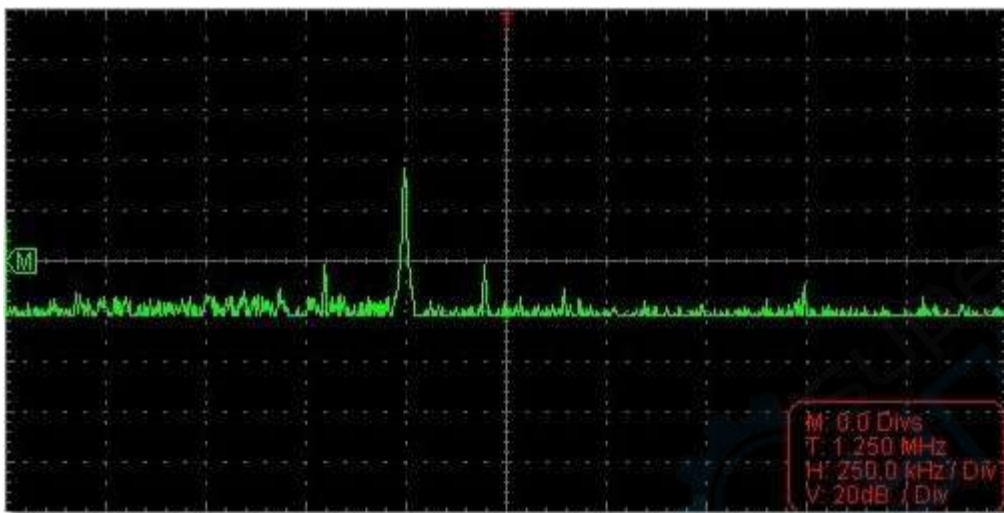


Figure: Hanning window

#### Notes for using FFT

- Select "Scale" to magnify the FFT waveform if necessary.
- Use the default **dB** scale for details of multiple frequencies, even if they have very different amplitudes. Use the **Vrms** scale to compare frequencies.
- DC component or offset can cause incorrect magnitude values of FFT waveform. To minimize the DC component, choose AC Coupling on the source signal.
- To reduce random noise and aliased components in repetitive or single-shot events, set the oscilloscope acquisition mode to average.


#### What is Nyquist frequency?

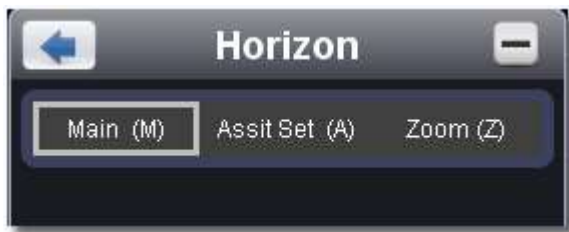
The Nyquist frequency is the highest frequency that any real-time digitizing oscilloscope can acquire without aliasing. This frequency is half of the sample rate. Frequencies above the Nyquist frequency will be under sampled, which causes aliasing. So pay more attention to the relation between the frequency being sampled and measured.

#### Note:

In FFT mode, only support to set coupling, voltage division and zero position in Channel window, other operations are prohibited. If you want to enter other menus, uncheck "FFT" first.

## 11.How to zoom the waveform

Click  to show Function menu, choose "Display".




### Main Time Base

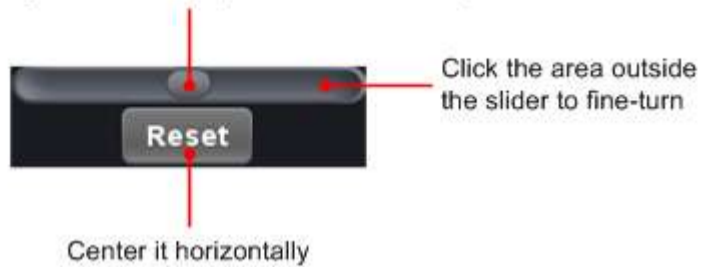
The setting of the horizontal main time base is used to display the waveform.

### Assist Set

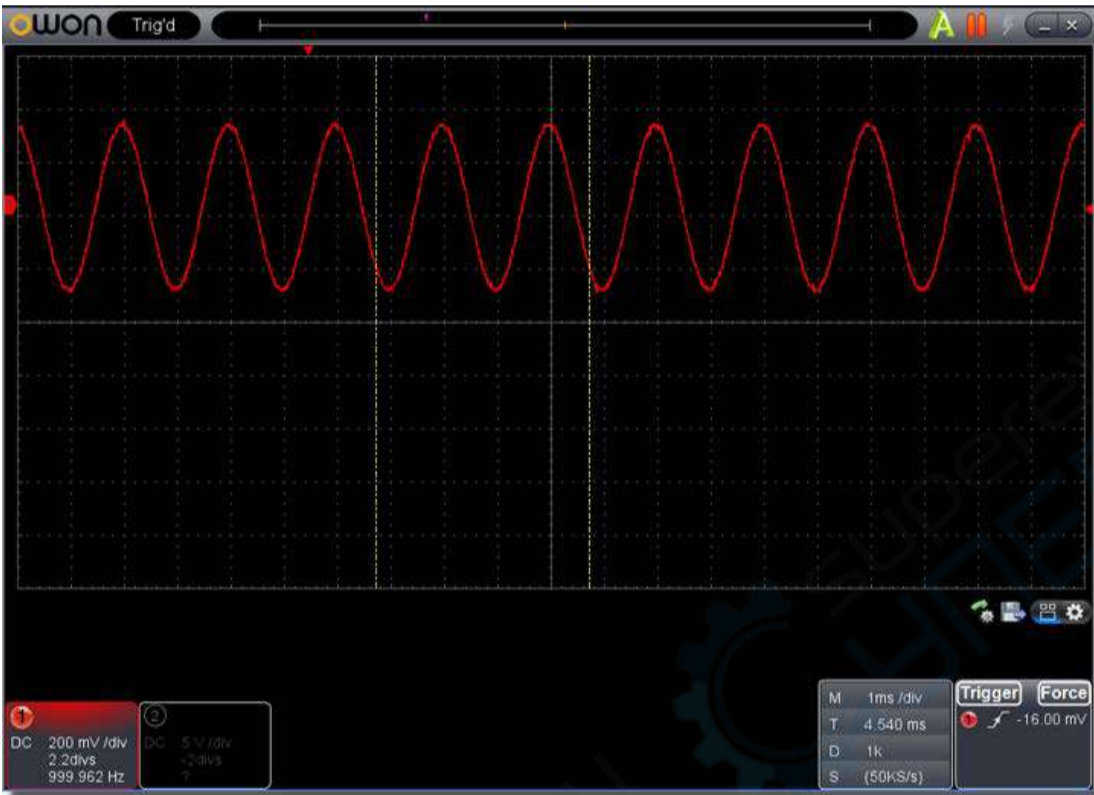
A window area is defined by two cursors, which will be expanded to the full screen size in **Window Expansion**.

Choose W value from the combo box to adjust the size of this window area. Click  to show the slider bar. You can adjust the horizontal position of the area in main window by it.

Drag it to change the horizontal position in variable-speed



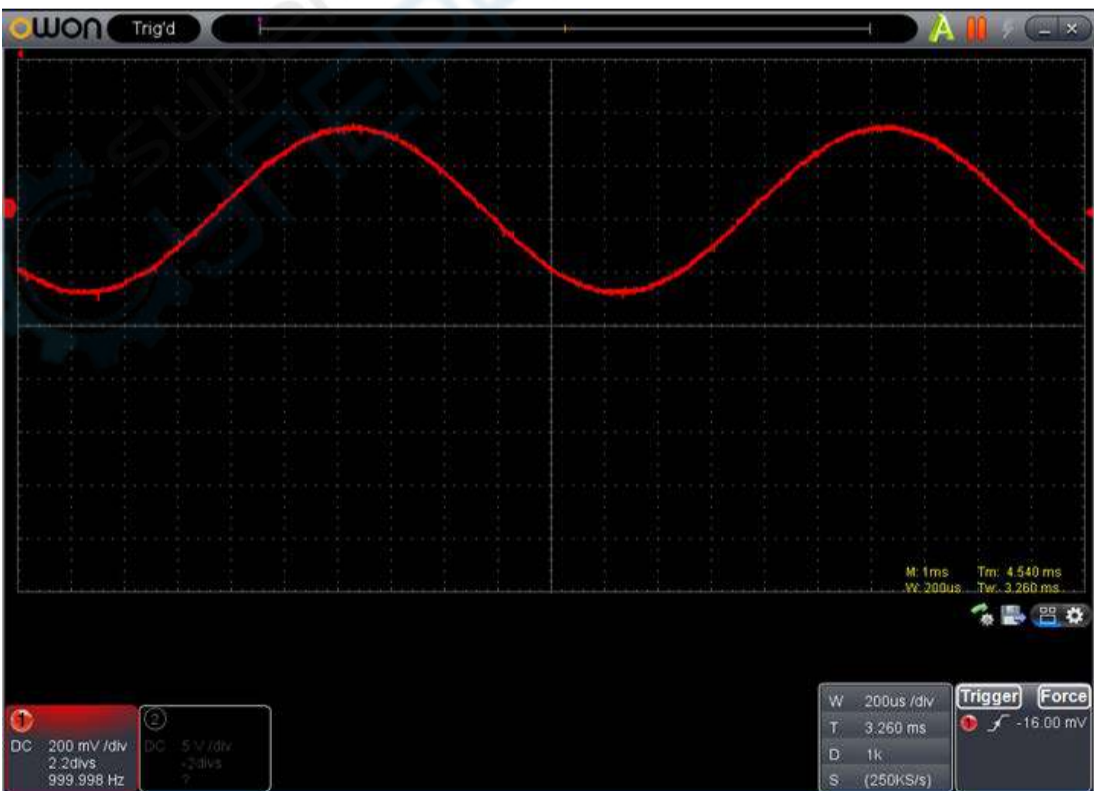
**Note:** In Assist Set status, the time base and horizontal trigger position can not be set.



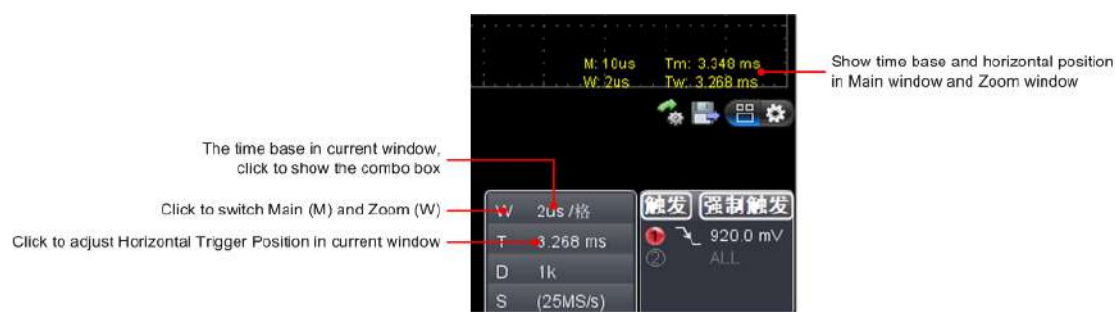
### Window Expansion

Click "Zoom", the window area defined by two cursors will be expanded to the full screen size.

You can adjust the time base W and horizontal trigger position Tw of zoom window in the menu. You can also drag the red pointer to adjust the horizontal trigger position (3 in [II. User Interface](#)).



You can also switch and set in Capture&period window as shown in the below.



## 12.How to do Pass/Fail test

The **Pass/Fail** function monitors changes of signals and output pass or fail signals by comparing the input signal that is within the pre-defined mask.

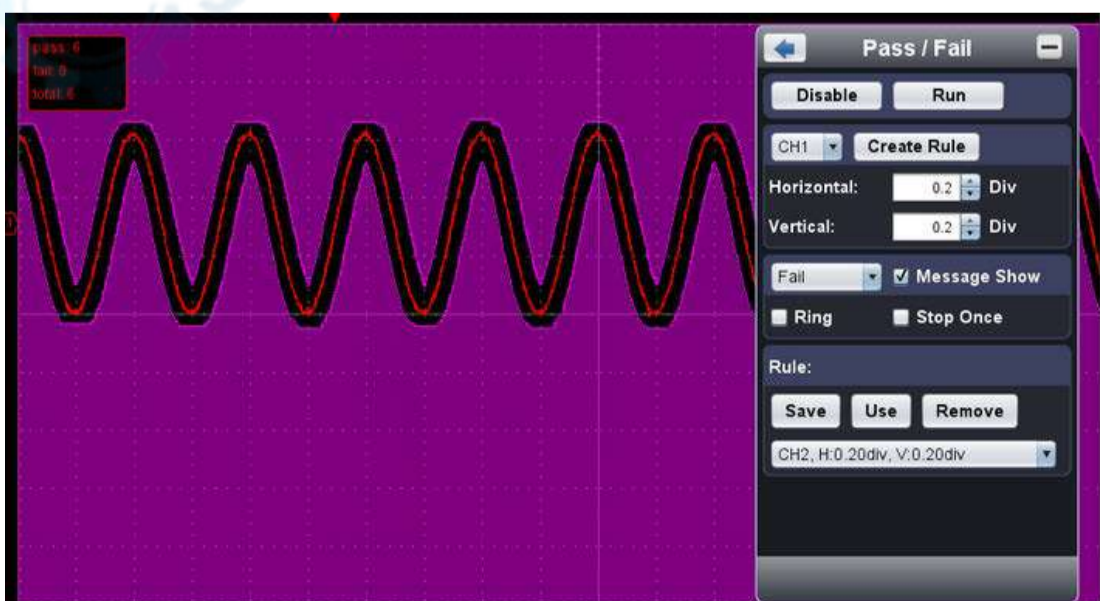
Click to show Function menu, choose "**Pass/Fail**".



Detect whether the input signal is within the limits of the rule, if it exceeds limits of the rule, it is "Fail"; otherwise it is "Pass". Also it can output fail or pass signal by built-in and configurable output port.

### To run the test, read the following steps:

- 1.Choose channel: Options include CH1,CH2 and Math.
- 2.Set horizontal tolerance and vertical tolerance. You can adjust by or input directly.
- 3.Click "Create Rule".
- 4.Set output type: Choose "Pass" or "Fail". Check or uncheck "Ring", "Message Show" and "Stop Once" as needed.
  - Ring: The bell rings when it meets the rule.
  - Stop Once: Stop once it meets the rule.
  - Message Show: Display the counting message on the left top.
- 5.Enable switch on: Click "Enable".
- 6.Begin to test: Click "Run".
- 7.Stop testing: Click "Stop".



### Save rule

Save: Save current rule.

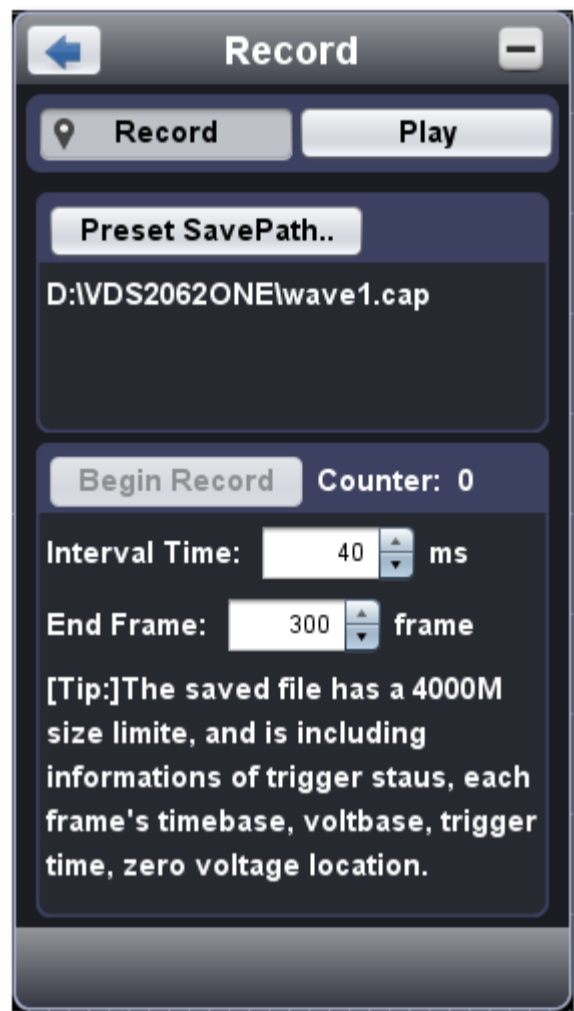
Use: Load the selected rule in the list as the testing rule.

Remove: Remove the selected rule in the list.

## 13.How to Record and Play a Waveform

Wave Record function can record the input current wave. You can set the interval between recorded frames and get better analysis effect with playback and storage function. The limit of the saved file size is 4000M. It will save the initial trig status, the time base, voltage division, horizontal trigger position and zero position of each frame during recording.

Click  to show Function menu, choose "Record".



### Record

1. Choose "Record" tab on the top.
2. Click "Preset Save Path" to specify the save location. Waveform files have the suffix ".cap".
3. Set "Interval Time" and "End Frame". Interval Time refers to the interval between recorded frames. Interval Time ranges from 0 to 100000ms and increment by 10ms.
4. Make the waveform in Run status.
5. Click "Begin Record". Counter starts to count the frame number.
6. Click "End Record" to stop recording, or wait until the Counter reaches the End Frame.

#### Note:

- 1.Waveforms of two channels can be recorded simultaneously.
- 2.You can turn on/off the channels while recording. Only channels turned on can be recorded. If a channel is turned off while recording, there will be no waveform of this channel after the frame when stopped.

### Replay the waveform recorded



1. Choose "Play" tab on the top.
2. Click "From..." to choose the waveform file to be replayed.
3. Set the start frame "Sta" and end frame "End".
4. Set Interval Time for replaying.
5. Check "Cycle" to play back the waveform in a loop. Uncheck it to replay just once.
6. Click "Play". "Numbers" shows the current frame number that is replayed.
7. Click "Pause" to pause it.
8. Drag slider to display the frame you need.

**Note:**

1. If the software is in Run status, playing back will make the current acquisition stopped.
2. When replaying, entering other menu items will make the replay paused.

## 14. How to Implement the Utility setting

Click  to show Function menu, choose "Utility".

### Language

Choose the desired language.

### Skin

Choose Black or Blue for interface skin. Then "Restart" button will appear. After clicking it, the software will be closed and restarted to apply the new skin.

### Open File

Choose BIN waveform file saved and open it, or just drag the file into the software interface to open it.

### Print Preview

Click to open the Print Preview Window.

Instruction of the menu items in Print Preview Window:

**File** → **Page Set**: Set the page margins  
**Print**: Enter printing window  
**Exit**: Close the Print Preview Window

**View** → **Page Transform**: Switch the page orientation between landscape and portrait  
**Whole page**: Display the full page on the screen  
**Face size**: Display in actual size  
**Default Scale...**: Display in a specified zoom factor  
**Show Wave Background**: Check to display wave background color; uncheck to display preview paper background  
**Set Preview Page Background**: Click to display color picker dialog box to set the color of preview page background

### Save Image

Click to save screen shot as an image file in png, bmp or gif format.

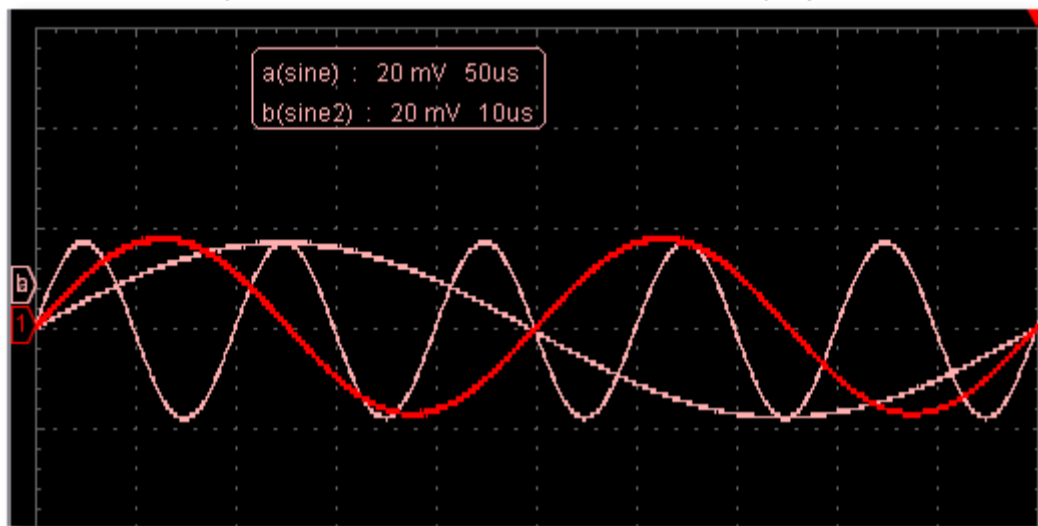
## Save/Refer

This function allows to store 8 reference waveforms. These waveforms can be displayed with the current waveform simultaneously. The recalled waveform can't be adjusted. The source can be CH1, CH2 or Math.


To save the waveform of CH1 into object "a" and recall it, the steps are as follows:

1. Choose CH1 as source.
2. Choose "To Object" as "a".
3. Fill in "Object Rename", such as "sine". Click "OK". The object name is renamed as "a(sine)". This step can be skipped.
4. Click "save".
5. Select "a(sine)" from the list, tick "Show", the reference waveform will appear on the screen. The object name and relevant information will be displayed on the top left. You can continue to choose another reference waveform to display. Click "Remove all" to clear all reference waveforms on the screen.

If the chosen object has no stored waveform, it will display "No Saved" below.



## Pause&Export

Export the waveform into a file in specified format according to current record length. You can choose bin, txt, csv, xls as the format. You can also click  icon on the user interface to save it in the format specified in menu.

## Self Cal

The self-calibration can make the oscilloscope reach the optimum condition rapidly to obtain the most accurate measurement value. You can carry out this application program at any time. This program must be executed whenever the change of ambient temperature is 5°C or over. Before performing a self-calibration, disconnect all probes or wires from the input connector. After everything is ready, click "Self Cal".

## Default

Click "Default" to call out the factory settings. You can also click  icon on the user interface.

## Help

Open this help document. You can press F1 as shortcut key.

## Network

The oscilloscope could be connected to a PC via LAN port. For more details, see [16.Use LAN Port](#).

## Tips Window

Choose a label among "Channel", "Capture&Period" or "Trigger" to view the guide for the new users.

Click anywhere in the help window to turn page.

If you do not want to display the guide automatically when running the software, check "Don't show again".

## About

Display Version, Serial Number and Company website. Press "Update" button to detect update program on server.

## Sync Trigger

Control the function of the port 5 in [Ports of the Oscilloscope](#).

Trigger In: Input the trigger signal synchronously

Trigger Out: Output the trigger signal synchronously

Pass/Fail: Output high level when pass, output low level when fail.

## 15.How to Use Executive Buttons

Executive Buttons include **AutoSet** , **Run/Stop** , **Single Trigger** . See 7, 8, 9 in [II. User Interface](#).

### AutoSet:



It's a very useful and quick way to apply a set of pre-set functions to the incoming signal, and display the best possible viewing waveform of the signal and also works out some measurements for user as well.

The details of functions applied to the signal when using **AutoSet** are shown as the following table:

Function Items	Setting
Acquisition Mode	Current
Vertical Coupling	DC
Vertical Scale	Adjust to the proper division.
Horizontal Level	Middle
Horizontal Sale	Adjust to the proper division
Trigger Type	Current
Trigger Source	Show the minimum number of channels.
Trigger Coupling	Current
Trigger Slope	Current
Trigger Level	Mid-point Setting
Trigger Mode	Edge
Display Format	YT

**Run/Stop:** Enable or disable sampling on input signals.

**Single Trigger:** You can set the trigger mode as single directly, so when trigger occurs, acquire one waveform then stop.

#### Keyboard Shortcuts

**Enter:** Auto set  
**Space:** Run/Stop

## 16. Use LAN Port

Using the LAN port, the oscilloscope could be connected to a PC directly or through a router. Below introduces these two kind of connection methods.

### Connect directly via a LAN cable

#### 1. View the network parameters of the computer

View the IP address of the computer to connect to. Assume the IP address is 192.168.1.71.

#### 2. Set the network parameters of the oscilloscope

(1) **Connect via USB and enter the menu:** Use the supplied USB cable to connect the oscilloscope with a PC through their USB ports.

After connecting successfully, click  to show Function menu, choose "Utility", click "Network".

(2) **Set IP and port of the oscilloscope:** In Network menu, click "OK" to enter MachineNetSetting.


Choose the oscilloscope to be connected from the list. If it's not in the list, click "Refresh" to refresh the list.

Set IP, the first three bytes should be same as the IP address of the computer in step 1, the last byte should be different. Here, we set it to 192.168.1.72. The range of the port value is 0~4000, here we set it to 3000.



(3) Click "Rework" to restart the oscilloscope.

### 3. Set the network parameters of the software

- (1) **Supply power:** Disconnect the USB cable from the computer. Connect it with the AC-DC adapter. Plug the adapter into an electrical outlet to power the oscilloscope.
- (2) **Connection:** Plug in the LAN line to the LAN port of the oscilloscope; plug the other end into the LAN interface of the computer.
- (3) **Set parameters in menu:** Click  to show Function menu, choose "Utility", click "Network". Set **IP** and **Port** to the same value of the oscilloscope in step 2.

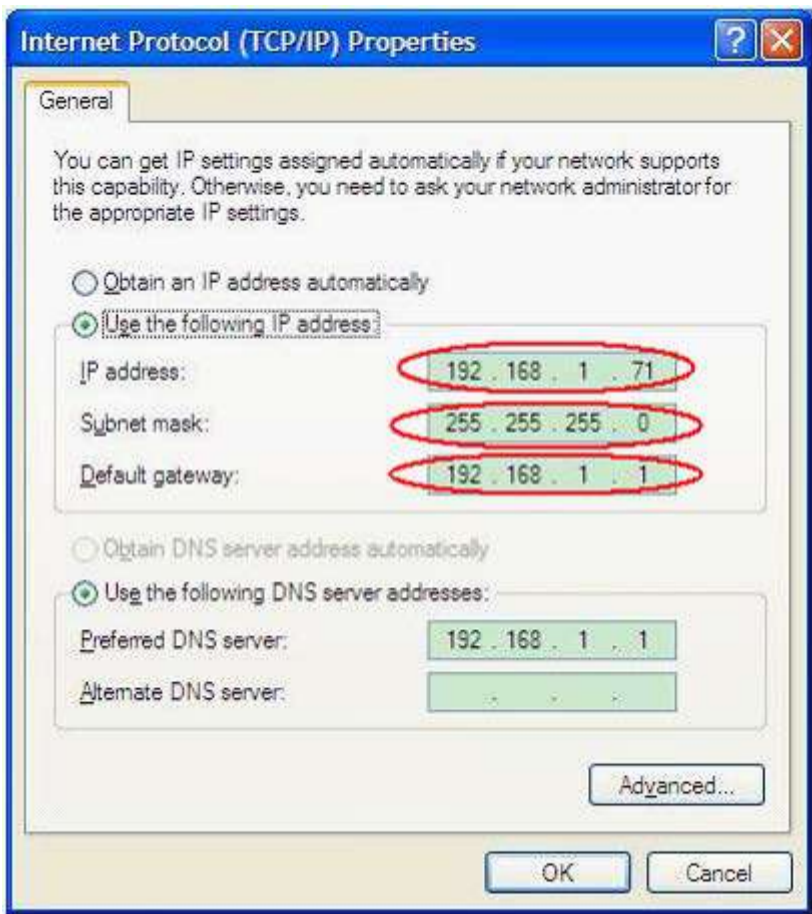


(4) Click "Connect".

## Connect through a router

### 1. View the network parameters of the computer

View the network parameters of the computer to connect to. The Default gateway and Subnet mask should be set according to the router. Assume the parameters are as below:  
 IP address: 192.168.1.71  
 Subnet mask: 255.255.255.0  
 Default gateway: 192.168.1.1



## 2. Set the network parameters of the oscilloscope

- (1) **Connect via USB and enter the menu:** Use the supplied USB cable to connect the oscilloscope with a PC through their USB ports.

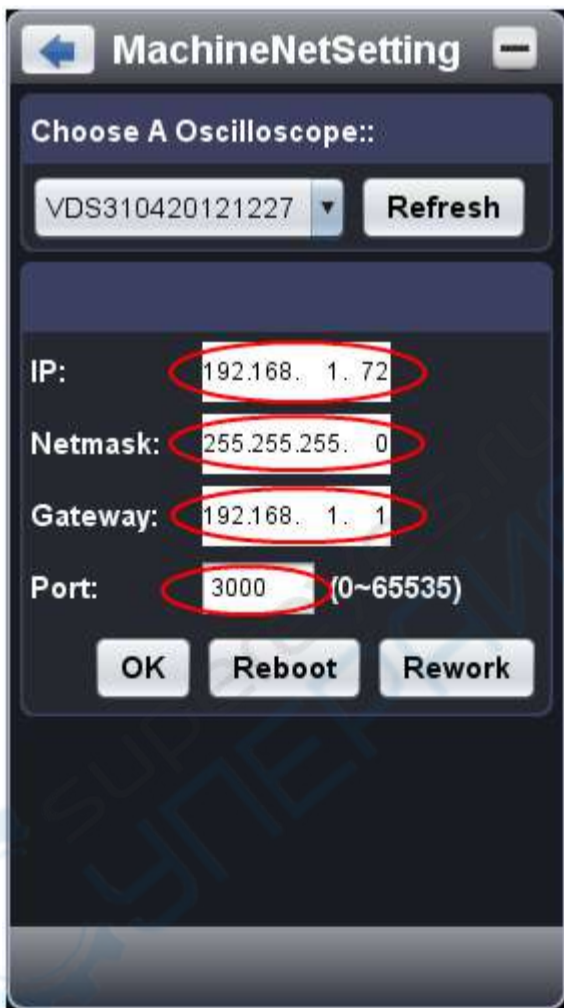
After connecting successfully, click  to show Function menu, choose "Utility", click "Network".

- (2) **Set the network parameters of the oscilloscope:** In Network menu, click "OK" to enter MachineNetSetting.

Choose the oscilloscope to be connected from the list. If it's not in the list, click "Refresh" to refresh the list.

Set IP, the first three bytes should be same as the IP address of the computer in step 1, the last byte should be different. Here, we set it to 192.168.1.72. The range of the port value is 0~4000, here we set it to 3000.

The Net mask and Gateway should be set according to the router.




- (3) Click "Rework" to restart the oscilloscope.

## 3. Set the network parameters of the software

- (1) **Supply power:** Disconnect the USB cable from the computer. Connect it with the AC-DC adapter. Plug the adapter into an electrical outlet to power the oscilloscope.

- (2) **Connect to the router:** Use a LAN cable to connect the oscilloscope with a router; the computer should be connected to the router too.

- (3) **Set parameters in menu:** Click  to show Function menu, choose "Utility", click "Network". Set **IP** and **Port** to the same value of the oscilloscope in step 2.



(4) Click "Connect".

#### IV. Technical Specifications

Unless otherwise specified, the technical specifications applied are for VDS series only, and Probes attenuation set as 10X. Only if the oscilloscope fulfills the following two conditions at first, these specification standards can be reached.

- This instrument should run for at least 30 minutes continuously under the specified operating temperature.
- If change of the operating temperature is up to or exceeds 5°C, do the "Self Cal" procedure in Utility menu (see [Self Cal](#)).

**Note:** VDS1022(I) represents two types of machines, they are VDS1022I and VDS1022. VDS1022I contains isolation, while VDS1022 does not contain isolation. The same as VDS2052(I).

Performance Characteristics		Instruction		
<b>Bandwidth</b>	VDS1022(I)	25MHz		
	VDS2052(I)	50MHz		
	VDS2062	60MHz		
	VDS3102	100MHz		
	VDS2064	60MHz		
	VDS3104	100MHz		
<b>Channel</b>	VDS1022(I) VDS2052(I) VDS2062 VDS3102	2 + 1	(*External)	
	VDS2064 VDS3104	4 + 1	(*External)	
<b>Acquisition</b>	Mode	Normal, Peak detect, Averaging		
	Sample rate (real time)	VDS1022(I)	Dual CH	100MS/s
			Single CH	100MS/s
		VDS2052(I)	Dual CH	250MS/s
			Single CH	250MS/s
		VDS2062	Dual CH	250MS/s
			Single CH	500MS/s
	VDS3102	Dual CH	500MS/s	
Single CH		1GS/s		
VDS2064	Four CH	125MS/s		

			Dual CH	250MS/s	
			Single CH	500GS/s	
		VDS3104	Four CH	250MS/s	
			Dual CH	500MS/s	
			Single CH	1GS/s	
<b>Input</b>	Input coupling	DC, AC, Ground			
	Input impedance	1MΩ±2%, in parallel with 10pF±5pF			
	Probe attenuation factor	1X, 10X, 100X, 1000X			
	Max. input voltage	VDS1022I VDS2052I	400V (PK-PK) (DC + AC PK-PK)		
		VDS1022 VDS2052 VDS2062 VDS3102 VDS2064 VDS3104	40V (PK-PK) (DC + AC PK-PK)		
	Channel –channel isolation	50Hz: 100 : 1 10MHz: 40 : 1			
Time delay between channel(typical)	150ps				
<b>Horizontal System</b>	Sampling rate range	VDS1022(I)	Dual CH	0.5S/s~100MS/s	
			Single CH	0.5S/s~100MS/s	
		VDS2052(I)	Dual CH	0.5S/s~250MS/s	
			Single CH	0.5S/s~250MS/s	
		VDS2062	Dual CH	0.5S/s~250MS/s	
			Single CH	0.5S/s~500MS/s	
		VDS3102	Dual CH	0.5S/s~500MS/s	
			Single CH	0.5S/s~1GS/s	
		VDS2064	Four CH	0.5S/s~125MS/s	
			Dual CH	0.5S/s~250MS/s	
	Single CH		0.5S/s~500MS/s		
	VDS3104	Four CH	0.5S/s~250MS/s		
		Dual CH	0.5S/s~500MS/s		
		Single CH	0.5S/s~1GS/s		
	Interpolation	(sin x)/x			
	Max Record length	VDS1022(I)	Dual CH	≤Max sampling rate	5K
			Single CH		
VDS2052(I)		Dual CH	≤Max sampling rate	5K	
		Single CH			
VDS2062		Dual CH	≤Max sampling rate	10M	
		Single CH			
VDS3102		Dual CH	≤Max sampling rate	10M	
		Single CH			
VDS2064		Four CH			
		Dual CH	≤Max sampling rate	5M	
	Single CH				
VDS3104	Four CH				
	Dual CH	≤Max sampling rate	5M		
	Single CH				

	Scanning speed (S/div)	VDS1022(I) VDS2052(I) VDS2062 VDS2064	5ns/div~100s/div, step by 1~2~5
		VDS3102 VDS3104	2ns/div~100s/div, step by 1~2~5
	Sampling rate / relay time accuracy	±100ppm	
	Interval(ΔT) accuracy (DC~100MHz)	Single: ±(1 interval time+100ppm×reading+0.6ns); Average>16: ±(1 interval time +100ppm×reading+0.4ns)	
<b>Vertical system</b>	A/D converter	VDS1022(I) VDS2052(I) VDS2062 VDS3102	8 bits resolution (2 Channels simultaneously)
		VDS2064 VDS3104	8 bits resolution (4 Channels simultaneously)
	Sensitivity	VDS1022(I) VDS2052(I) VDS2062 VDS2064	5mV/div~5V/div
		VDS3102 VDS3104	2mV/div~5V/div
	Displacement	VDS1022(I)	±10div
		VDS2052(I)	±10div
		VDS2062	±1V (5mV~100mV); ±50V (200mV~5V);
		VDS3102	±1V(2mV~100mV); ±50V(200mV~5V);
		VDS2064	±1V (5mV~100mV); ±50V (200mV~5V);
		VDS3104	±2V(2mV~200mV); ±50V(500mV~5V);
	Analog bandwidth	25MHz, 50MHz, 60MHz, 100MHz	
	Single bandwidth	Full bandwidth	
	Low Frequency	≥10Hz (at input, AC coupling, -3dB)	
	Rise time	VDS1022(I)	≤14ns (at input, Typical)
		VDS2052(I)	≤7.0ns (at input, Typical)
		VDS2062	≤5.8ns (at input, Typical)
		VDS3102	≤3.5ns (at input, Typical)
		VDS2064	≤5.8ns (at input, Typical)
		VDS3104	≤3.5ns (at input, Typical)
	DC accuracy	±3%	
DC accuracy (average)	Average≥16: ±(3% rdg + 0.05 div) for ΔV		
Waveform inverted ON/OFF			

<b>Measurement</b>	Cursor		$\Delta V$ and $\Delta T$ between cursors
	Automatic		Vpp, Vmax, Vmin, Vtop, Vbase, Vamp, Vavg, Vrms, Overshoot, Preshoot, Freq, Period, Rise Time, Fall Time, Delay A→B $\overline{f}$ , Delay A→B $\overline{T}$ , +Width, -Width, +Duty, -Duty
	Waveform Math		+, -, *, / ,FFT
	Lissajous figure	Bandwidth	Full bandwidth
Phase difference		$\pm 3$ degrees	
<b>Communication port</b>	VDS1022(I) VDS2052(I)	USB1.1	
	VDS2062 VDS3102 VDS2064 VDS3104	USB2.0, LAN (Optional)	
<b>Multi-function Interface</b>	Signal type	Synchronizing input, Synchronizing output, Pass/Fail output, External trigger input	
	Level standard	TTL	

\*External refers to trigger in, trigger output or Pass/Fail output.

**Trigger:**

Performance Characteristics		Instruction	
Trigger level range	Internal	$\pm 5$ div from the screen center	
Trigger level Accuracy (typical)	Internal	$\pm 0.3$ div	
	EXT	TTL	
Trigger displacement	According to Record length and time base		
Trigger Holdoff range	100ns~10s		
50% level setting (typical)	Input signal frequency $\geq 50$ Hz		
Edge trigger	slope	Rising, Falling	
Pulse trigger	Trigger condition	Positive pulse: >, <, = negative pulse: >, <, =	
	Pulse Width range	VDS1022(I) VDS2052(I) VDS2062 VDS3102 VDS2064 VDS3104	30ns~10s
Video Trigger	Modulation	Support standard NTSC, PAL and SECAM broadcast systems	
	Line number range	1-525 (NTSC) and 1-625 (PAL/SECAM)	
Slope Trigger	Trigger condition	Positive pulse: >, <, = negative pulse: >, <, =	

Performance Characteristics		Instruction	
	Time setting	VDS1022(I) VDS2052(I) VDS2062 VDS3102 VDS2064 VDS3104	30ns~10s
Alternate Trigger	Trigger on CH1	Edge, Pulse, *Video, Slope	
	Trigger on CH2	Edge, Pulse, *Video, Slope	

\*Video: In alternate trigger, only one channel at most can be set as Video mode.  
When VDS1022(I), in alternate trigger, only CH1 can be set as Video mode.

#### Output of the Probe Compensator

Performance Characteristics	Instruction	
Output Voltage (Typical )	VDS1022(I) VDS2052(I)	About 5V, with the Peak-to-Peak voltage $\geq 1M\Omega$ .
	VDS2062 VDS3102 VDS2064 VDS3104	About 3.3V, with the Peak-to-Peak voltage $\geq 1M\Omega$ .
Frequency (Typical )	Square wave of 1KHz	

#### Power

Mains Voltage	VDS1022(I) VDS2052(I)	5.0V/500mA
	VDS2062(L) VDS3102(L) VDS2064 VDS3104	5.0V/1A
Power Consumption	VDS1022(I) VDS2052(I)	<2.5W
	VDS2062(L) VDS3102(L) VDS2064 VDS3104	<5W

#### Environment

Temperature	Working temperature: 0 °C ~ 40 °C Storage temperature: -20 °C ~ 60 °C
Relative Humidity	$\leq 90\%$
Height	Operating: 3,000 m Non-operating: 15,000 m
Cooling Method	Natural convection

#### Mechanical Specifications

Dimension	VDS1022(I) VDS2052(I)	170mm× 120mm×18mm (L*H*W)
	VDS2062(L) VDS3102(L) VDS2064 VDS3104	190mm× 120mm×18mm (L*W*H)
Weight	About 0.26 kg	

#### Interval Period of Adjustment:

One year is recommended for the calibration interval period.