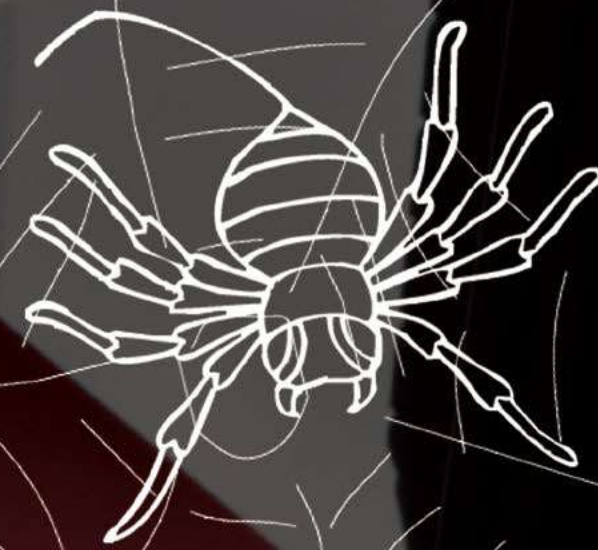




# INSTRUCTION MANUAL

There is no perfect machine, only you can make it perfect.  
You give it a variety of smart power,  
Let its take you  
Travel 3D print world



Reveal  
your personality  
*The original 3d printing is so simple*

TEVO 3D Electronic Technology Co., Ltd.



 **BLACK  
WIDOW**

# CONTENTS



## MECHANICAL PARTS

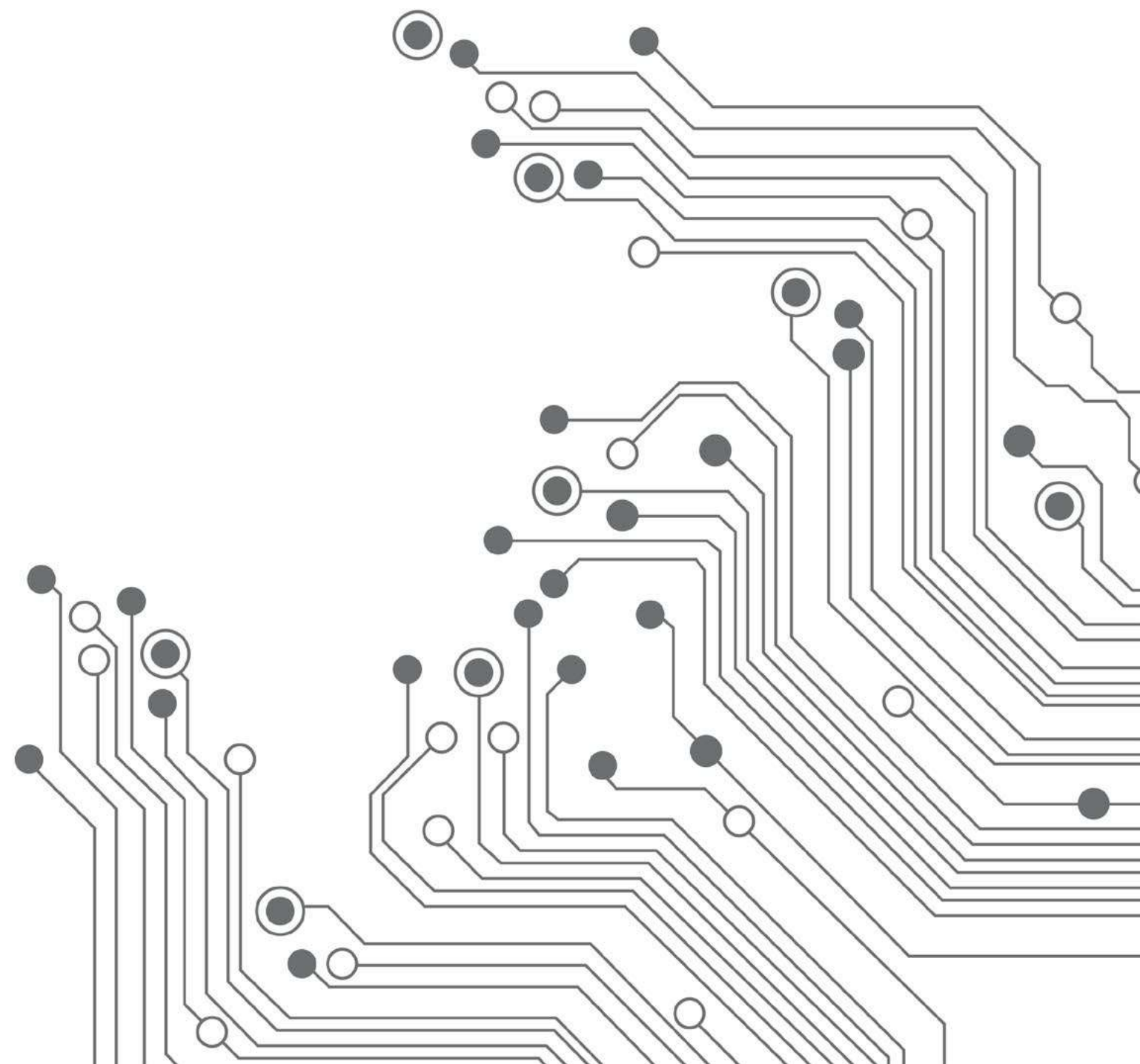
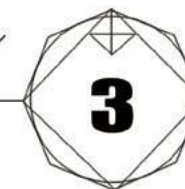
- 1 THE BOTTOM BRACKET INSTALLATION
- 3 Z AXIS MOVEMENT TRACK INSTALLATION
- 5 BED FRAME INSTALLATION
- 6 Y AXIS ASSEMBLY
- 10 X AXIS ASSEMBLY
- 15 AT THE TOP OF THE SCAFFOLD
- 19 THE X AXIS INSTALLATION
- 25 Z AXIS TRANSMISSION SET OF INSTALLATION
- 27 INSTALL THE HOT BED
- 29 DRAG CHAIN INSTALLATION
- 32 LIMIT ENDSTOP INSTALLATION

## THE MAIN BOARD BOX

- 34 CONTROL BOX INSTALLATION

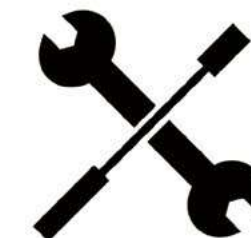


ABOUT US

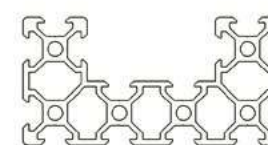




THE BOTTOM BRACKET INSTALLATION



**PARTS  
ARE READY**



➤ PROFILE 4080 \*1

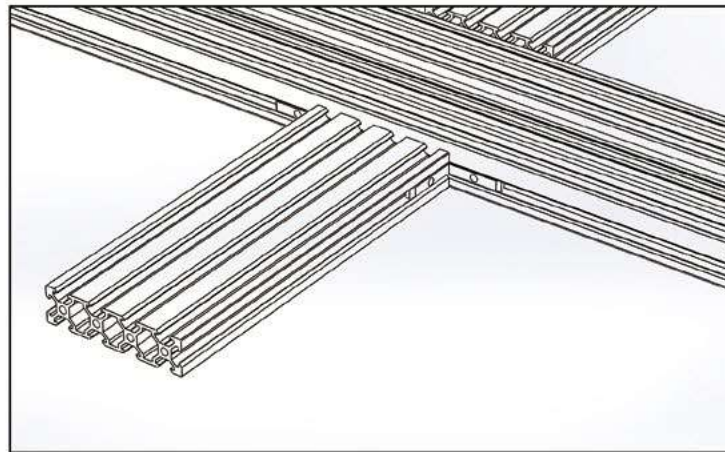
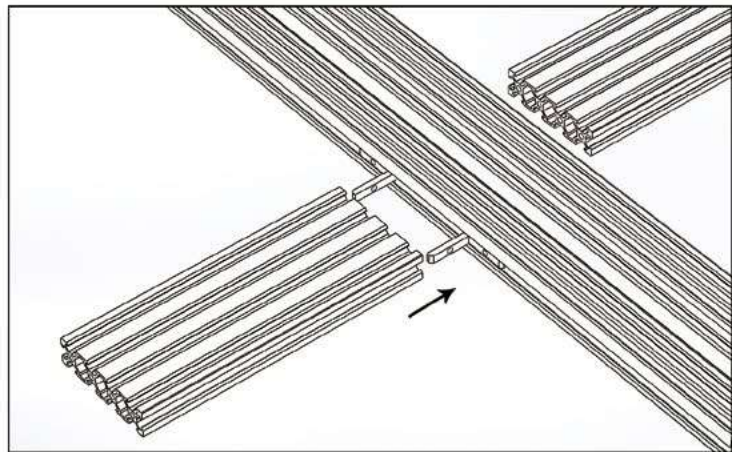
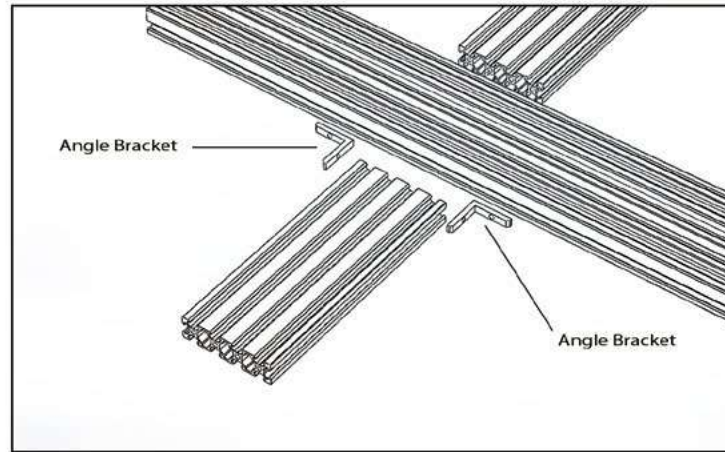
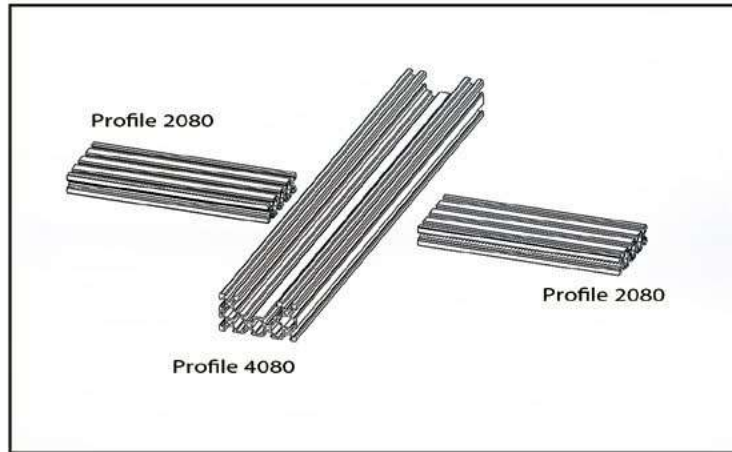


➤ PROFILE 2080 \*2



➤ ANGLE BRACKET \* 4

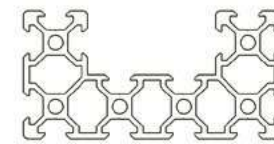
THE BOTTOM BRACKET INSTALLATION



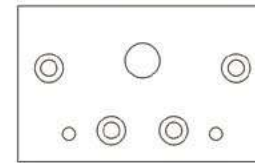
Z AXIS MOVEMENT TRACK INSTALLATION



PARTS ARE READY



➤ PROFILE 4080 \*2



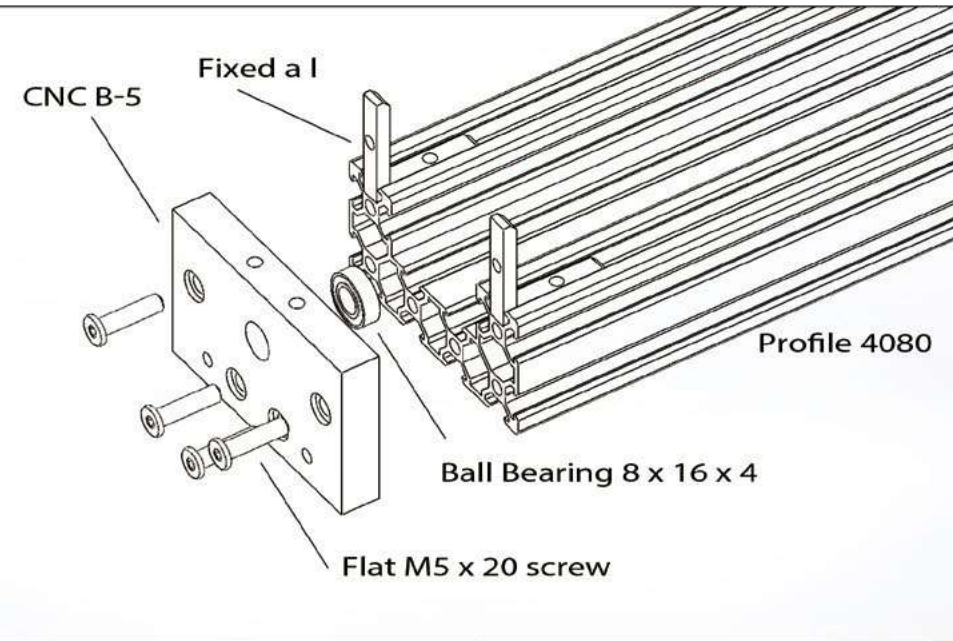
➤ CNC B-5  
CNC B-6



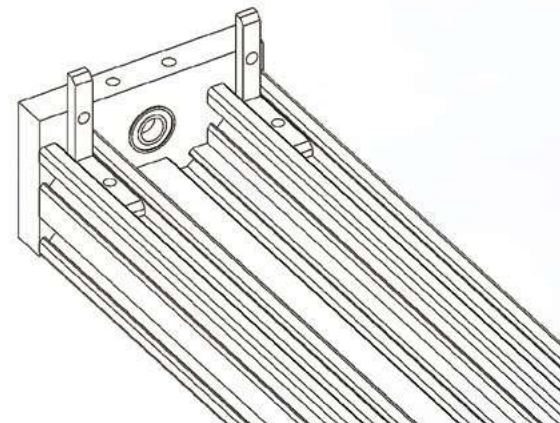
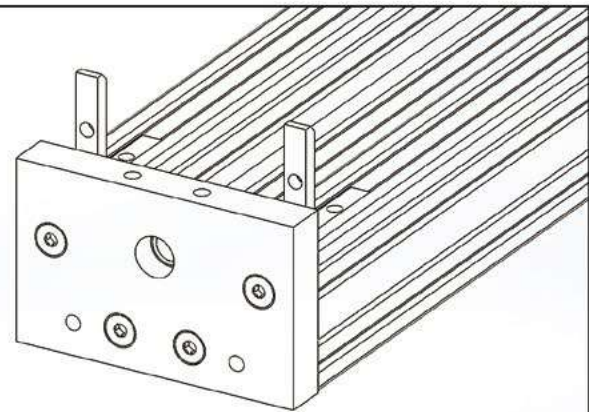
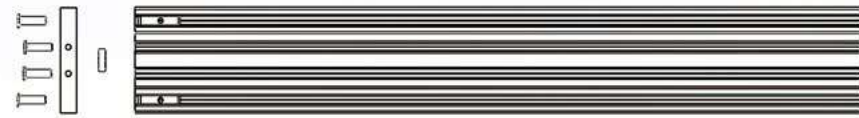
➤ FLAT M5 X 20 SCREW \* 8  
BALL BEARING 8 X 16 X 4 \* 2  
ANGLE BRACKET \* 4



Z AXIS MOVEMENT TRACK INSTALLATION



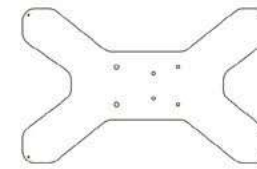
Repeat install a,  
a total of 2 Z axis



BED FRAME INSTALLATION



PARTS  
ARE READY

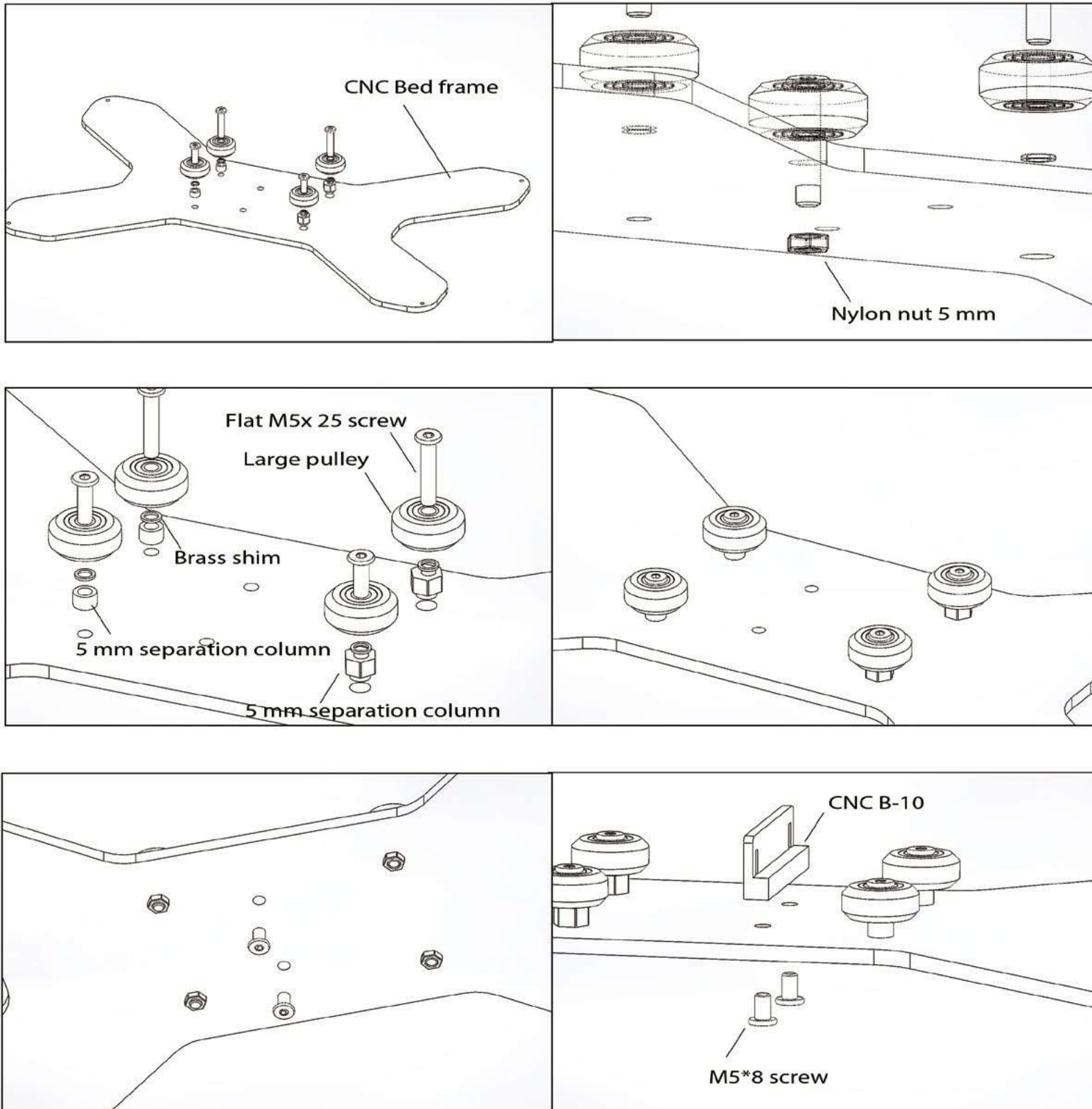


CNC Bed frame  
CNC B-10



Flat M5 x 25 screw \* 4  
5 mm separation column \*2  
Eccentric nut \*2  
Brass shim \*4  
Large pulley \* 4  
Nylon nut 5 mm\*4  
M5 \*8 screw\*2

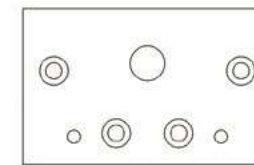
BED FRAME INSTALLATION



Y AXIS ASSEMBLY



PARTS ARE READY

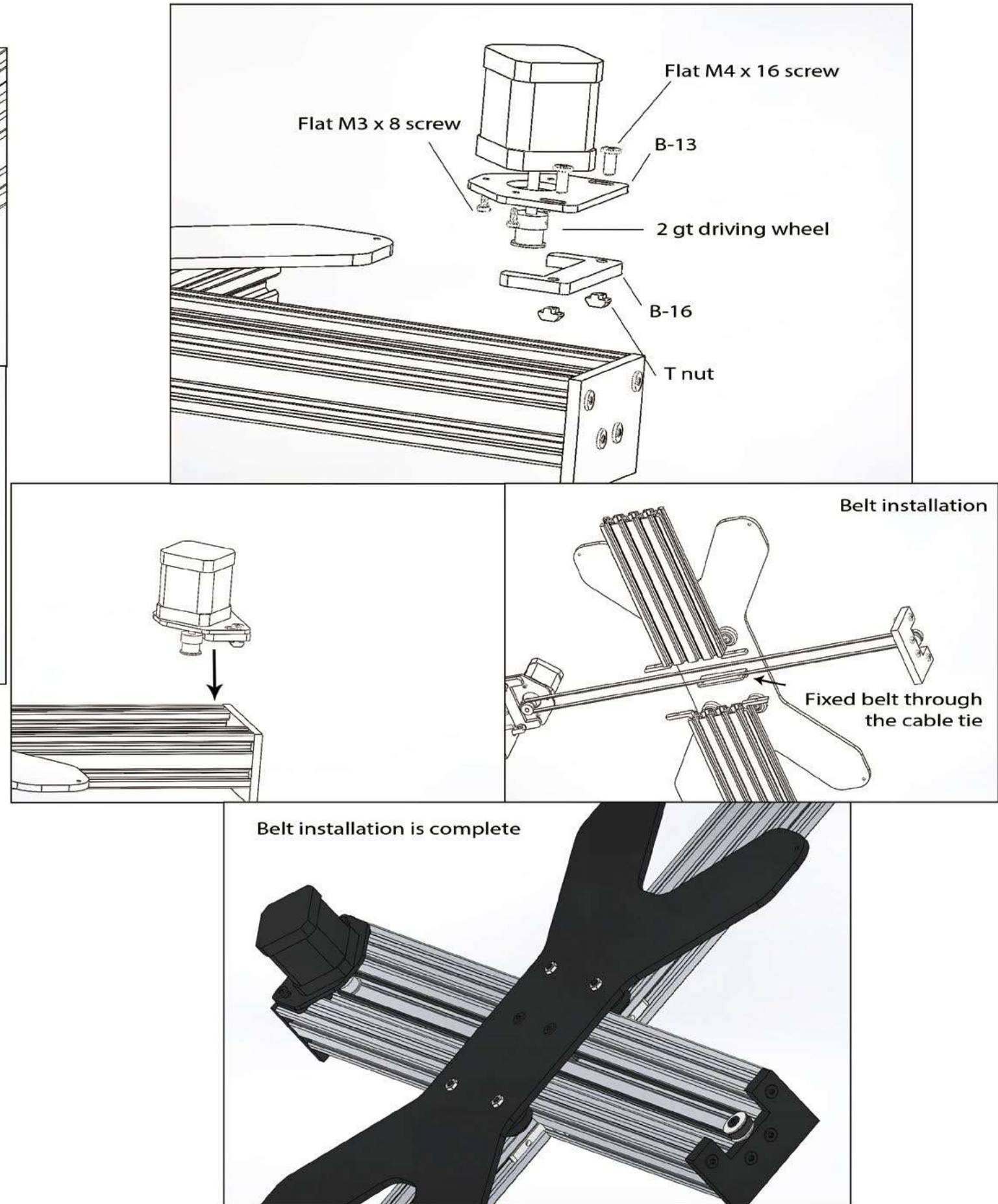
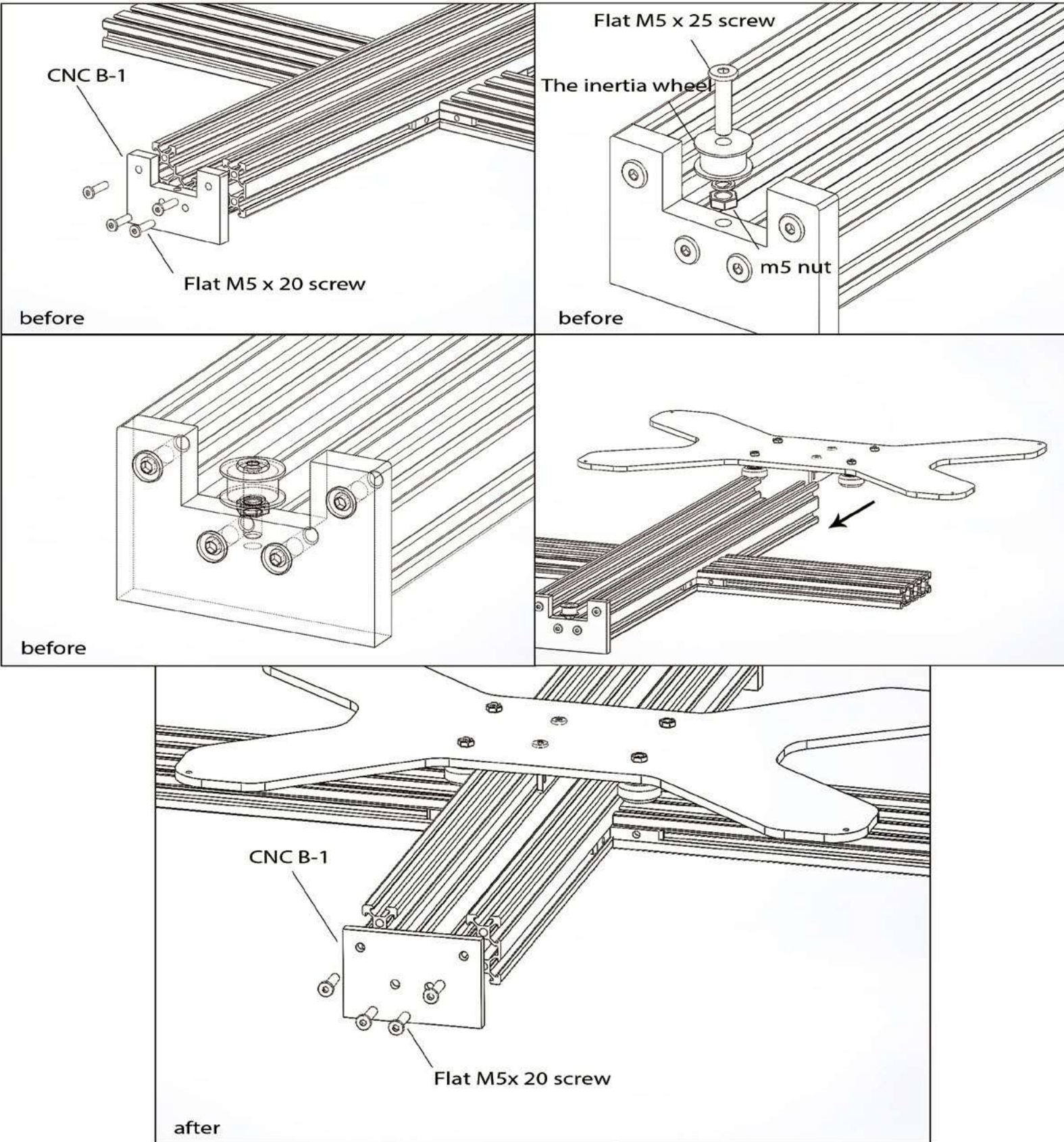


CNC B-1  
CNC B-2  
B-13  
B-16



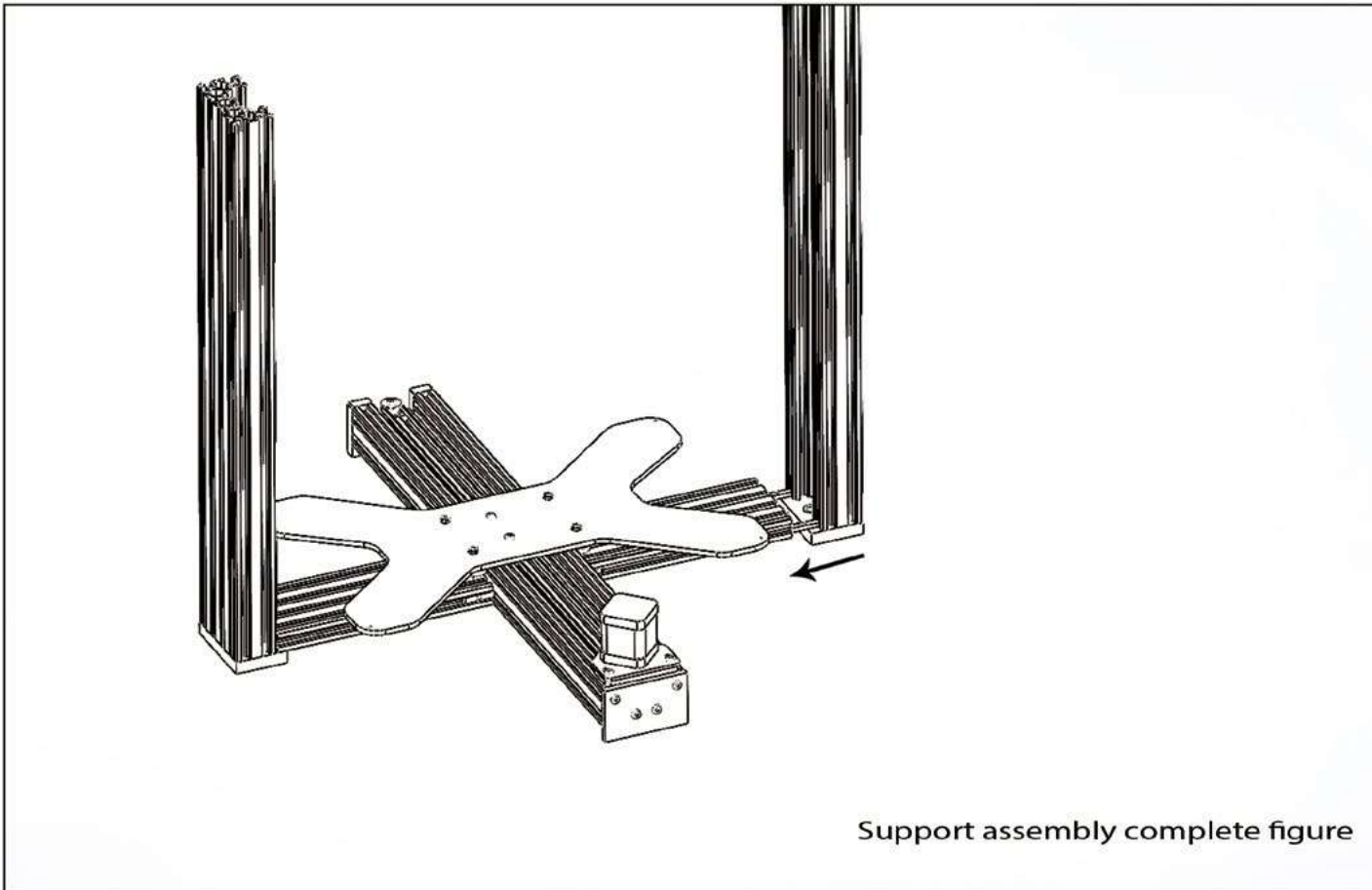
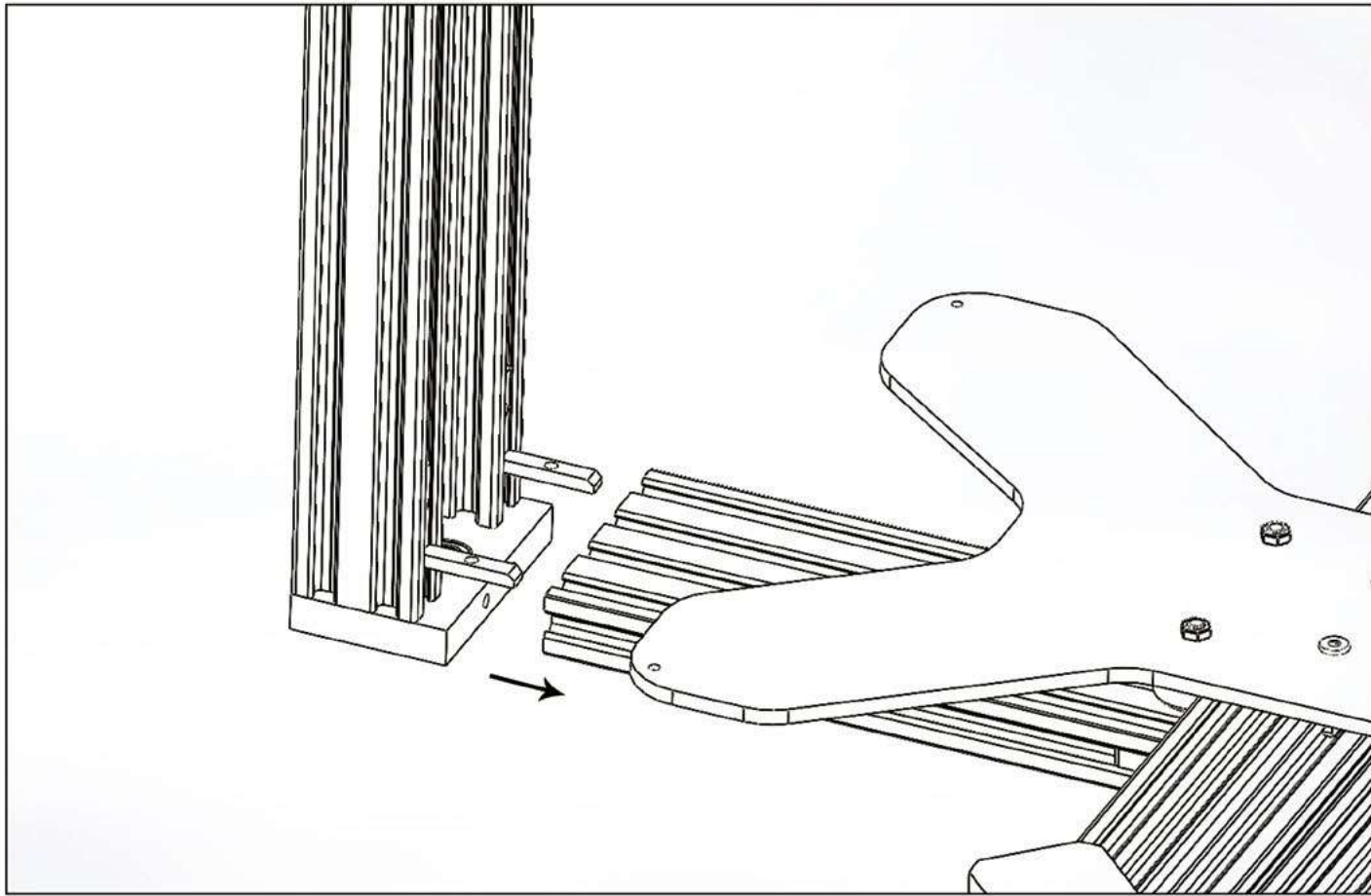
Flat M5 x 25 screw \* 1  
Flat M5 x 20 screw \* 8  
Flat M4 x 16 screw \* 2  
Flat M3 x 8 screw \* 3  
Eccentric nut \* 2  
Inertia wheel  
m5 nut \* 1  
T nut \* 2  
2 gt driving wheel







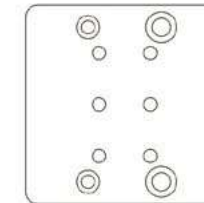
Y AXIS ASSEMBLY



X AXIS ASSEMBLY



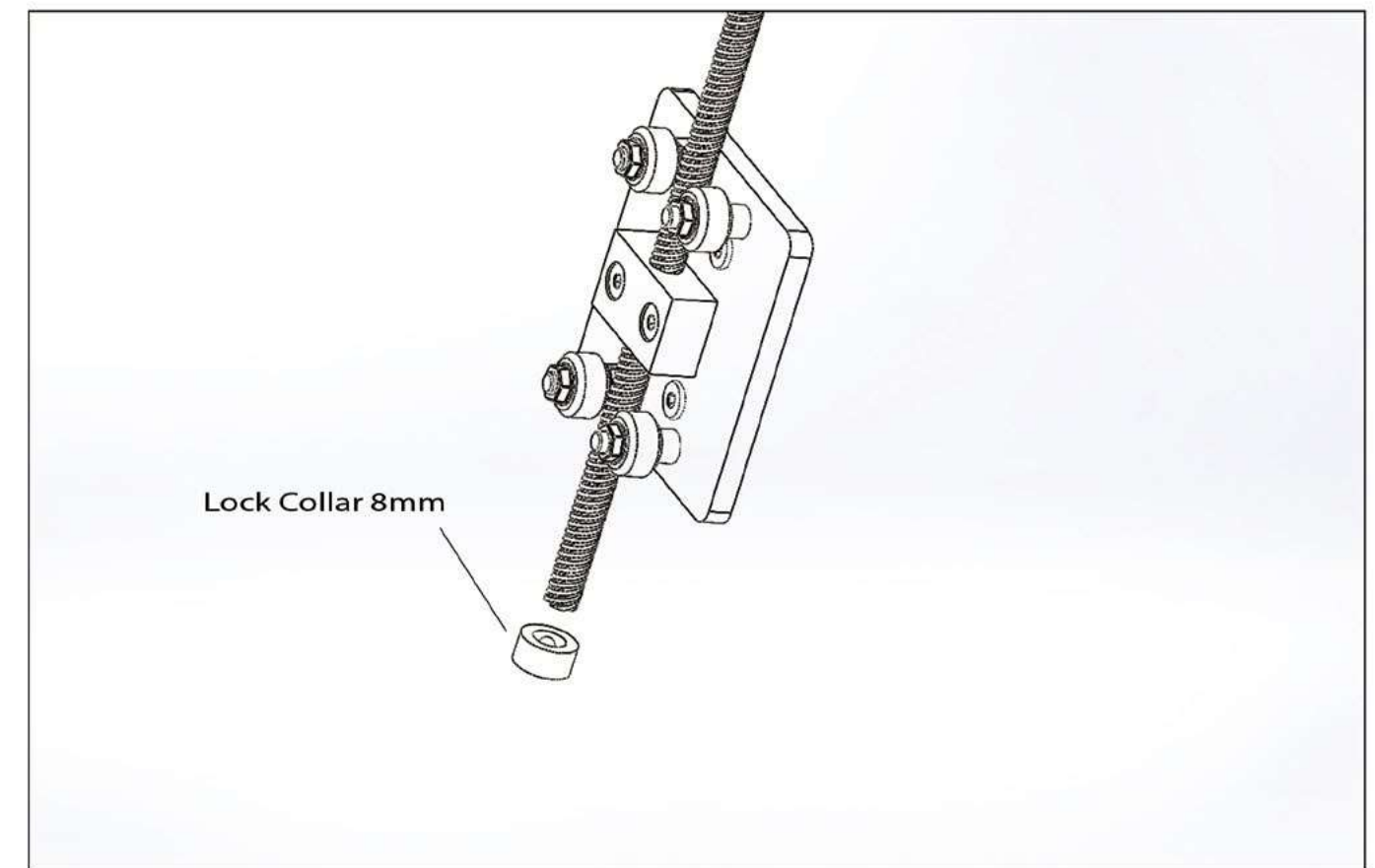
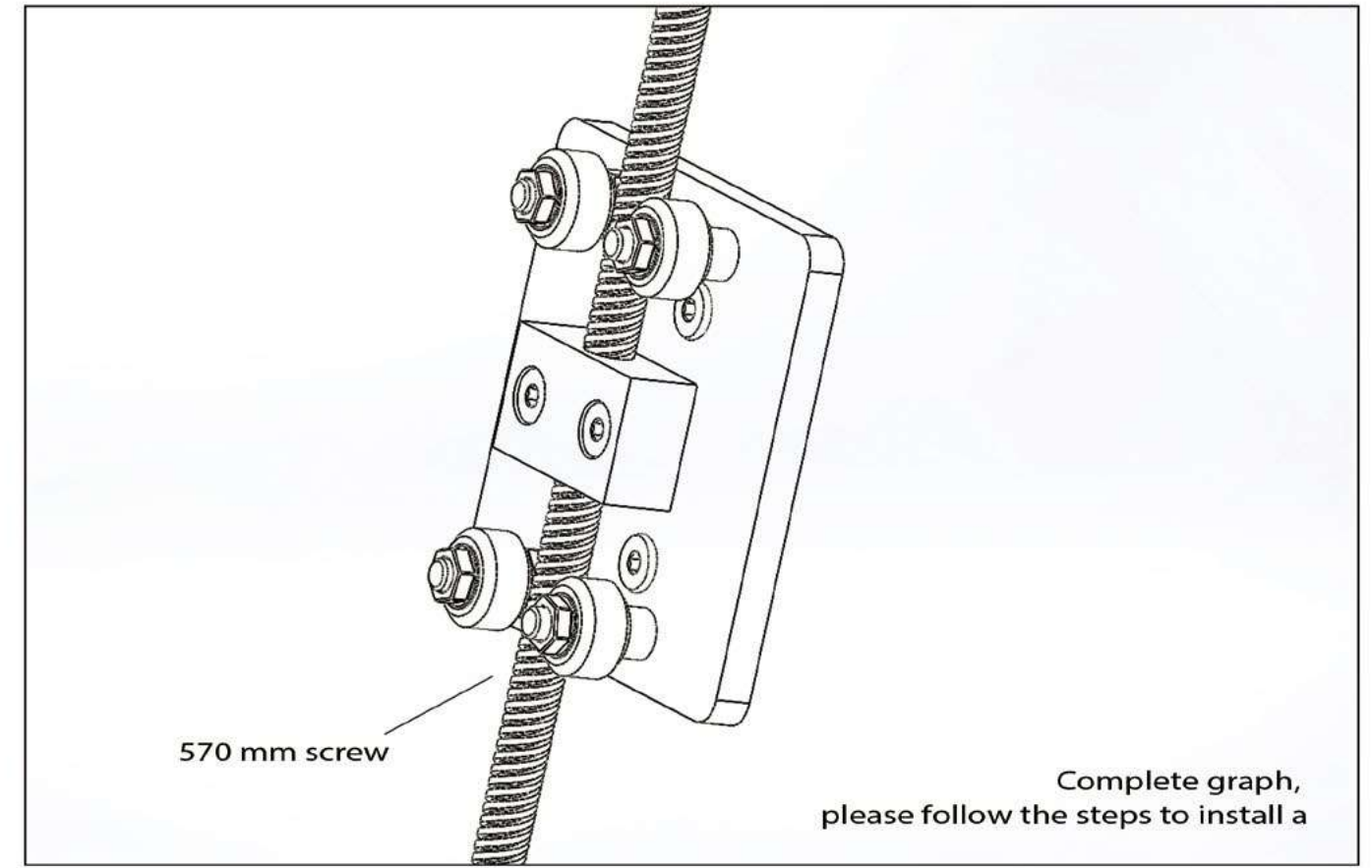
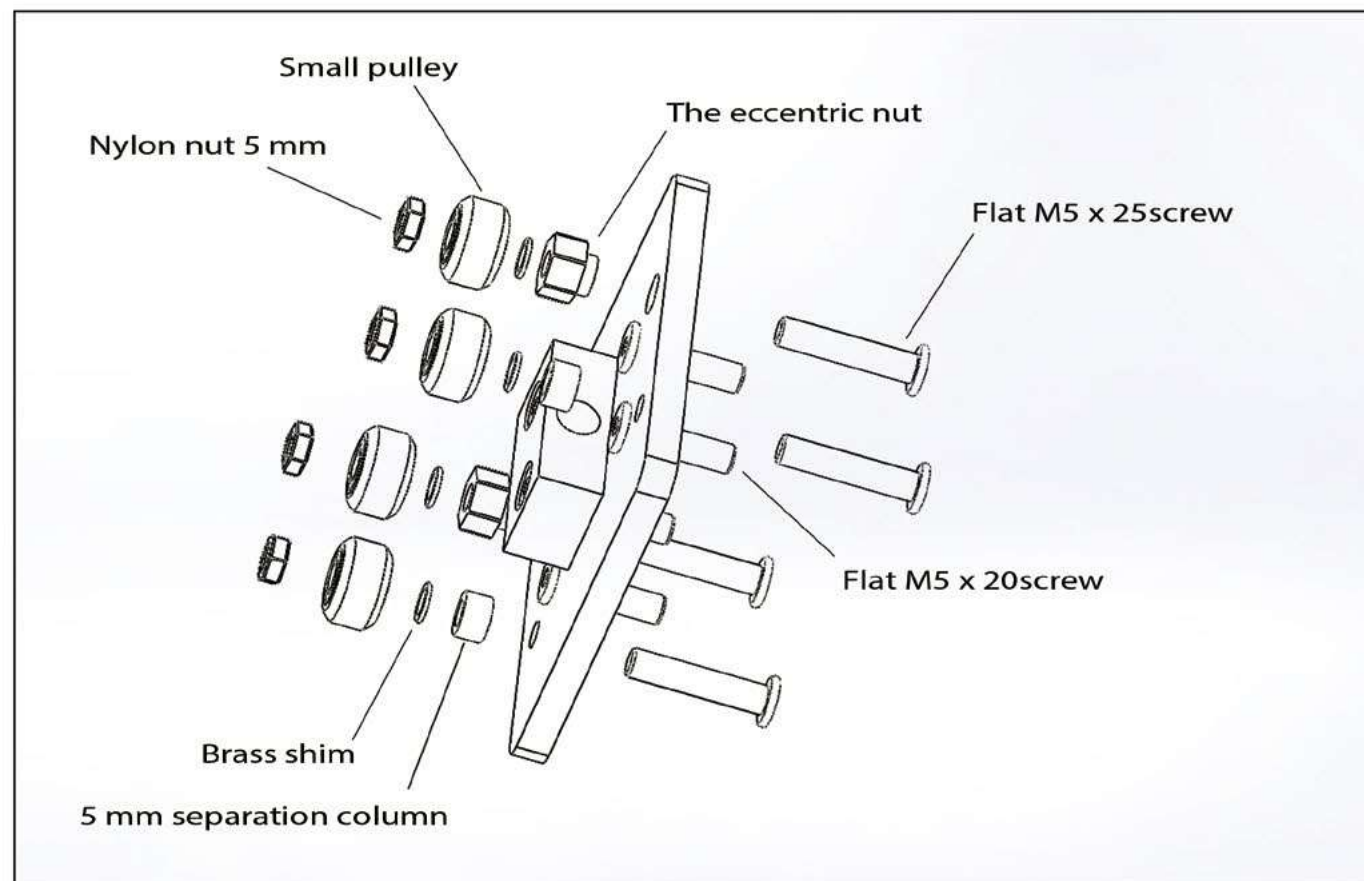
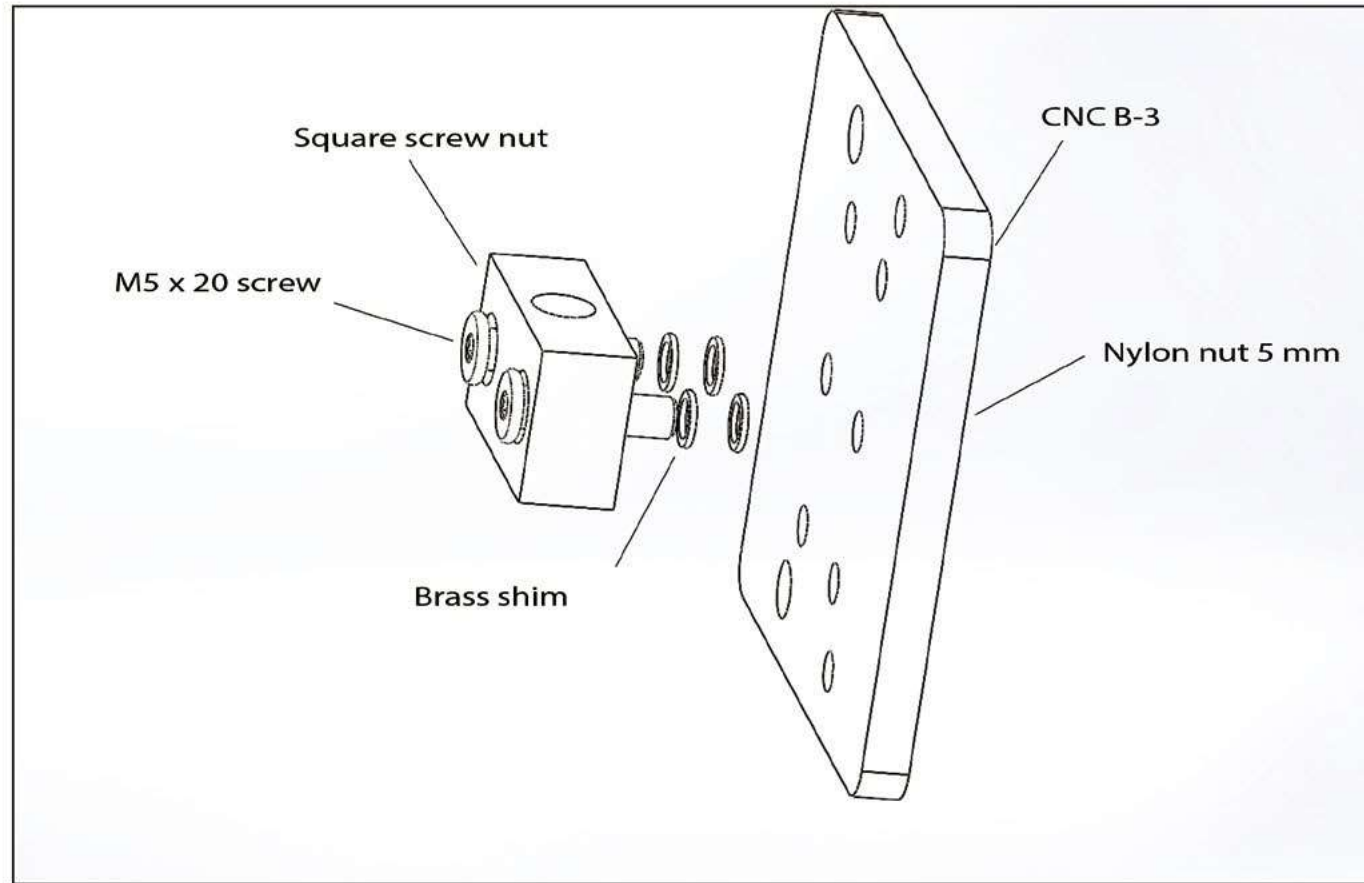
PARTS ARE READY



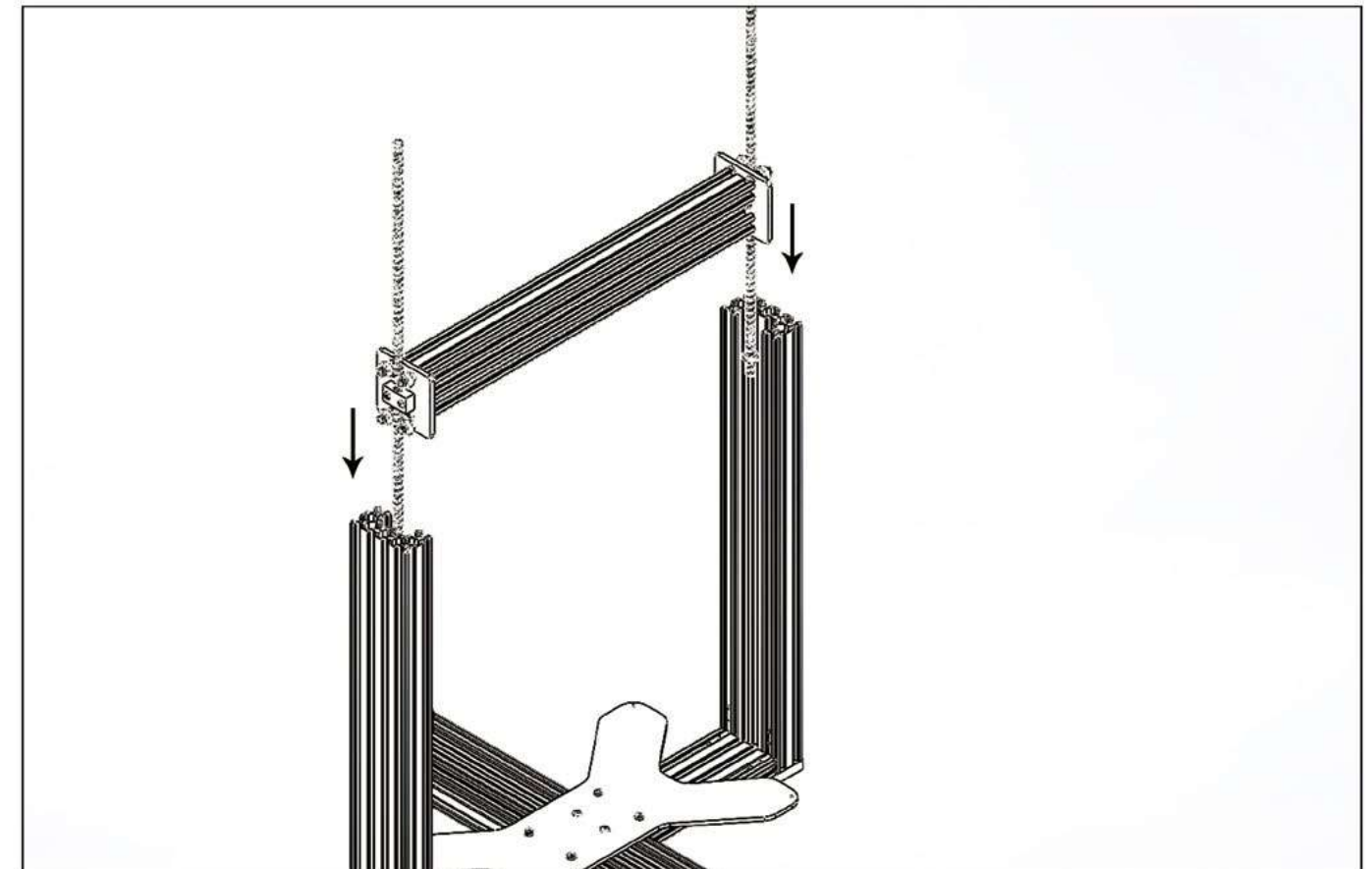
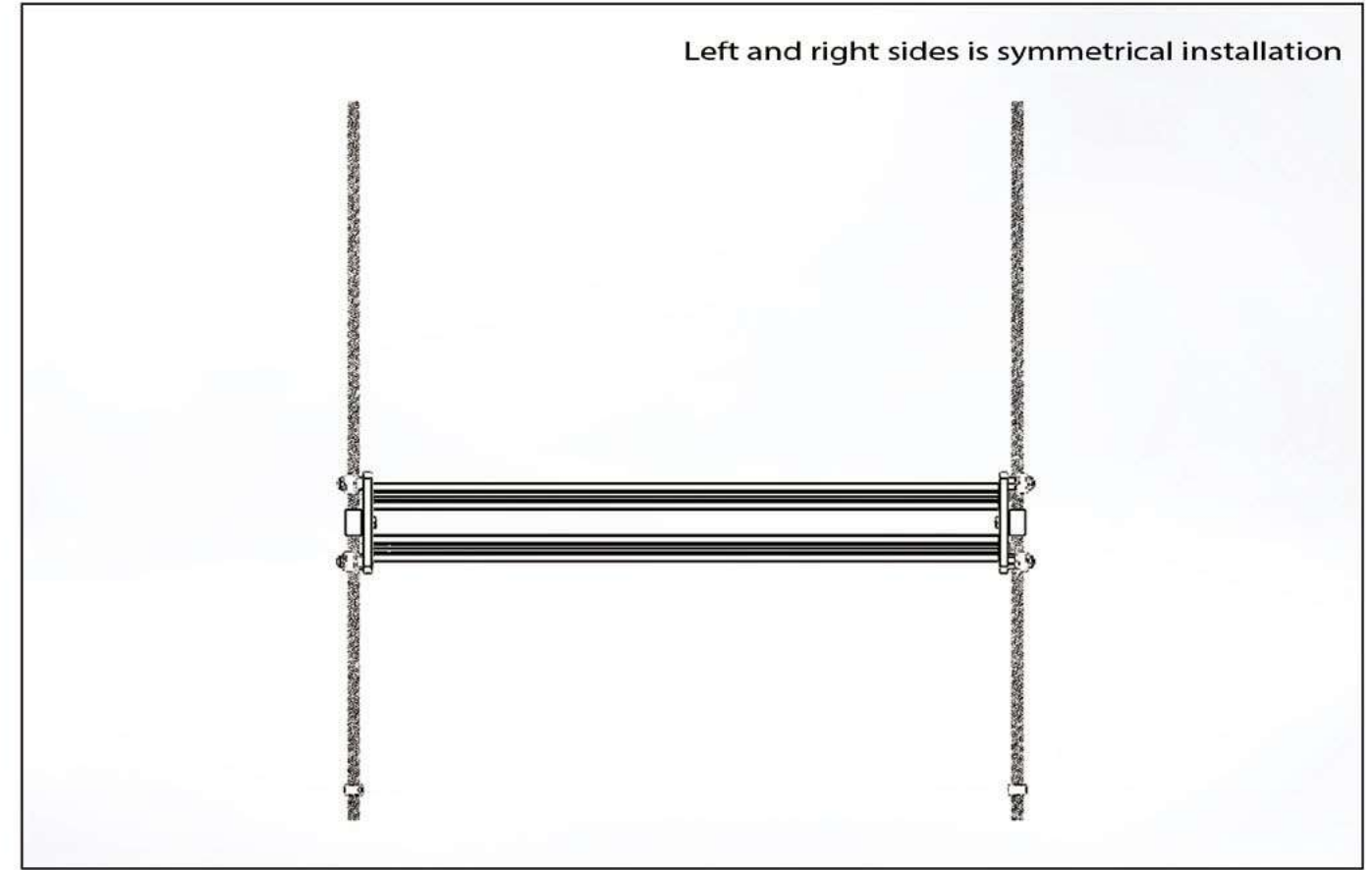
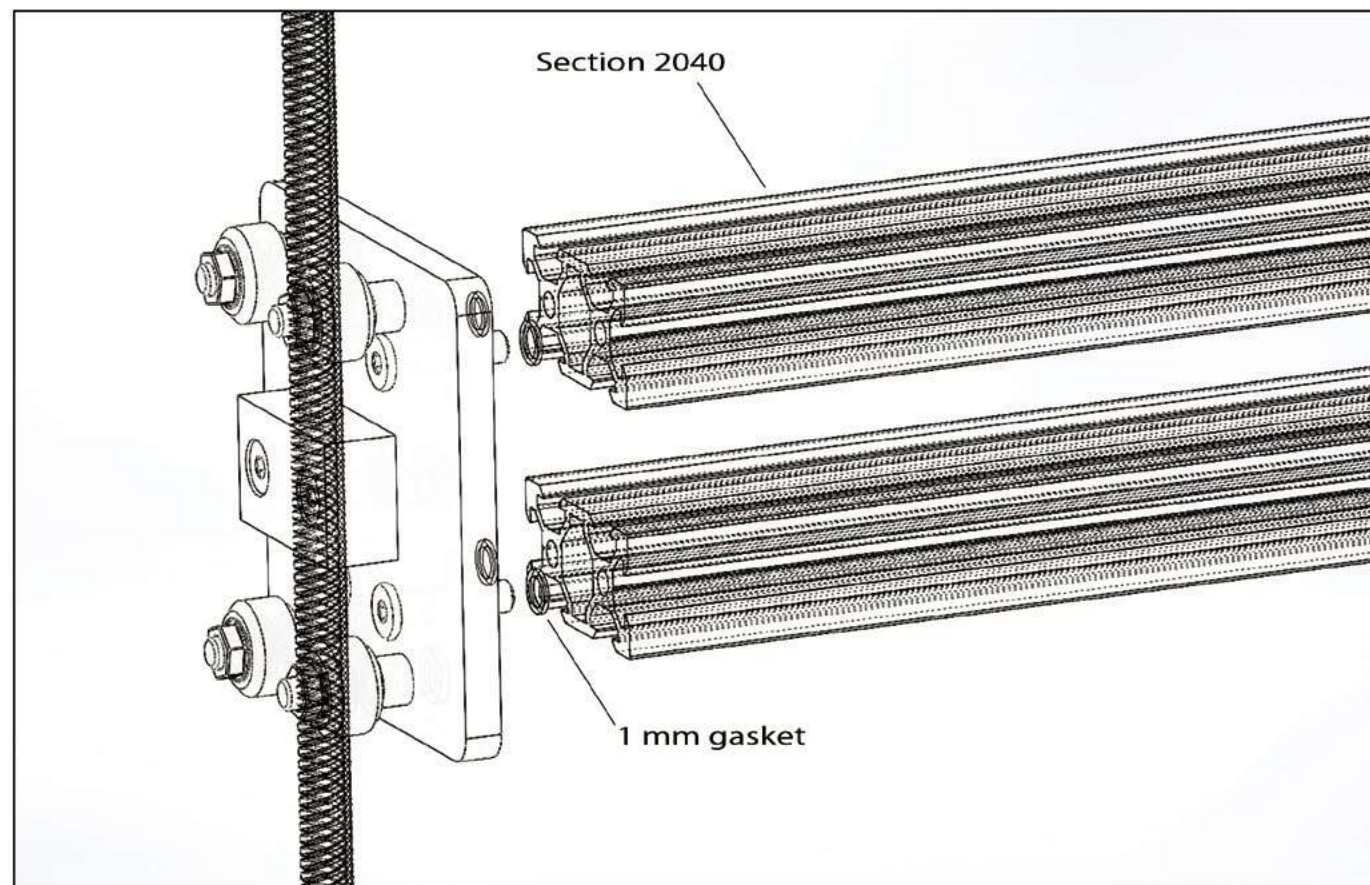
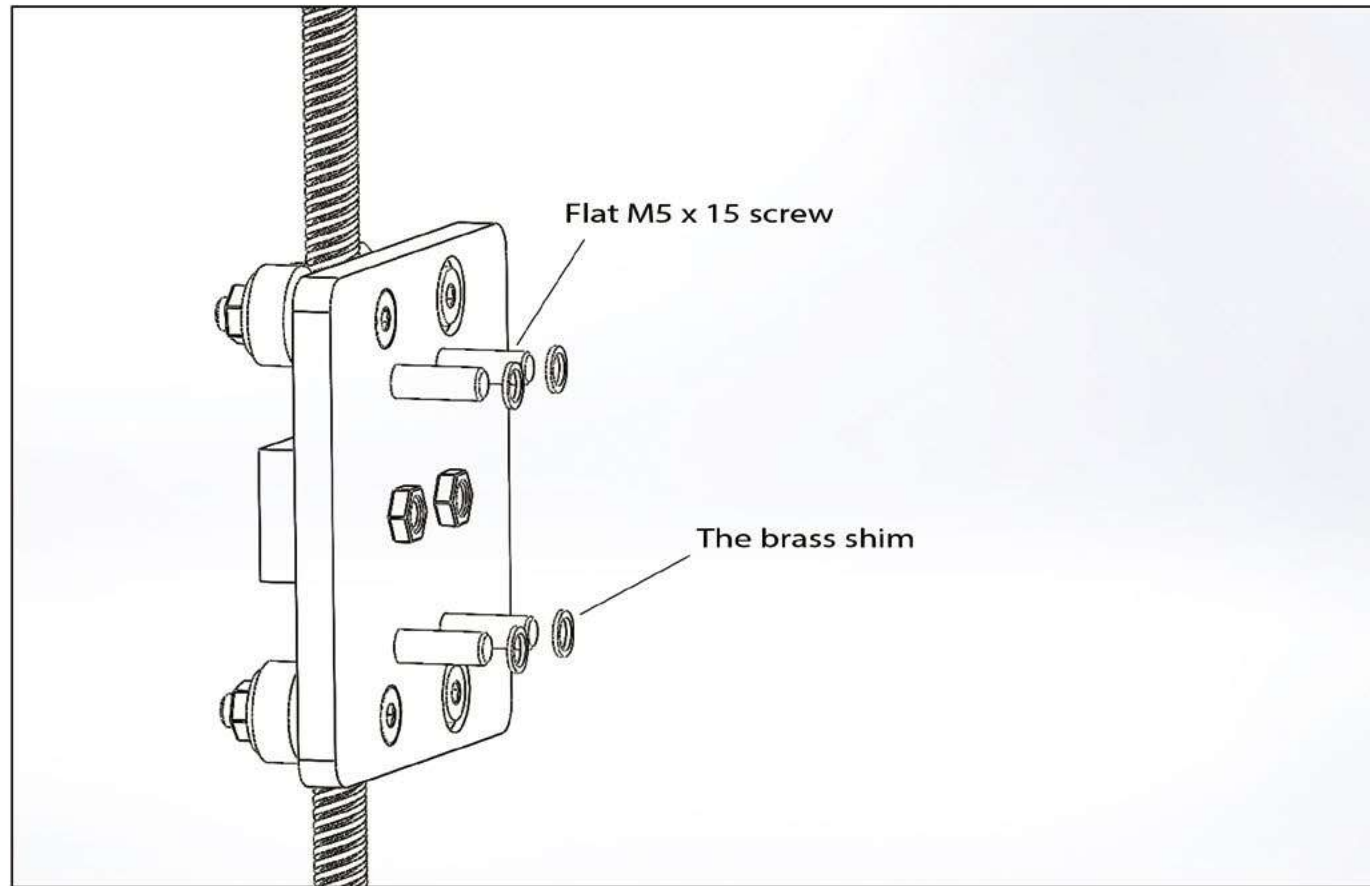
CNC B-3  
CNC B-4



- Flat M5 x 25 screw \* 12
- Flat M5 x 15 screw \* 8
- Eccentric nut \*4
- Small pulley \*8
- Nylon nut 5 mm \*12
- Brass shim \*16
- 1 mm gasket \*8
- 5 mm separation column \*4
- Square screw nut \*2
- 2 gt belt wheel \*2
- Ball Bearing 8 x 16 x 5 \*2
- 570 mm screw
- Lock Collar 8mm \*4

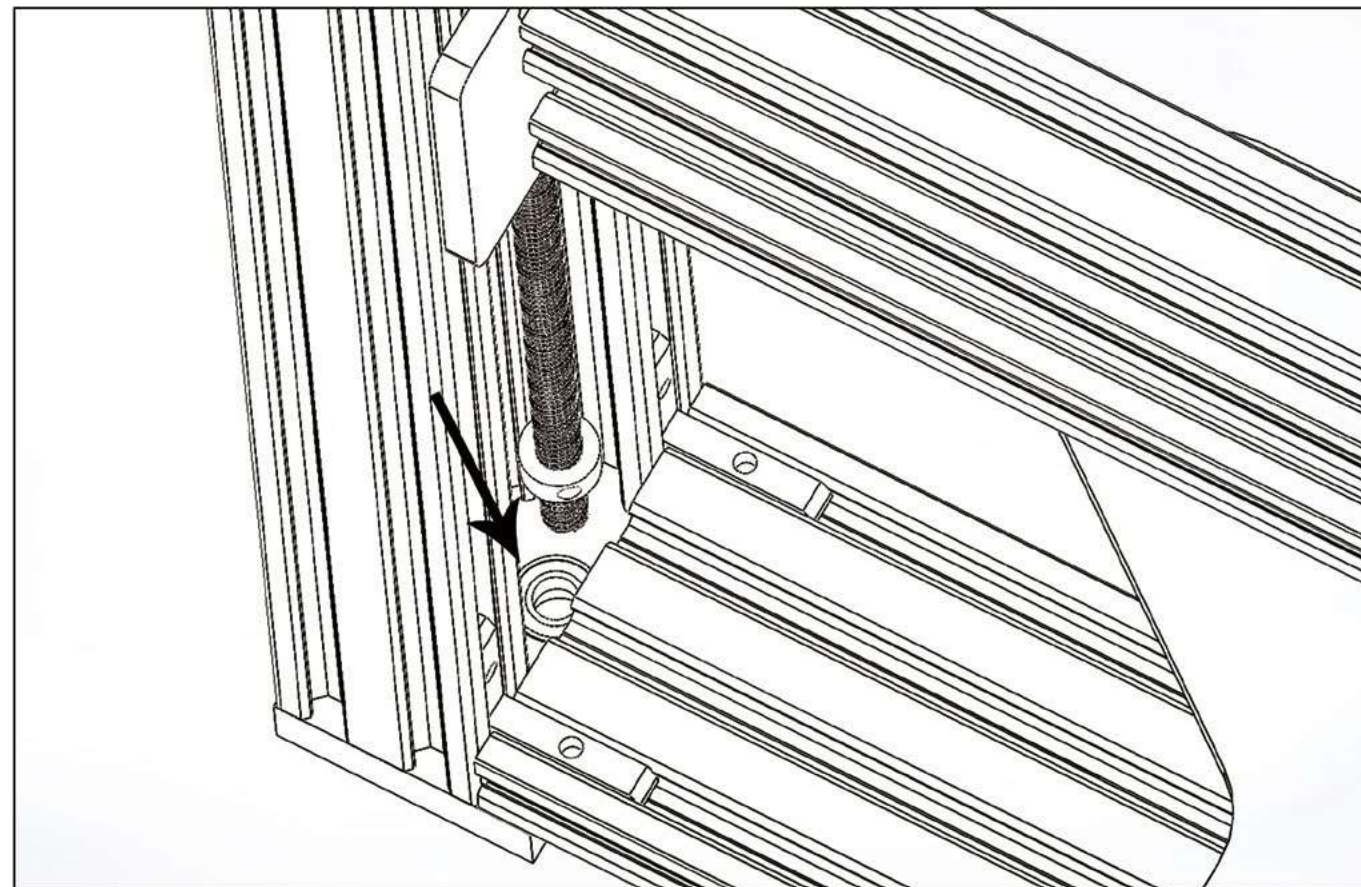
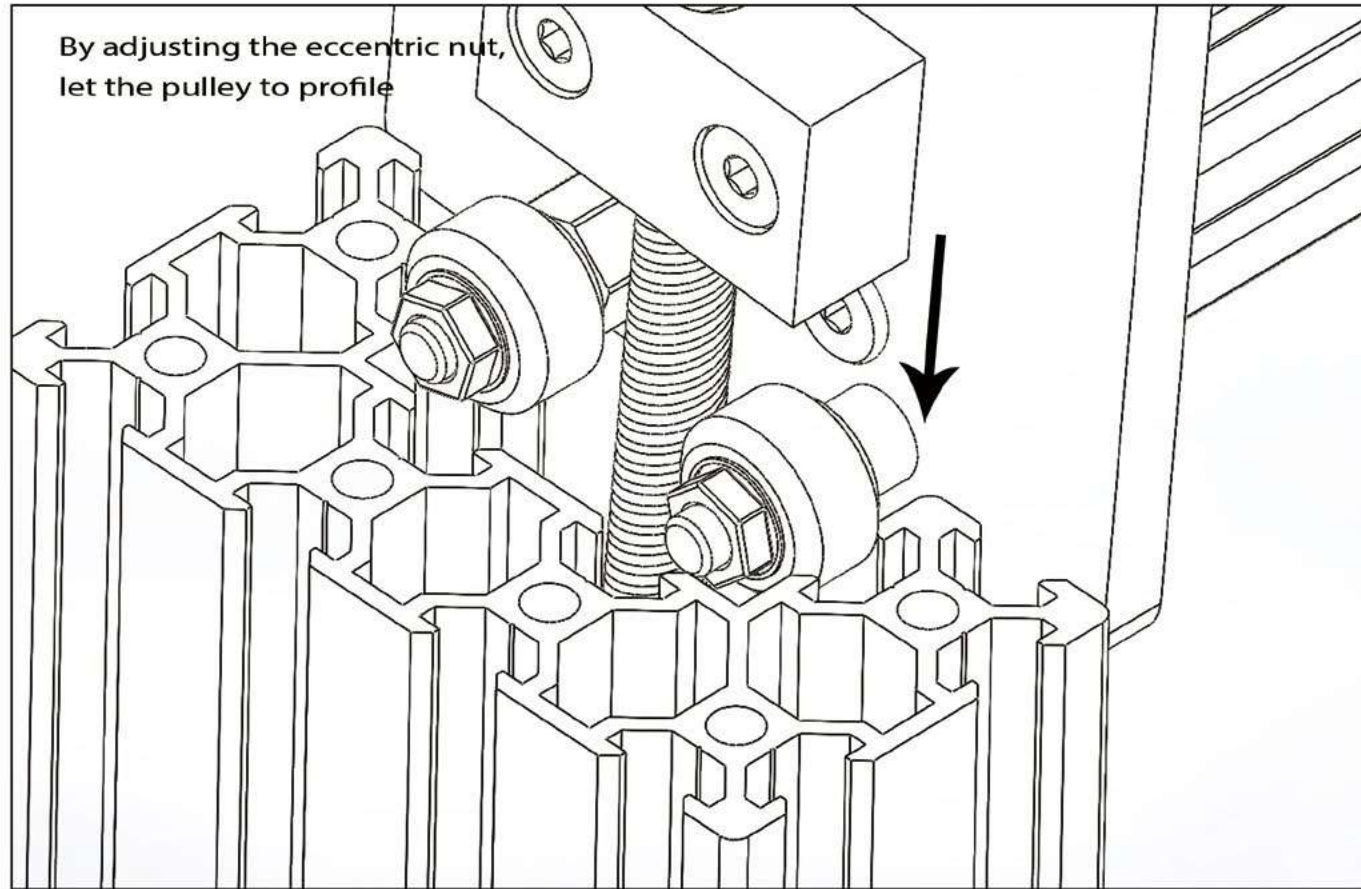








THE X AXIS ASSEMBLY INSTALLED



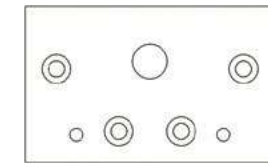
AT THE TOP OF THE SCAFFOLD



PARTS ARE READY



➤ PROFILE 2080



➤ CNC B-7  
CNC B-8

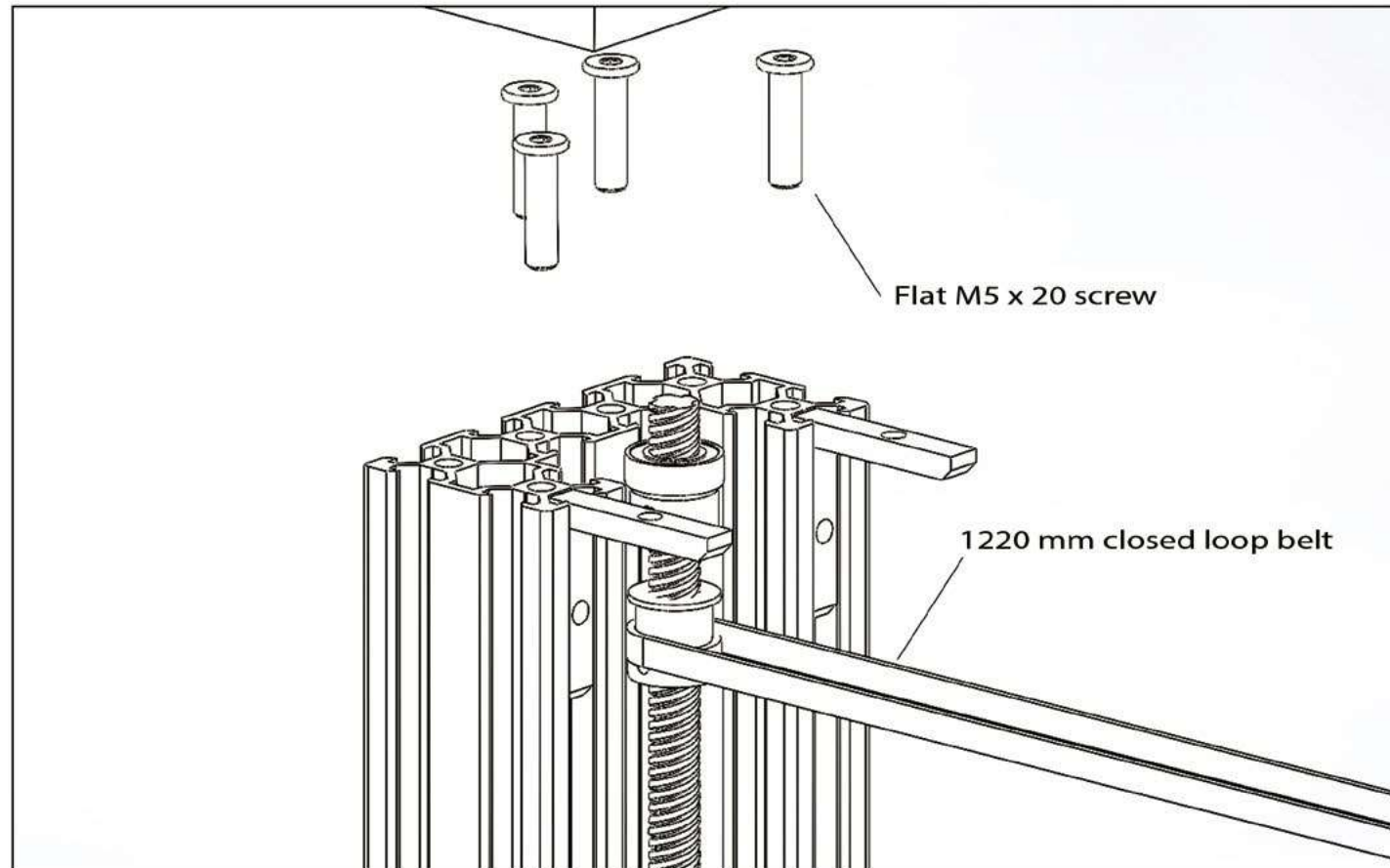
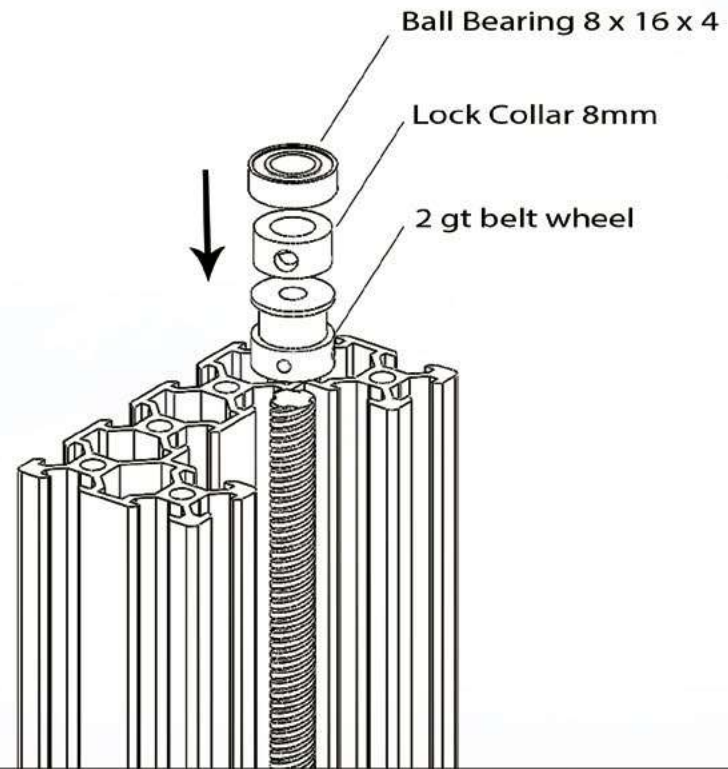


➤ Flat M5 x 20 screw \* 8  
2 gt belt wheel \*2  
Ball Bearing 8 x 16 x 4 \*2  
Lock Collar 8mm \*2  
Angle Bracket \*4  
1220 mm closed loop belt

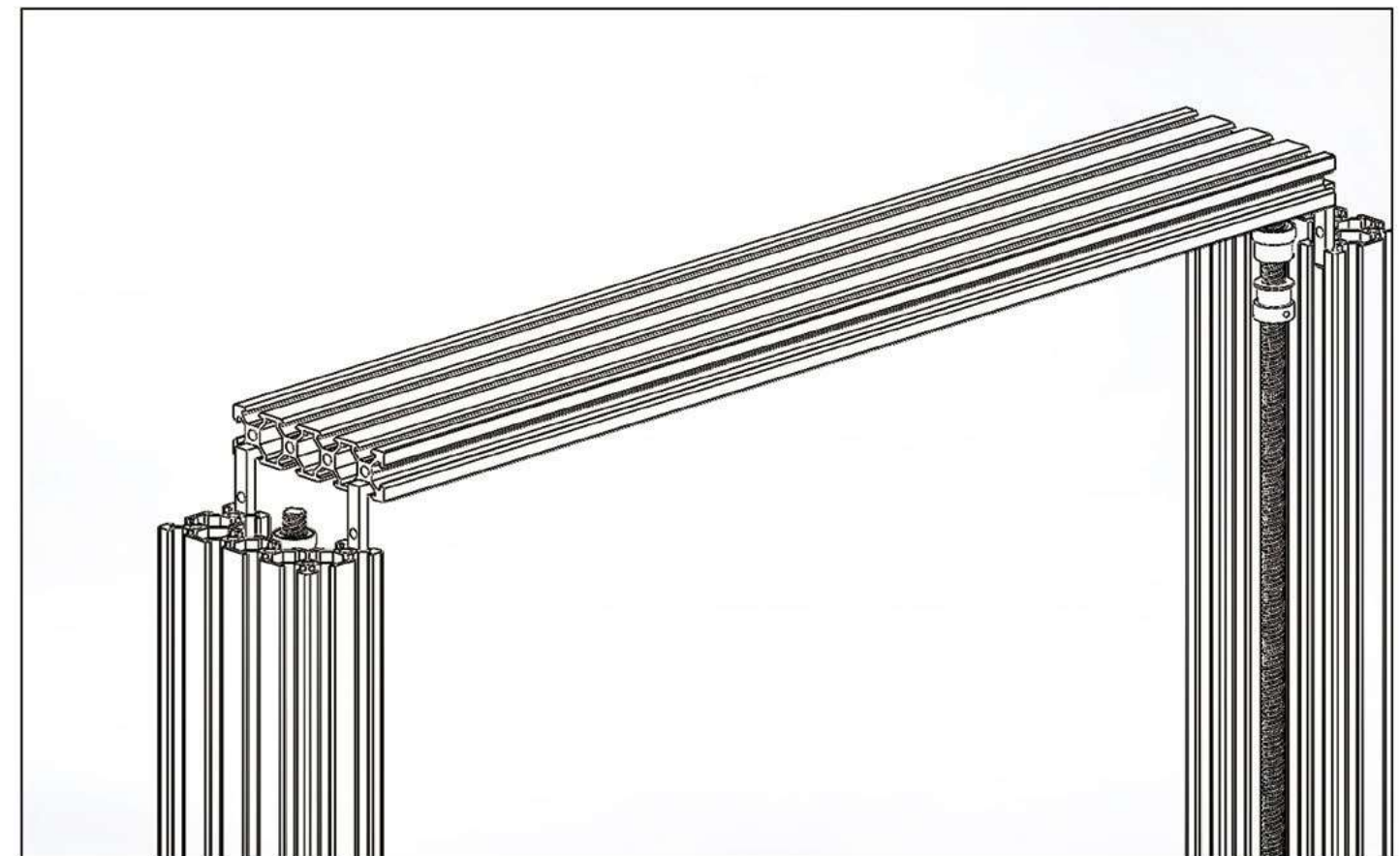
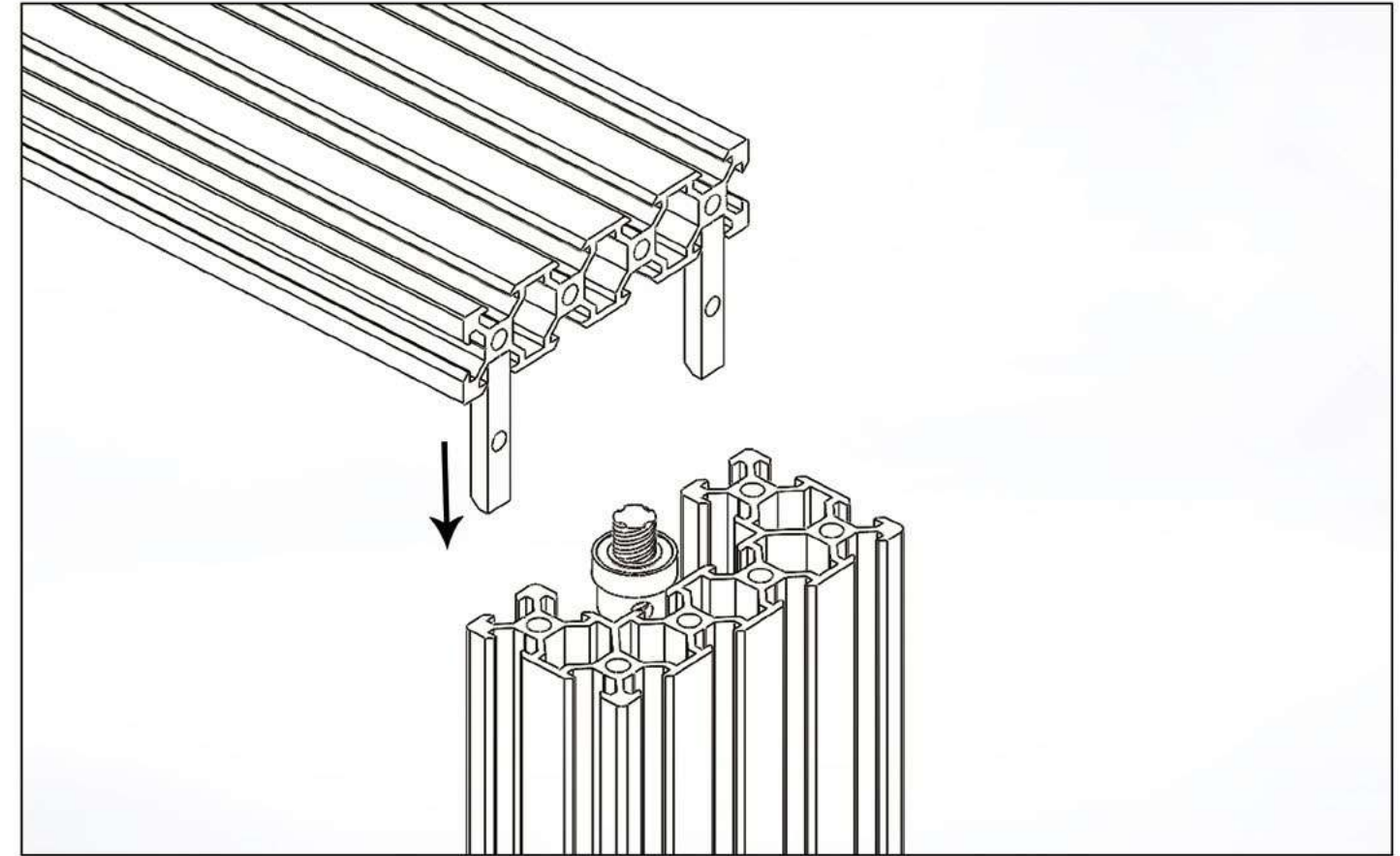


AT THE TOP OF THE SCAFFOLD

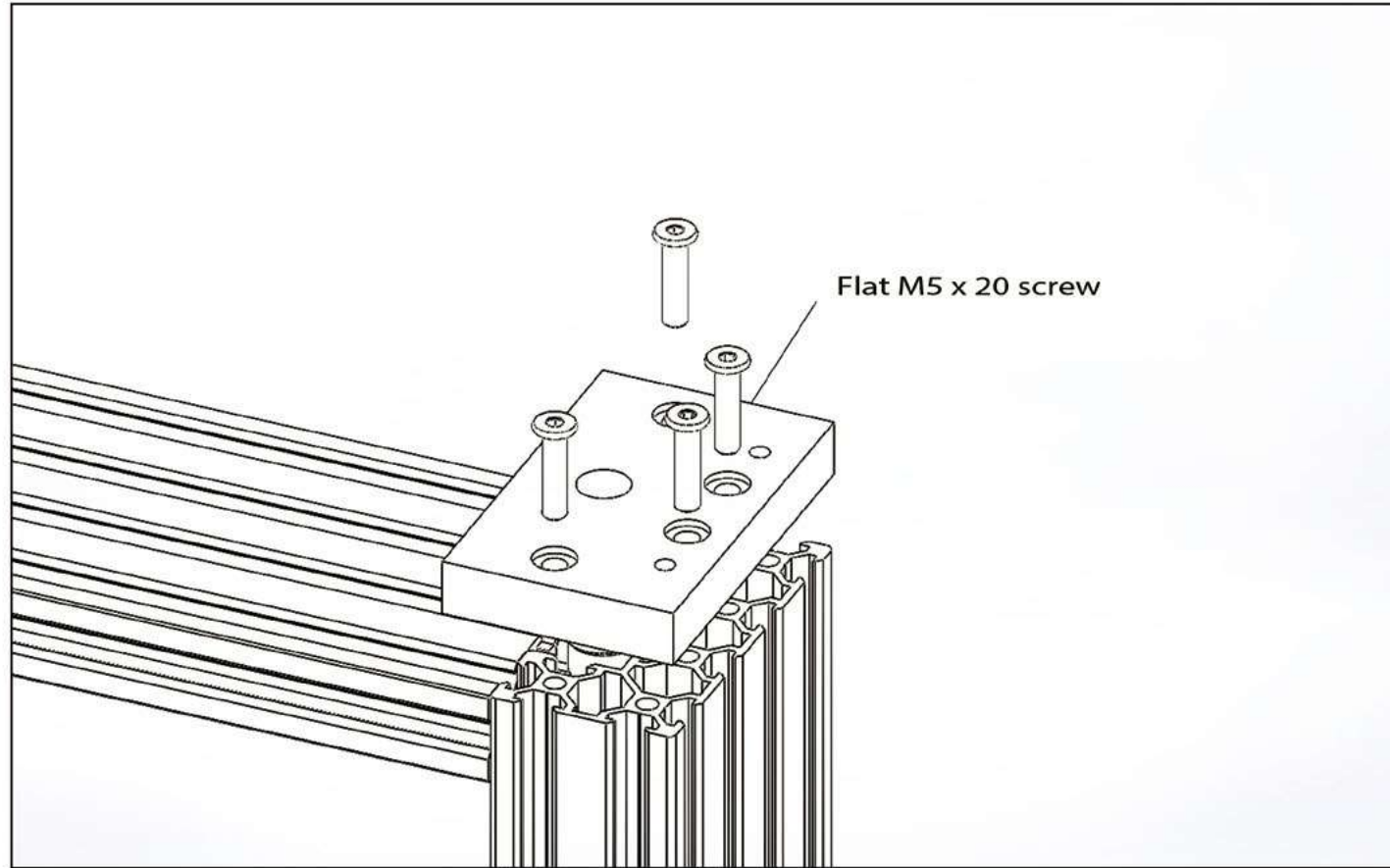
By adjusting the eccentric nut, let the pulley to profile



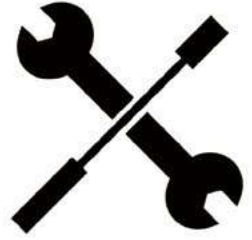
AT THE TOP OF THE SCAFFOLD



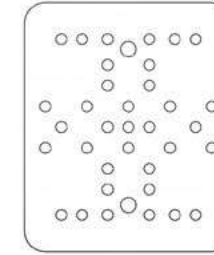
## AT THE TOP OF THE SCAFFOLD



## THE X AXIS INSTALLATION



**PARTS  
ARE READY**

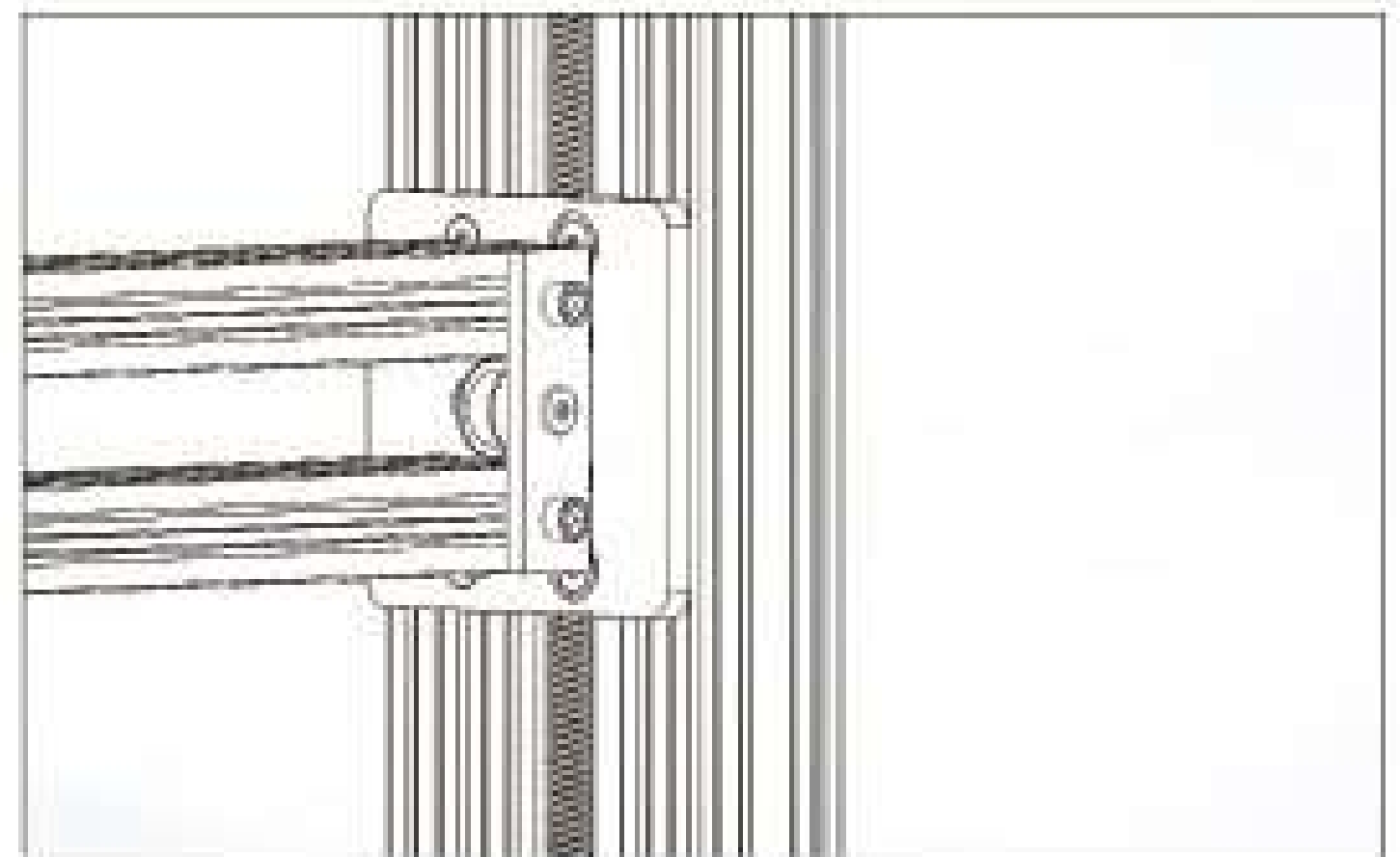
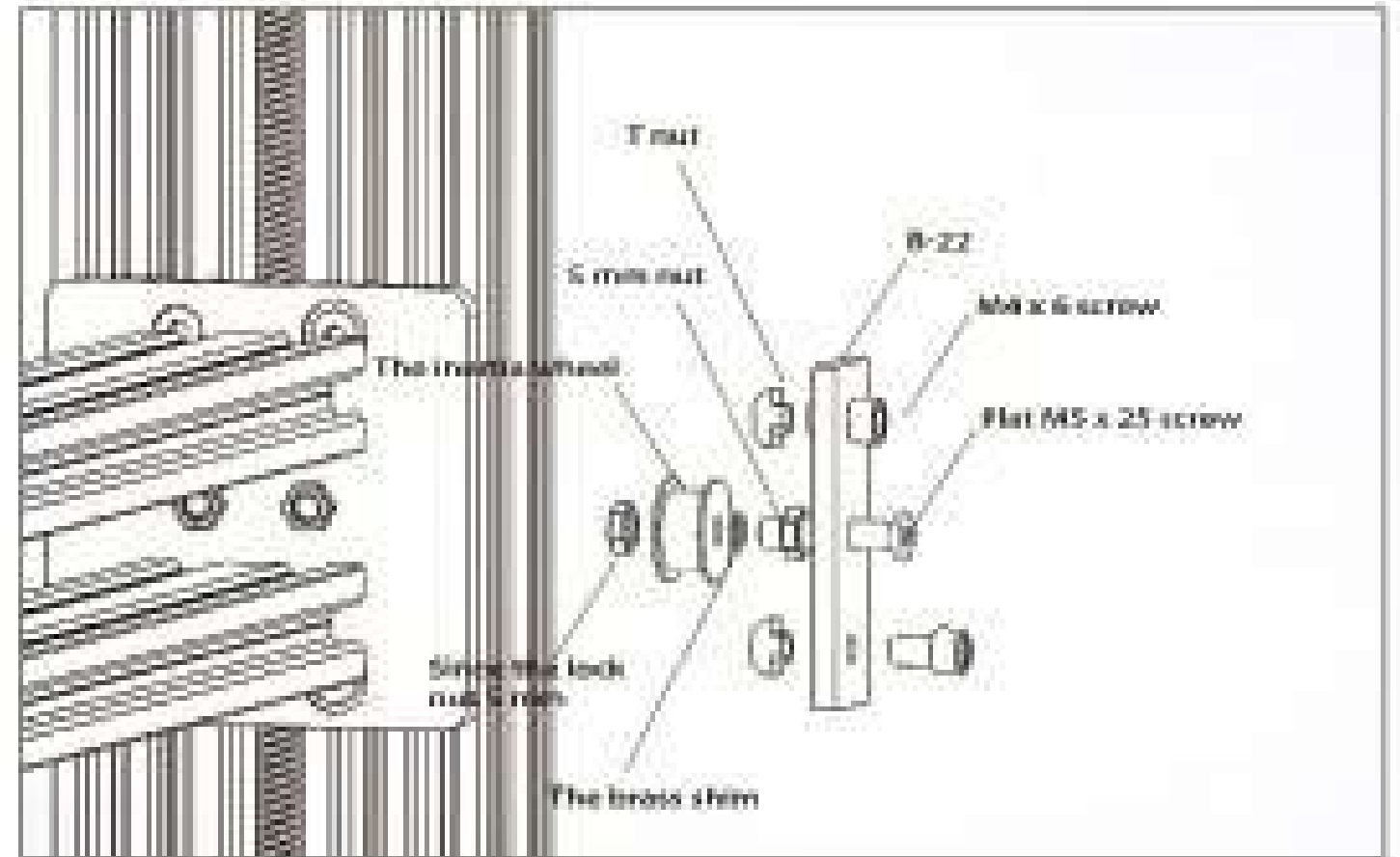
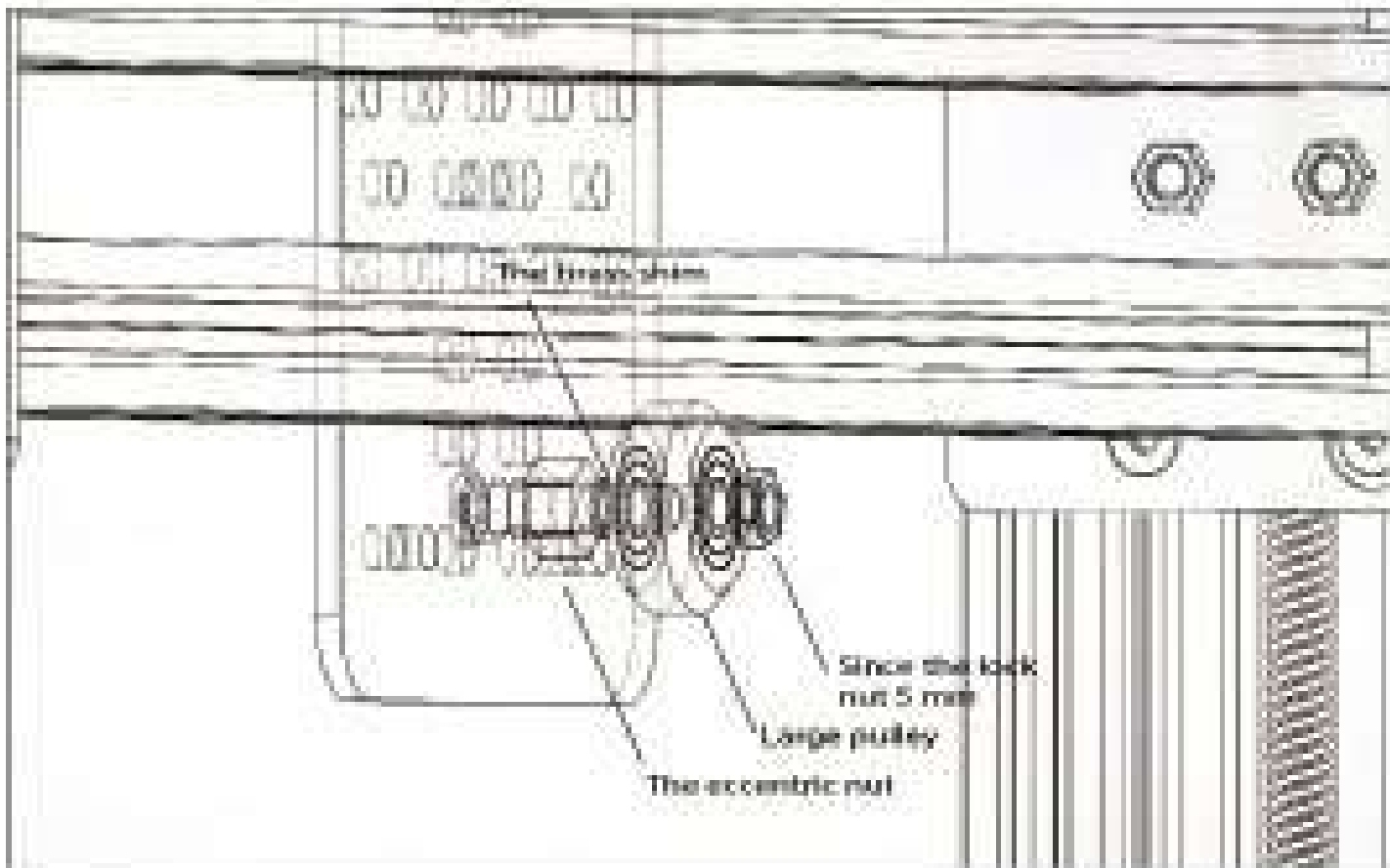
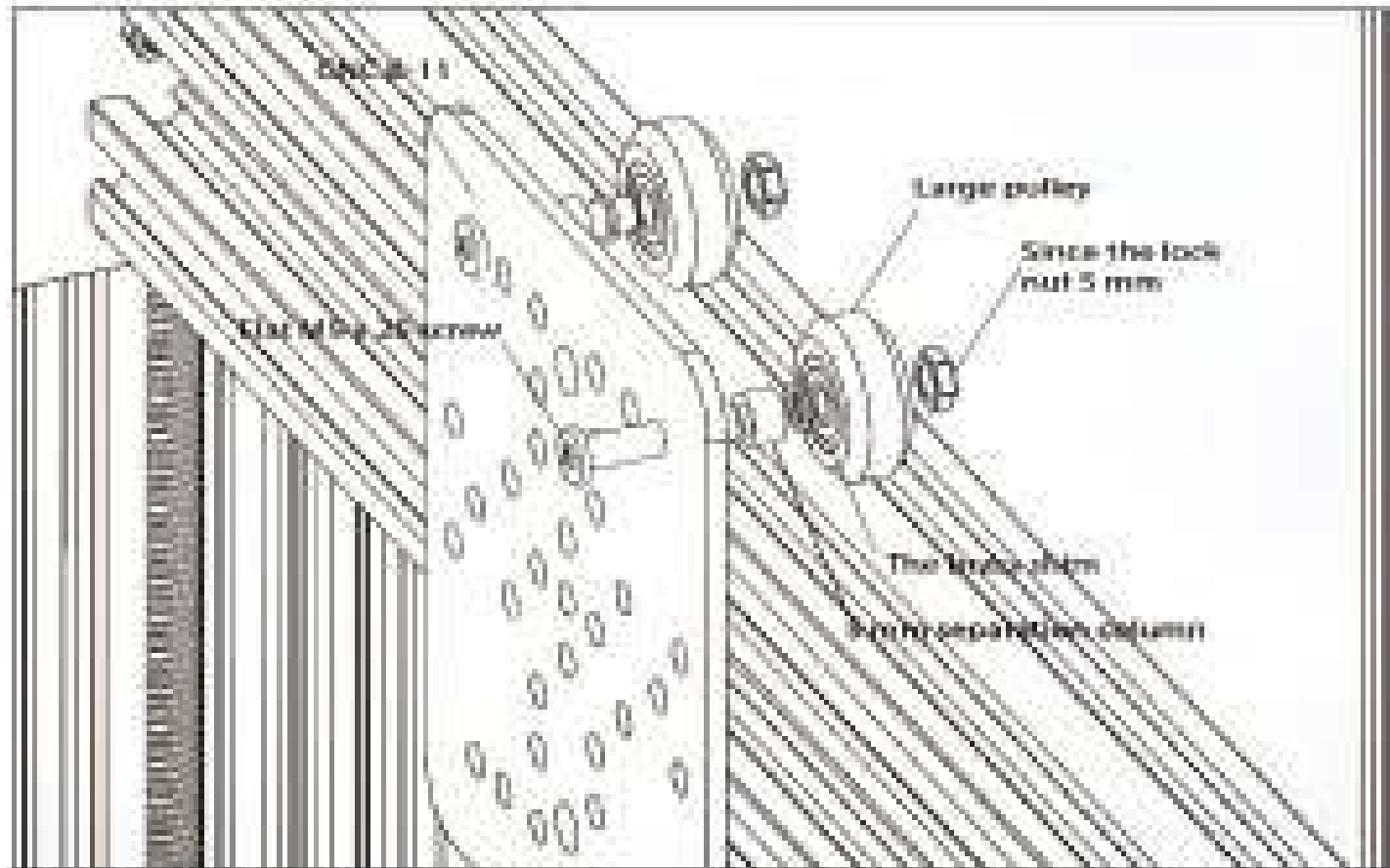


➤ CNC B-11  
CNC B-9  
B-22  
B-18

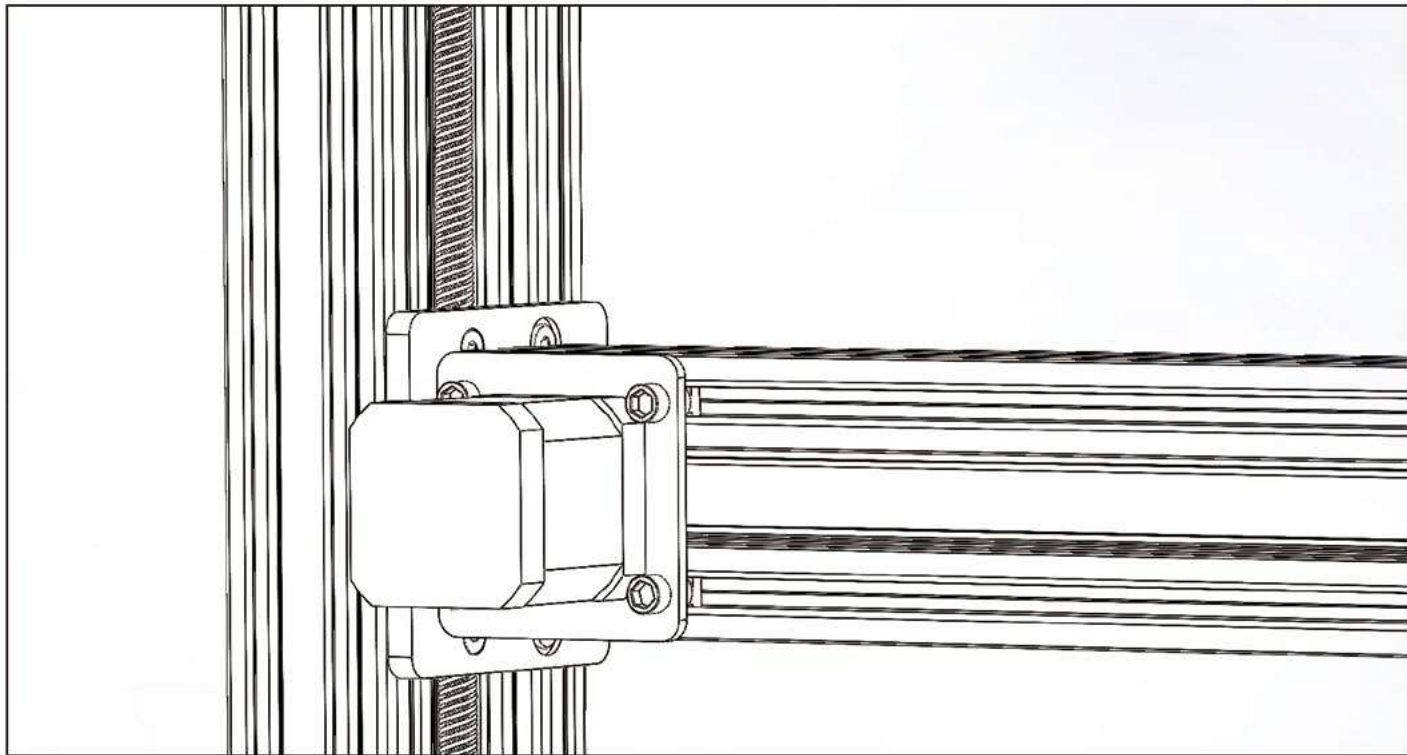
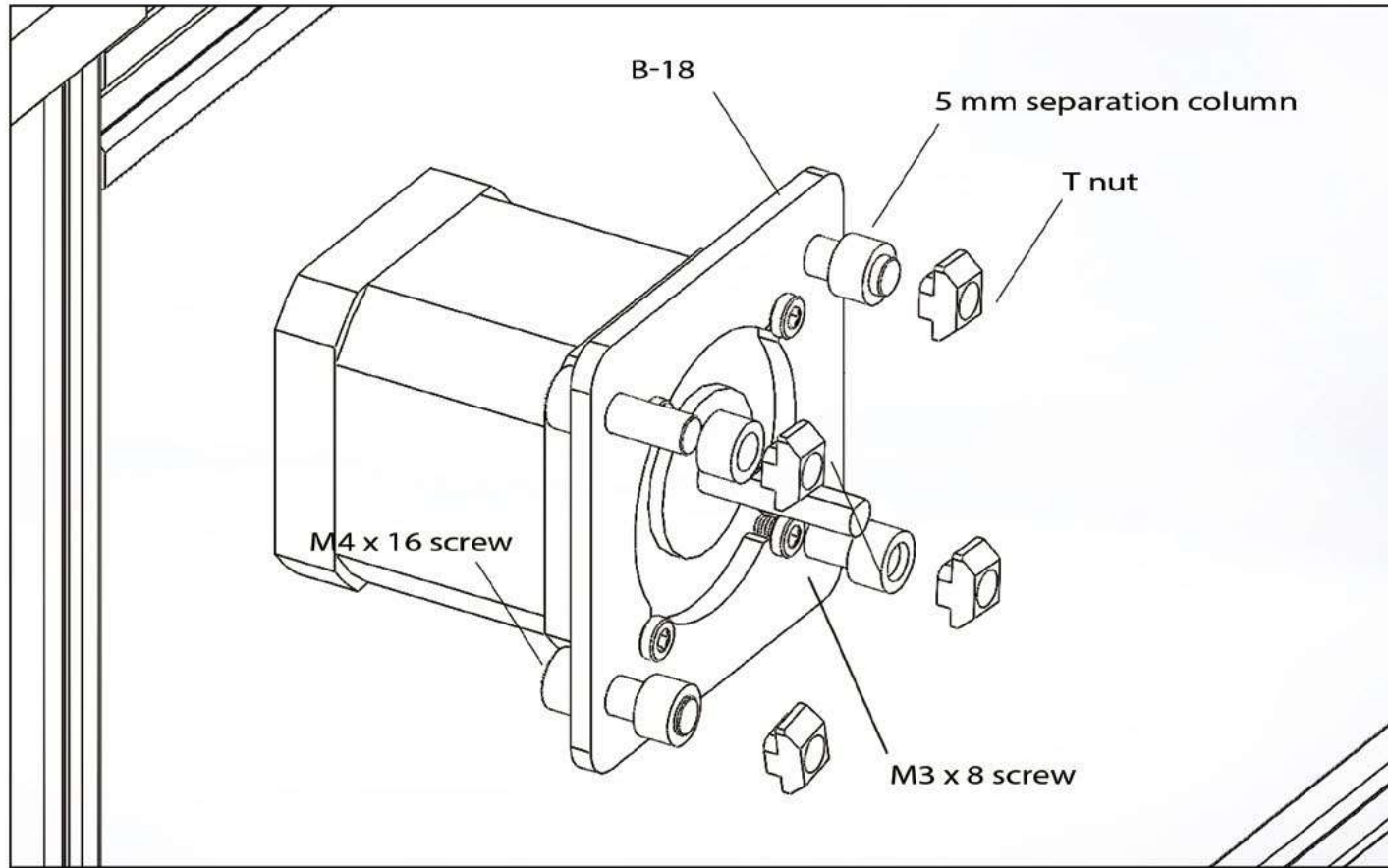


➤ Flat M5 x 25 screw \* 3  
Flat M5 x 15 screw \* 6  
M3 x 6 screw \* 4  
M4 x 6 \* 4  
M3 x 8 \* 4  
5 mm separation column \* 6  
Nylon nut 5 mm \* 4  
Lock Collar 8mm \* 2  
Brass shim \* 4  
Large pulley \* 3  
Eccentric nut \* 1  
T nut \* 6  
Inertia wheel \* 1

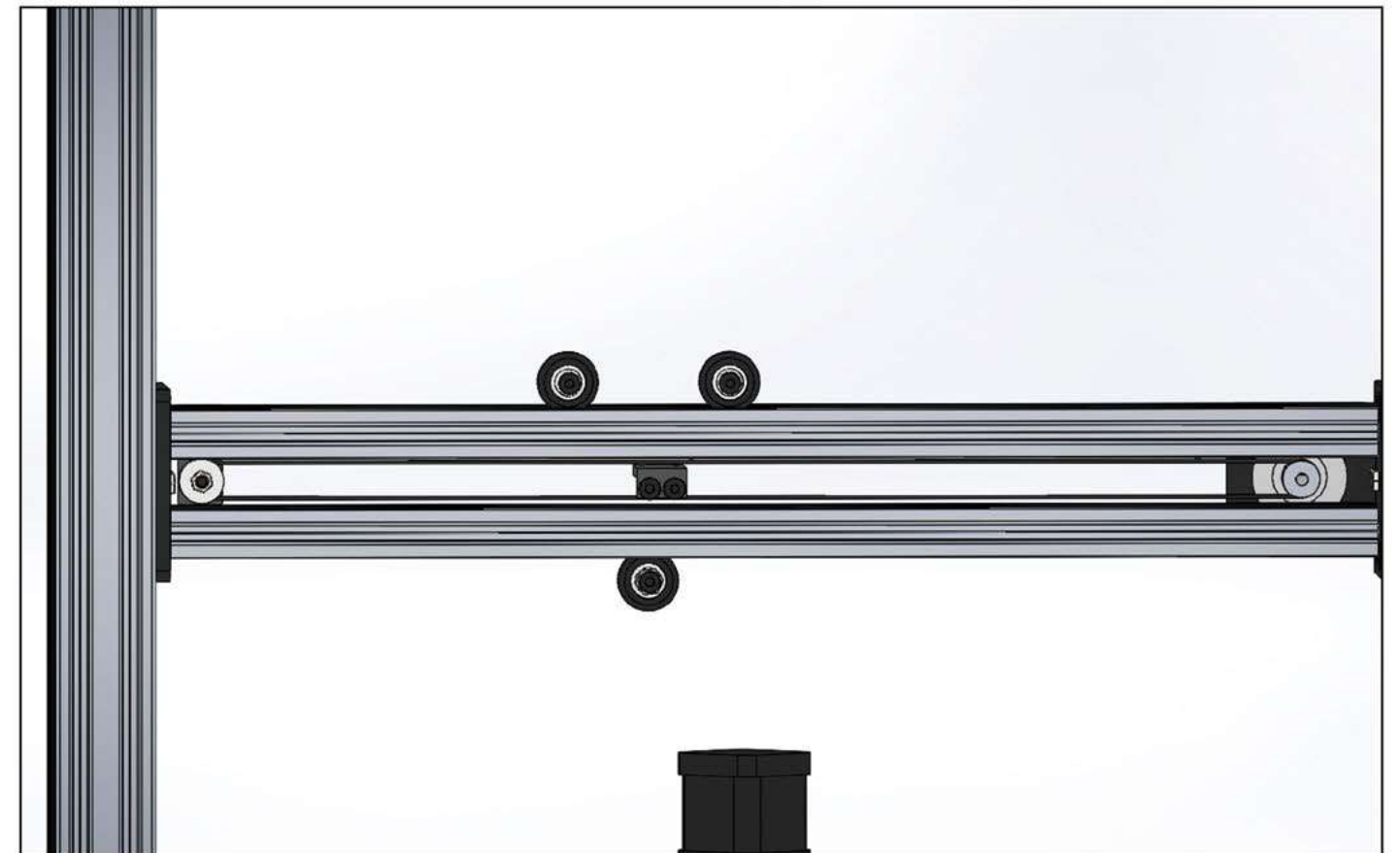
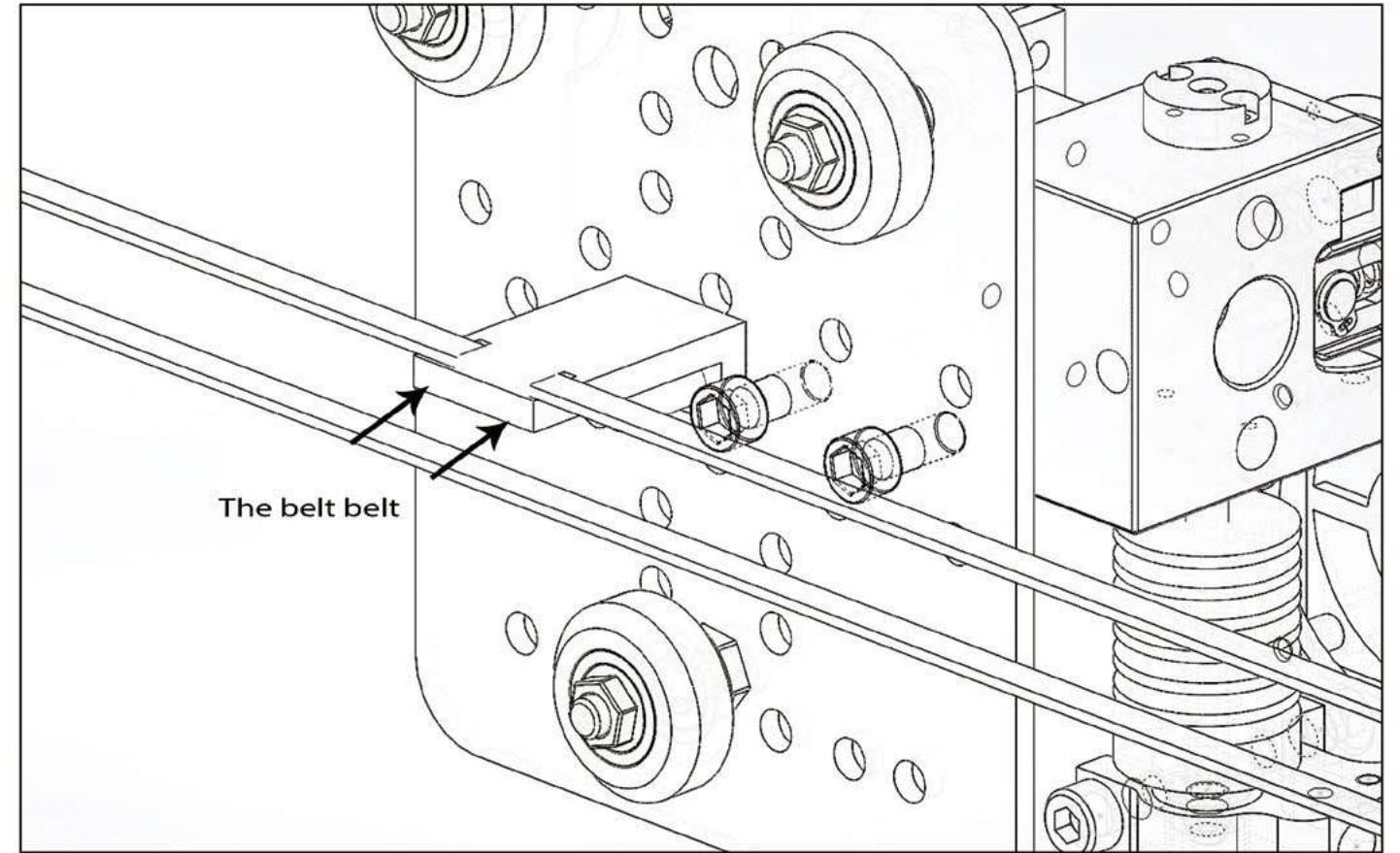




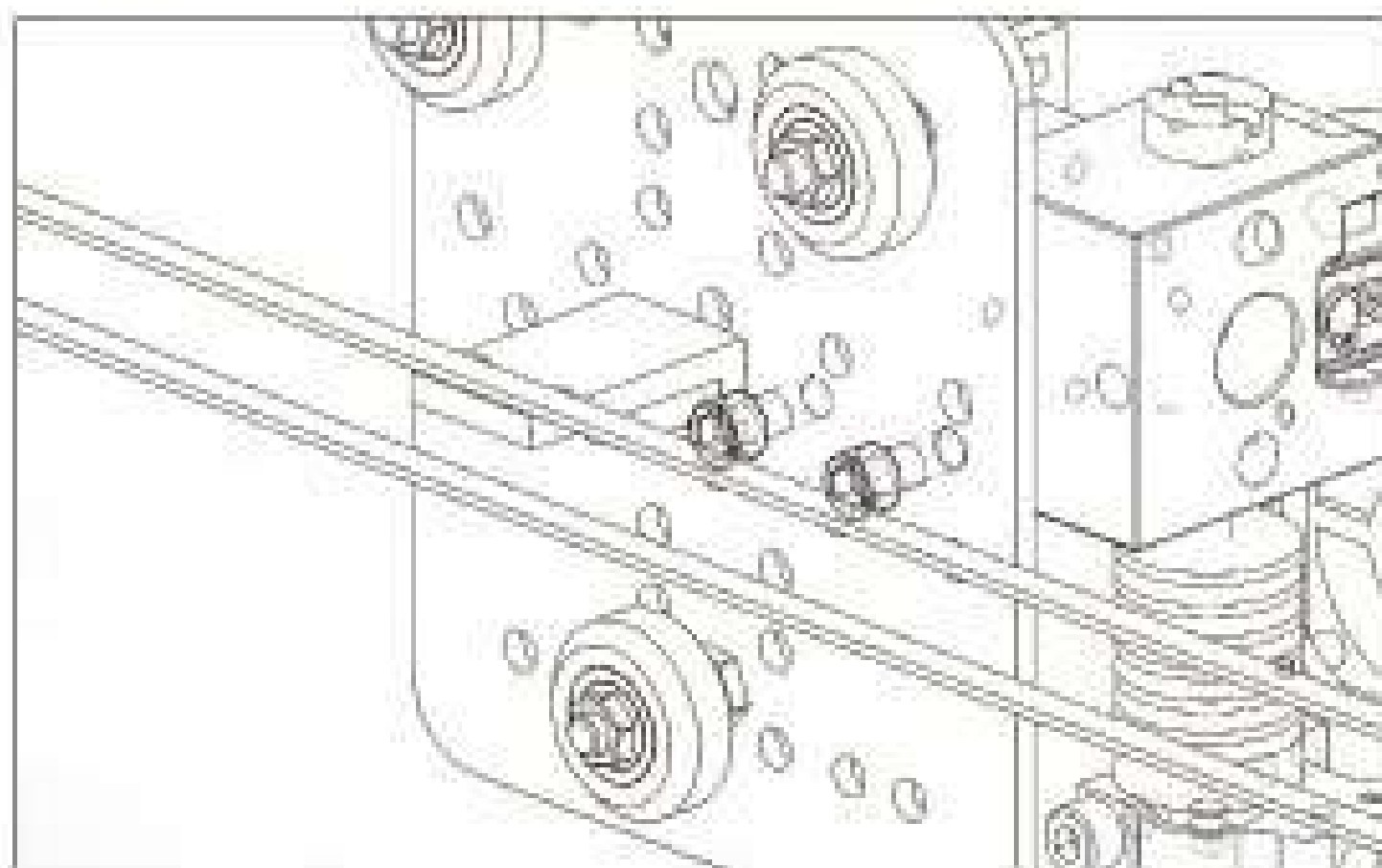
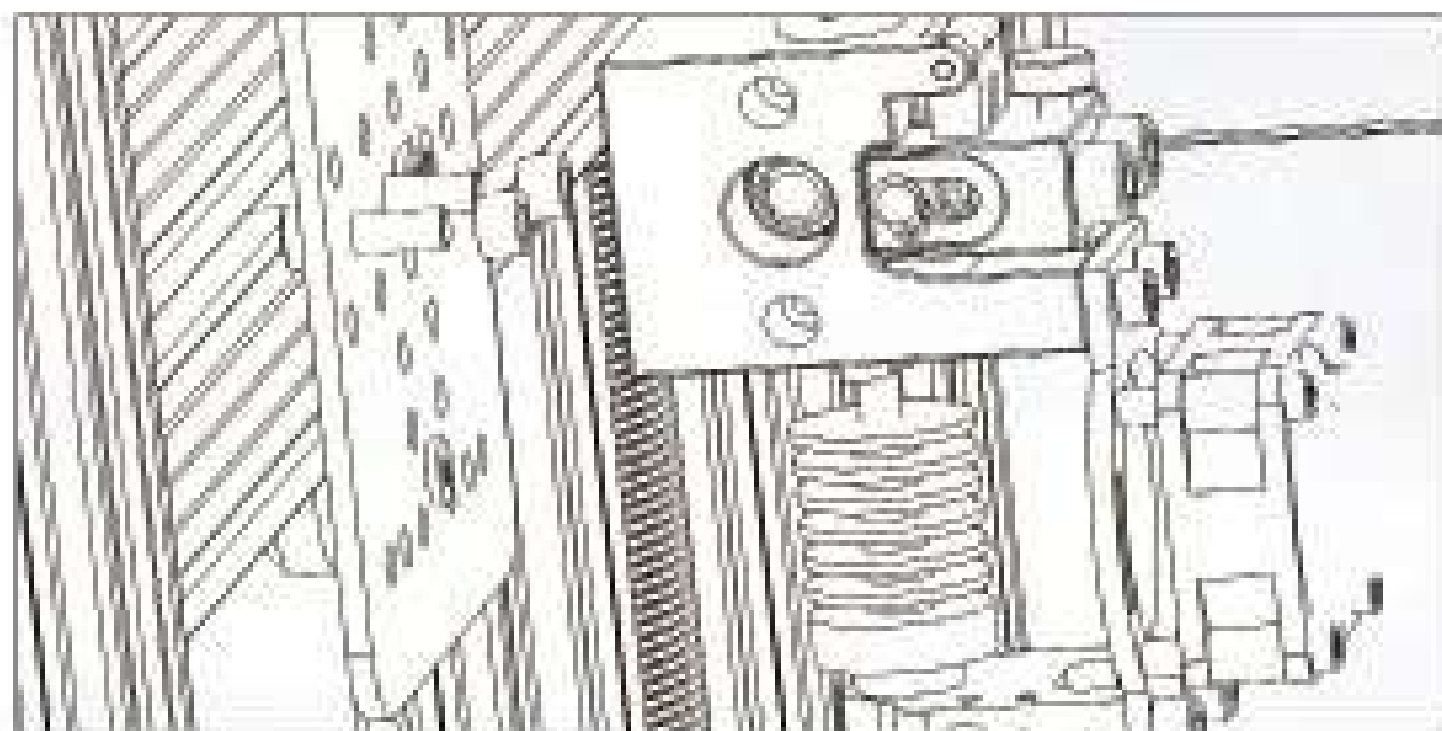
THE X AXIS INSTALLATION



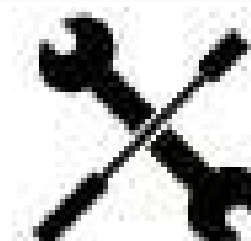
THE X AXIS INSTALLATION







EXTRUDER IN EXTRUDER BOX FIXED COMPONENTS



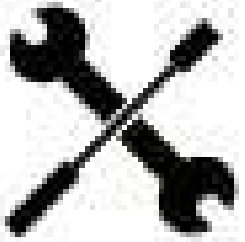
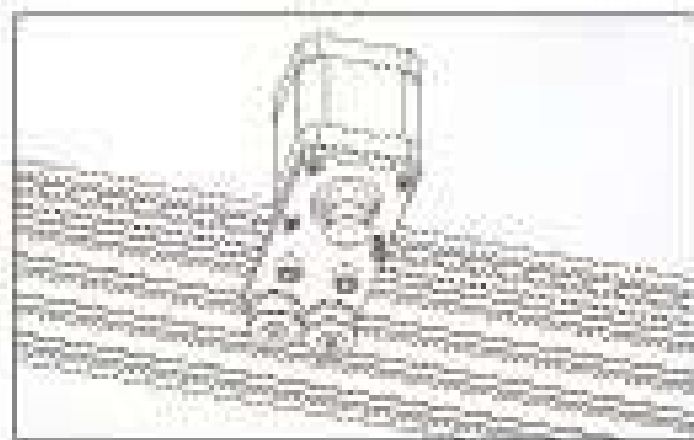
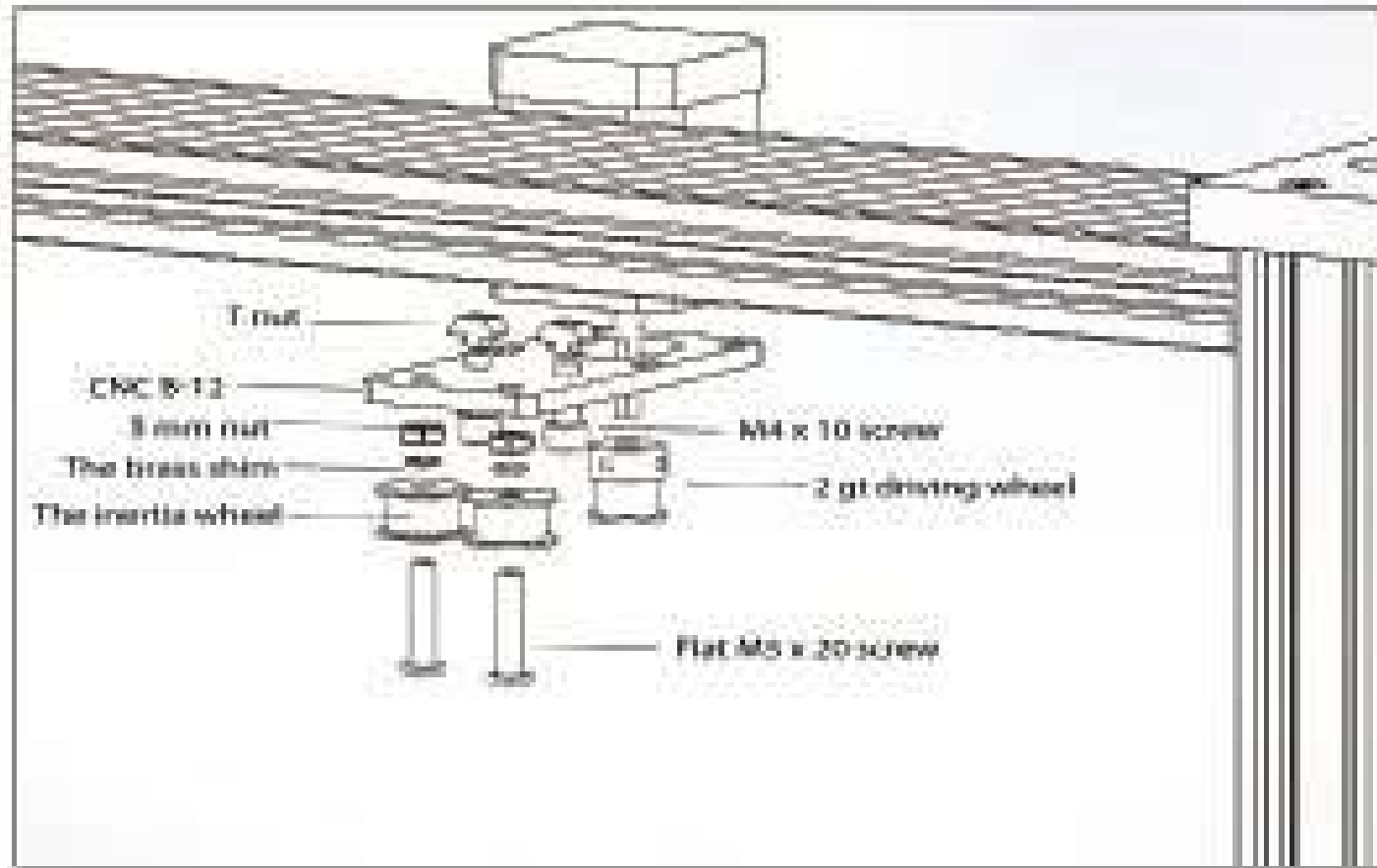
**PARTS  
ARE READY**



CNC B-12



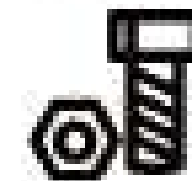
Flat M5 x 10 screw \* 2  
 M4 x 10 screw \* 2  
 The brass shim \* 2  
 5 mm nut \* 2  
 T nut \* 2  
 The inertia wheel \* 2  
 2 qt driving wheel  
 M3 x 8 screw \* 4



PARTS  
ARE READY



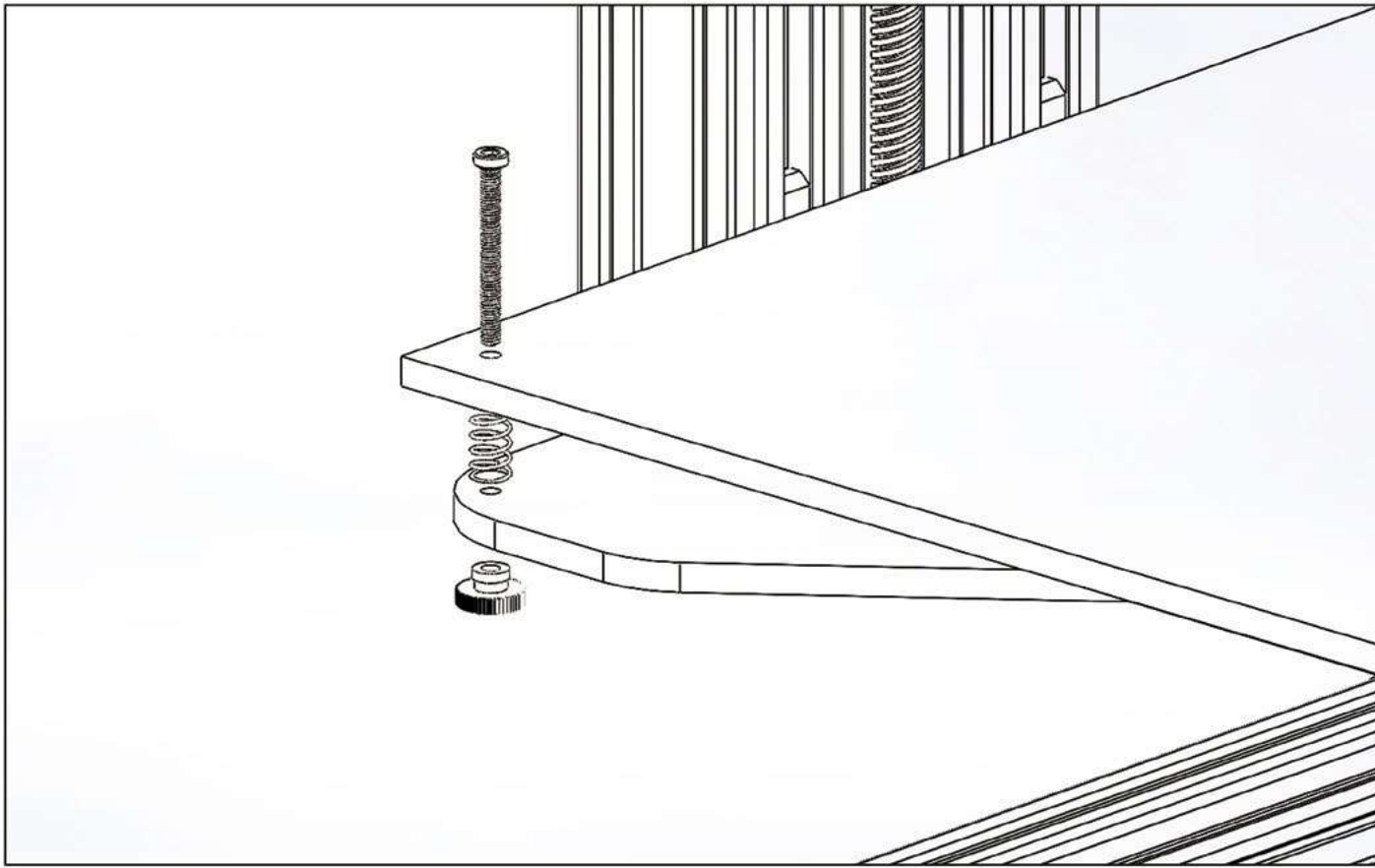
HOT BED



Hot bed mounting screws group



INSTALL THE HOT BED



DRAG CHAIN INSTALLATION



PARTS ARE READY

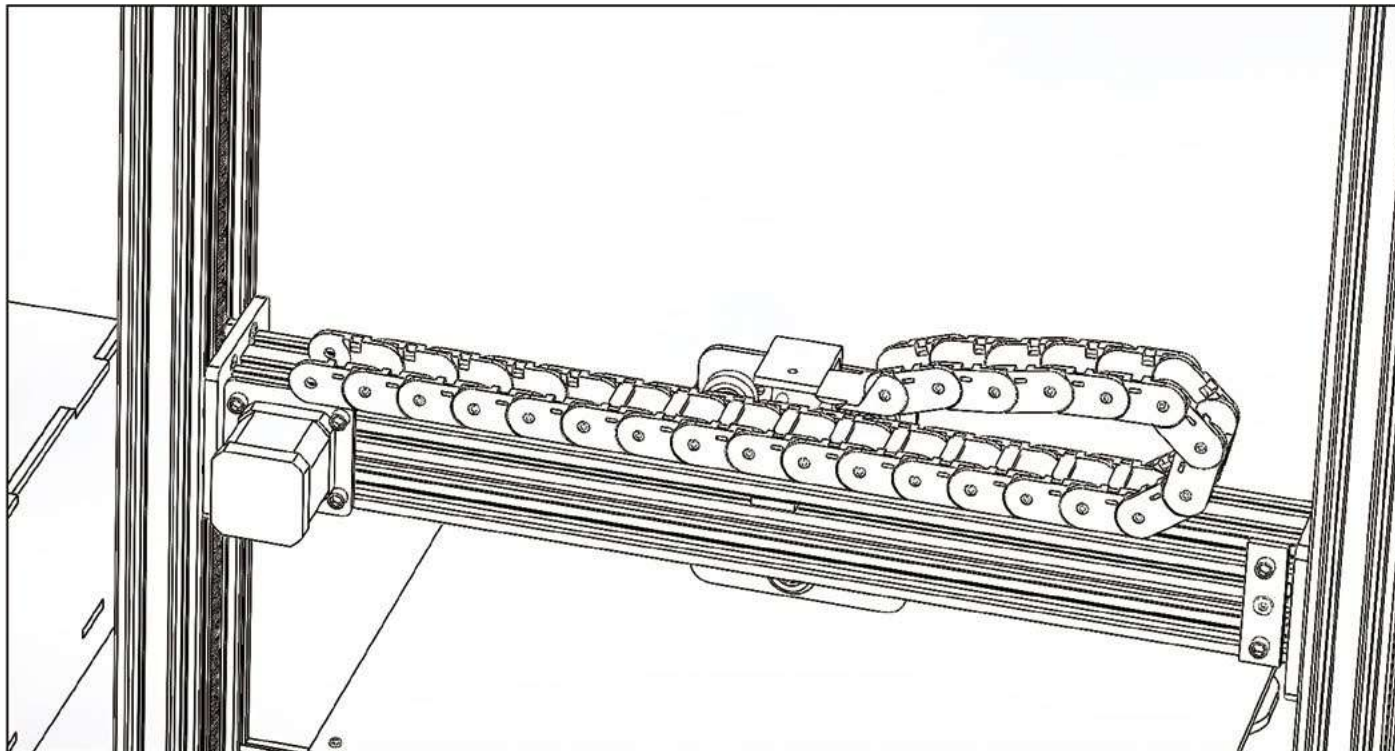
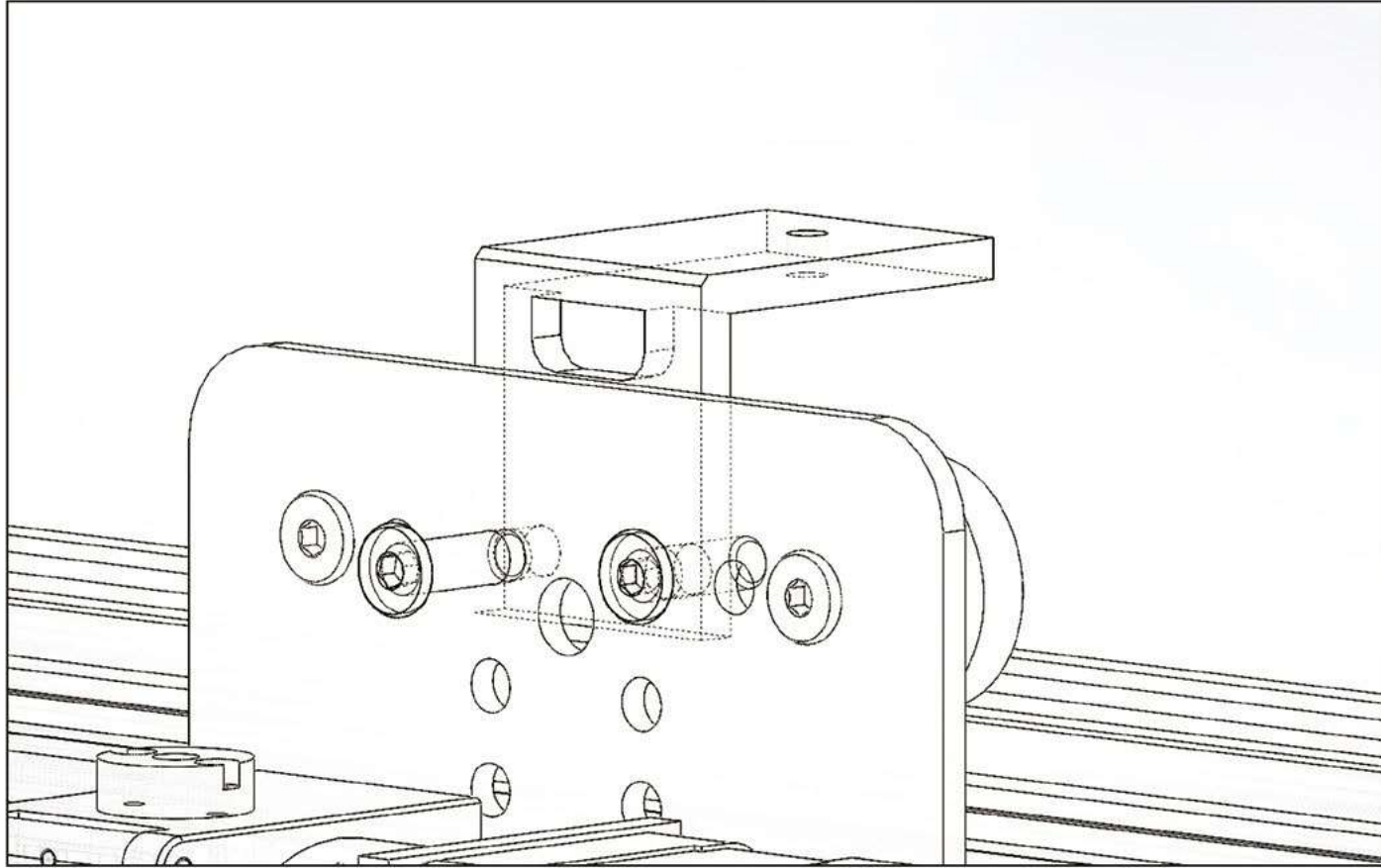


CNC B-21  
CNC B-23

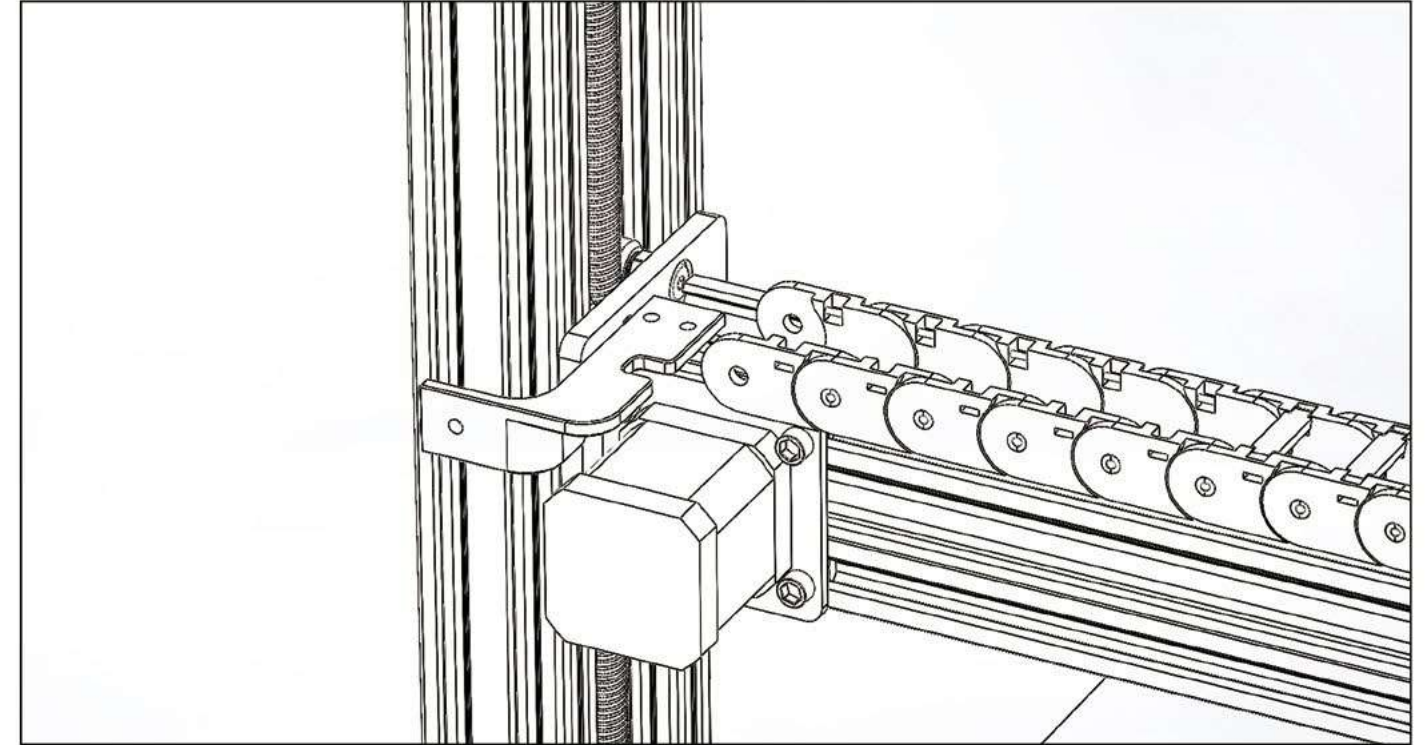


Drag chain  
Drag chain screw fixation group

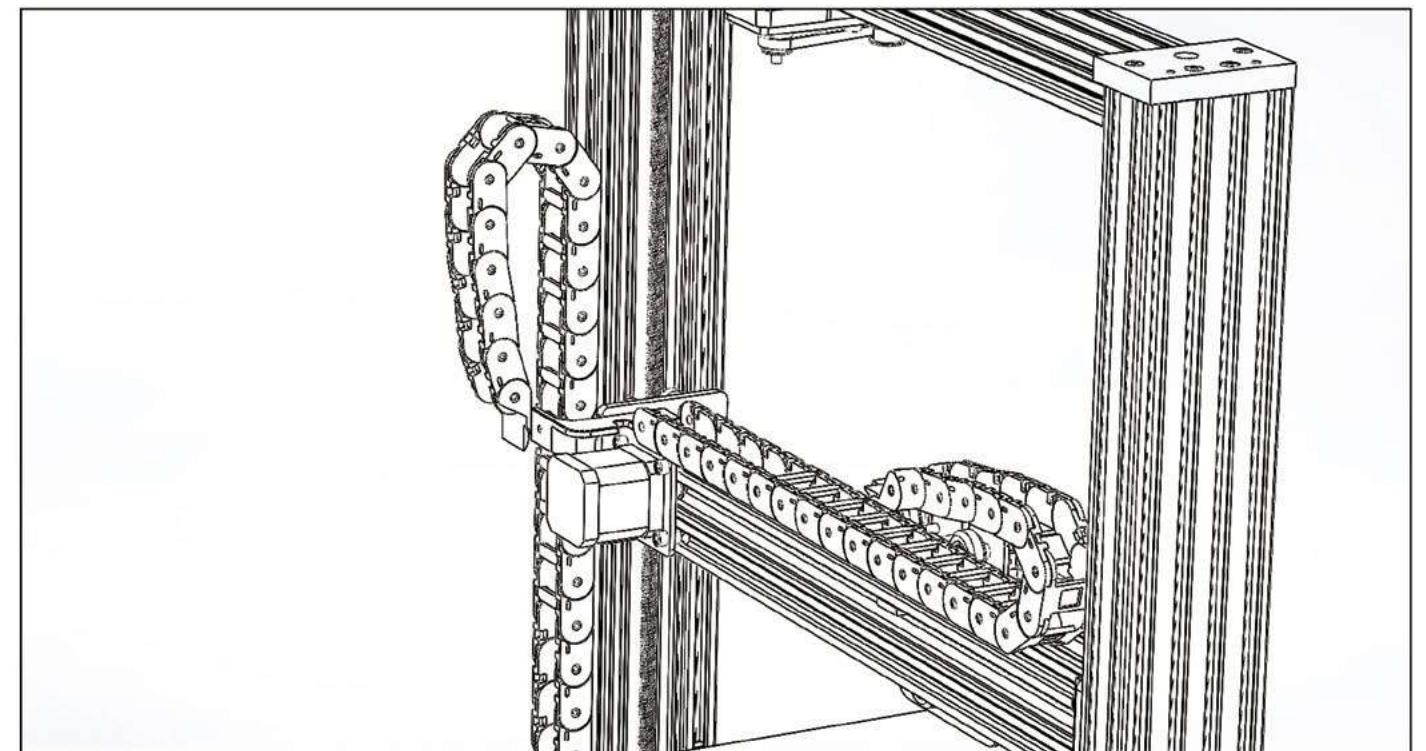
## DRAG CHAIN INSTALLATION



## DRAG CHAIN INSTALLATION



AS SHOWN IN FIGURE POSITION TO INSTALL







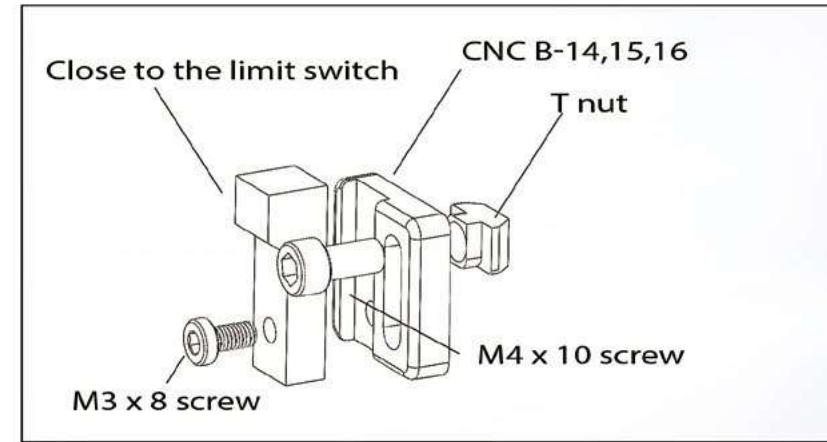
**PARTS  
ARE READY**



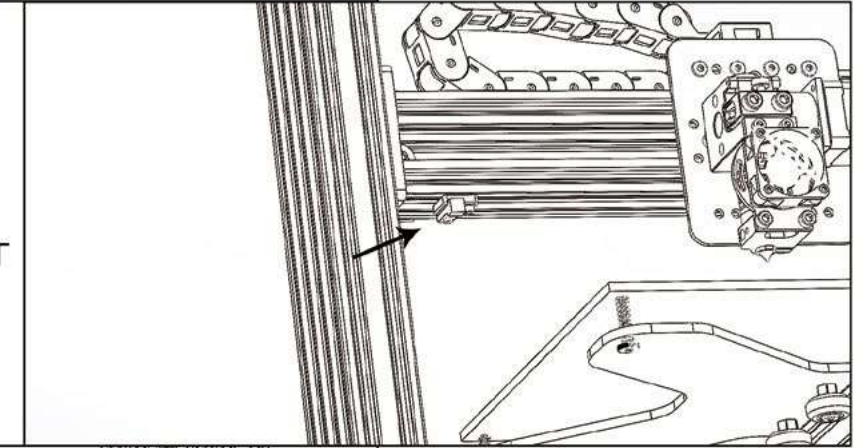
➤ CNC B-14,15,16



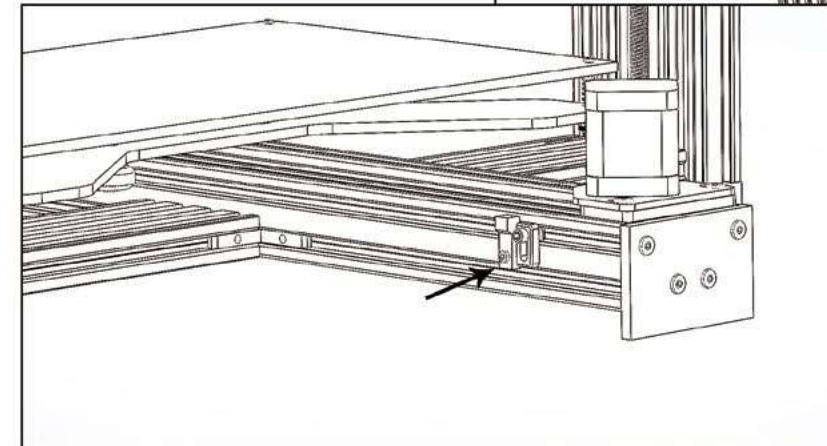
➤ Close to the limit switch \* 3  
T nut \* 3  
M4 x 10 screw \* 3  
M3 x 8 screw \* 3



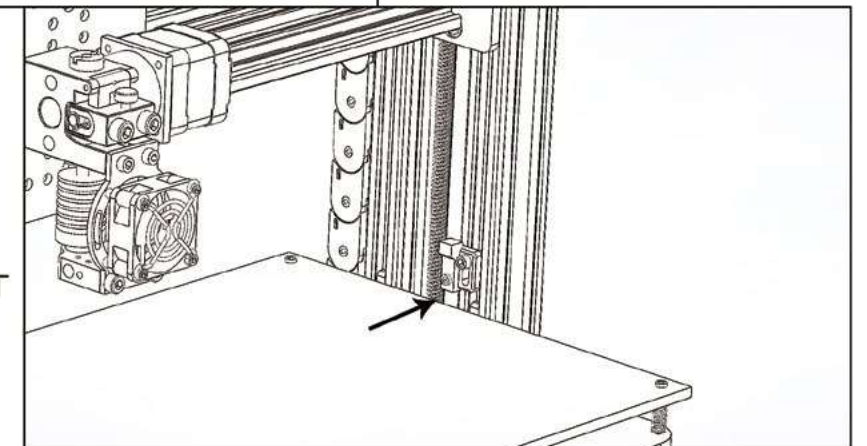
THE X-AXIS LIMIT



THE Y-AXIS LIMIT

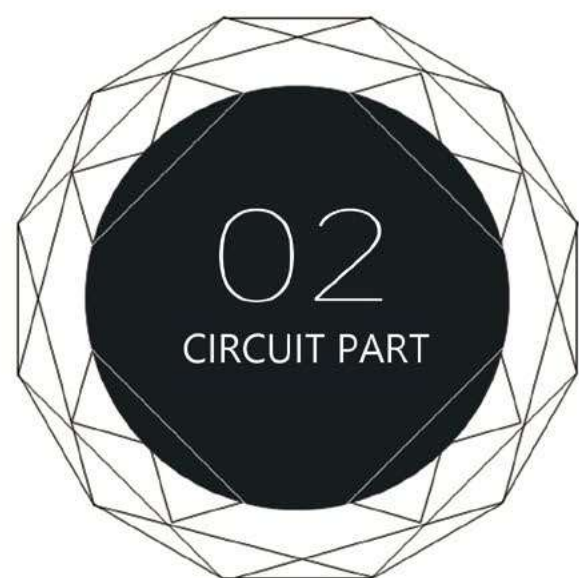


THE Z-AXIS LIMIT



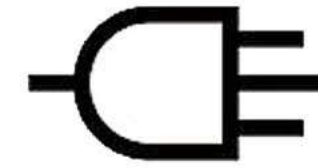
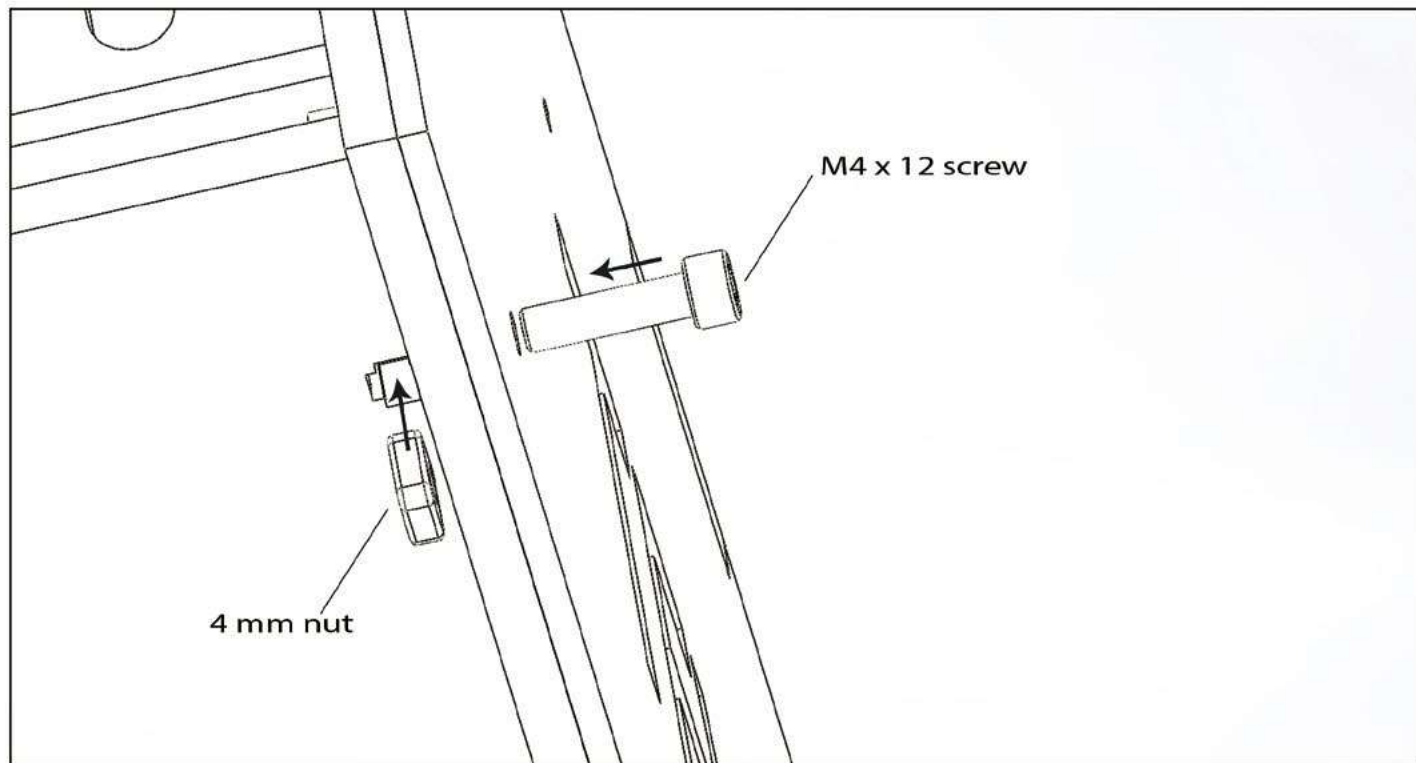
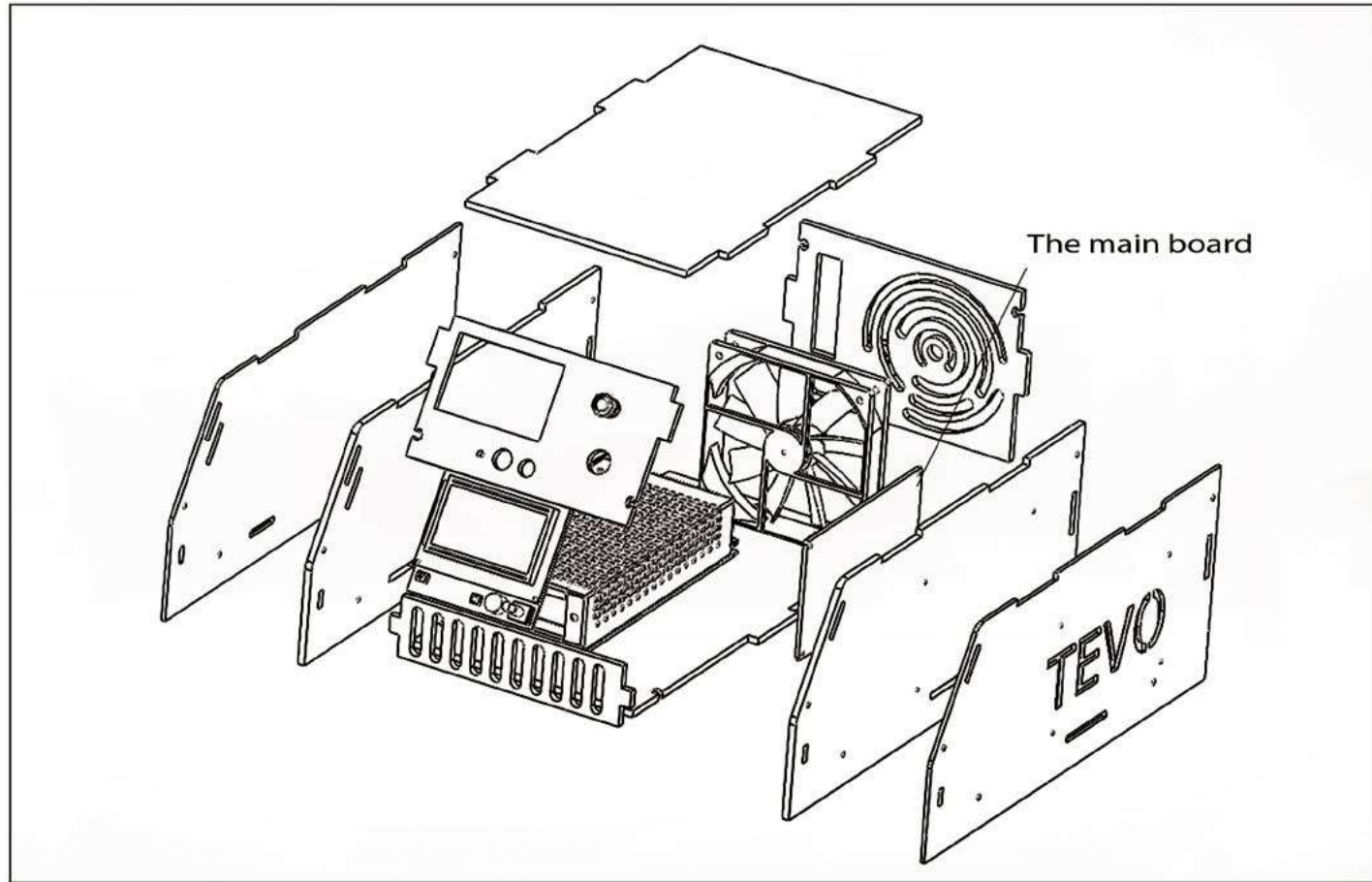


**PARTS  
ARE READY**

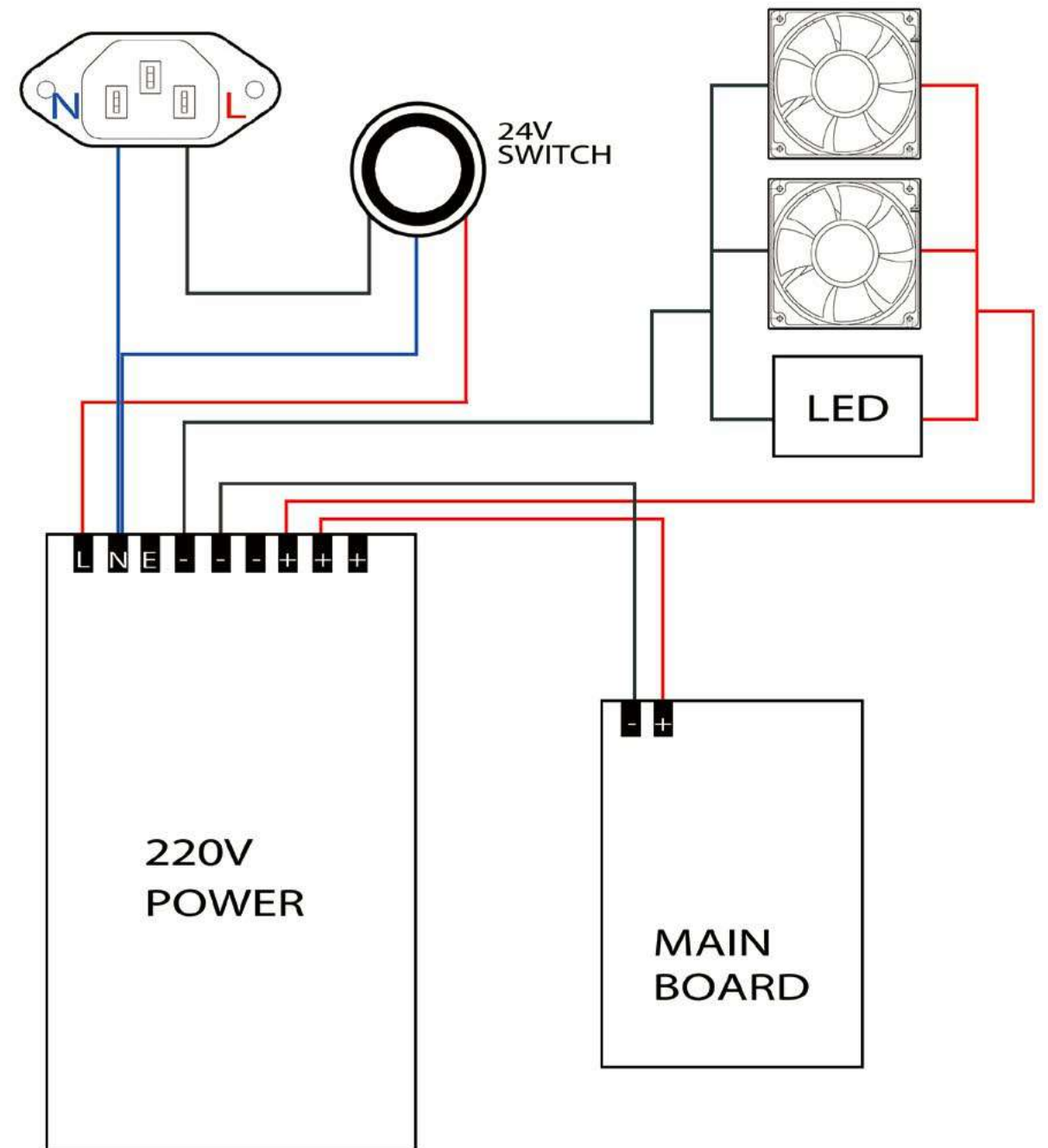


CONTROL BOX SUITE  
24 V SWITCHING POWER SUPPLY  
THE MAIN BOARD  
THE CONTROL PANEL





CONNECT THE WIRES ACCORDING TO INDICATION





TEVO

特维电子科技有限公司

TEVO 3D Electronic Technology Co., Ltd.



# PRODUCT SYSTEM



13 PRINTER SERIES  
GANTRY STRUCTURE

THE MULTI-FUNCTION  
MACHINE

CURING LIGHT



LISTED

TO BE LISTED

RESEARCH  
AND  
DEVELOPMENT



LISTED



Machine Size 500mm x 500mm x 400mm	Machine Weight 4 kg
Printing Size 200mm x 200mm x 200mm	Layer 0.05mm - 0.4mm
Recommend Temp 100°C	I/O USB   SD card
2004 Led Display 20 x 4 character	Mainboard mega2560
Power In AC 220V	Power Demand DC 12V / 60W

YouTube QR Code

Facebook TEVO Tarantula Prusa i3 Owners

Single with Pulleys

- Quietness
- Stable
- High-Precision

Germany import bearing pulley

High accurate printing quality 5 microns

X Carriage crosswise printing different from the acrylic prusa i3 Novelty E3D Extruder support printing flex pla addition charge \$30

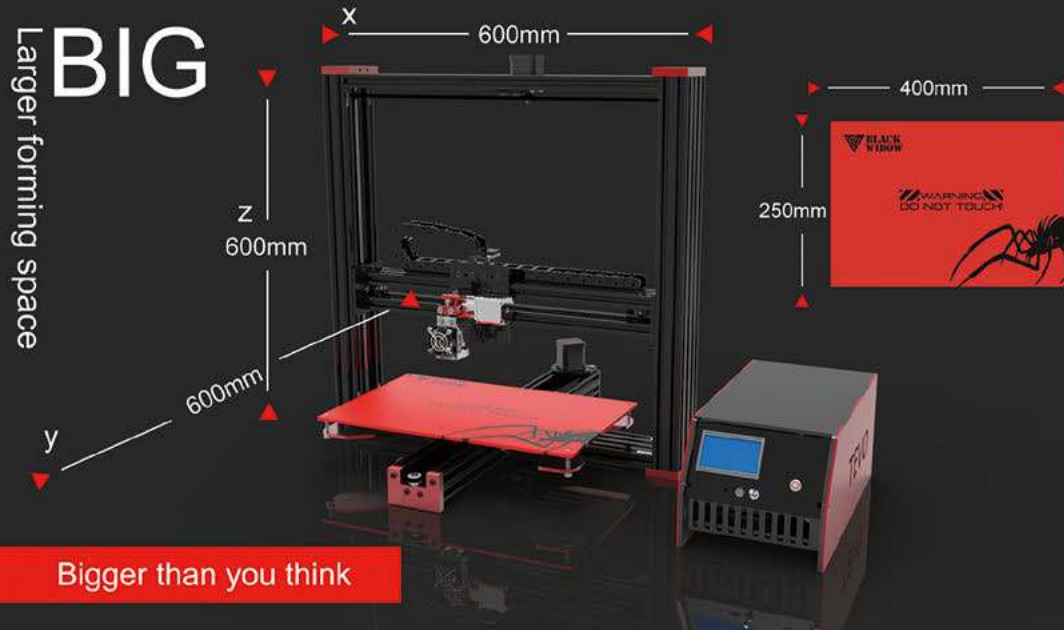
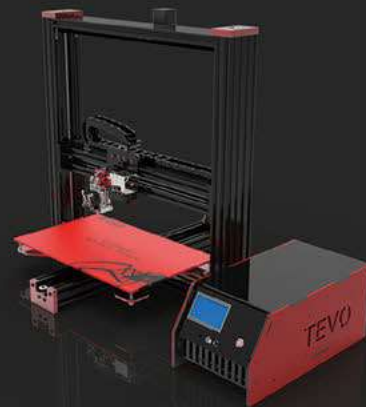
Custom Made MK3 Heating Bed . Make printer more professional

MKS Base mainboard supported dual extruder diy Specialized fan support mainboard cooling





-  Machine Size  
600mm x 600mm x 600mm
-  Machine Weight  
15 kg
-  Printing Size  
400mm x 250mm x 300mm
-  Layer  
0.05mm - 0.4mm
-  Recommend Temp  
200-300 C
-  USB  
USB | SD card
-  12864 Lcd Display  
20 x 4 character
-  Mainboard  
mega2560
-  Power In  
AC 110V-220V
-  Power Demand  
DC 24V 360W

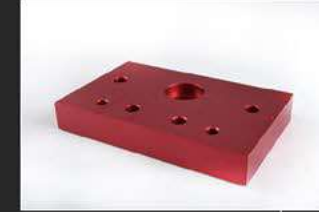


**BIG**

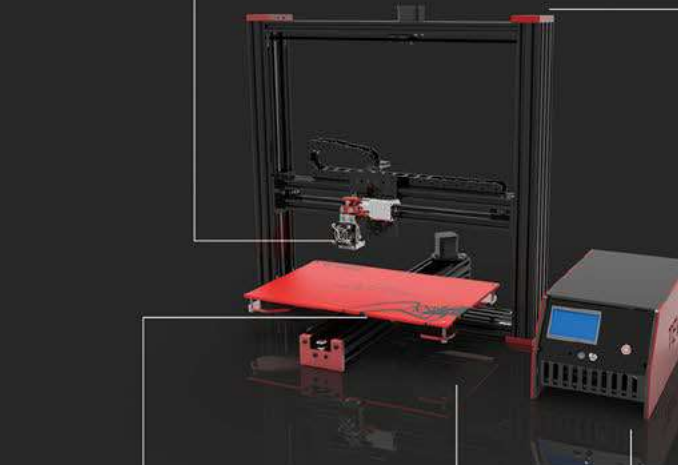
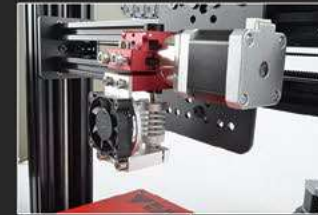
Larger forming space

Bigger than you think

Solid anodized aluminum plates are CNC milled for precise fit, extreme rigidity, and a beautiful look that will last.



All metal hot end and extruder, with a 5:1 gearing, let's you print common and exotic filaments with ease.



Enormous 400mm x 250mm heated bed heats up extremely fast, so you can print large things faster!

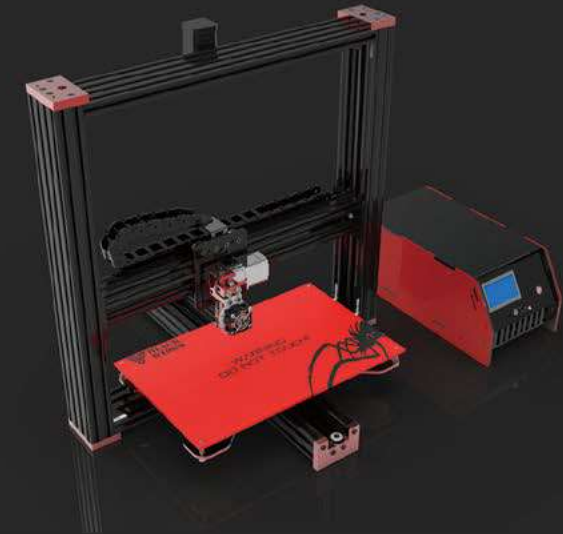


Tiny inductive sensors for homing this all metal printer, for a clean and reliable experience.



Custom electronics box keeps control board cool and wires looking neat.

Black widow is not only upgrade, is the most perfect experience of DIY







TEVO 3D Electronic Technology CO.,Ltd.