

Инструкция по сборке многофункционального измерителя XJW01  
высокоточного (RLC, ESR, транзисторы) в картинках

<http://bbs.mydigit.cn/read.php?tid=1335613&fpage=4>

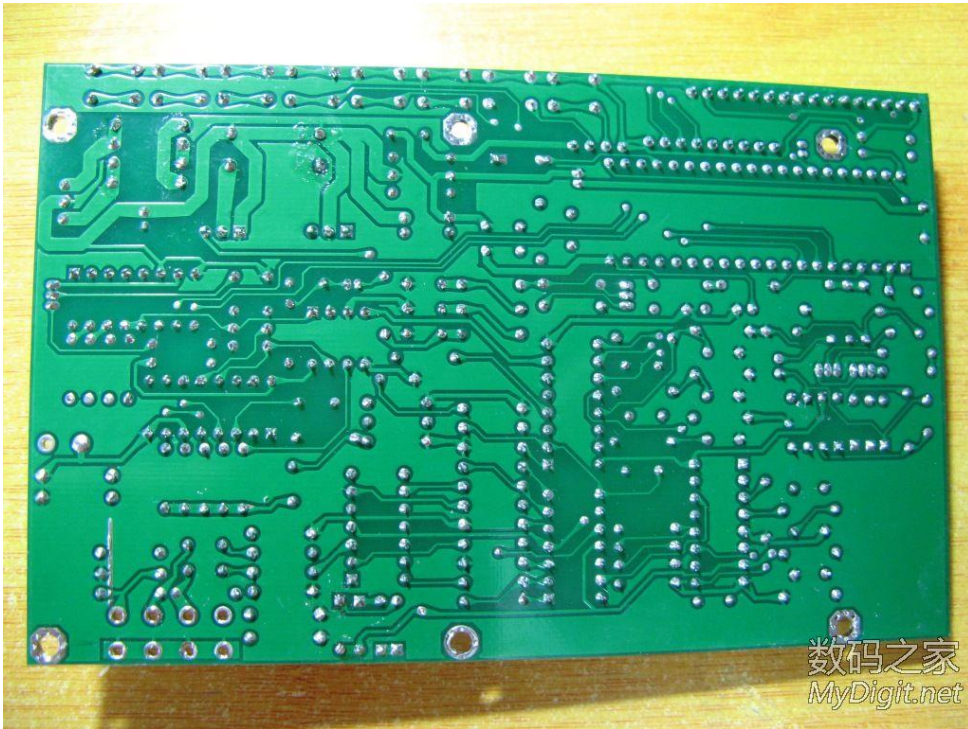
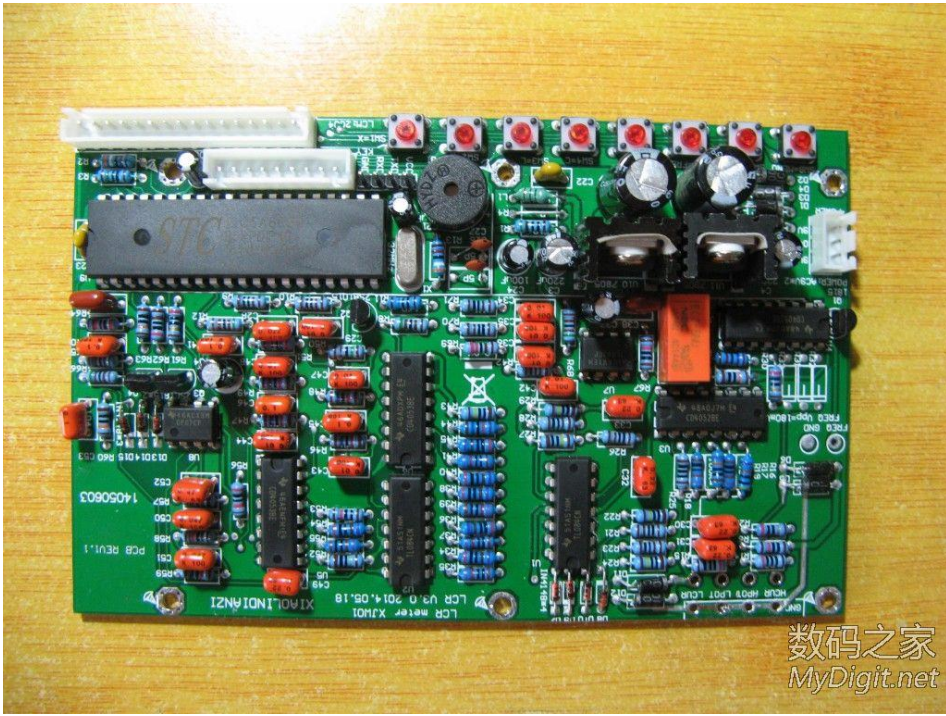
1



2



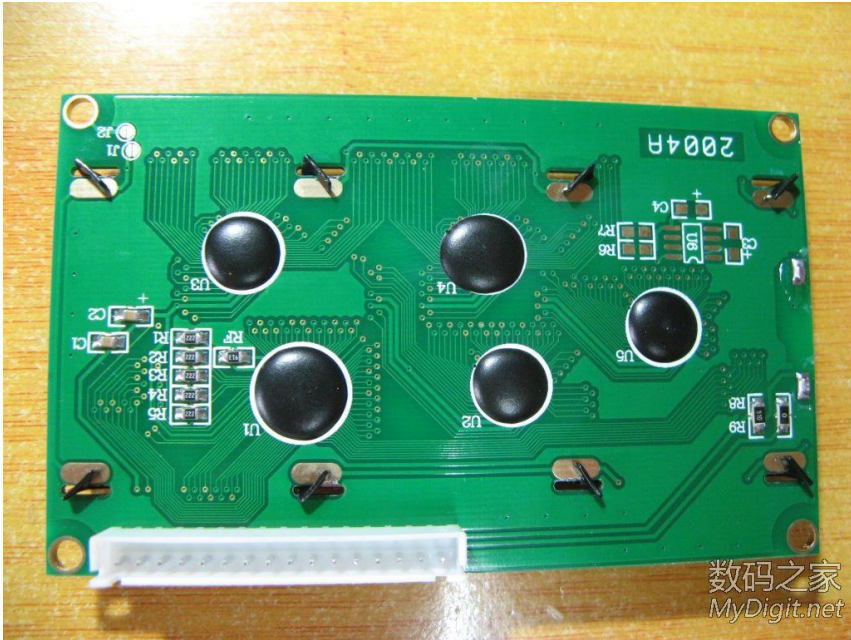
3



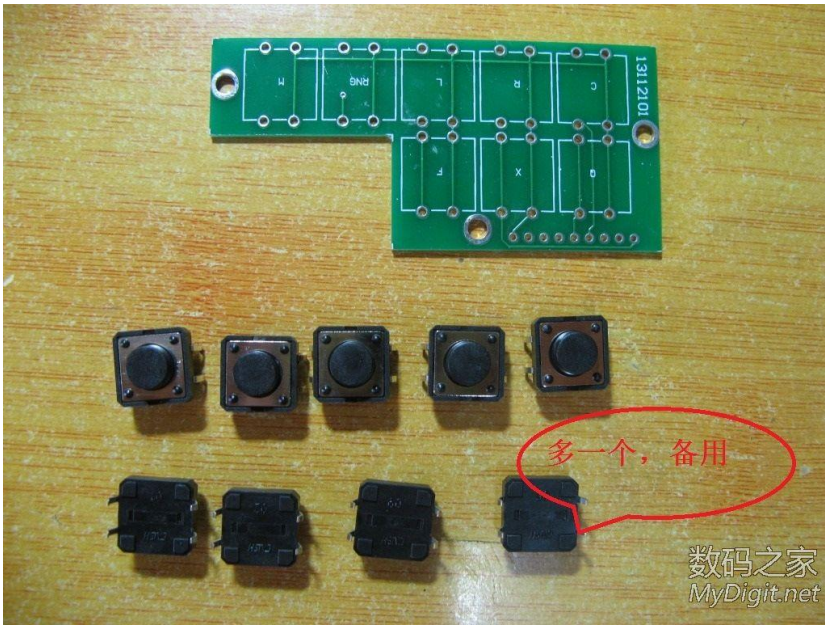




6



7



8



9



10





11



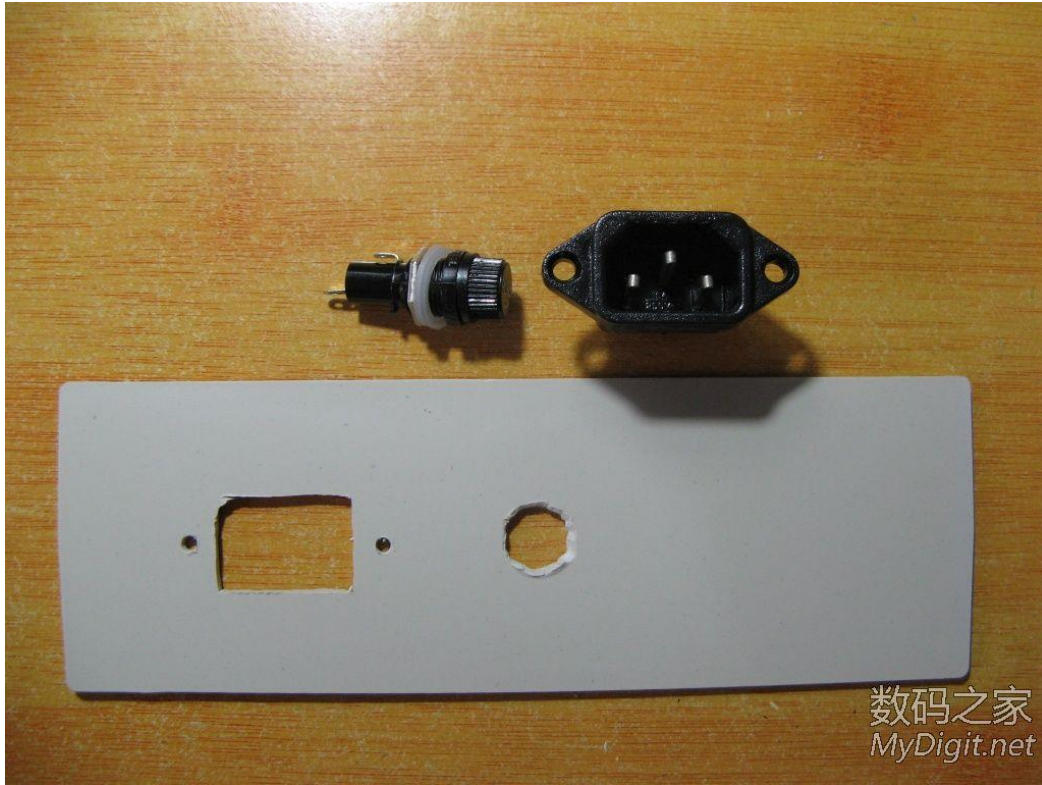
12



13

250v

0.5A



14

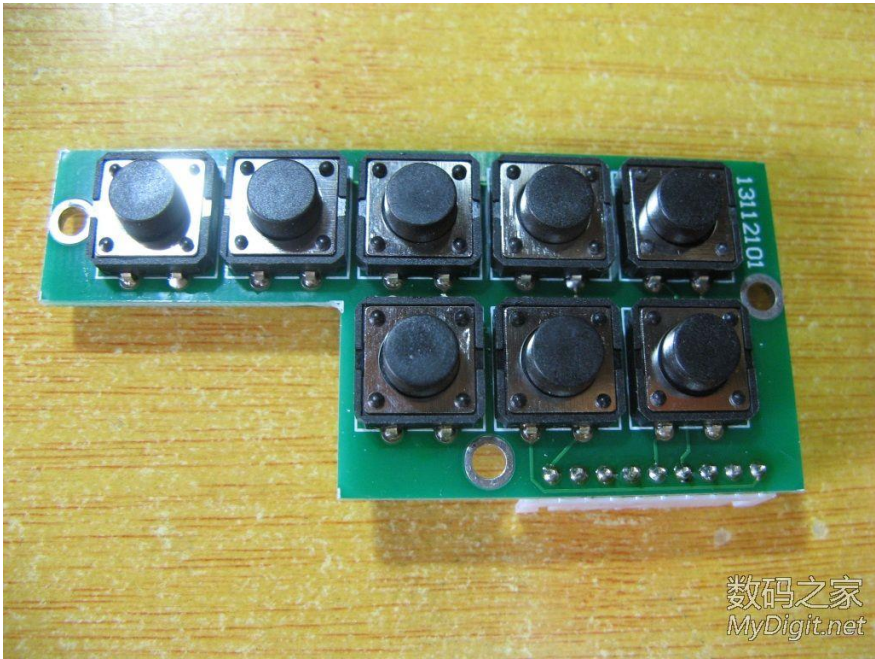


15

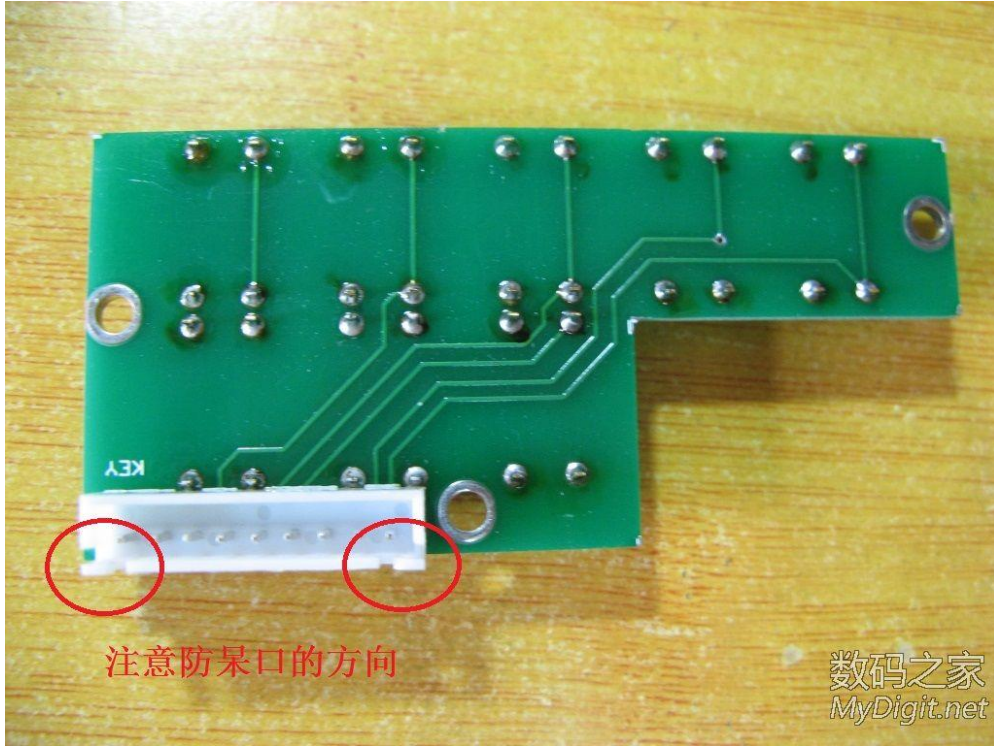




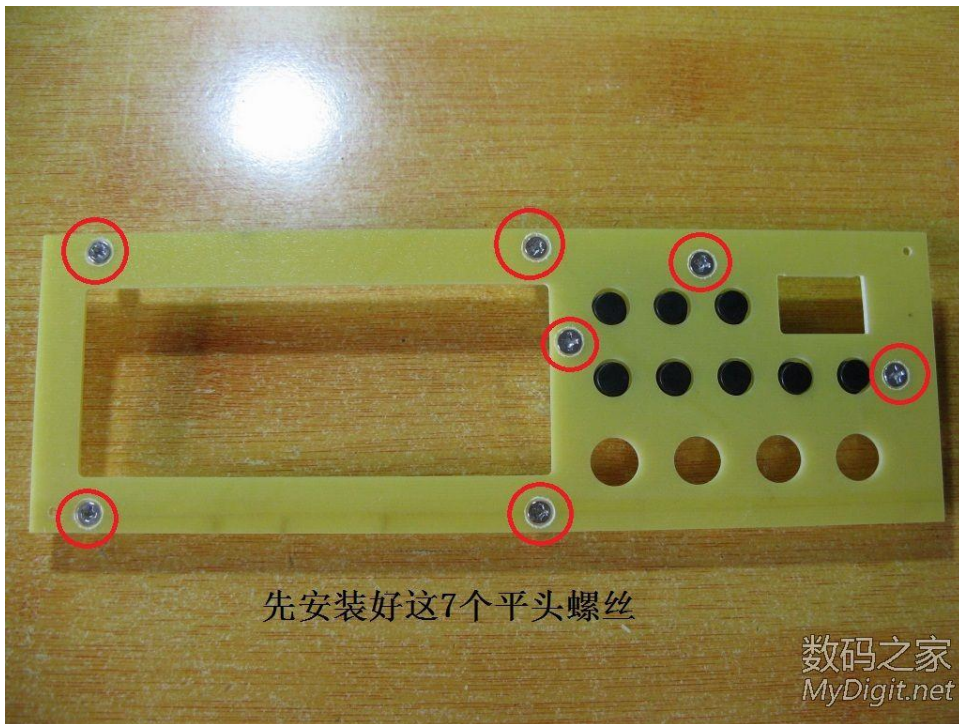
16



17

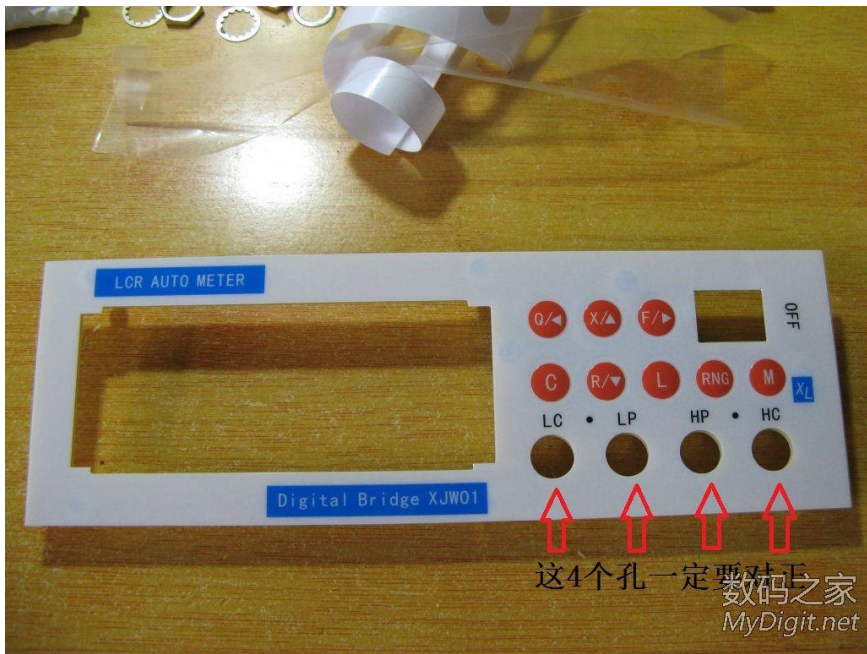


18

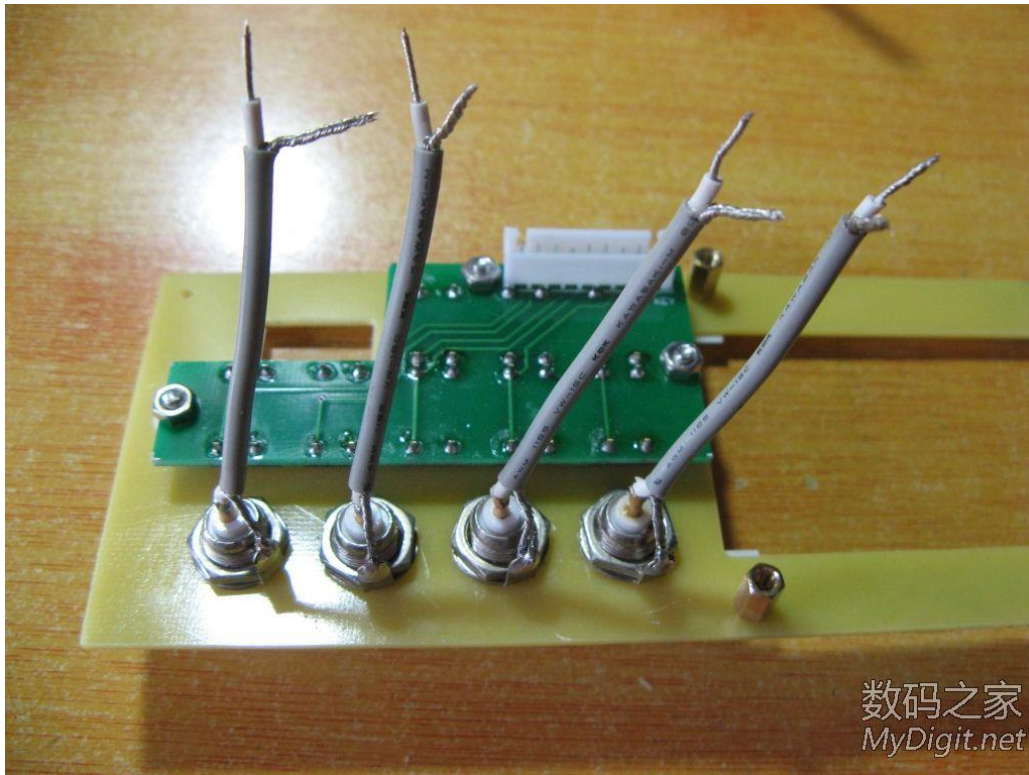


20

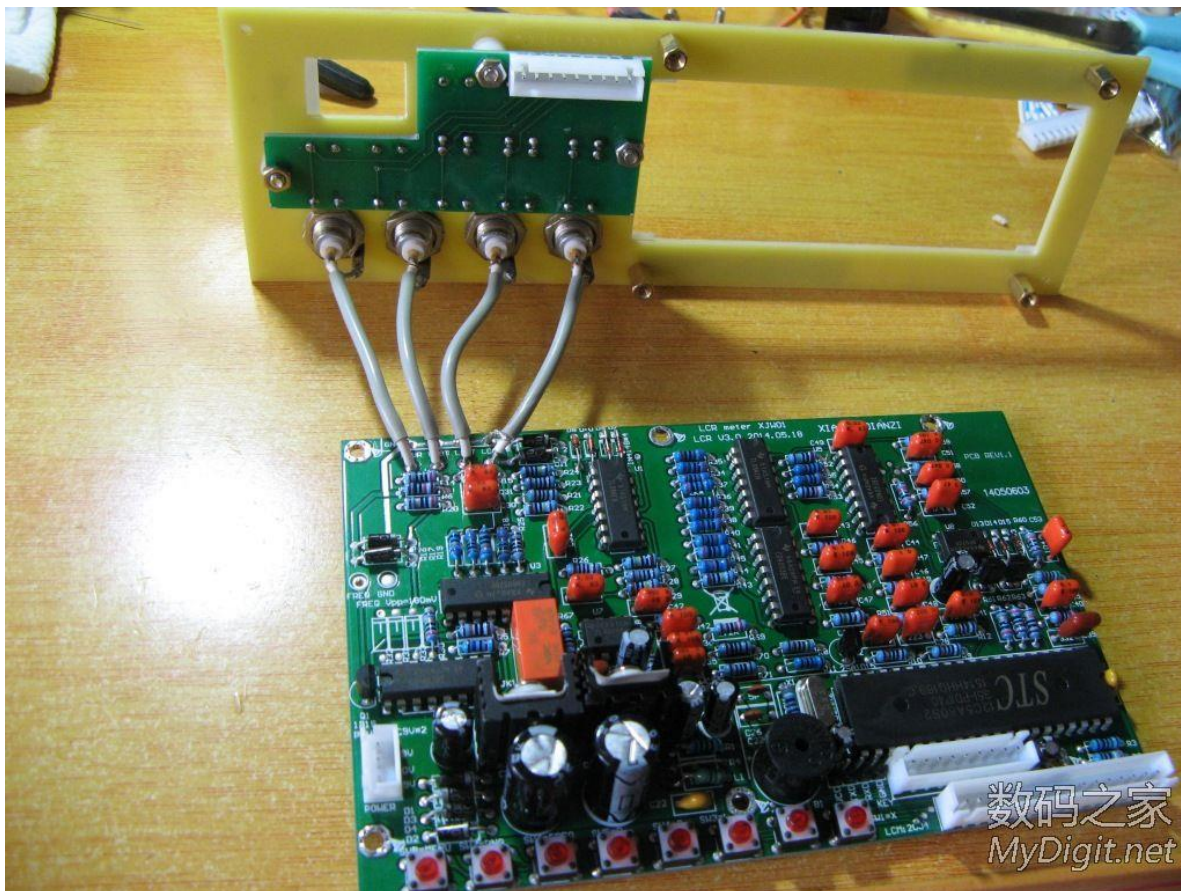




21

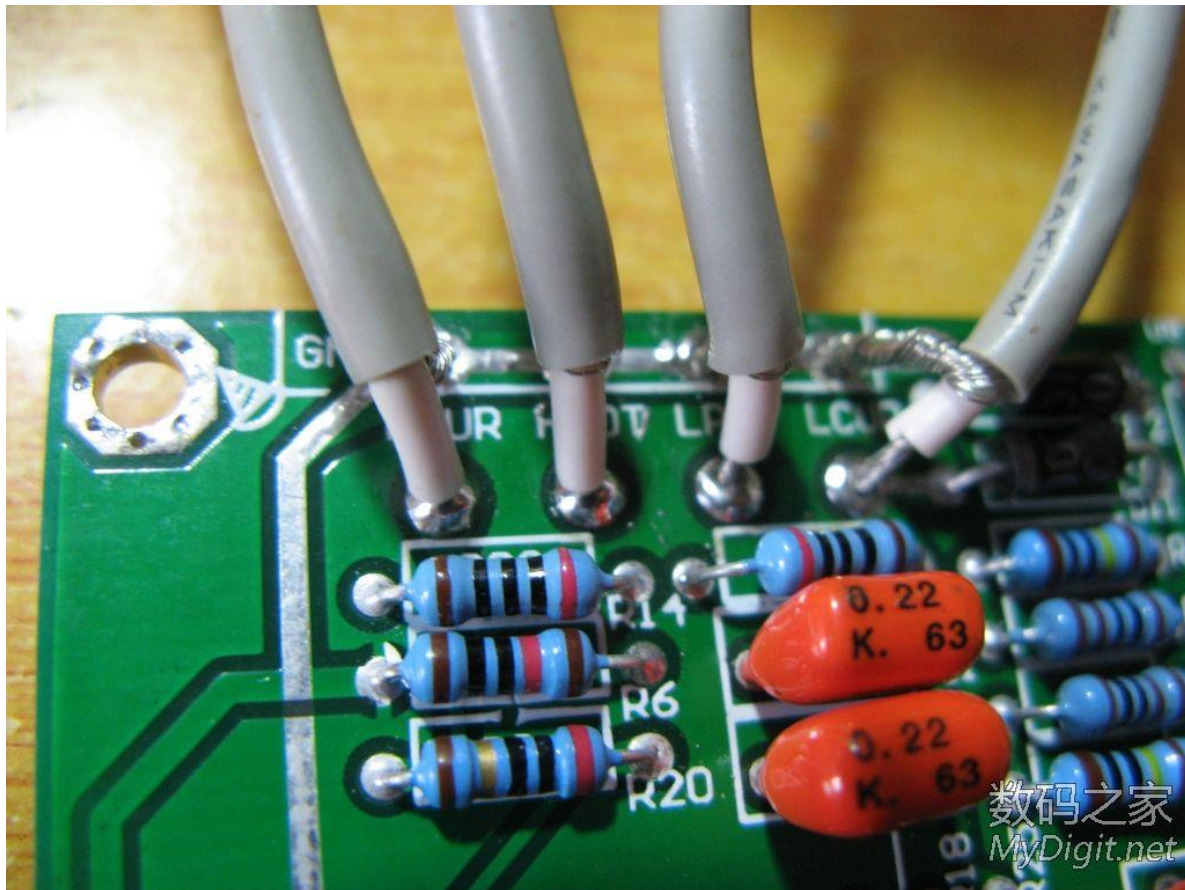




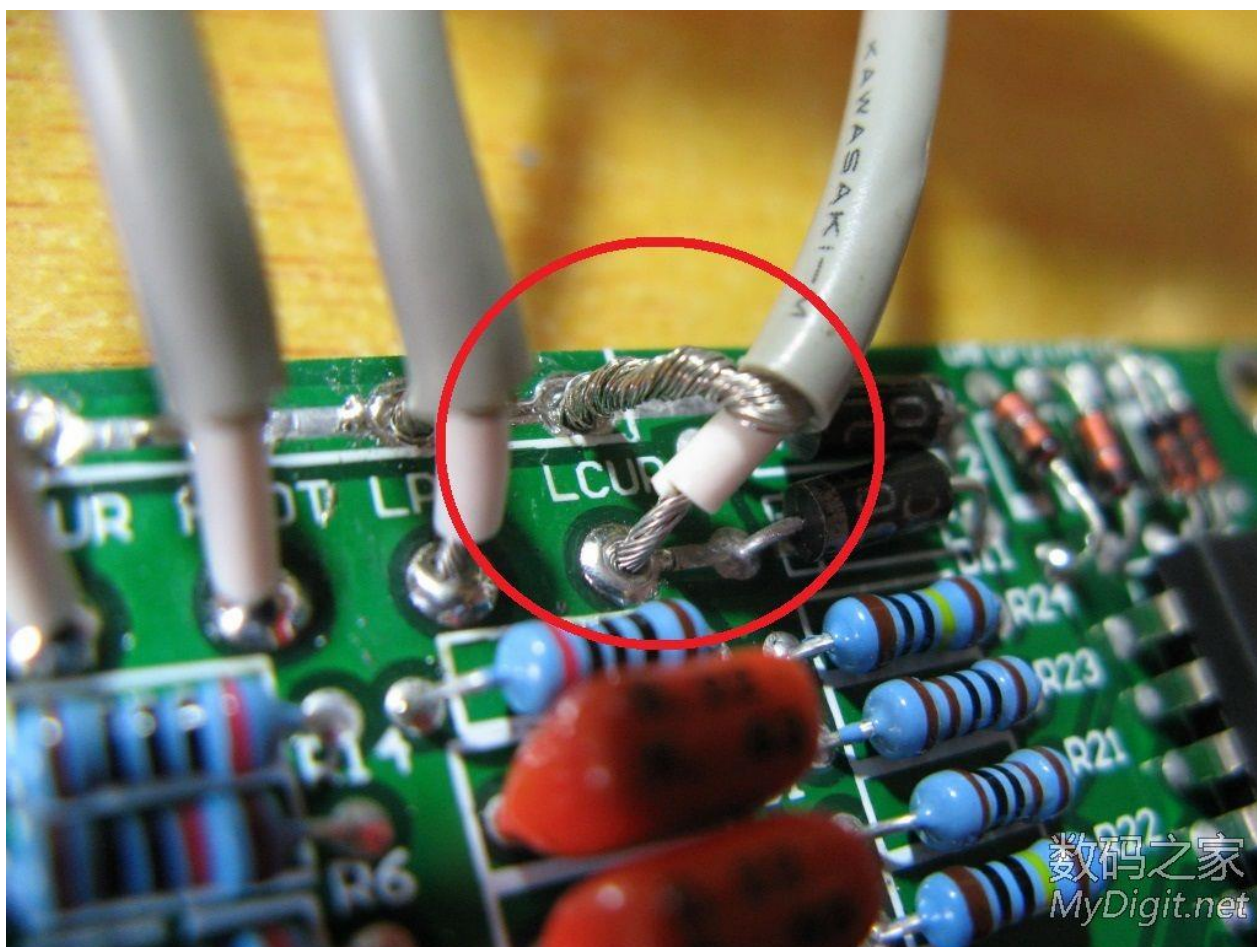




24

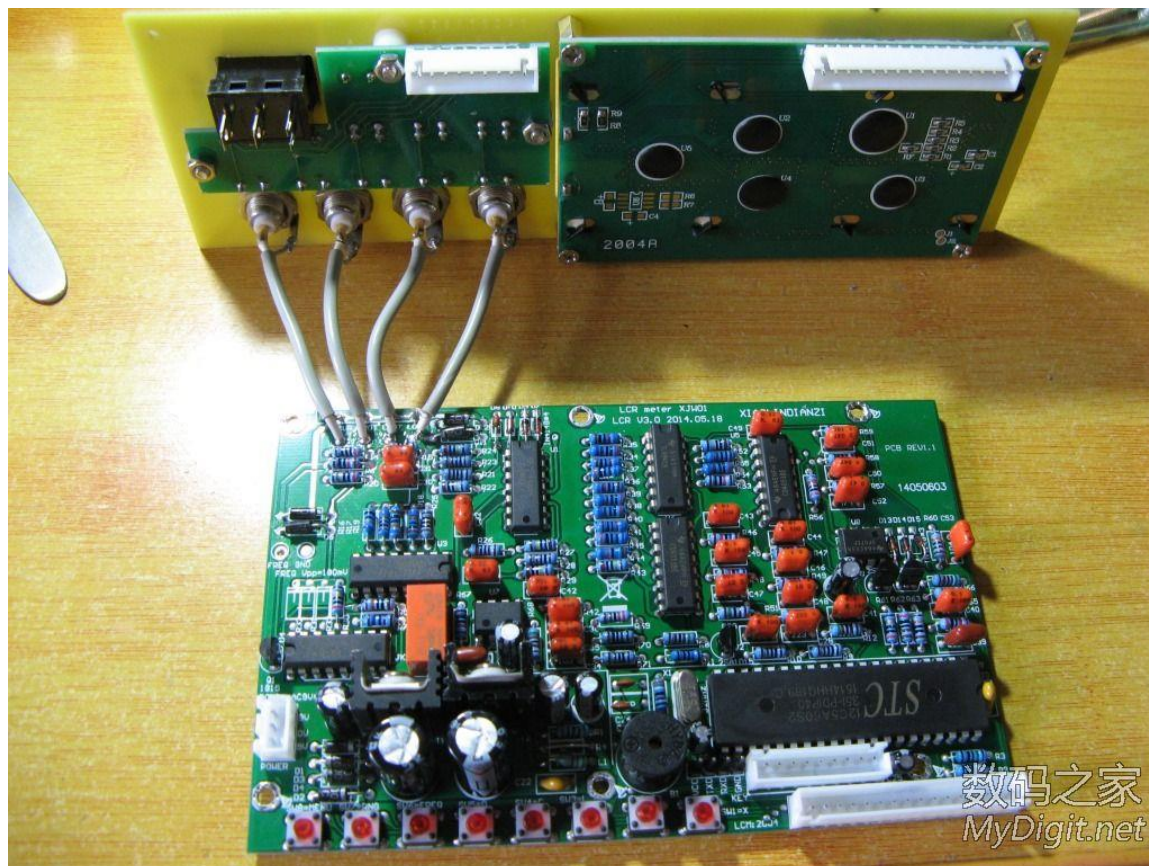


25

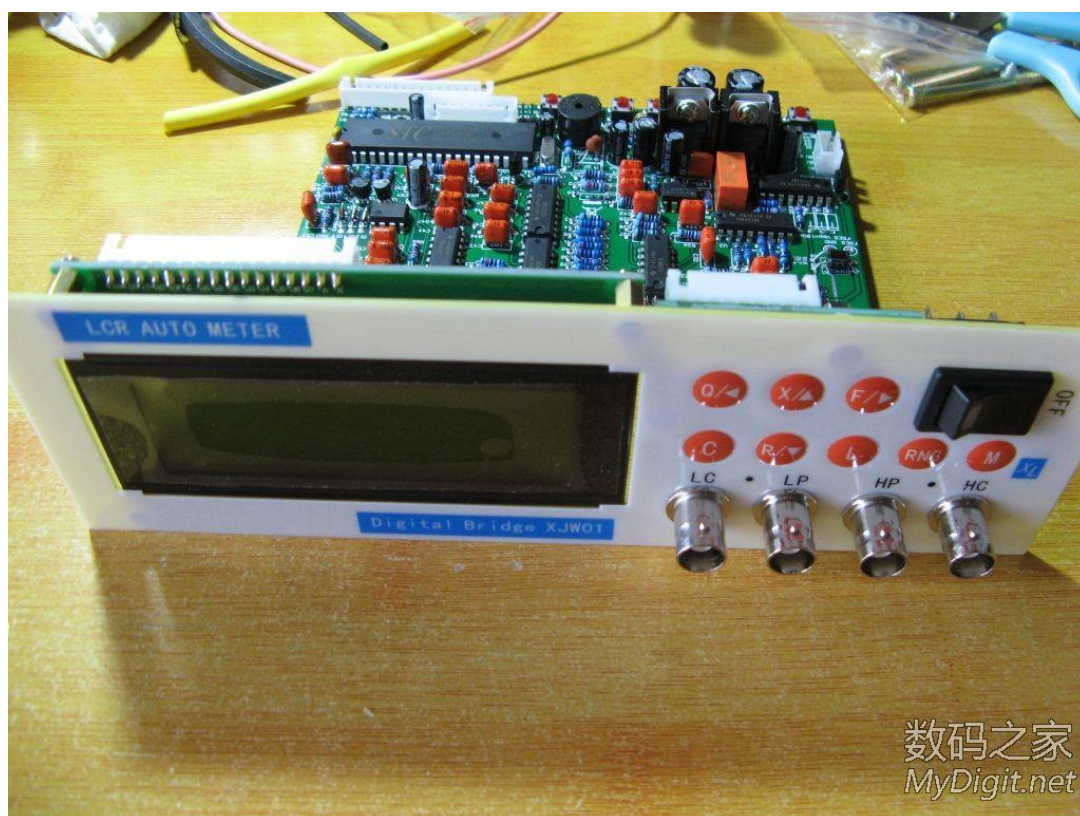




26



27





28

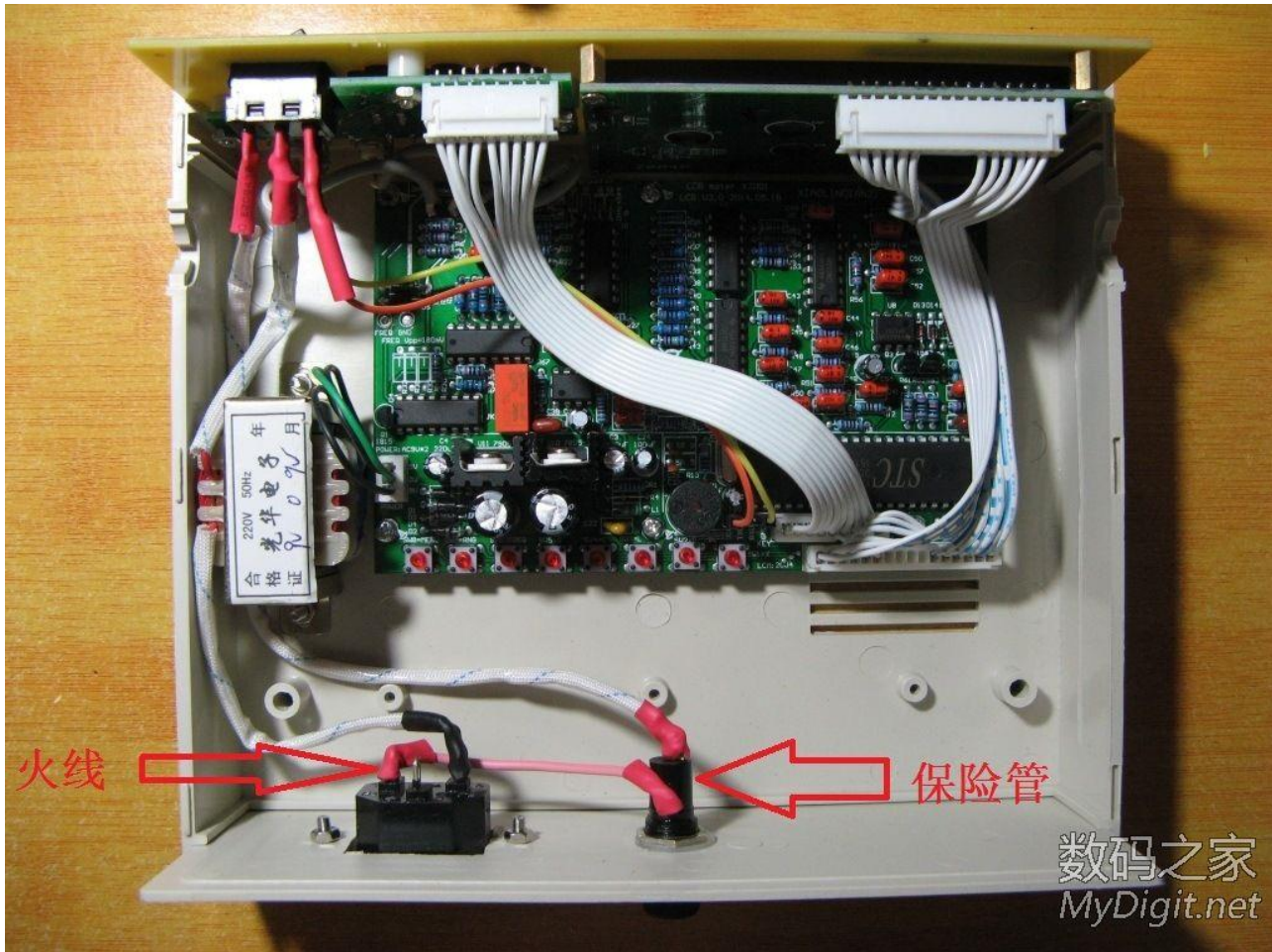


29



30





31





32



数码之家  
MyDigit.net

33



数码之家  
MyDigit.net

