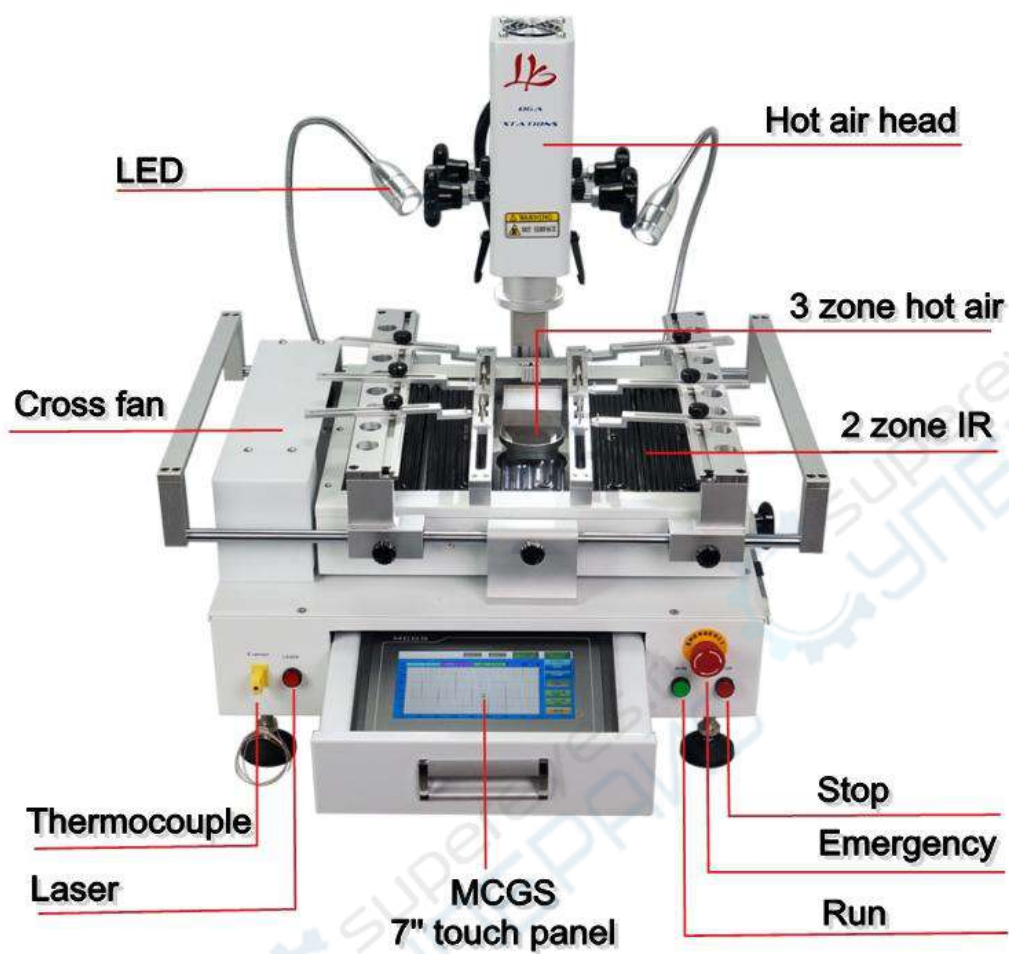


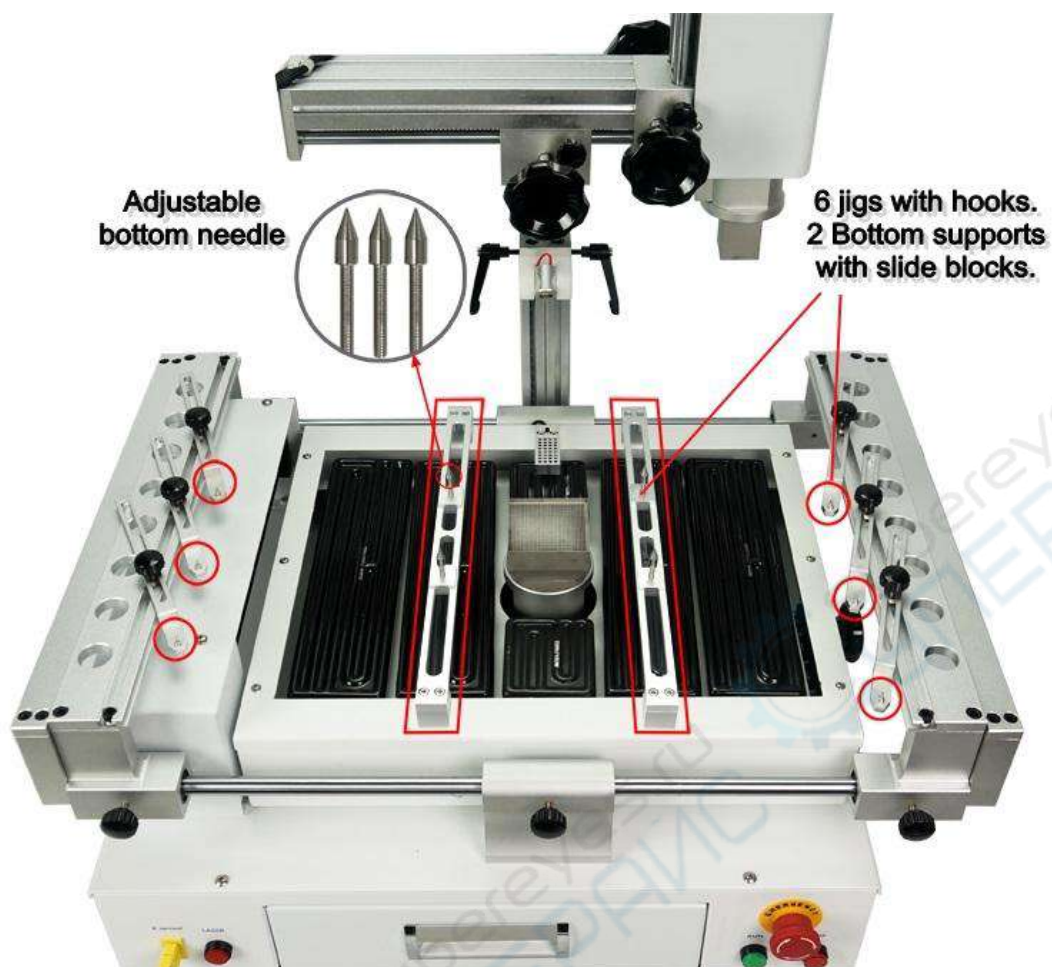
New version LY R690 V.3 BGA Rework Station solder stations 3 zones hot
air touch screen with laser point 4300W EU plug

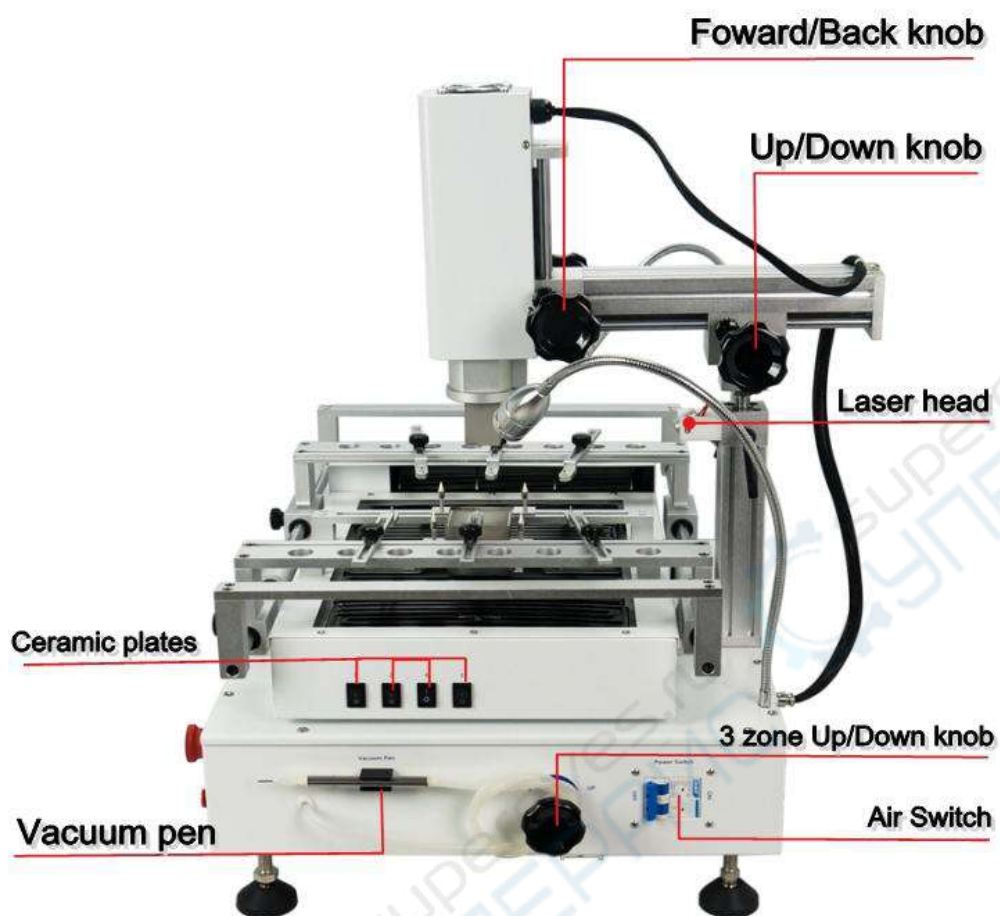


Video:

<https://www.youtube.com/watch?v=-BHIWuywaiY&feature=youtu.be>









Specs:

Model	LY R690 V.3 BGA Rework Station
Specs	
Basic Parameters	
Color	Pearl white
Zones	3 zones
Heating	Hot air,IR pre-heating
Operations	Manual,touch screen control
IR area	350*250MM
Laser align	Support
Curves	Thousands,based on SD card capacity
Power	4300W,Top 800W,bottom 800W,IR 2700W
Nozzle	9 pcs,8 top,1 bottom
Vacuum pen	Built-in vacuum pump
PCB jigs	6 pcs
Bottom support jig	2 pcs
Weight	45KG
Voltage	220V
Package	Cartoon

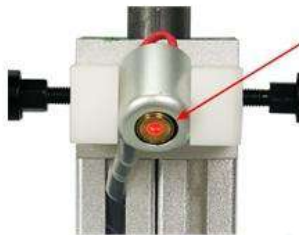
LY R690 V.3 Features:



Thousands of curve files memory.



Spiral hot air element, rised fastly, for lead lead-free works professionally.



Laser align aid support.



Big power IR pre-heater 2700W



6 lengthen jigs with hooks.
4 slide blocks with needles.



Drawer design,protect touch screen,save space.



Dual LED lights,well working shining.



Professional air switch,well protect your machine



Built-in vacuum pump vacuum pen



9 size nozzles included.



Big power cross cooling fan.



Many windows design, to make sure the cooling effect well.

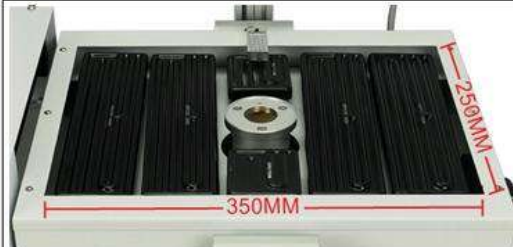


Rubber foots, prevent any shaking or vibrating.



Separated hot air head design, convenient for repair or maintenance.

Compare with earlier version:



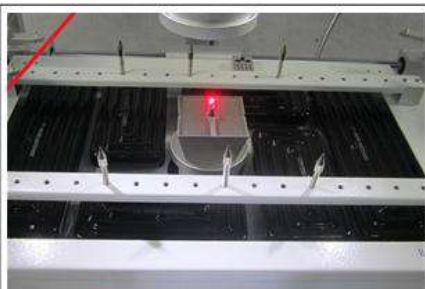
1. Bigger pre-heater area & bigger power.
New: 350x250MM
2700W



Old: 300x200MM
2400W

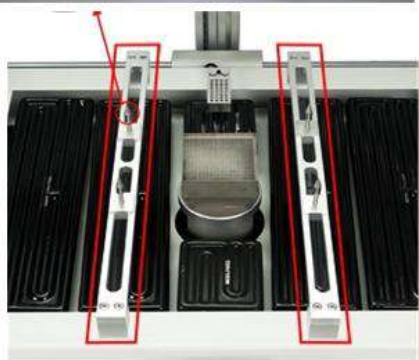


2. Bottom 3rd zone add steel net, prevent flux paste or tins drop into.

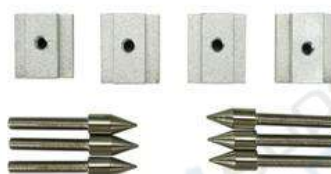


Old

Bottom support changed to slide block version, more simple for adjust.



New



Old

Wood box not easy for custom clearance, changed to cartoon-in-cartoon, total 10 layers, safe & save weight & space for customer.



New





55*55mm



55*55mm



42*42mm



38*38mm



35*35mm



30*30mm



25*25mm



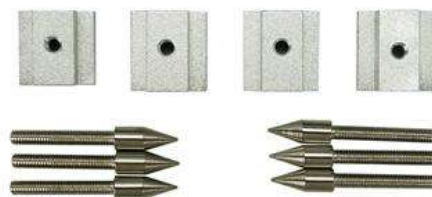
20*20mm



15*15mm



Jig x 6



Slide block x 4
Needle x 6



Vacuum pen x 1



Omega TC x 1

