

KIP-600V

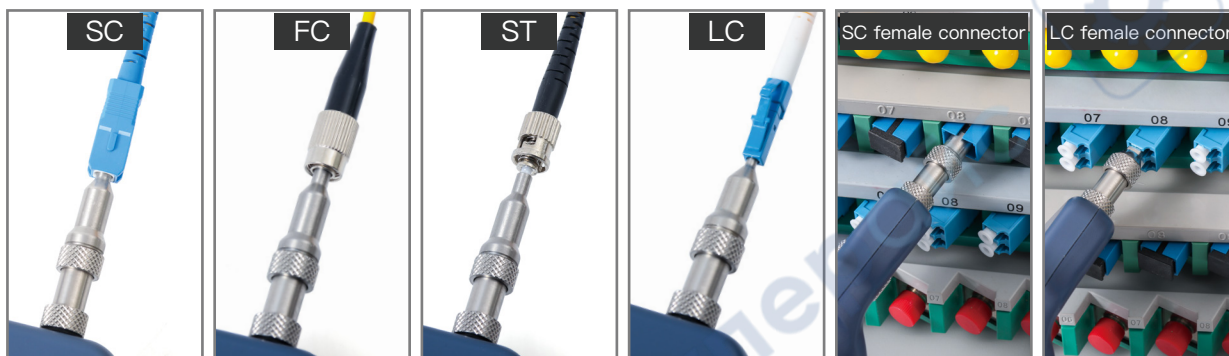
Fiber Optic Connector Inspection System



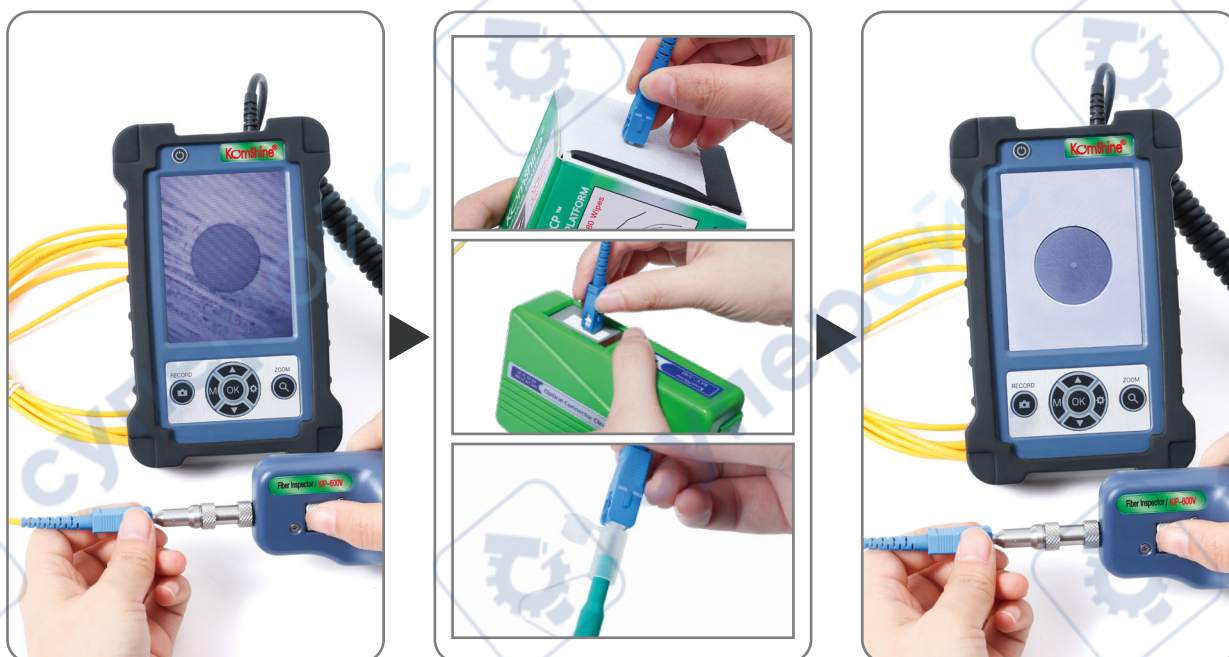
Product characteristics

- Rotary metal bracket, stable and convenient.
- Compatible / FC/SC/ST/LC/SC female connector/LC male connector
- 4000mAH large capacity lithium power, 20 hours standby.
- real time video, support extend t-flash card ,quick check the pollution degree of female connector and male conector
- 400 times magnification, the stain is clearly visible.
- 3.5 inch HD LCD display.
- 1/3 inch sensor, 300,000 effective pixels.
- removable Silicon Case, reduce the damage by collising or dropping in a certain extent
- Small size, one-handed, convenient and fast.

SUPPORT INTERFACE



USE DISPLAY



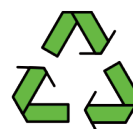
PRODUCT CHARACTERISTICS



20 hours



4000mAh



recycled

The machine is equipped with large capacity lithium-ion batteries with a capacity of up to 4000 mAh. Standby time is up to 20 hours, which is suitable for the needs of workers who go out for a long time. The machine adopts micro USB interface, charging standard is 3.7v, charging is more convenient and simple.

The angle of the bracket can be adjusted by rotation at will, which is stable and convenient. From the perspective of ergonomics, there is no need to watch on a single hand-held screen. In line with ergonomics, comfortable grip, compact, light and durable. Full enclosure design, cushioning impact friction. Close protection, anti-falling, anti-seismic. Split type design is better on protection, reduce the damage by colliding or dropping in a certain extent.



real time
video



support extend
TF card



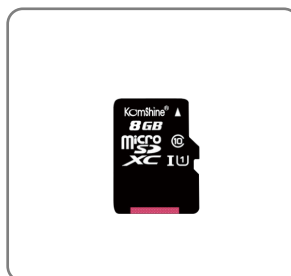
Video
playback

Real-time video recording and expansion of TF card, convenient and fast recording of measurement information. Support data playback to facilitate inspection and data statistics. The panel design is concise, the operation is simple and practical, and the use is more humanized.

PRODUCT SPECIFICATION:

| | | | |
|----------------------|----------------|-------------------------|-------------------------|
| KIP-600V probe | | Magnification | 400X |
| | | Resolution(μm) | surpass 1.0 |
| | | Visual range(μm) | 0.316*0.285 |
| | | Dimension(μm) | 235(W)*95(D)*30(H) |
| | | Image Sensor | 1/3 480 |
| | | Storage Temperatrue | -18℃~35℃ |
| | | Weight(kg) | 0.11 |
| 3.5-inch LCD display | Image | Image size(mm) | 22 |
| | | Pixels | 307200 |
| | Video | Frequency | 25FPS |
| | | LCD screen | 960*240 LCD |
| | | Video output mode | NTSC/PAL |
| | | Playback Format | AVI |
| | User interface | Compatible memory cards | TF |
| | | Capacity | 8GB |
| | | USB | 1.1/2.0 |
| | | Hard disk format | FAT32 |
| | Power supply | AC adapter | DC 5V/2A |
| | | Internal Battery | Lithium battery 4000Mah |
| | | Media Player | ≥7 |
| Weight(kg)/W*D*H(mm) | | 0.085/78*22*56 | |

PRODUCT LIST:



* Komshine reserves the right to improve, enhance, or modify the features and specifications of KomShine products without prior notification.

* Company and product names appearing in this catalogue are registered marks or trademarks of respective companies.

* This catalogue is printed using environmentally friendly paper and ink.