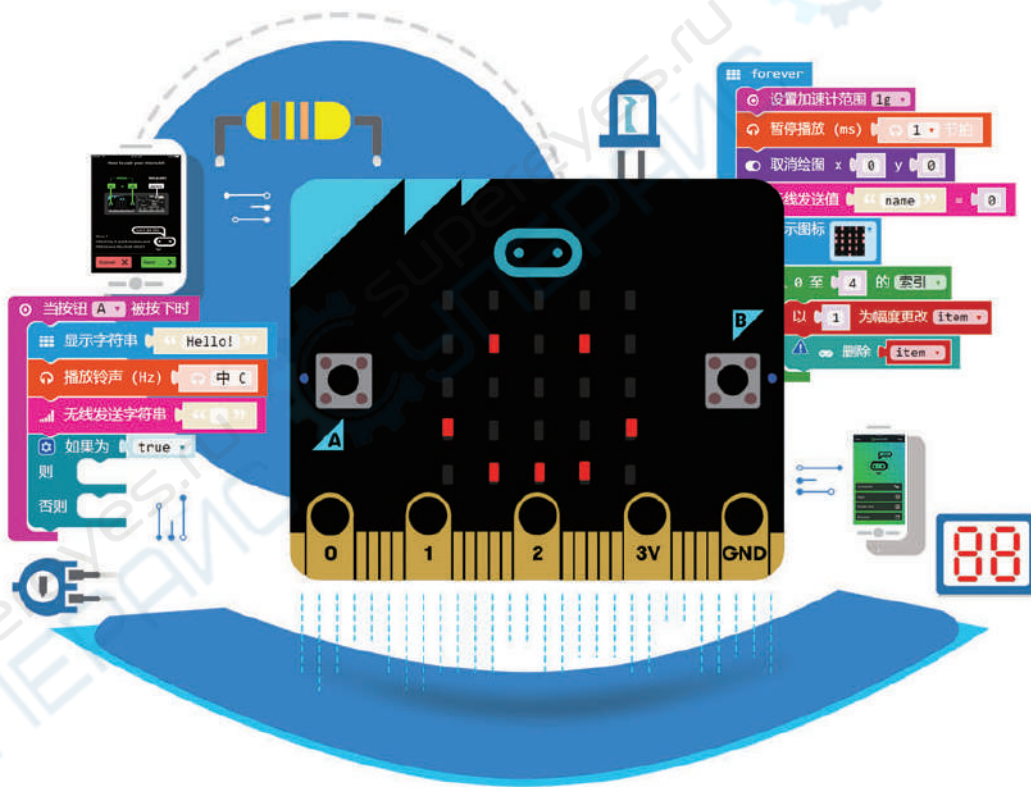




# micro:bit starter kit

## Manual



Shenzhen Yahboom Technology Co., Ltd.

- ① Please read this manual carefully before use
- ② The company reserves the right to explain the instructions
- ③ Product appearance, please prevail in kind
- ④ Please keep it well after reading

## 1. Use statement

1.1 After the user receives the product, please check the item according to the “Packing List” of the getting started guide.

1.2 Children under 12 years of age need to be accompanied by parents.

1.3 Users should install and use products according to the introductory guide and video tutorials provided by the product.

1.4 Crocodile clips, scissors and other tools need to be used in some experiments of micro:bit kit, so safety is needed during use.

1.5 The product structure and shape have been applied for the national patent counterfeiting. The copyright of this product is owned by our company, and it will be investigated for legal liability if it is not authorized to plagiarize or spread.

2.The following operations result in damage. Our company will not undertake any maintenance cost.

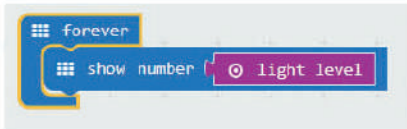
2.1 This product is a hardware for building education, which prohibits welding transformation of micro:bit board, otherwise it will not enjoy quality assurance service.

2.2 Micro:bit kit is not waterproof product, please do not use it in water, otherwise it will lead to circuit board short circuit and burn the circuit board. The company does not bear the cost incurred during the maintenance process.

2.3 The micro:bit kit uses the AAA (battery No.7) provided by the company. If you use batteries of other voltages as the power supply battery for this kit and cause the product to burn out, the company will not bear the costs incurred during the repair process.

4. After downloading Lesson 8, why both the light and the light on the dot are the sun/moon?

A: This has a certain relationship with the light intensity. It may be that the light intensity is not enough/too high. It is recommended to use it first.



This statement records the value of the light without illumination and the value of the light, and then takes the intermediate value to replace the value in the program. The specific tutorial can be found in Lesson 8.

5. Why does the small speaker experiment have no sound?

A: It may be that the sound is small. You may want to see the obvious phenomenon in the experiment by replacing it with a headset connection. The specific headset connection method can be found in Lesson 6.

6. Why did the Electronic organ experiment press down without sound?

A: The wiring of this experiment is more complicated. It is recommended to use a button first, ring a note and then connect it downwards.

## 7. Why is the sound sensor uncontrolled?

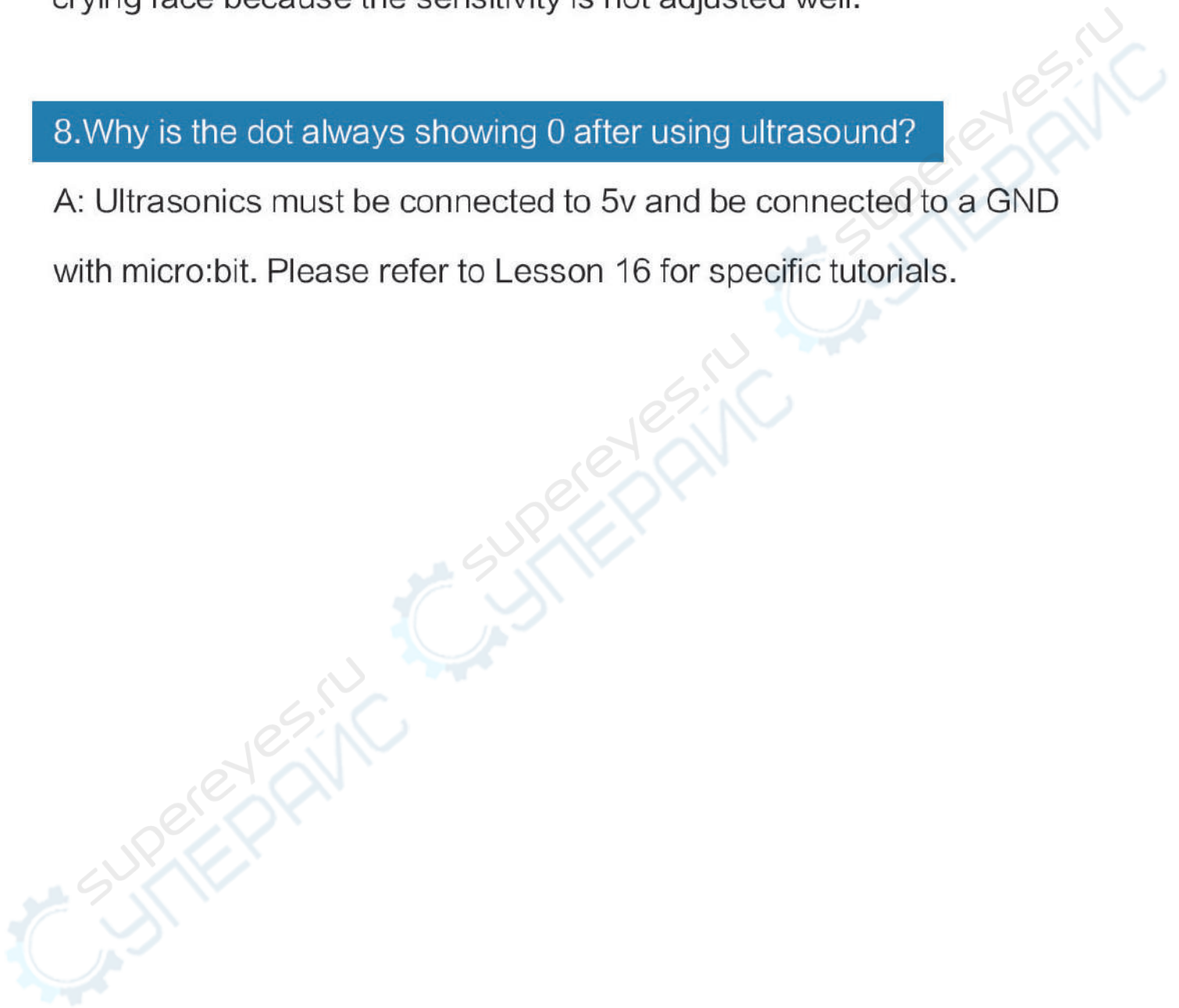
A: Before the sound sensor is used, it needs to be debugged.

A screwdriver is needed to adjust the sensitivity of the sound sensor.

Lattice has always been a smiling face or the dot often turns into a crying face because the sensitivity is not adjusted well.

## 8. Why is the dot always showing 0 after using ultrasound?

A: Ultrasonics must be connected to 5v and be connected to a GND with micro:bit. Please refer to Lesson 16 for specific tutorials.



# Packing list



BBC  
Micro:bit\*1



Micro:bit  
breakout\*1



Sound  
Detection  
Sensor\*1



JoyStick  
Breakout  
Module\*1



Motor fan\*1



RGB LED\*1



Motor driver  
module\*1



Touch  
sensor  
switch  
module\*1



Vertical  
ultrasonic  
module\*1



5v power  
supply\*1



Game  
console  
shell\*1  
Screw\*3



Rotary  
potentiometer  
\*1



Infrared  
receiver\*1



Infrared  
emitter\*1



Micro USB  
cable\*2



AAA battery  
box\*1



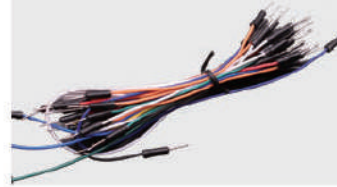
Large Size  
Breadboard\*1



Active  
buzzer\*1



LED\*6



Flexible  
Breadboard  
Jumper  
Wires



Male to male  
dupont  
wire\*20



Test lead  
with alligator  
clips



big size  
button\*8



SG90 servo\*1



27k resistor\*5



100ohm  
resistor\*5



AAA  
battery\*2



220ohm  
resistor\*10

E-mail:

[sales@yahboom.com](mailto:sales@yahboom.com)

Address:

Room 306, C Building, Guanlong Comprehensive building, Guanlong Road,  
Xili Sub-district, Nanshan District, Shenzhen City