

# Automotive Tablet Oscilloscope

## ATO Series



-   
Auto Diagnostics
-   
IOS
-   
Android
-   
Touch Screen
-   
PC software
-   
Video Record
-   
HDMI
-   
Wi-Fi
-   
USB

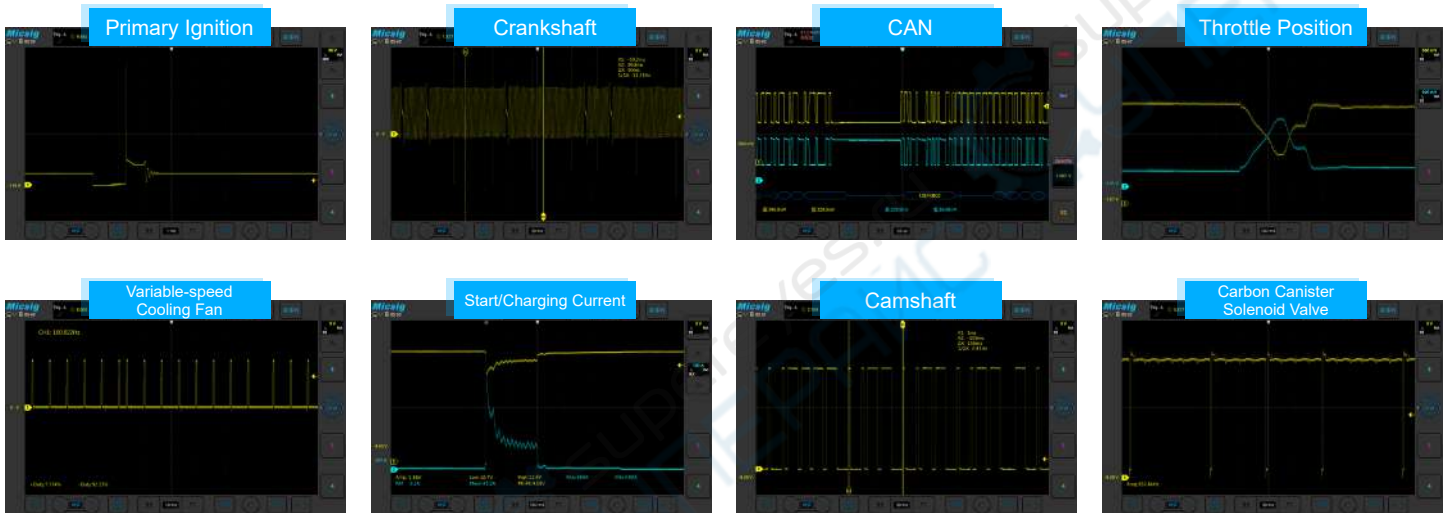
Model	ATO1004	ATO2004	ATO3004
Bandwidth	100MHz	200MHz	300MHz
Analog Channels		4	
Sampling Rate (Max.)	1GSa/s		2GSa/s
Memory Depth	110Mpts		220Mpts
Waveform Capture Rate (Max.)	78,000 wfms/s		300,000 wfms/s
Support Tests	High Pass / Low Pass (to 30kHz)		High Pass / Low Pass (to 30Hz)
Segmented storage	N/A		Support to capture max 10,000 events
Support Tests	Charging/Start Circuits, Sensors, Actuators, Ignition, Networks (CAN L/H, CAN FD, LIN, Flexray, K line), Combination Tests		
Interfaces	Wi-Fi, USB 3.0/2.0 Host, USB Type-C, Grounding, HDMI, Trigger out		
Display	Industrial 10.1" TFT-LCD (1280*800), 11*10 divisions		
Dimension / Net Weight	265*192*50mm / 1.9kg (with battery)		
Battery / Duration	7.4V, 7500mAh / 5H		7.4V, 7500mAh / 2H

## Features

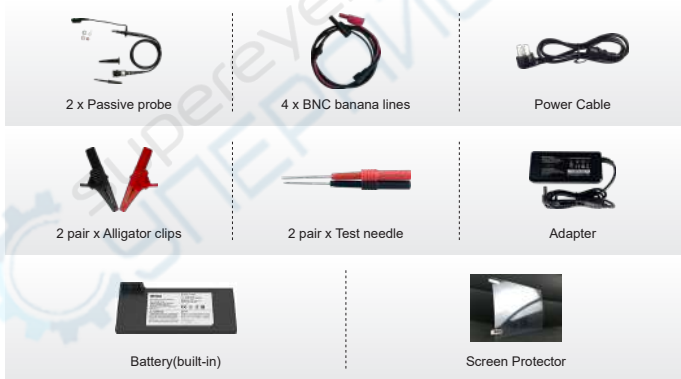
- Portable tablet design with all-in-one functions
- Comprehensive auto diagnostic presets
- Powerful signal capture and analysis capabilities
- Support PC & Smartphone remote control
- HDMI function for training & demonstration
- Life-long free software online upgrade



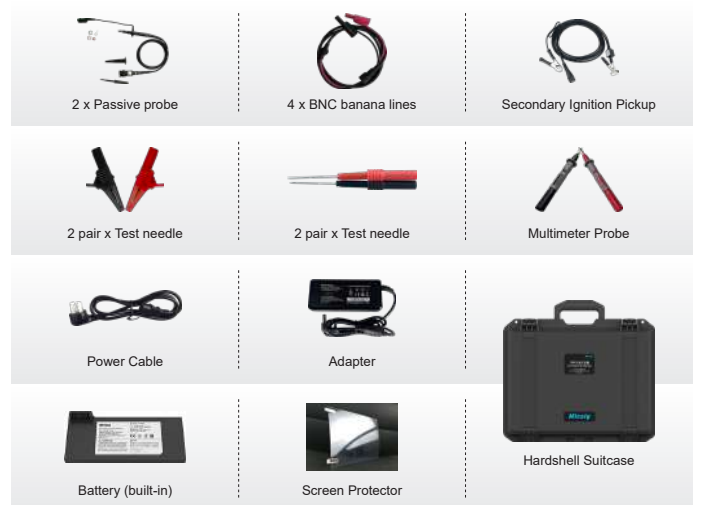
## References



## Standard Kit



## Master Kit



**Micsig**

Shenzhen Micsig Technology Co., Ltd.

Add: 1F, Huafeng International Robot Industrial Park, Hangcheng Rd, Bao'an District, Shenzhen, Guangdong, China