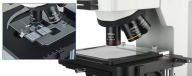




## A13.0909 Metallurgical Microscope Transmit & Reflect, Reflect

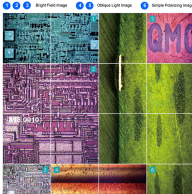


### Product Details

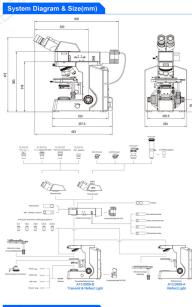


### Observation Effect

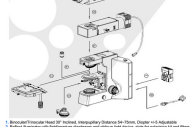
1 2 3 Bright Field Image 4 5 Oblique Light Image 6 Simple Polarizing Image



### System Diagram & Size(mm)

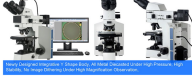


### System Diagram & Parts



1. Trinocular trinocular head 30° inclined, interpupillary distance 64-75mm, Diopter ±5 Adjustable, Alpha Koehler illumination system.
2. Reflected illuminator with field aperture diaphragm and oblique light device, also for polarizing slit and filters, Alpha Koehler illumination system.
3. 1. Comparing with other LED, single 5W/10W with warm white light (2800-3200K) reduces the fatigue on observer's vision at the extreme.
4. 2.2 With pull-out devices for adjusting the system of field and aperture diaphragm, stray light can be eliminated by expanding or shrinking the illumination zone.
5. 2.3 Simple polarizing observation is available with plug-in polarizer set. More clear images are here with different filters.
6. The highest sample can be tested is 20mm with transmitted & reflected frame while 15mm high sample is available with reflected frame, as the stage can be dropped 10mm by loosening the screws in the stage holder.
7. All screwdriver for head fix screws placed in the frame, making the best of the available space and improving your working efficiency.
8. Stop limit device is helpful to avoid the damage caused by impact between sample and high power objective lens.
9. Using the outstanding conducer system of new designed A13.0909, much more transmitted light can be through with bigger numerical aperture and stronger intensity.

### Product Specification



Newly Designed Integrative 1 Shape Body, All Metal Deckered Under High Pressure, High Stability, No Image Distortion Under High Magnification Observation.

A13.0909 Metallurgical Microscope Specification		A	B
Optical System	Infinity Color Corrected Optical System		
Head	Compensation Trinocular Head 30° Inclined, 360° Rotatable, Interpupillary Distance 64-75mm, Splitting Ratio R:T=100:0 or 0:100, Diopter ±5 Adjustable		
Eyepiece	High Eye-point Wide Field Plain Eyepiece PL15x22mm		
Objective	LWD Infinity Plan Achromatic Metallurgical Objectives Or LMPair Series T5, 10x/12.5mm 16x LMP1, 10x/0.2, WD12.2mm 20x LMP1, 10x/0.45, WD12.2mm 40x LMP1, 10x/0.85, WD7.1mm		
Nosepiece	5 Holes Revolving Nosepiece, Inward		
Focusing	Coaxial Focus System With Upper Limited And Tension Adjustment, Coarse Range 25mm, Fine Precision 0.002mm		
Working Stage	For Reflected Light, Double Layer Mechanical Stage 115x145mm, Moving Range 10*12mm, 8Y Moving Coaxial Adjustment With Metal Plate Up/Down Range Accept 20mm High Sample For Transmitt & Reflected Light, Double Layer Mechanical Stage 115x145mm, Moving Range 10*12mm, 8Y Moving Coaxial Adjustment With Glass Plate Up/Down Range Accept 20mm High Sample		
Light Source	Reflected Light, Lamp House With Single 50W LED, Warm Color, Koehler Illuminator With Oblique Light Device, Center Adjustable Field And Aperture Diaphragm Interference Filter Blue ~402nm, Green 520~517nm, Red 630~710nm, White Balance Transmitted Light, Lamp House With Single 10W LED, Warm Color Filter Yellow, Neutral, 4555, LED		
Condenser	N.A. 0.9 Strong Dual Aspherical Condenser For Transmitt Light, With Center Adjustable Aperture And Diaphragm		
Power	Wide Range Voltage 100-240V AC 50/60Hz		
Optional Accessories			
Eyepiece	High Eye-point PL15x22mm with Micrometer, Diopter Adjustable	A01-0803-1012R	
	High Eye-point PL15x22mm	A01-0803-1010	
Objective	100X LMP1, 10x/0.8, WD7.1mm	A01-0804-100	
	16x C-Albert, Focus Adjustable	A01-0805-10	
CCD Adapter	8.80x, For 1/3" C-Albert, Focus Adjustable	A01-0806-10	
	8.81x, For 2/3" C-Albert, Focus Adjustable	A01-0805-07	