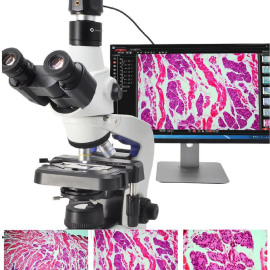


**A59.4910**

USB2.0 CMOS Digital Camera, 5.0M, Fix USB Cable

**Product Application**

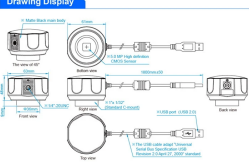
A59.4910 Microscope Camera can be connected to any biological microscopes, stereo microscopes, metallographic microscopes, etc. It has advantages of high frame rate, very nice color performance, clear image, convenient storage, widely used in industrial inspection, teaching research, clinical test, material analysis, machine vision, etc.

- 5.0MP High Quality CMOS Sensor
- Real Time Preview, Image/Video Capture
- Professional Measuring & Analysis Software
- Support Windows & Mac System
- For Microscope C-Mount & Eyepiece Use

**Pathological sections under different objectives****Paramecium sections under different objectives****Dog taste buds sections under different objectives****Rat liver sections under different objectives****Models Optional****A59.4910**
with standard C-Mount**A59.4910-M05**
with standard C-Mount and
0.5x eyepiece tube adapter set
(for eyepiece tube dia 23.2mm,30.0mm,30.5mm)**Multi-angle****Product Specification**

- A closed structure with color filter built-in, preventing dust from CMOS sensor
- Designed with commonly used tripod mount 1/4-28A for widely use
- Reliable electronic double plates design to resolve over heat problem after long working time
- 5VDC power supply from USB port no need additional power adapter
- 3 Years Quality Warranty!

Hardware Configuration	
Imaging Sensor	Colorful
Scan Patterns	Scan Line By Line
The Maximum Resolution	2562 x 1944(5,036,840 Pixels)
Sensor Optical Format	1/2.5" (5.70mm(H) x 4.28mm(V), Diagona 7.13mm)
Pixel Size	2.2µm x 2.2µm
Dynamic Range	70.5dB
ADC	12-bit, 8-Bit R.O.S to PC
SNRmax	38.5dB
Spectral Characteristics	380-650nm
Preview Modes	22FPS@2592x1944, 30FPS@1920x1080, 1600x1200 40FPS@1280x960, 1280x720, 1024x768, 800x600, 640x480
Binning Modes	1 x 1, 2 x 2
Exposure Capability	3.9ms - 320ms, Automatic And Manual
White Balance	Automatic And Manual
Software Interface	DirectShow
Capture Modes	Photo And Video (MJPEG and AVI)
Software Environment	
Operation System	Microsoft Windows XP / 7 / 8 / 8.1 / 10 (32 & 64 bit)
Computer Configuration	CPU: Equal Or More Than The Second Generation Intel Core 2.8GHz
	Memory: 2G Or More
	USB Port: USB2.0 High Speed Port Or Compatible Port
Displayer	Support 17 Inches Or Larger
Operating Environment	
Operating Temperature	-10°C - 50°C
Storage Temperature	20°C - 60°C
Operating Humidity	30-80%RH
Storage Humidity	10-60%RH
Power Supply	Direct-current, Supply By USB Port

Drawing Display**Product Packing****OPTO-EDU****How Camera Connect To Microscope****1. To Trinocular Microscope On Straight Photo Tube**

Trinocular Head

2. To Trinocular Microscope On Eyepiece Photo Tube

Trinocular Head

3. To Binocular Microscope On Eyepiece Tube

Binocular Head

