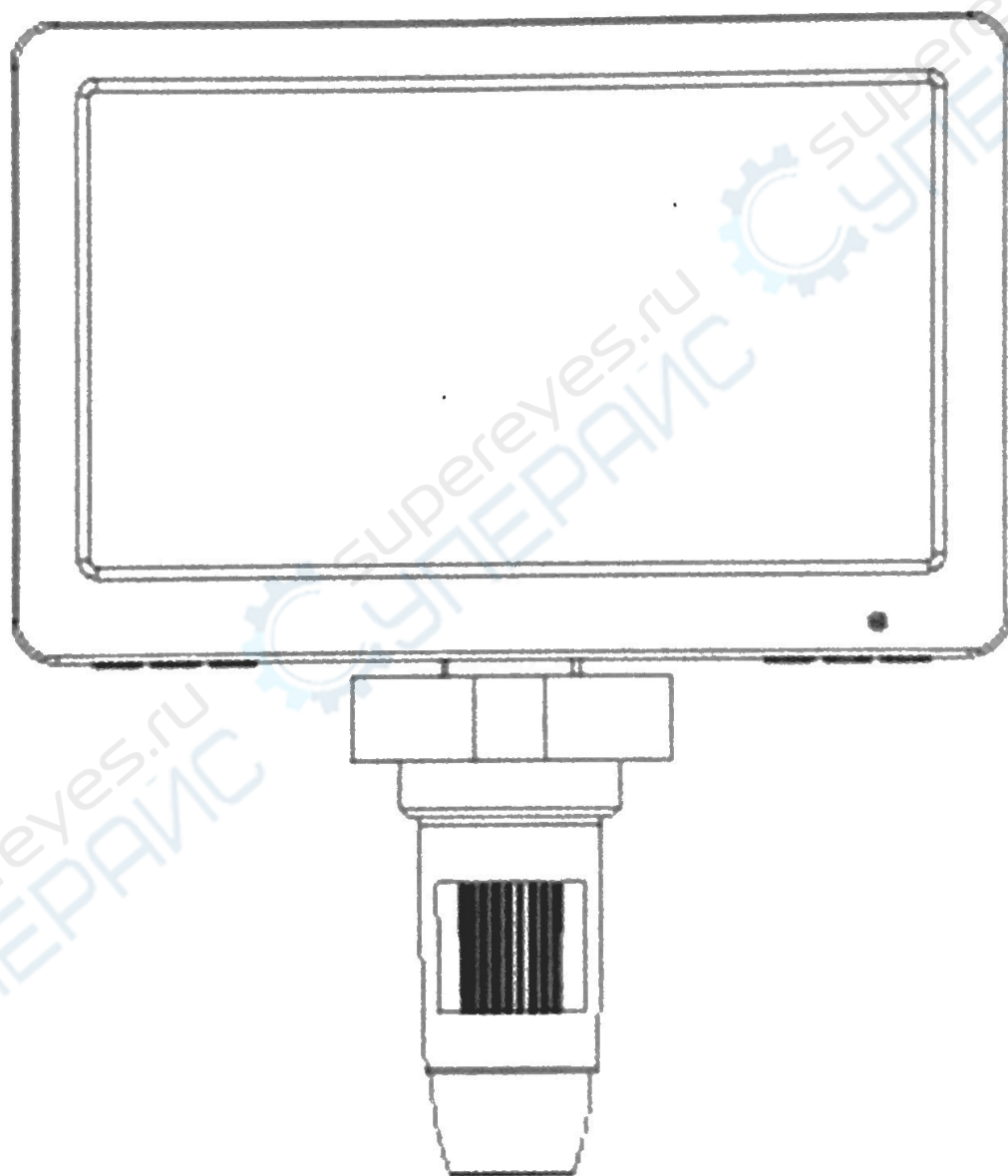


# Digital Microscope 9

## Portable microscope instruction manual



Thank you for choosing to use this product, please read this manual carefully before use.

# Counterfeit Basic Information

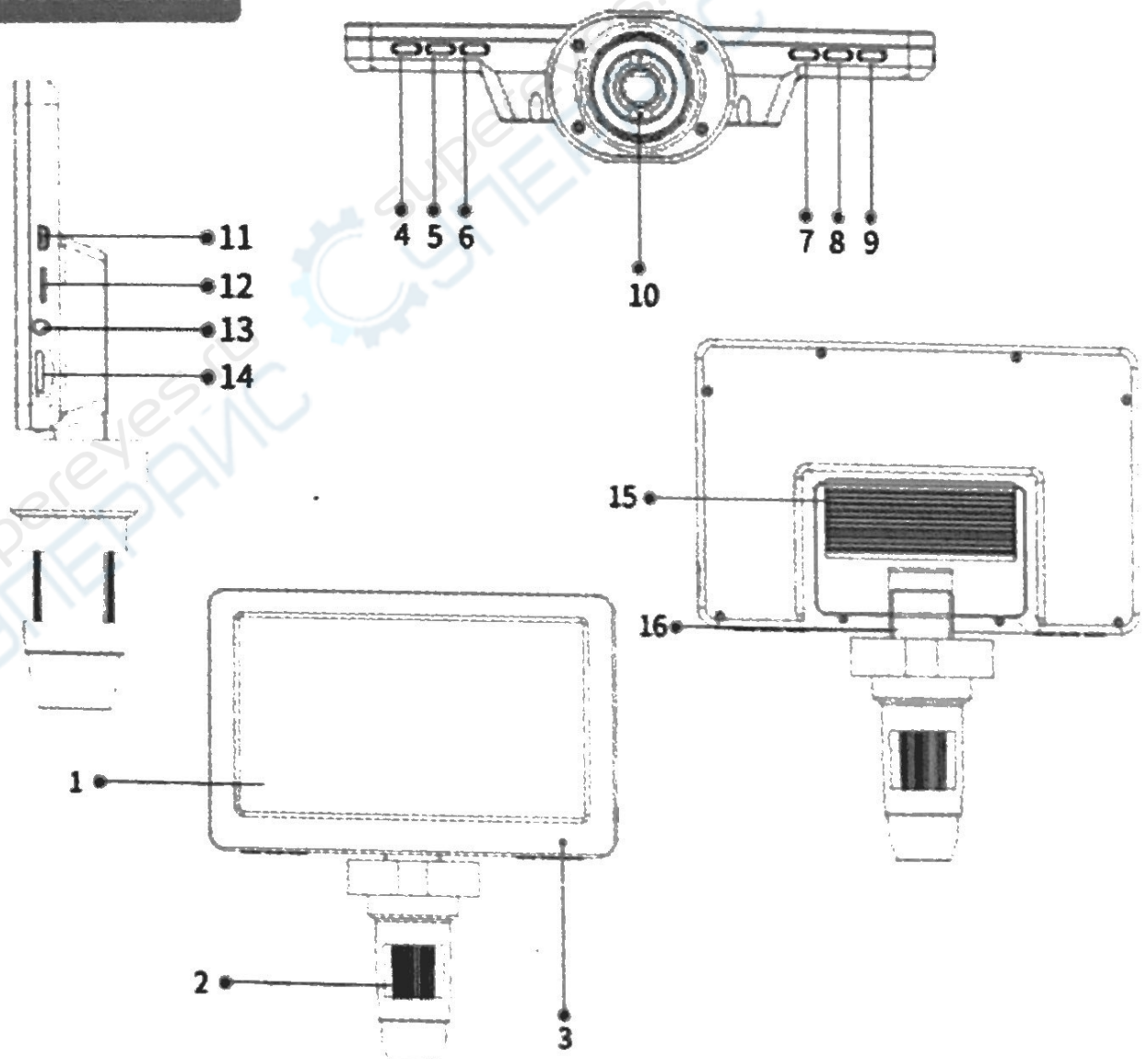
## Product Usage

Circuit board inspection and repair, textile inspection, watch and cellphone inspection, skin inspection, printing inspection, teaching and research tools, precision object magnification inspection, jewelry antique appraisal, coin appraisal reading assistance, hobbies, etc.

## Product Features

Full-featured, clear imaging, exquisite workmanship, large screen display, remote control operation, convenient operation, external LED fill light, replaceable external battery, computer connection, support for 12 languages, etc.

## Product Structure



## ● Part description

Numbering	Features
1	7 inch display
2	Focus adjustment wheel
3	Light hole
4	Up selection key
5	Confirm
6	Down selection key
7	Take a picture
8	Menu
9	Switch machine
10	LED fill light
11	MICRO USB
12	TF card socket
13	Key socket
14	Fill light brightness adjustment
15	Battery compartment back cover
16	Movable arm

## ● Function Description

Note: Use 18650 rechargeable specifications battery. Please use the charger to activate the device when the battery is first installed and replaced.

### **Micro USB charging interface:**

1. When the device's battery is low, connect the charger to charge the device. It is not recommended to use the device during charging (will reduce the battery life of the device).

2. Use a USB cable with a signal cable to connect to a computer terminal and enter the PC memory mode / camera mode / charging mode. When the USB signal cable is unplugged the device will automatically power-off within 5 seconds.



**TF card socket:** Supports minimum 8G BC10 and maximum 32G BC10 (please choose C10 specifications).

**Key socket:** The device is connected to the remote control and the external fill light through this socket.

**Camera key:** After entering the camera mode when the camera is on, press this key to take a photo.

**Ok key:** After entering different modes in the power-on state, press this key momentarily to take pictures start recording and end recording. After entering the menu, you can confirm the selection by pressing this key momentarily.

**Up selection key:** When entering the menu or storing information, this key can be used to switch between different options.

**Down selection key:** When entering the menu or storing information, this key can be used to switch between different options.

**Menu key:** In the power-on state, short press this key to bring up and exit the menu; long press this key to switch between the two modes of shooting and playback.

**Power on / off key:** In the off state, press and hold this key to start the device. In the on state, press and hold this key to turn off the device.

**Focus adjustment wheel:** In the state of taking photos or videos, rotating this wheel can adjust the focus and focus on the subject.

**LED fill light:** Turn the brightness adjustment knob (marker 14) to adjust its brightness.

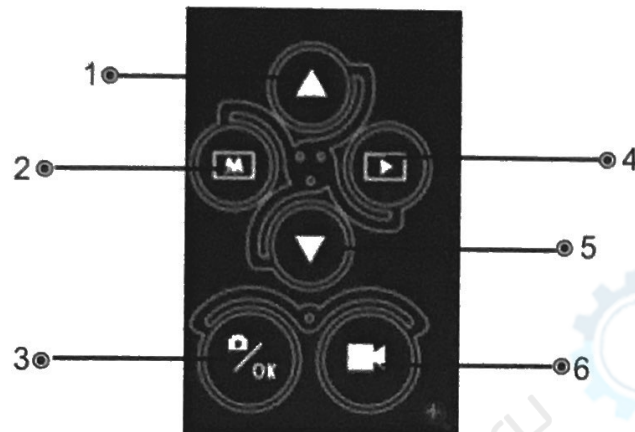
**Mobile arm:** You can adjust the angle of the display back and forth.

**Indicator description:** The indicators include the charging indicator (red), the full-charge indicator (green), and the work indicator (blue). The charge indicator and the full-charge indicator are located above the work indicator, and both pass (identification 3) Indicator hole display. After the device is connected to the USB, the charging indicator is on; after the device is fully charged, the full indicator is on. When the device is turned on, the work indicator will flash for 3 seconds after the device starts up normally, and the work indicator will blink continuously.

## ● Description of external fill light

Use a cable to connect the "Key" connector on the device and the "Micro USB" connector on the stand to power the fill light. There is a brightness adjustment knob on the stand to adjust the brightness.

## ● Plug-in remote control button description



Numbering	Features
1	Up selection key
2	Menu
3	Confirm
4	Switch
5	Down selection key
6	Video

**Up selection key:** When entering the menu or storing information, this key can be used to switch between different options.

**Down selection key:** When entering the menu or storing information, this key can be used to switch between different options.

**Menu key:** In the power-on state, short press this key to bring up and exit the menu.

**Confirmation key:** After entering different modes in the power-on state, short press this key to take a photo, start recording, end recording or play a recording and pause playback. After entering the menu, you can confirm the selection by pressing this key o.



**Switch key:** In the power-on state, short press this key to switch between the three modes of taking pictures, recording and playback.

**Recording key:** In recording mode, short press this key to start recording and end recording.

## Specifications

PROJECT	PARAMETER
Product number	DM9
Video maximum pixels	1080FHD
Lens Optical Size	1/4"
Language support	English, Portuguese, Japanese, French, German, Korean, Russian, Italian, Dutch, Arabic, Simplified Chinese, Traditional Chinese.
Photo resolution	12M, 10M, 8M, 5M, 3M
Video resolution	1080FHD, 1080P, 720P
Video format	AVI
Focus mode	Manual
Image Format	JPG
Digital zoom	Not support
Light source	8 led lights (brightness adjustable)
Focusing range	10 ~ 40mm (viewing distant view)
PC resolution and image propagation rate	1280*720/26fps
White balance	Automatic
Exposure	Automatic
PC operating system	Windows xp, win7, win8.1, win10, Mac OS x 10.5 or higher.
Lens structure	2G+IR
aperture	F4.5
Camera angle	16°
Interface and signal transmission	Micro/usb2.0
Operating temperature	-20°C ~ +60°C
Working humidity	30%~85%Rh
Working current	390mA
Power consumption	1.95W

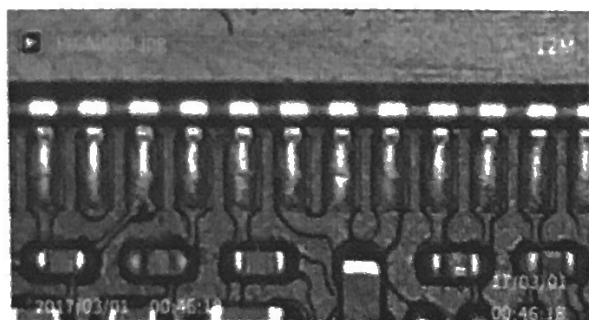
# Product Basic Information

## Interface introduction and use

Turn on the device by long pressing the power button.

### ● Mode interface

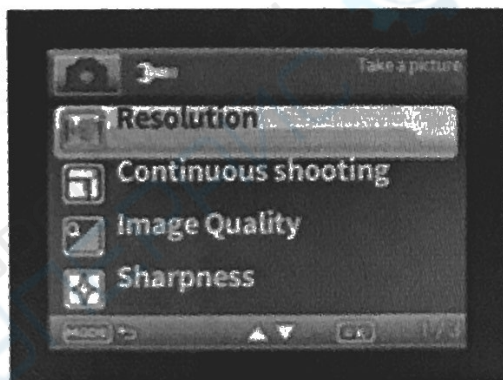
By pressing and holding the menu key on the device, you can switch between photo and playback modes.



As shown in the figure, the stored information includes photo and video information. You can use the up down key to switch between different photos and videos. Press “ok” to play and pause the video files.

### ● Menu interface

Short press the menu key to enter the menu interface, as shown in the figure.



You can exit the menu by short pressing the menu key. There are two modes for the video menu interface setting, one page for the video mode setting, and three pages for the other mode settings. There are two modes for the camera menu interface setting, and three pages for the camera mode setting. Other modes There are 3 pages in total.

### ● Function Description

**Video resolution:** There are 3 formats: 1080FHD, 1080P, 720P.

**Camera resolution:** There are 5 formats : 12M, 10M, 8M, 5M, 3M to choose from.

**Continuous shooting:** After turning on this option, you can take 5 photos continuously.

**Image quality:** There are three choices: high quality, standard, and economic.

**Sharpness:** There are 3 options: strong, standard and soft.



**ISO:** There are three types : automatic, 100s 200.

**Exposure compensation:** There are 13 kinds of exposure compensation values from +2.0 to -2.0 to choose from.

**Date label:** After selecting the date or date / time, the photos and videos are marked with the date or date and time.

**Delete / Protect:** Press the menu key in the playback mode to enter the delete / protect mode, you can choose to delete or protect the selected content. Select Delete All or Protect All to unprotect it.

**Playback mode:** The user can view the required photos or video files as needed. Long press the menu key on the device or the switch on the remote control to switch modes.

**Date / Time:** Set the date and format / time parameters.

**Format:** Format the memory.

**Automatic shutdown:** Select a suitable time to make the device automatically shut down when unattended.

**Screen saver:** Select a suitable time to make the device automatically turn off the screen when no one is operating.

**Language:** You can choose different languages for display.

**AC frequency:** Mains frequency setting, 50hz in China and 60hz in foreign countries.

**Alignment Assistance:** Show and hide the "ten" character line in the photo and video interface.

**Default setting:** Restore factory settings.

**Version:** View the version of the current software.

## ● USB function

When the device is connected to the computer via a USB cable, the device's mode has pc memory mode / camera mode / charging mode for users to choose.

## ● USB function mode

Connect the computer and the computer with a data cable and start the computer manually (or connect it in the power-on state). A pop-up window pops up on the screen. Press the up / down selection key to select one of the modes and press Ok to confirm:



- ① **Memory mode:** Enter the device memory on the PC side, you can view and process the photos and video files inside. This moment, only the power button and the fill light brightness adjustment are available.
- ② **Camera Mode:** only on / off Buttons and Fill Lamp Brightness Adjustment are available. Open the PC software HIVIEW, can display the image. If the image can not be displayed, select the device name in item 2 and select USB video device, then select item 3 Options and select Preview to display the image.
- ③ **Charging mode:** The device enters the charging state, and the device can be operated normally when needed.

## Installation Guide

1. To install the software, please go to <http://soft.hvscam.com> to download the HiView software according to your computer system
2. Open the microscope and connect the microscope to the host computer (make sure the plug is in place and not loose, USB needs to be plugged in to the back of the host computer)

## Safety Precautions

- Do not place the device in direct sunlight, such as a window sill.
- Please avoid the equipment and its accessories from rain or moisture, otherwise it may cause fire or electric shock.
- Do not place the device near heat or fire sources, such as electric stoves, microwave ovens, ovens, stoves, and other places where high heat may be generated.
- Do not allow children or pets to bite the device or its accessories, as it may cause equipment failure or a short circuit of the battery to cause danger.
- Do not modify the battery, insert foreign objects, or immerse it in water or other liquids to avoid overheating, fire, or explosion.

If you have any questions, please contact our company  
The final interpretation right belongs to the company.